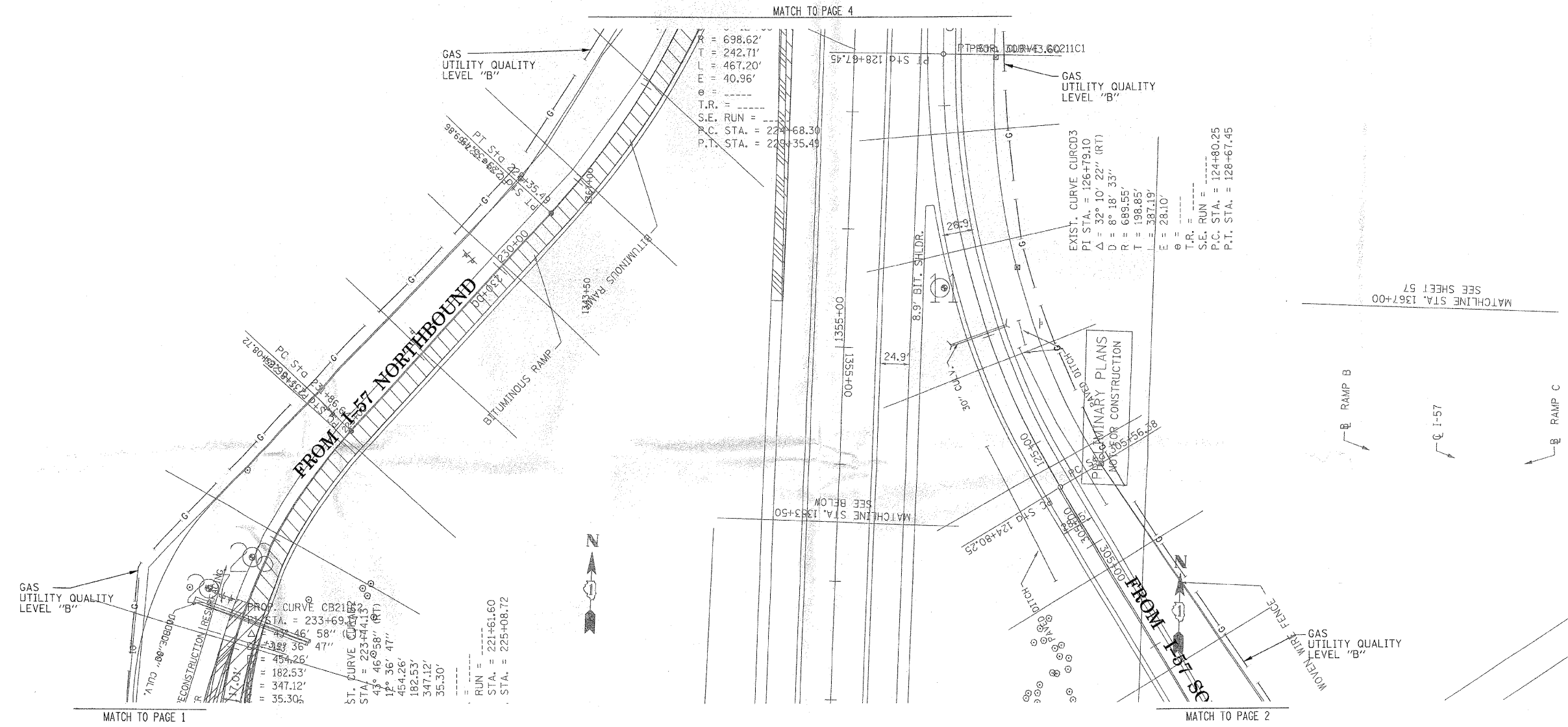
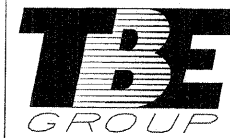


F.A. RTE.	SECTION	COUNTY	TOTAL SHEETS	SHEET NO.
	991A2 R-3&9-1B-1B-2	Will	303	79
STA.		TO STA.		
FED. ROAD DIST. NO.		ILLINOIS	FED. AID PROJECT	



The SBC locations depicted have been obtained through the application of geophysical methods to determine the existence and approximate horizontal position of these facilities. However, SBC will not provide TBE Group, Inc. with utility records nor allow access to their field closures (pedestals/manholes etc.) to help verify the locations of their existing underground facilities. Therefore, TBE is unable to verify the completeness of the SBC locations depicted in accordance with the CI/ASCE Standard 38-02.



**TBE GROUP, INC.**

CIVIL ENGINEERING \* TRANSPORTATION \* ENVIRONMENTAL  
\* PLANNING \* UTILITY ENGINEERING \* LOCATING

IL09500254, 256  
TBE SUE PAGE NO: 3 of 5  
Checked by: *[Signature]*  
Utility Quality Level "A" : Test Holes  
Utility Quality Level "B" : Designating

— T — T —	TELEPHONE
— W — W —	WATER
— G — G —	GAS
— E — E —	ELECTRIC
⊙	TBE TEST HOLE

Utilities shown in color on these plans as depicted in the legend have been investigated by TBE Group, Inc in accordance with SUE Industry Standards. All other information shown has been provided to TBE Group, Inc by others. TBE's SUE field investigation was performed during the period 4-10-06 through 11-17-06. Changes to utilities after these dates may have been made and therefore may result in variances from this plan. Consideration should be given to updating this plan if deemed advisable prior to final design and construction.

205 W. WACKER DRIVE  
SUITE 1020  
CHICAGO, IL 60606  
(312) 704-1970

REVISIONS	
NAME	DATE

ILLINOIS DEPARTMENT OF TRANSPORTATION  
SUE Investigation of Underground Utilities  
I-57 at Manhattan Monee Road  
Section No. 991A2 R-3&9-1B-1B-2  
Contract No. 62253  
Monee, IL -Will County  
DRAWN BY : KLC  
SCALE : 1" = 50'