

F.A.I. RTE.	SECTION	COUNTY	TOTAL SHEETS	SHEET NO.
57		WILL	303	86
STA.		TO STA.		
FED. ROAD DIST. NO.		ILLINOIS FED. AID PROJECT		
+991827 R-389-11B-1-BR-2		CONTRACT: 62253		

**PAVEMENT MARKING LEGEND**

MATERIAL

P POLYUREA PAVEMENT MARKING-LINE  
T THERMOPLASTIC PAVEMENT MARKING-LINE  
B PREFORMED PLASTIC PAVEMENT MARKING-LINE TYPE B

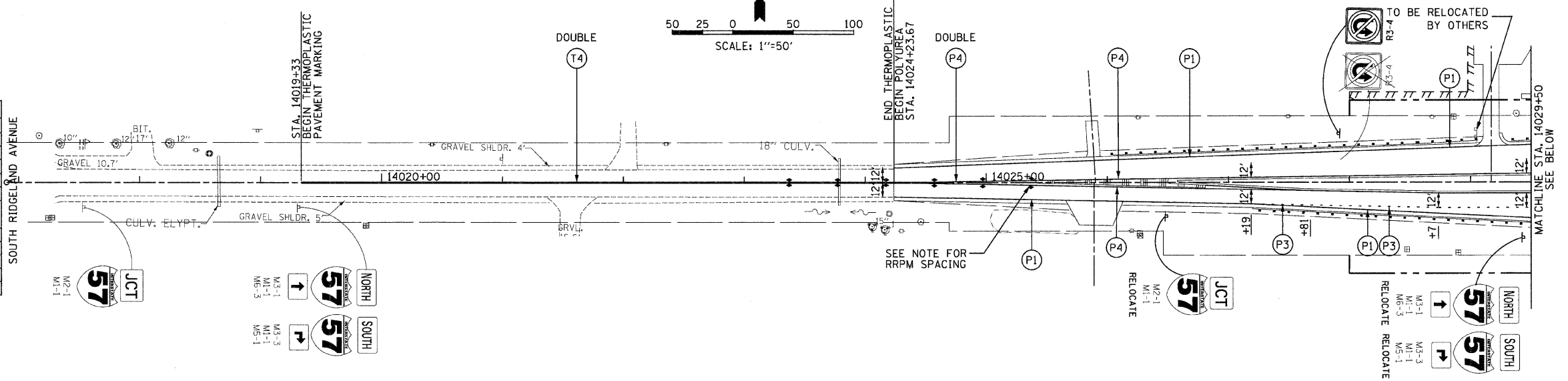
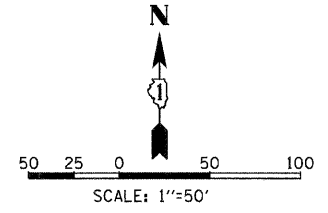
TYPE	TYPE OF MARKING	LINE WIDTH	PATTERN	COLOR
1	LANE, EDGE LINES	4"	SOLID	WHITE
2	LANE LINES	4"	SKIP-DASH (10'-30')	WHITE
3	TURN LANE MARKINGS	6"	DOTTED (2'-6')	WHITE
4	CENTERLINE, RAMP EDGE LINES	4"	SOLID	YELLOW
5	TURN LANE MARKINGS	6"	SOLID	WHITE
6	GORE EDGE LINE	8"	SOLID	WHITE
7	SHOULDER DIAGONALS, GORE DIAGONALS	12" @ 45°	SOLID	WHITE
8	MEDIAN DIAGONALS	12" @ 45°	SOLID	YELLOW
9	STOP BAR	24"	SOLID	WHITE
10	LETTERS AND SYMBOLS	8"	ARROW ONLY	WHITE
11	LANE LINES	5"	SKIP-DASH (10'-30')	WHITE
12	LANE LINES	4"	DOTTED (2'-6')	WHITE

- RAISED REFLECTIVE PAVEMENT MARKER, ONE-WAY AMBER
- RAISED REFLECTIVE PAVEMENT MARKER, ONE-WAY CRYSTAL
- RAISED REFLECTIVE PAVEMENT MARKER, TWO-WAY AMBER

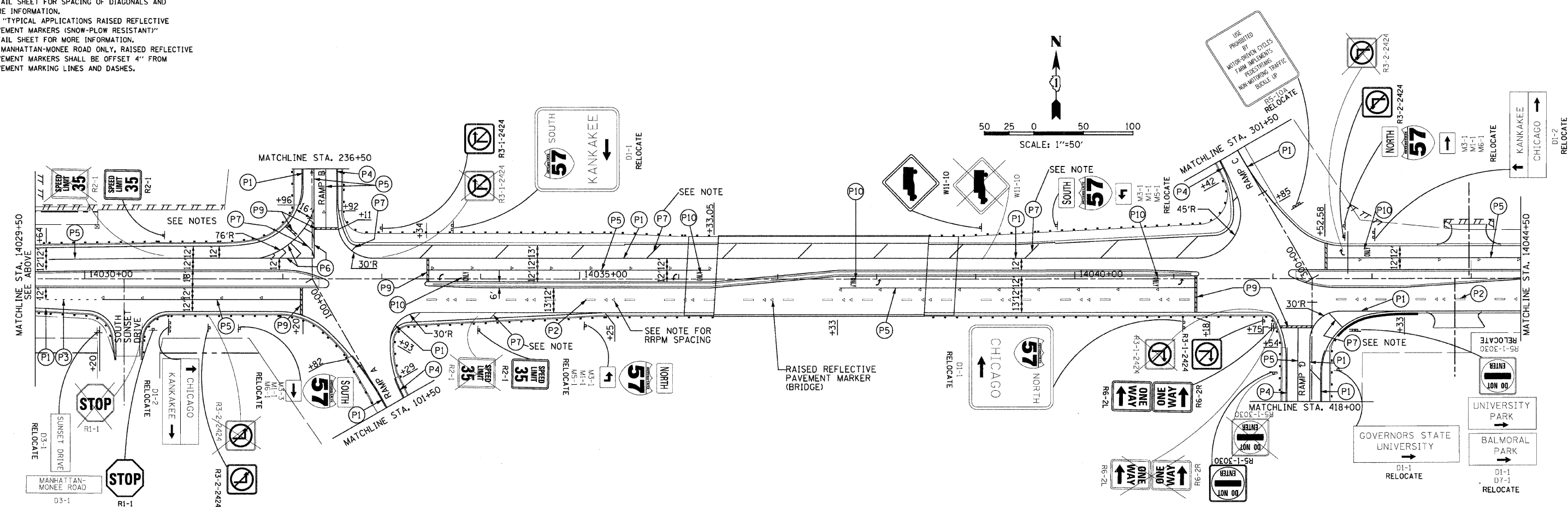
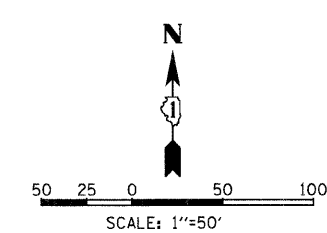
RAISED REFLECTIVE PAVEMENT MARKER, 80' C-C

**NOTES:**

- SEE "DISTRICT ONE TYPICAL PAVEMENT MARKINGS" DETAIL SHEET FOR SPACING OF DIAGONALS AND MORE INFORMATION.
- SEE "TYPICAL APPLICATIONS RAISED REFLECTIVE PAVEMENT MARKERS (SNOW-PLOW RESISTANT)" DETAIL SHEET FOR MORE INFORMATION. ON MANHATTAN-MONEE ROAD ONLY, RAISED REFLECTIVE PAVEMENT MARKERS SHALL BE OFFSET 4" FROM PAVEMENT MARKING LINES AND DASHES.



**MANHATTAN-MONEE ROAD**



**MANHATTAN-MONEE ROAD**

REVISIONS	
NAME	DATE

ILLINOIS DEPARTMENT OF TRANSPORTATION  
I-57 AT MANHATTAN - MONEE ROAD  
SIGNING AND PAVEMENT MARKING DETAILS  
MANHATTAN - MONEE ROAD  
STA. 14027+00 TO 14044+50

SCALE: VERT. NTS  
HORIZ. 1"=50'  
DATE 9/19/2008  
DRAWN BY MJK  
CHECKED BY TW

**Clark Dietz**  
ENGINEERS

DESIGN FIRM REGISTRATION  
No. 184-000450  
118 SOUTH CLINTON STREET  
SUITE 600  
CHICAGO, IL 60661  
PHONE : 312.648.9900  
FAX : 312.648.0204

P:\022231\p\lms\values\1402231SNPL\_0101.dgn  
8/17/2008