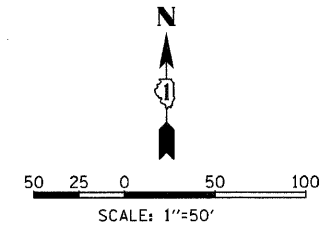
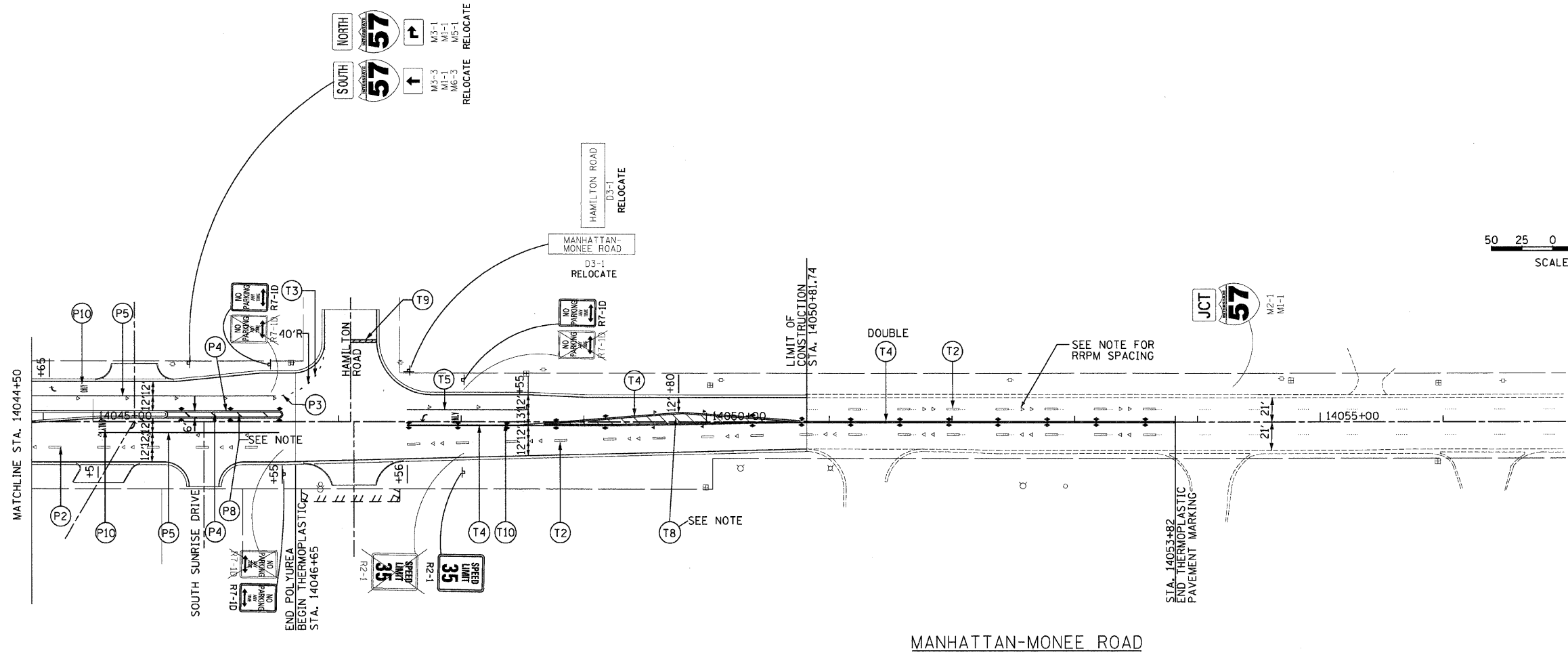


F.A.I. RTE.	SECTION	COUNTY	TOTAL SHEETS	SHEET NO.
57		WILL	303	87
STA.		TO STA.		
FED. ROAD DIST. NO.	ILLINOIS	FED. AID PROJECT		
9901&2	R-3&9-IHB-1-BR-2	CONTRACT: 62253		



PAVEMENT MARKING LEGEND

MATERIAL

P POLYUREA PAVEMENT MARKING-LINE
T THERMOPLASTIC PAVEMENT MARKING-LINE
B PREFORMED PLASTIC PAVEMENT MARKING-LINE TYPE B

TYPE	TYPE OF MARKING	LINE WIDTH	PATTERN	COLOR
1	LANE, EDGE LINES	4"	SOLID	WHITE
2	LANE LINES	4"	SKIP-DASH (10'-30')	WHITE
3	TURN LANE MARKINGS	6"	DOTTED (2'-6')	WHITE
4	CENTERLINE, RAMP EDGE LINES	4"	SOLID	YELLOW
5	TURN LANE MARKINGS	6"	SOLID	WHITE
6	GORE EDGE LINE	8"	SOLID	WHITE
7	SHOULDER DIAGONALS, GORE DIAGONALS	12" @ 45°	SOLID	WHITE
8	MEDIAN DIAGONALS	12" @ 45°	SOLID	YELLOW
9	STOP BAR	24"	SOLID	WHITE
10	LETTERS AND SYMBOLS	8"	ARROW ONLY	WHITE
11	LANE LINES	5"	SKIP-DASH (10'-30')	WHITE
12	LANE LINES	4"	DOTTED (2'-6')	WHITE

- ◀ RAISED REFLECTIVE PAVEMENT MARKER, ONE-WAY AMBER
- ◄ RAISED REFLECTIVE PAVEMENT MARKER, ONE-WAY CRYSTAL
- ◆ RAISED REFLECTIVE PAVEMENT MARKER, TWO-WAY AMBER
- ⊥ RAISED REFLECTIVE PAVEMENT MARKER, 80' C-C

- NOTES:**
- SEE "DISTRICT ONE TYPICAL PAVEMENT MARKINGS" DETAIL SHEET FOR SPACING OF DIAGONALS AND MORE INFORMATION.
 - SEE "TYPICAL APPLICATIONS RAISED REFLECTIVE PAVEMENT MARKERS (SNOW-PLOW RESISTANT)" DETAIL SHEET FOR MORE INFORMATION. ON MANHATTAN-MONEE ROAD ONLY, RAISED REFLECTIVE PAVEMENT MARKERS SHALL BE OFFSET 4" FROM PAVEMENT MARKING LINES AND DASHES.

REVISIONS	
NAME	DATE

ILLINOIS DEPARTMENT OF TRANSPORTATION
I-57 AT MANHATTAN - MONEE ROAD
SIGNING AND PAVEMENT MARKING DETAILS
MANHATTAN - MONEE ROAD
STA. 14044+50 TO 14056+00

SCALE: VERT. NTS
HORIZ. 1"=50'
DATE 9/19/2008

DRAWN BY MJK
CHECKED BY TW

Clark Dietz
ENGINEERS

DESIGN FIRM REGISTRATION
No. 184-000450
118 SOUTH CLINTON STREET
SUITE 600
CHICAGO, IL 60661
PHONE : 312.648.9900
FAX : 312.648.0204