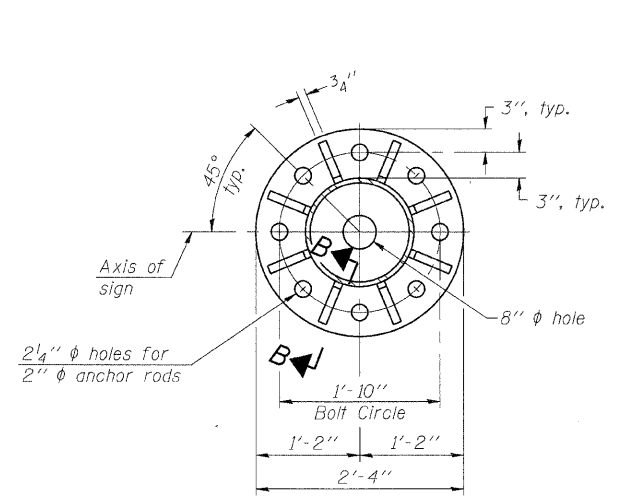
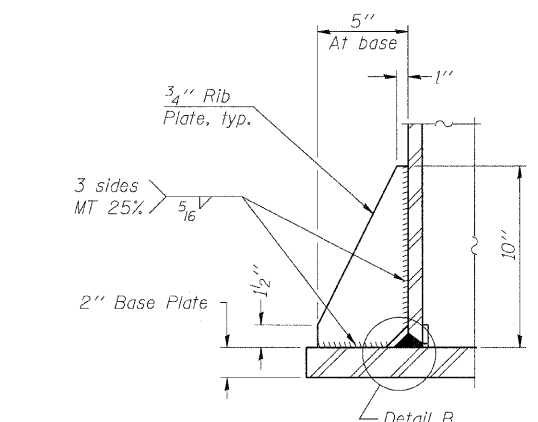


| | | | | |
|-----------------------|----------|-------------------|-----------|-----------|
| ROUTE NO. | SECTION | COUNTY | SHEET NO. | SHEET NO. |
| FAI 57 | * | WILL | 303 | 97 |
| FED. ROAD DIST. NO. 7 | ILLINOIS | FED. AID PROJECT- | | |

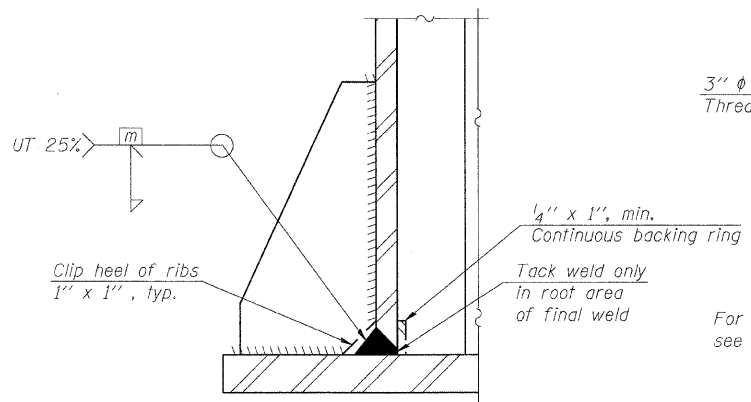
Contract #62253



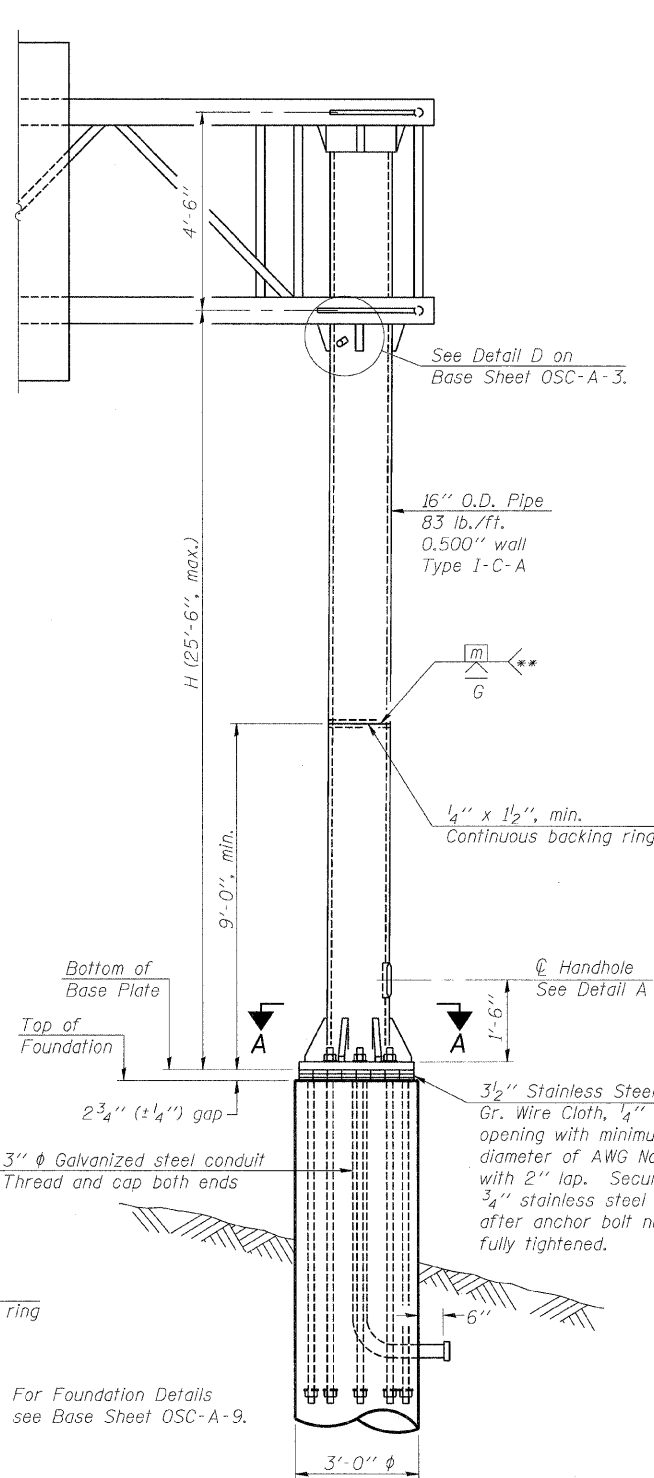
SECTION A-A



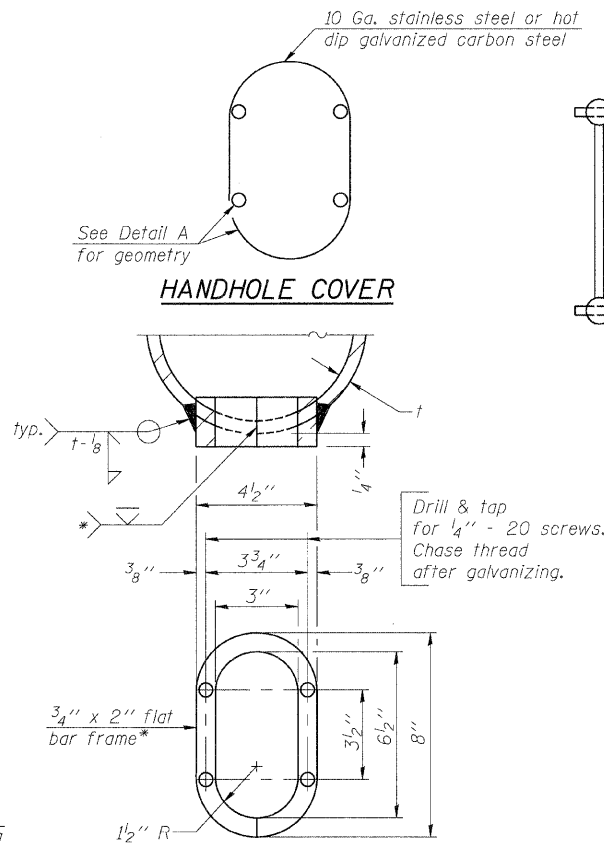
SECTION B-B



DETAIL B
(Typical rib)



FRONT ELEVATION

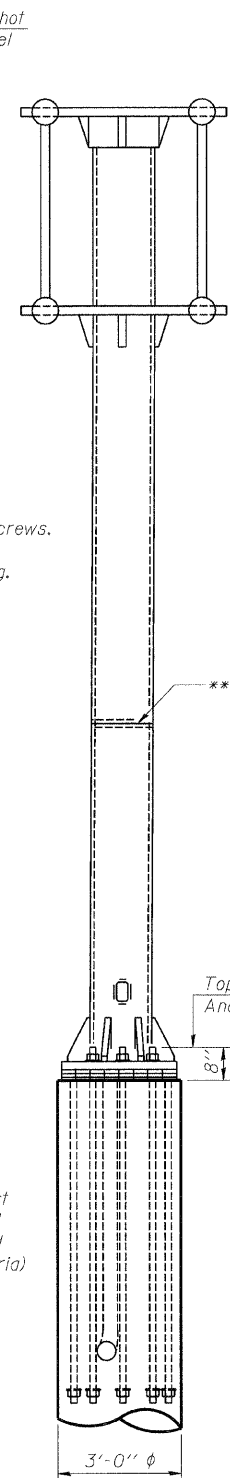


DETAIL A

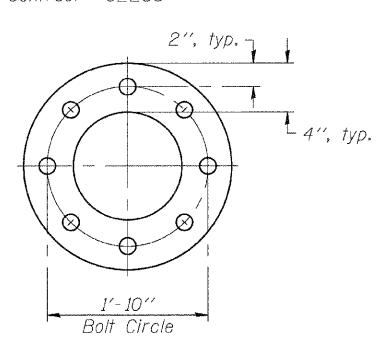
Provide 8" x 4 1/2" cover. Outside corners = 2 1/4" radius. Provide 4-5/16" holes in cover for 1/4" - 20 round head hot dip galvanized or stainless steel machine screws. (See cover details.)

* Bent bars may be butt welded top and bottom or bottom only. In lieu of fabricated handhole frame as shown, may cut from 2" plate (rolling direction vertical). All cut faces to be ground to ANSI Roughness of 500 μin or less.

** Butt welded joint in post is only allowed for post heights (H) over 20 ft. in length. If used, weld procedure must be preapproved by Engineer and joint shall receive 100% RT or UT (tension criteria) at Contractor's expense.



SIDE ELEVATION



SUGGESTED POSITIONING PLATE

For UT, grind top of rod square and smooth before galvanizing.

Utilize positioning plate and temporary nuts with leveling nuts or other Engineer approved methods to maintain anchor bolts' alignment during concrete placement. Plate, extra nuts and other positioning aids become Contractor's property. Cost included in Drilled Shaft Concrete Foundations.

Protect threads during concreting with tape, sleeves, or other means.

*** 18" is minimum to be galvanized. Entire rod may be galvanized at Contractor's option.

All Thread = NC (National Coarse)

Provide 1 uncoated nut per rod. Deform thread or use chemical thread lock to secure.

ANCHOR ROD DETAIL

Anchor rods shall conform to AASHTO M314 Grade 55 and meet Charpy V-Notch (CVN) energy of 15 lb.-ft. at 10° F. before galvanizing. Galvanize the upper 18" (minimum) and associated M291, Grade A, C or DH heavy hex nuts and hardened washers per AASHTO M232. No welding shall be permitted on rods. Provide an unfinished nut at bottom, a hexagon locknut and washer above base plate and a leveling nut and washer below base plate. Nuts shall each be tightened with 200 lb.-ft. minimum torque against base plate. Before or after threading, but before galvanizing, each anchor rod shall be ultrasonically tested (UT) by a Level II or III inspector, qualified in accord with ANSI guidelines, using a straight beam, 1/2" φ 3.5 mhz. transducer, to insure no rejectable flaws exist in the upper 18" (tension criteria). Cost of testing included in Drilled Shaft Concrete Foundations.

| NUMBER | REVISION | DATE |
|--------|----------|------|
| | | |
| | | |
| | | |
| | | |

| Structure Number | Station | H |
|------------------|---------|--------|
| IC0991057L336.5 | 1419+80 | 22'-9" |
| | | |
| | | |
| | | |
| | | |
| | | |
| | | |
| | | |
| | | |

Note: "H" based on 15'-0" or actual sign height, whichever is greater.

**CANTILEVER SIGN STRUCTURES
TYPE I-C-A TRUSS SUPPORT POST
ALUMINUM TRUSS & STEEL POST**

MANHATTAN-MONEE ROAD (CH-6)
OVER I-57
F.A. I-57 SEC. 99(1&2) R 3&9-
1HB-1-BR2
WILL COUNTY STA.14037+43.90
STRUCTURE NUMBER 099-4647

DESIGN FIRM REGISTRATION
No. 184-000450
Clark Dietz
ENGINEERS
1817 SOUTH NEIL STREET
SUITE 100
CHAMPAIGN, IL 61820
PHONE : 217.373.8900
FAX : 217.373.8923

NOTE: DIMENSIONAL DATA IS NOT TO BE OBTAINED BY SCALING ANY PORTION OF THIS DRAWING.

DESIGNED BY: SLD PROJECT NO: 102230
DRAWN BY: SLD/AJP DATE: 06/2008
CHECKED BY: SLD
APPROVED BY: TMW
ACTIVITY INITIALS

DRAWING NUMBER
OSC-5