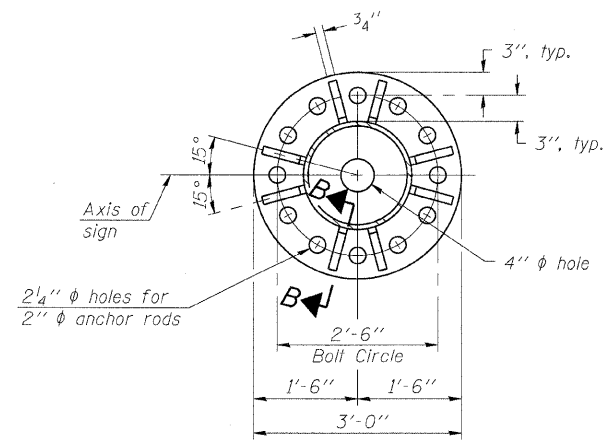
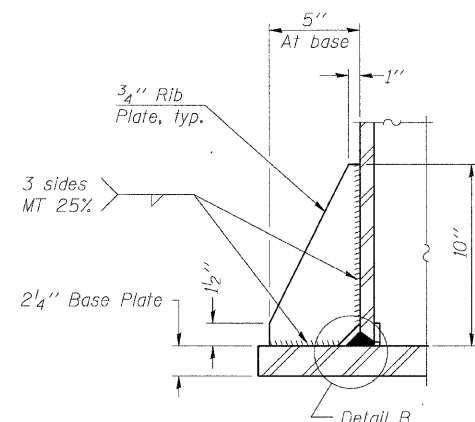


ROUTE NO.	SECTION	COUNTY	TOTAL SHEETS	SHEET NO.	SHEET NO. 6
FAI 57	*	WILL	303	97a.	11 SHEETS
FED. ROAD DIST. NO. 7	ILLINOIS	FED. AID PROJECT			

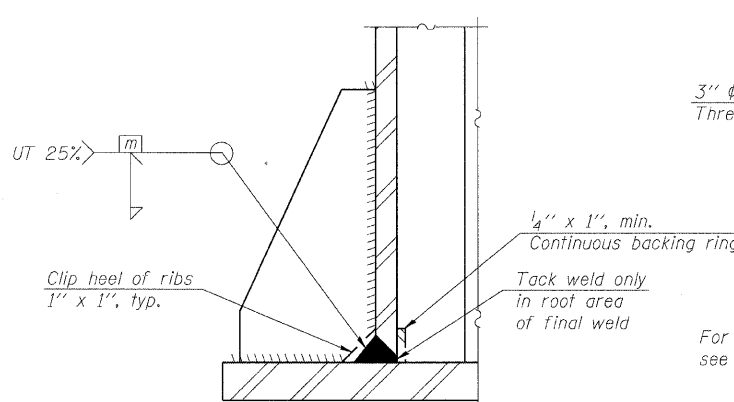
Contract #62253



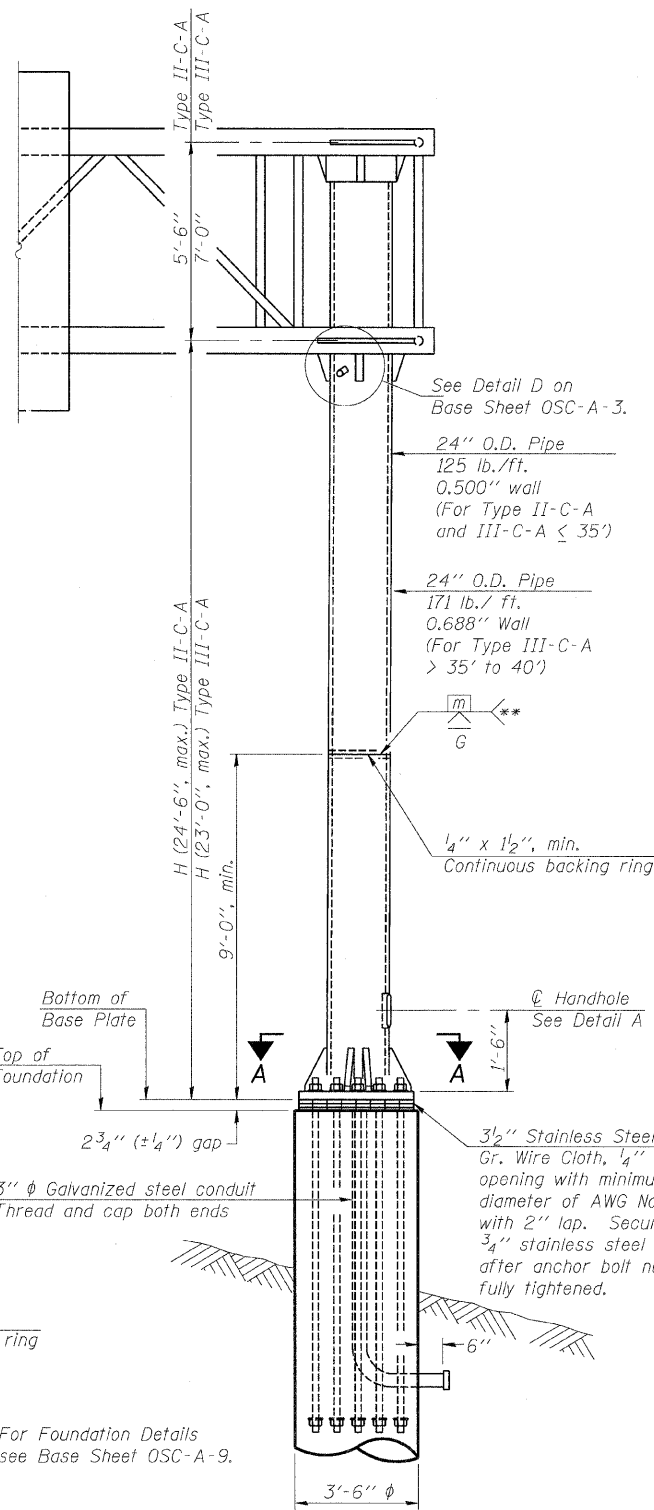
SECTION A-A



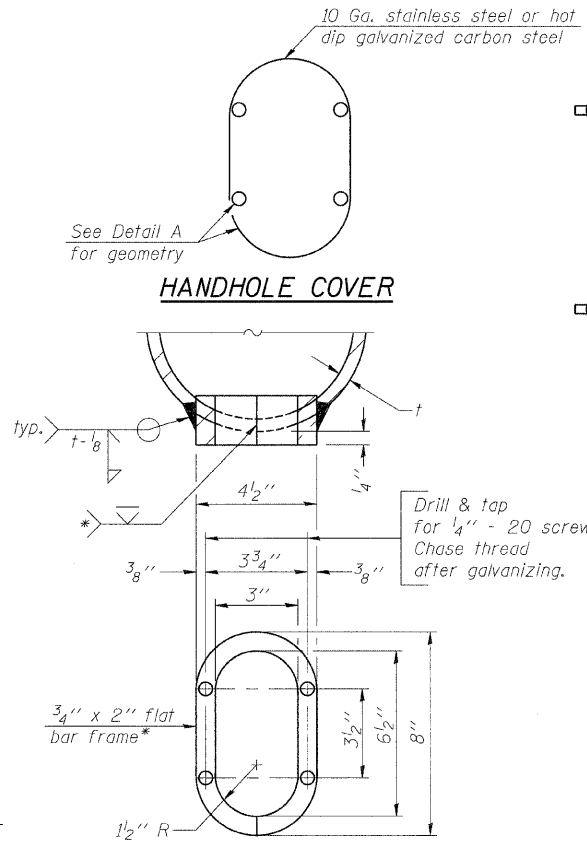
SECTION B-B



DETAIL B  
(Typical rib)



FRONT ELEVATION

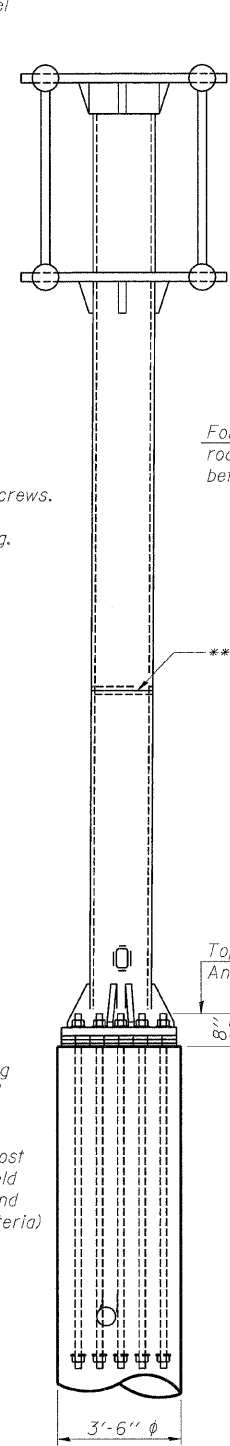


DETAIL A

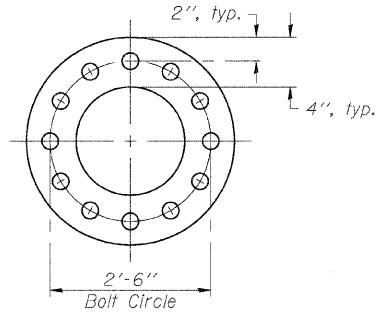
- \* Bent bars may be butt welded top and bottom or bottom only. In lieu of fabricated handhole frame as shown, may cut from 2" plate (rolling direction vertical). All cut faces to be ground to ANSI Roughness of 500  $\mu$ in or less.
- \*\* Butt welded joint in post is only allowed for post heights (H) over 20 ft. in length. If used, weld procedure must be preapproved by Engineer and joint shall receive 100% RT or UT (tension criteria) at Contractor's expense.

Structure Number	Station	H
1C0991057L335.4	1366+16.50	22'-7"
1C0991057L336.0	1393+40	22'-11"

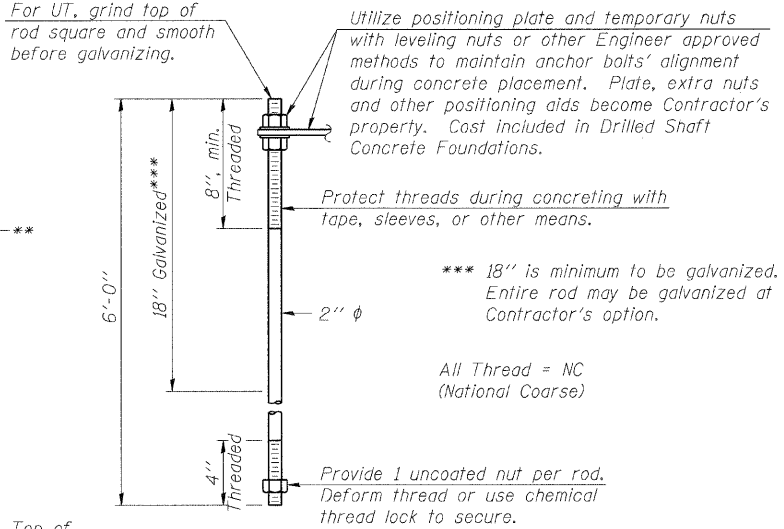
Note: "H" based on 15'-0" or actual sign height, whichever is greater.



SIDE ELEVATION



SUGGESTED POSITIONING PLATE



ANCHOR ROD DETAIL

Anchor rods shall conform to AASHTO M314 Grade 55 and meet Charpy V-Notch (CVN) energy of 15 lb.-ft. at 10° F. before galvanizing. Galvanize the upper 18" (minimum) and associated M291, Grade A, C or DH heavy hex nuts and hardened washers per AASHTO M232. No welding shall be permitted on rods. Provide an unfinished nut at bottom, a hexagon locknut and washer above base plate and a leveling nut and washer below base plate. Nuts shall each be tightened with 200 lb.-ft. minimum torque against base plate. Before or after threading, but before galvanizing, each anchor rod shall be ultrasonically tested (UT) by a Level II or III inspector, qualified in accord with ANSI guidelines, using a straight beam, 1/2"  $\phi$  3.5 mhz. transducer, to insure no rejectable flaws exist in the upper 18" (tension criteria). Cost of testing included in Drilled Shaft Concrete Foundations.

**CANTILEVER SIGN STRUCTURES  
TYPE II-C-A & III-C-A TRUSS SUPPORT  
POST. ALUMINUM TRUSS & STEEL POST**  
MANHATTAN-MONEE ROAD (CH-6)  
OVER I-57  
F.A. I-57 SEC. 99(1&2) R 3&9-1HB-1-BR2  
WILL COUNTY STA.14037+43.90  
STRUCTURE NUMBER 099-4647

DESIGN FIRM REGISTRATION  
No. 184-000450  
**Clark Dietz**  
ENGINEERS  
1817 SOUTH NEIL STREET  
SUITE 100  
CHAMPAIGN, IL 61820  
PHONE : 217.373.8900  
FAX : 217.373.8923

DESIGNED BY: SLD	PROJECT NO: 102230
DRAWN BY: SLD/AJP	DATE: 05/22/08
CHECKED BY: SLD	
APPROVED BY: TMW	
ACTIVITY INITIALS	

DRAWING NUMBER  
**OSC-5a**

NUMBER	REVISION	DATE