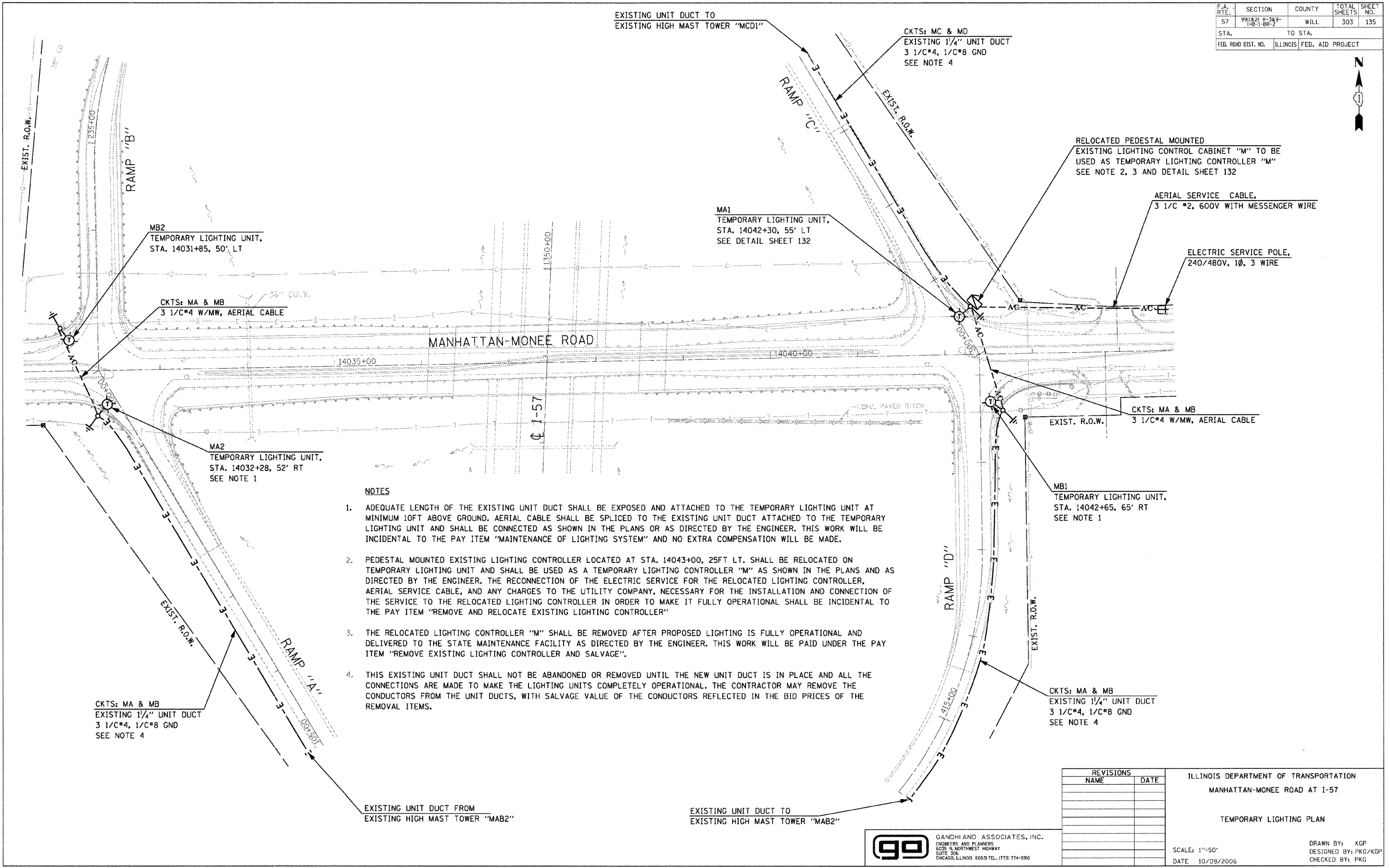
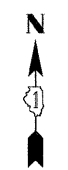


F.A. R.T.E.	SECTION	COUNTY	TOTAL SHEETS	SHEET NO.
57	991&21 R-3&9-1H&1-BR-2	WILL	303	135
STA.		TO STA.		
FED. ROAD DIST. NO.		ILLINOIS FED. AID PROJECT		



NOTES

1. ADEQUATE LENGTH OF THE EXISTING UNIT DUCT SHALL BE EXPOSED AND ATTACHED TO THE TEMPORARY LIGHTING UNIT AT MINIMUM 10FT ABOVE GROUND. AERIAL CABLE SHALL BE SPLICED TO THE EXISTING UNIT DUCT ATTACHED TO THE TEMPORARY LIGHTING UNIT AND SHALL BE CONNECTED AS SHOWN IN THE PLANS OR AS DIRECTED BY THE ENGINEER. THIS WORK WILL BE INCIDENTAL TO THE PAY ITEM "MAINTENANCE OF LIGHTING SYSTEM" AND NO EXTRA COMPENSATION WILL BE MADE.
2. PEDESTAL MOUNTED EXISTING LIGHTING CONTROLLER LOCATED AT STA. 14043+00, 25FT LT. SHALL BE RELOCATED ON TEMPORARY LIGHTING UNIT AND SHALL BE USED AS A TEMPORARY LIGHTING CONTROLLER "M" AS SHOWN IN THE PLANS AND AS DIRECTED BY THE ENGINEER. THE RECONNECTION OF THE ELECTRIC SERVICE FOR THE RELOCATED LIGHTING CONTROLLER, AERIAL SERVICE CABLE, AND ANY CHARGES TO THE UTILITY COMPANY, NECESSARY FOR THE INSTALLATION AND CONNECTION OF THE SERVICE TO THE RELOCATED LIGHTING CONTROLLER IN ORDER TO MAKE IT FULLY OPERATIONAL SHALL BE INCIDENTAL TO THE PAY ITEM "REMOVE AND RELOCATE EXISTING LIGHTING CONTROLLER"
3. THE RELOCATED LIGHTING CONTROLLER "M" SHALL BE REMOVED AFTER PROPOSED LIGHTING IS FULLY OPERATIONAL AND DELIVERED TO THE STATE MAINTENANCE FACILITY AS DIRECTED BY THE ENGINEER. THIS WORK WILL BE PAID UNDER THE PAY ITEM "REMOVE EXISTING LIGHTING CONTROLLER AND SALVAGE".
4. THIS EXISTING UNIT DUCT SHALL NOT BE ABANDONED OR REMOVED UNTIL THE NEW UNIT DUCT IS IN PLACE AND ALL THE CONNECTIONS ARE MADE TO MAKE THE LIGHTING UNITS COMPLETELY OPERATIONAL. THE CONTRACTOR MAY REMOVE THE CONDUCTORS FROM THE UNIT DUCTS, WITH SALVAGE VALUE OF THE CONDUCTORS REFLECTED IN THE BID PRICES OF THE REMOVAL ITEMS.

REVISIONS	
NAME	DATE

ILLINOIS DEPARTMENT OF TRANSPORTATION
 MANHATTAN-MONEE ROAD AT I-57
 TEMPORARY LIGHTING PLAN
 SCALE: 1"=50'
 DATE: 10/09/2006
 DRAWN BY: KGP
 DESIGNED BY: PKG/KGP
 CHECKED BY: PKG

ga GANDHI AND ASSOCIATES, INC.
 ENGINEERS AND PLANNERS
 8025 N. NORTHWEST HIGHWAY
 SUITE 306
 CHICAGO, ILLINOIS 60631 TEL: (773) 774-5390