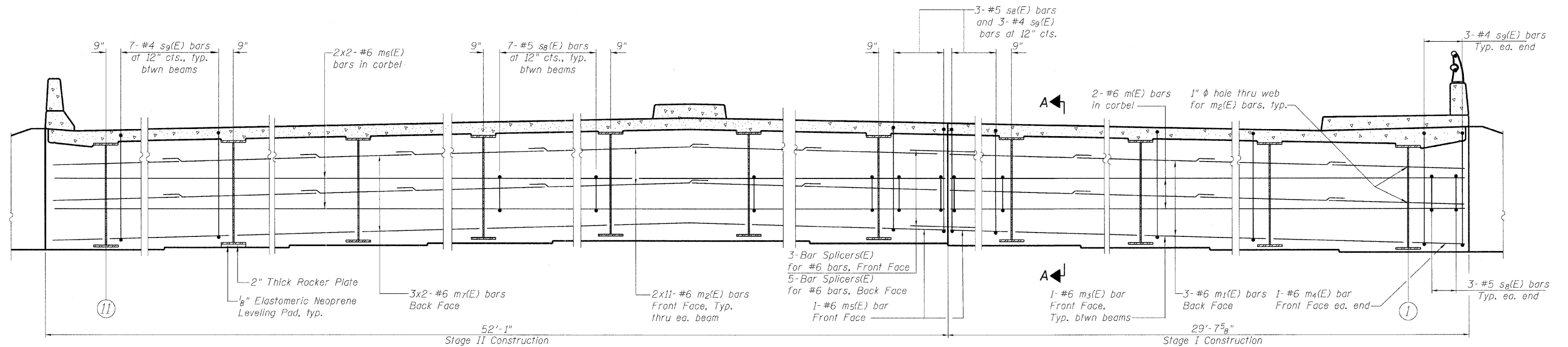


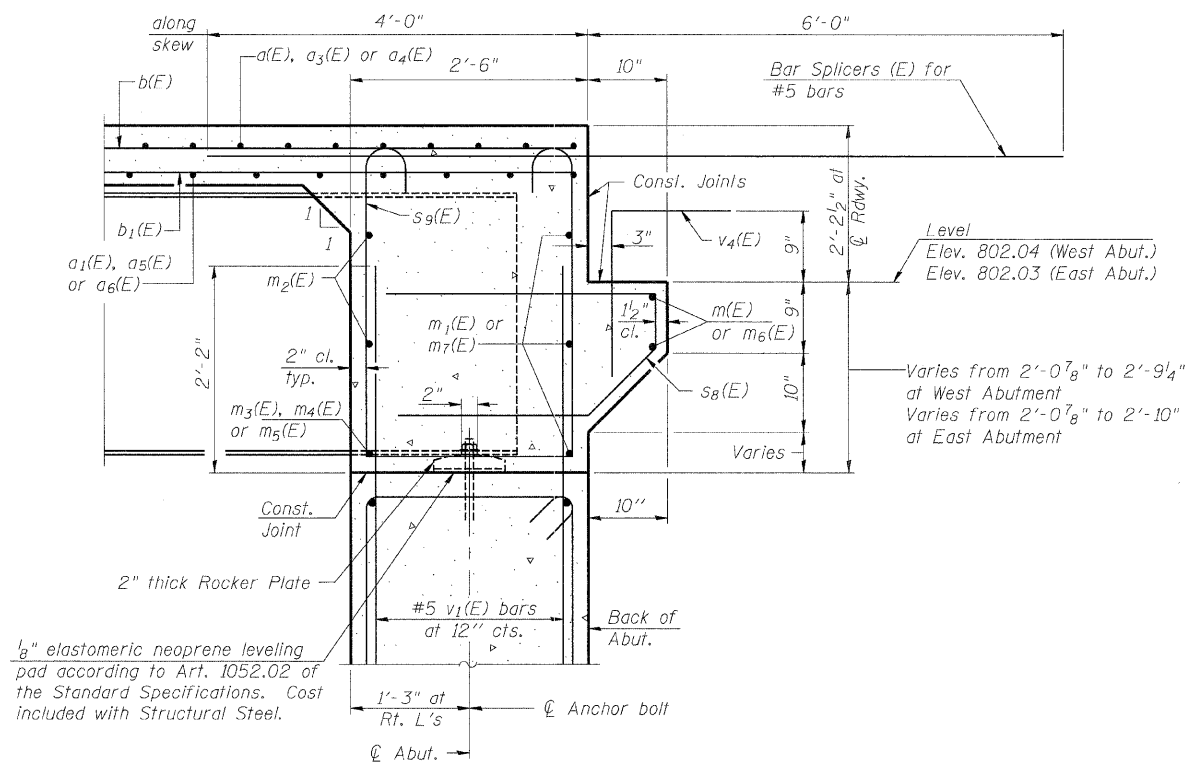
ROUTE NO.	SECTION	COUNTY	SHEETS	SHEET NO.	SHEET NO. 12
FAI 57	*	WILL	303	166	28 SHEETS
FED. ROAD DIST. NO. 7	ILLINOIS	FED. AID PROJECT			

Contract #62253



DIAPHRAGM ELEVATION AT ABUTMENT

(Looking West)
(Diaphragm similar at East Abutment, mirror image)



SECTION A-A

Dimensions at right angles to abutment, except as shown.

MIN. BAR LAP

#6	2'-9"
----	-------

NOTES:

1. Reinforcement bars in diaphragm are billed with superstructure on Dwg. S-13.
2. Concrete in diaphragm is included with Concrete Superstructure on Dwg. S-13.
3. For details of bars s8(E) & s9(E) see Dwg. S-13.
4. The s8(E) and s9(E) bars shall be placed parallel to the beams. Spacing for these bars shall be at right angles to the beams.

DIAPHRAGM ELEVATION

MANHATTAN-MONEE ROAD (CH-6)
OVER I-57
F.A. I-57 SEC. 99(1&2) R 3&9-
1HB-1-BR2
WILL COUNTY STA. 14037+43.90
STRUCTURE NUMBER 099-4647



DESIGN FIRM REGISTRATION
No. 184-000450
1817 SOUTH NEIL STREET
SUITE 100
CHAMPAIGN, IL 61820
PHONE : 217.373.8900
FAX : 217.373.8923

NOTE: DIMENSIONAL DATA IS NOT TO BE OBTAINED BY SCALING ANY PORTION OF THIS DRAWING.

DESIGNED BY: SMM	PROJECT NO: 102230
DRAWN BY: MEW/SLD	DATE: 06/20/08
CHECKED BY: SLD	
APPROVED BY: SMM	
ACTIVITY	INITIALS

DRAWING NUMBER

S-12