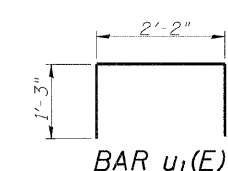
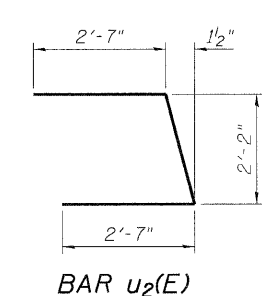
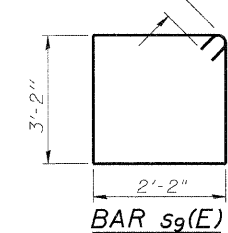
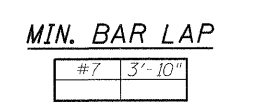
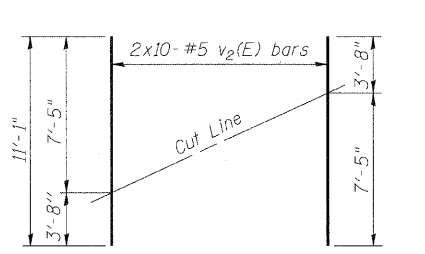
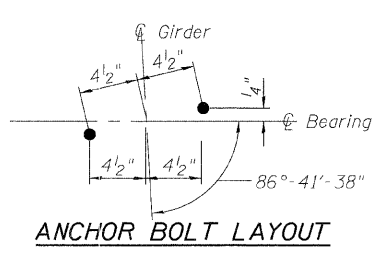


PILE DATA
 Type: HP10x42
 Nominal Req'd Bearing: 333 kips
 Allowable Resistance Available: 111 kips
 Est. Length: 66'
 No. Required: 14 + 1 Test Pile



- NOTES**
1. Pour steps monolithically with cap.
 2. Bars indicated thus 20 x 3-#5 etc. indicates 20 lines of bars with 3 lengths per line.
 3. For details of Bar Splicers, see Dwg. S-22.
 4. For details of piles and Concrete Encasement, see Dwg. S-24.

**WEST ABUTMENT
BILL OF MATERIAL**

Bar	No.	Size	Length	Shape
h4(E)	2	#5	14'-8"	
h11(E)	2	#5	7'-2"	
h9(E)	2	#5	37'-1"	
h10(E)	36	#5	12'-0"	
p7(E)	10	#7	29'-3"	
p8(E)	20	#7	27'-11"	
s9(E)	77	#4	11'-5"	
u1(E)	47	#5	4'-8"	
u2(E)	8	#6	7'-4"	
v1(E)	164	#5	4'-4"	
v2(E)	20	#5	11'-1"	
Concrete Structures				Cu. Yd. 33.5
Reinforcement Bars, Epoxy Coated				Pound 4,190
Structure Excavation				Cu. Yd. 27
Furnishing Steel Piles HP10x42				Foot 924
Driving Piles				Foot 924
Test Pile Steel HP10x42				Each 1
Bar Splicers				Each 12
Concrete Encasement				Cu. Yd. 4.0

WEST ABUTMENT
 MANHATTAN-MONEE ROAD (CH-6)
 OVER I-57
 F.A. I-57 SEC. 99(1&2) R 3&9-1HB-1-BR2
 WILL COUNTY STA. 14037+43.90
 STRUCTURE NUMBER 099-4647

DESIGN FIRM REGISTRATION
 No. 184-000450
 1817 SOUTH NEIL STREET
 SUITE 100
 CHAMPAIGN, IL 61820
 PHONE : 217.373.8900
 FAX : 217.373.8923

DESIGNED BY: SMM PROJECT NO: 102230
 DRAWN BY: MEW/SLD DATE: 06/2008
 CHECKED BY: SLD
 APPROVED BY: SMM
 ACTIVITY INITIALS