

F.A.I. RTE.	SECTION	COUNTY	TOTAL SHEETS	SHEET NO.
57		WILL	303	188
STA.		TO STA.		
FED. ROAD DIST. NO.		ILLINOIS FED. AID PROJECT		
*991&2) R-3&9-1HB-1-RR-2		CONTRACT: 62253		

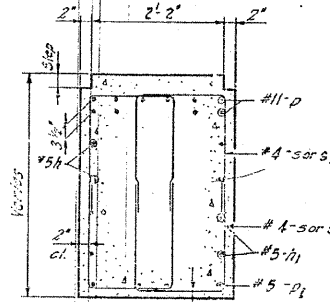
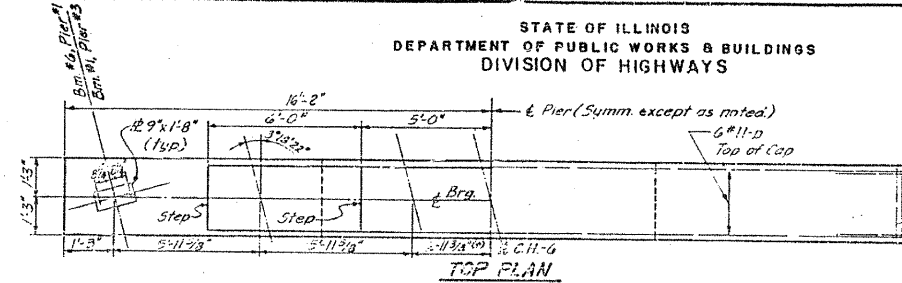
STATE OF ILLINOIS
DEPARTMENT OF PUBLIC WORKS & BUILDINGS
DIVISION OF HIGHWAYS

ROUTE NO.	SEC.	COUNTY	TOTAL SHEETS	SHEET NO.
F.A.I. RT. 57	99-1HB-1	WILL.	303	188
STA.		TO STA.		
FED. ROAD DIST. NO. 7		ILLINOIS FED. AID PROJECT		
SHEET NO. 2				
12 SHEETS				

ANCHOR BOLT LOCATIONS
(Pier 1&3)

Pier #1 Sta 14036+77.08
Pier #3 Sta 14038+11.80
C. Elev 652.01

Note: Space reinforcement steel to miss anchor bolts.



Note: All edges shall have standard 2" chamfers except footings.

SECTION A

PIER 1&3

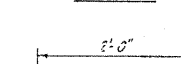
BILL OF MATERIAL

BAR	NO.	SIZE	LENGTH	SHAPE
n	3	#5	3'-0"	□
n1	3	#5	3'-9"	□
n2	6	#5	16'-0"	□
n3	16	#5	3'-0"	□
n4	20	#11	3'-0"	□
n5	3	#5	4'-1"	□
s	10	#5	6'-5"	□
s1	20	#5	3'-11"	□
s4	3	#5	3'-3"	□
s5	3	#5	6'-5"	□
u	3	#5	6'-0"	□
u	12	#6	3'-1"	□
v1	38	#5	18'-4"	□
v4	38	#5	17'-8"	□
w1	18	#6	17'-6"	□
Class X Concrete		Cu Yds.	82.9	
Reinforcement Bars		Lbs.	9,795	
Name Plate		Each	2	

1 & 3 DIMENSIONS

MARK	SIZE	SHAPE
1	1'-5"	3'-0"
2	1'-5"	3'-9"
3	3'-0"	16'-0"
4	3'-0"	3'-0"
5	3'-0"	4'-1"

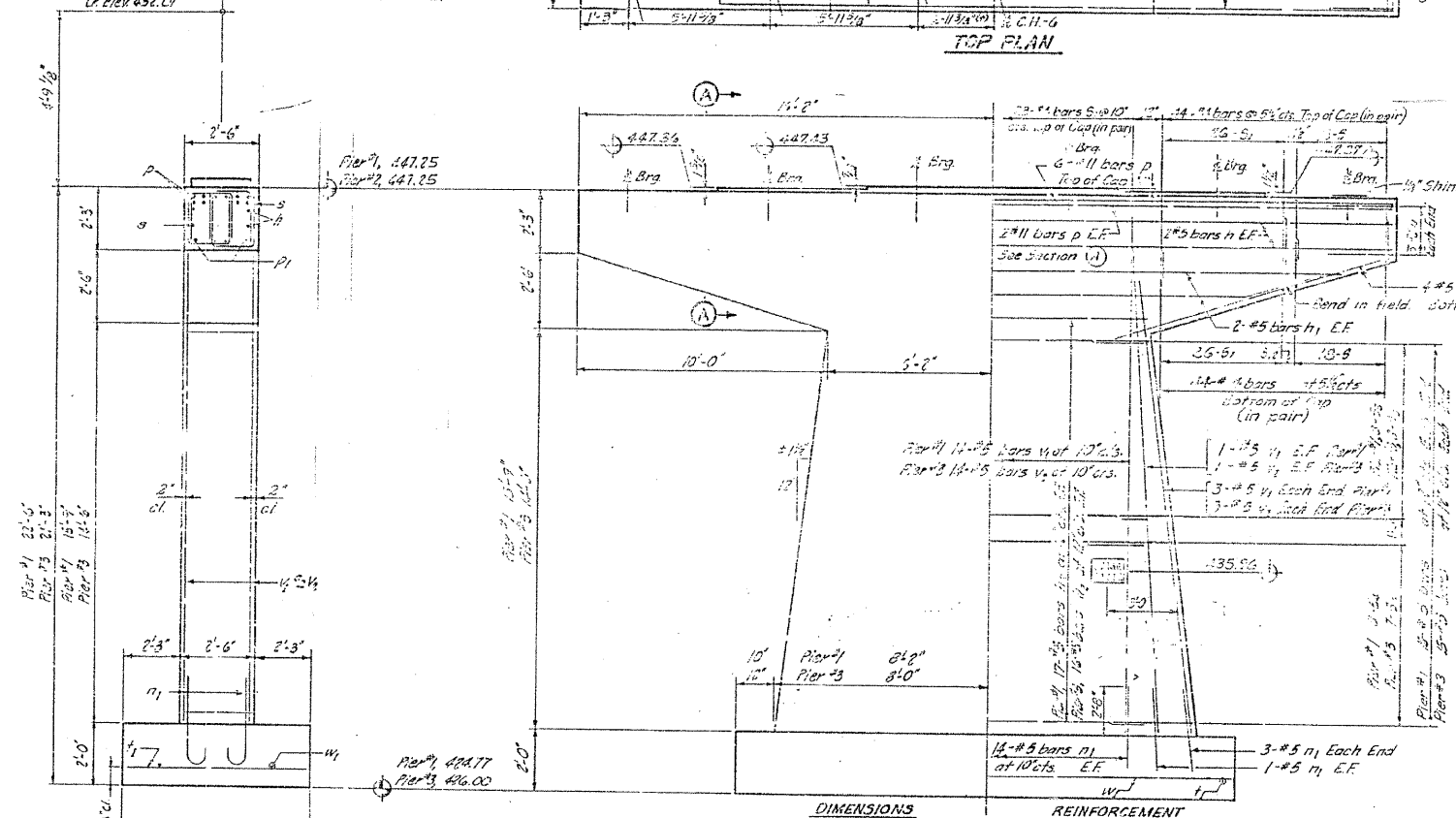
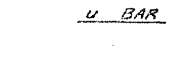
3 BARS



U BAR

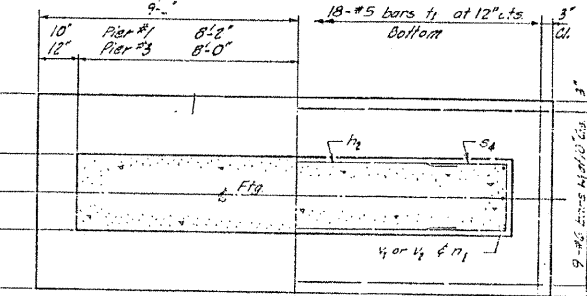


n1 BAR



DIMENSIONS REINFORCEMENT

ELEVATION*



FOOTING PLAN

DESIGNED	WLR	EXAMINED	
CHECKED	D.N.	CONCRETE ENGINEER	
DRAWN	D.N.	PASSED	
CHECKED	WRT	ENGINEER OF DESIGN	
		APPROVED	
		CHIEF HIGHWAY ENGINEER	

ILLINOIS DIVISION OF HIGHWAYS
PIERS NO. 1 & 3
F.A.I. RT. 57 SEC. 99-1HB-1
WILL COUNTY
STA. 1348+92.13

FOR INFORMATION ONLY