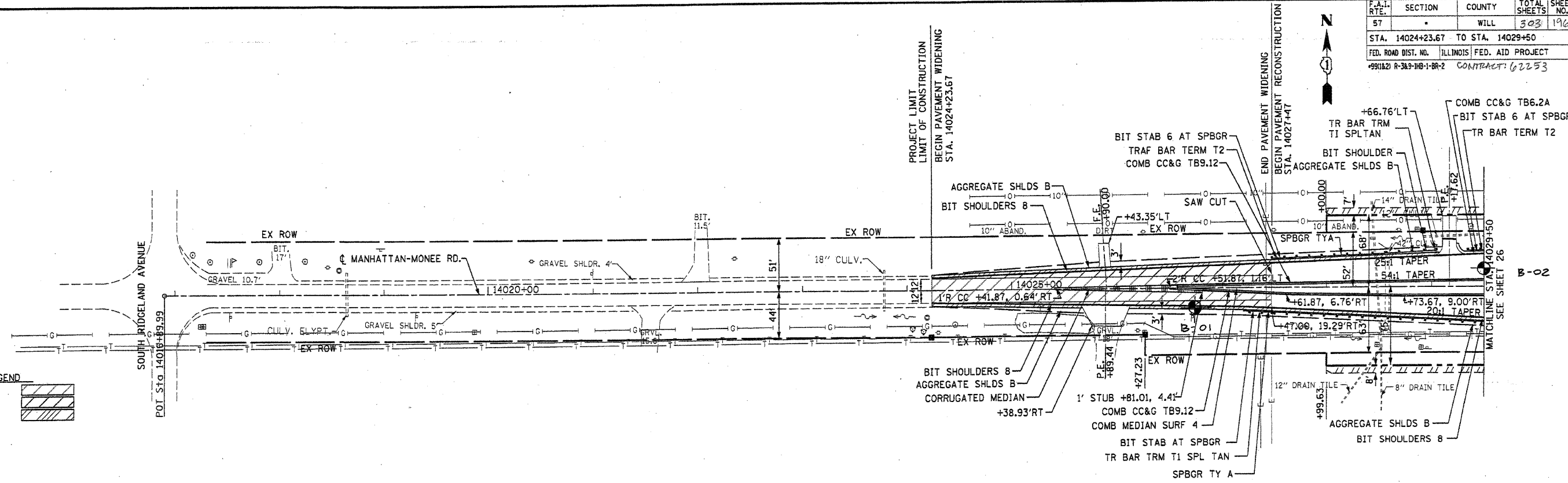


F.A.I. RTE.	SECTION	COUNTY	TOTAL SHEETS	SHEET NO.
57		WILL	303	196
STA. 14024+23.67 TO STA. 14029+50				
FED. ROAD DIST. NO.		ILLINOIS FED. AID PROJECT		
+991821 R-38.9-HB-1-BR-2		CONTRACT: 62253		

PLAN	SURVEYED	DATE
	BY	
	NO. OF SHEETS	
	NO. OF SHEETS CHECKED	
	DATE CHECKED	
	BY	
	NO. OF SHEETS	
	NO. OF SHEETS CHECKED	
	DATE CHECKED	
	BY	



PAVEMENT LEGEND

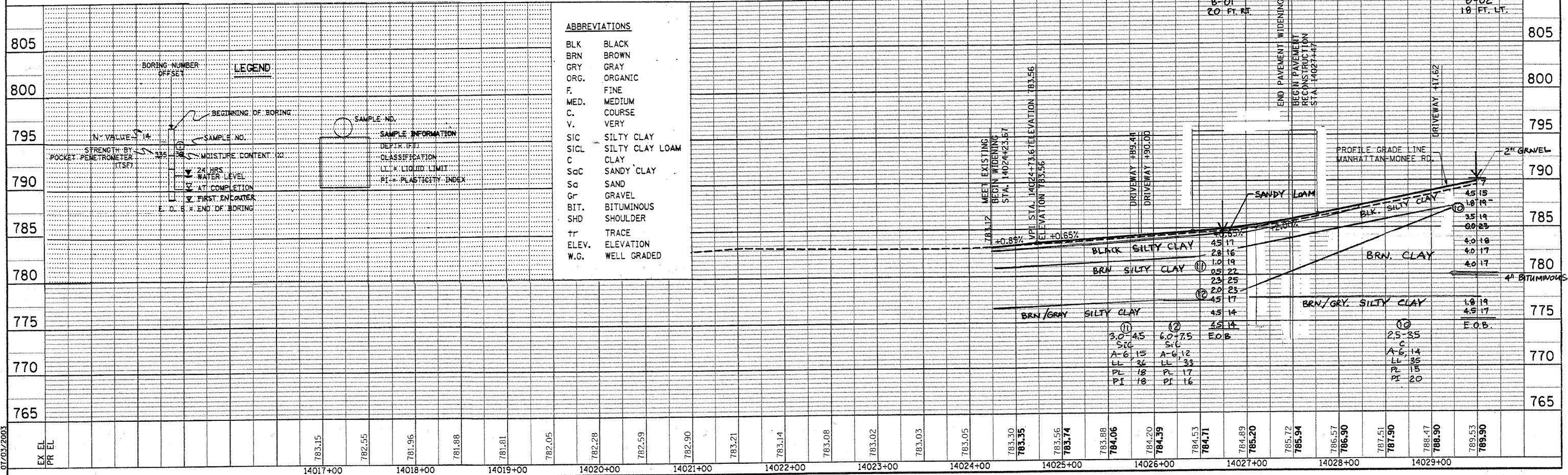
PAVEMENT RESURFACING	
PAVEMENT WIDENING	
BITUMINOUS SHOULDER	

- NOTES**
- SEE EXISTING CONDITION SHEETS FOR REMOVAL ITEMS
 - SEE DRAINAGE AND UTILITIES SHEETS FOR DRAINAGE ITEMS AND UTILITIES ITEMS

FOR SOIL PROFILE INFORMATION ONLY

MANHATTAN - MONEE ROAD

PROFILE	SURVEYED	DATE
	BY	
	NO. OF SHEETS	
	NO. OF SHEETS CHECKED	
	DATE CHECKED	
	BY	
	NO. OF SHEETS	
	NO. OF SHEETS CHECKED	
	DATE CHECKED	
	BY	



ABBREVIATIONS

BLK	BLACK
BRN	BROWN
GRY	GRAY
ORG.	ORGANIC
F.	FINE
MED.	MEDIUM
C.	COURSE
V.	VERY
SIC	SILTY CLAY
SICL	SILTY CLAY LOAM
C	CLAY
SgC	SANDY CLAY
Sg	SAND
Gr	GRAVEL
BIT.	BITUMINOUS
SHD	SHOULDER
TR	TRACE
ELEV.	ELEVATION
W.G.	WELL GRADED

LEGEND

BORING NUMBER	OFFSET
BEGINNING OF BORING	SAMPLE NO.
N. VALVE	MOISTURE CONTENT
POCKET PENETROMETER	WATER LEVEL
STRENGTH BY PENETROMETER	AT COMPLETION
24 HRS.	FIRST ENCOUNTER
END OF BORING	

07/02/2003