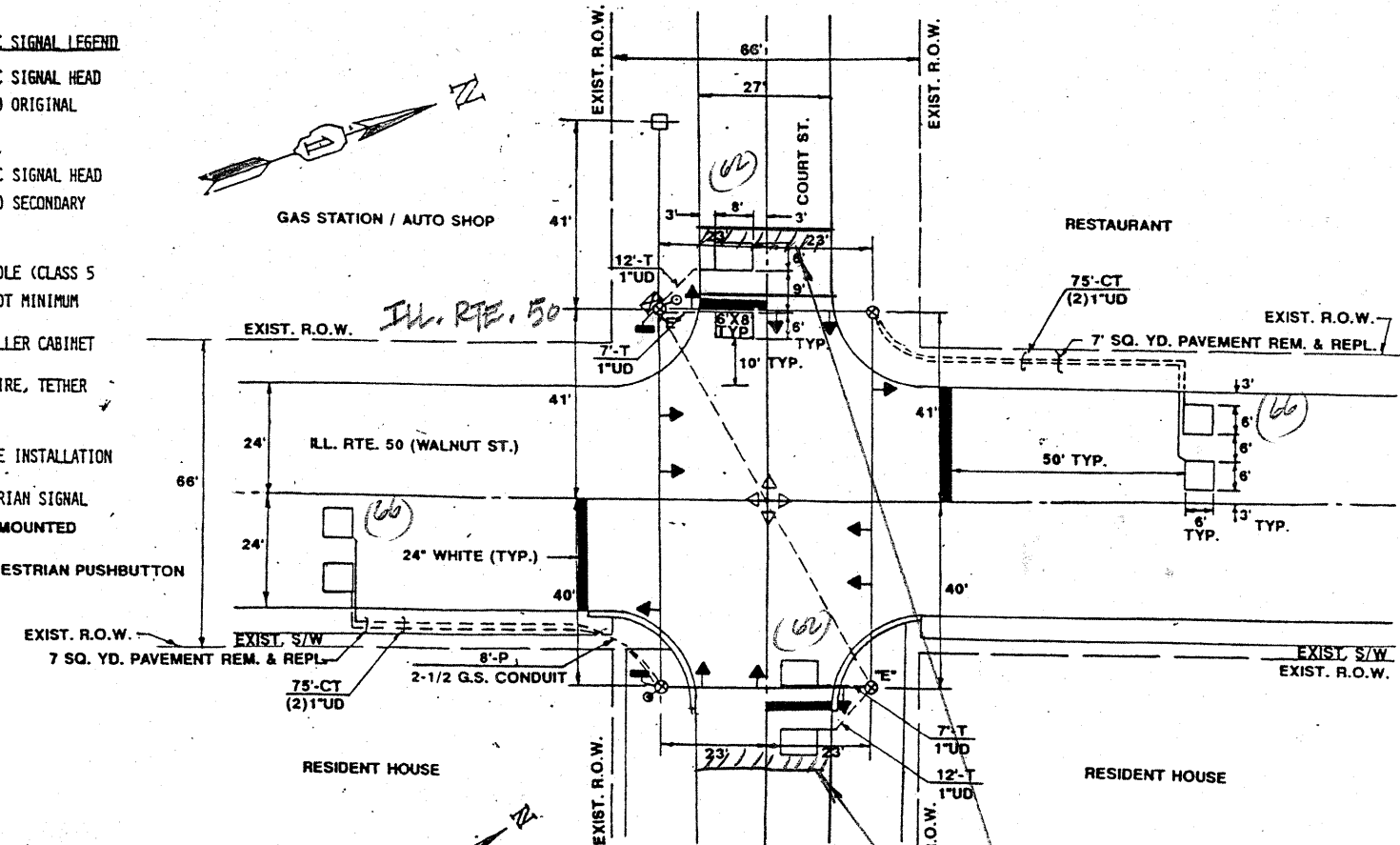
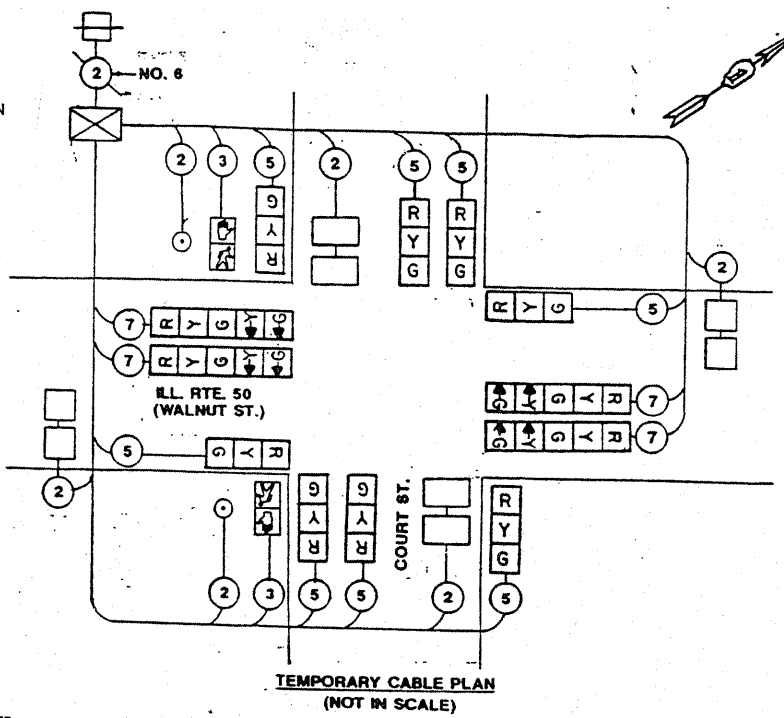
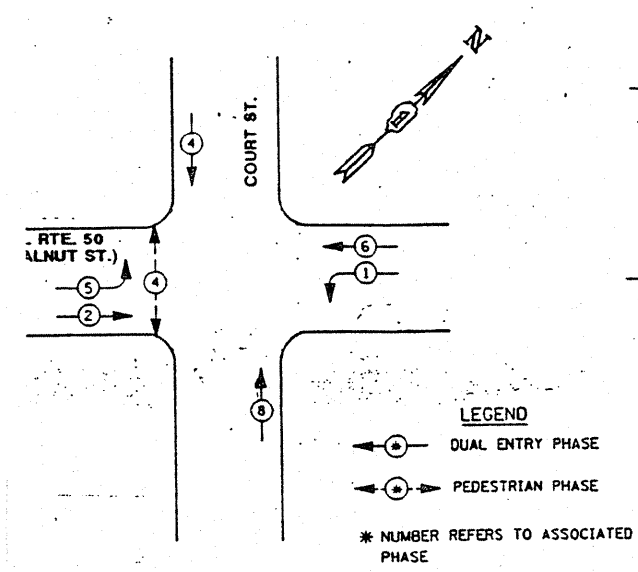


SECTION	COUNTY	TOTAL SHEETS	SHEET NO.
WILL		15	8
STA. TO STA.			
FED. ROAD DIST. NO. 7	ILLINOIS	FED. AID PROJECT	

- TEMPORARY TRAFFIC SIGNAL LEGEND**
- ← TEMPORARY TRAFFIC SIGNAL HEAD SPAN WIRE MOUNTED ORIGINAL LOCATION.
 - ← TEMPORARY TRAFFIC SIGNAL HEAD SPAN WIRE MOUNTED SECONDARY LOCATION.
 - ⊗ TEMPORARY WOOD POLE (CLASS 5 OR BETTER) 45 FOOT MINIMUM
 - ⊠ TEMPORARY CONTROLLER CABINET
 - TEMPORARY SPAN WIRE, TETHER WIRE AND CABLE
 - ⊞ TEMPORARY SERVICE INSTALLATION
 - TEMPORARY PEDESTRIAN SIGNAL HEAD, BRACKET MOUNTED
 - TEMPORARY PEDESTRIAN PUSHBUTTON



CONTROLLER SEQUENCE
 REFERRING TO STANDARD 2393, THE VEHICULAR AND PEDESTRIAN PHASES USED ARE DESIGNATED BELOW.



- TEMPORARY CABLE DIAGRAM LEGEND**
- ⊞ TEMPORARY TRAFFIC SIGNAL SECTION OR PEDESTRIAN SIGNAL SECTION 12"
 - ⊠ TEMPORARY CONTROLLER CABINET
 - ⊞ TEMPORARY SERVICE INSTALLATION
 - INDICATES NUMBER OF CONDUCTORS IN CABLE. ALL CONDUCTORS TO BE NUMBER 14 AWG WIRE UNLESS OTHERWISE NOTED.
 - PEDESTRIAN PUSHBUTTON

RESURFACING LIMITS

NOTE:
 THIS PLAN IS FOR THE PURPOSE OF REPLACING THE DETECTOR LOOPS ONLY. ALL OTHER INFORMATION SHOWN IS NOT RELATED AND WILL BE DISREGARDED.

REPLACE ALL DETECTOR LOOPS AS SHOWN (WITHIN THE RESURFACING LIMITS)

CODE NO.	QUANTITY	UNIT	ITEM
86600600	256	Foot	Detector Loop Replacement

REVISIONS	
NAME	DATE

ILLINOIS DEPARTMENT OF TRANSPORTATION
DETECTOR LOOP REPLACEMENT
 ILL. RTE. 50 @ COURT STREET
 SCALE: 1/4" = 1'-0"
 DATE: AUG. 2008
 DRAWN BY: JHE
 DESIGNED BY: JHE
 CHECKED BY: D.A.D.

TEMPORARY PHASE DESIGNATION DIAGRAM
 DUAL ENTRY - ALL LEGS
 PROTECTED/PERMITTED LEFT TURN PHASING