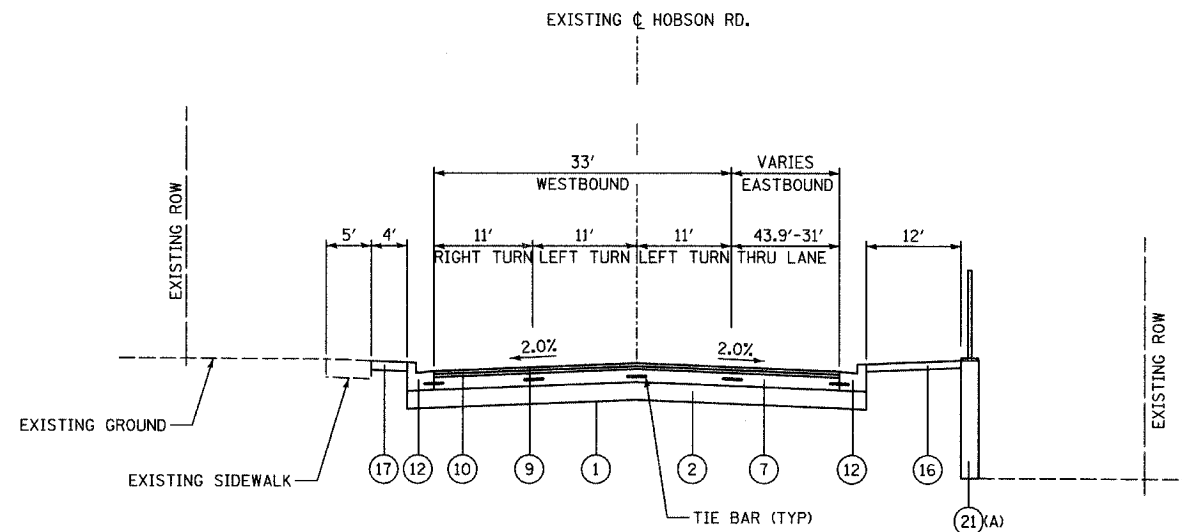
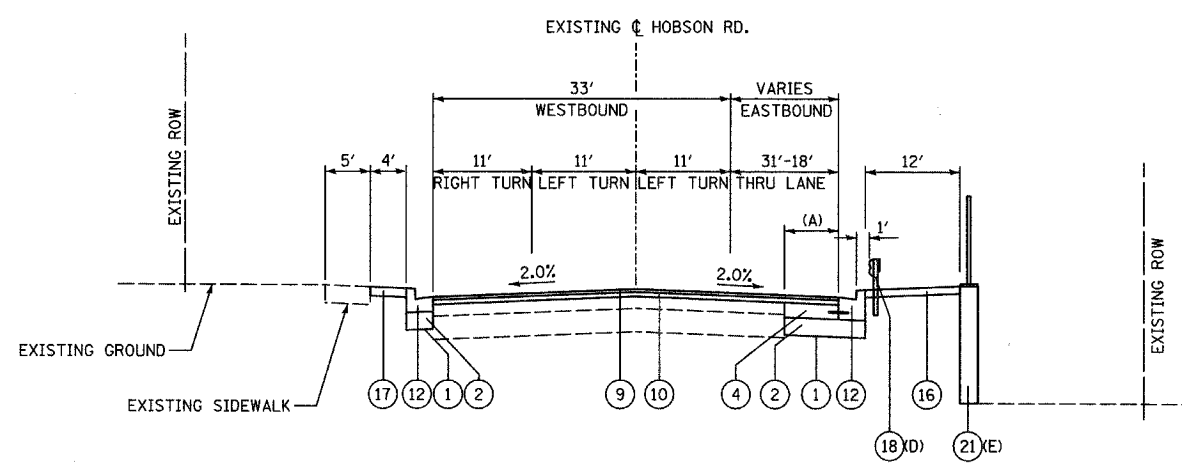


F.A.U. RTE.	SECTION	COUNTY	TOTAL SHEETS	SHEET NO.
2552	00-00114-00-PV	DuPAGE	563	30
STA.	TO STA.			
FED. ROAD DIST. NO.	ILLINOIS	FED. AID PROJECT		
CONTRACT NO. 63024				



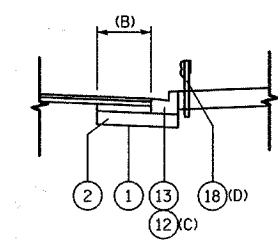
HOBSON ROAD
PROPOSED TYPICAL SECTION
STA 700+73.0 TO STA 701+00.0

(A) PROVIDE SAFETY RAILING WHERE WALL HEIGHT IS GREATER THAN 1'-0" (SEE STRUCTURAL PLANS)



HOBSON ROAD
PROPOSED TYPICAL SECTION
STA 701+00.0 TO STA 702+24.3

- (A) WIDENING VARIES 17.7'-6" FROM STA 701+00.0 TO STA 701+47.2
- (B) VARIES 6'-0" FROM STA 701+47.2 TO STA 702+10.1
- (C) FROM STA 702+10.1 TO STA 702+24.3
- (D) STEEL PLATE BEAM GUARDRAIL WITH RUB RAIL AND HMA SHOULDER STABILIZATION, 6" FROM STA. 701+12.4 TO 702+53.8
- (E) PROVIDE SAFETY RAILING WHERE WALL HEIGHT IS GREATER THAN 1'-0" (SEE STRUCTURAL PLANS)



HOBSON ROAD
SOUTH SIDE TREATMENT
STA 701+47.2 TO STA 702+24.3

LEGEND:

- ① GEOTECHNICAL FABRIC FOR GROUND STABILIZATION
- ② AGGREGATE SUBGRADE 12"
- ③ SUBBASE GRANULAR MATERIAL, TYPE B 9"
- ④ PORTLAND CEMENT CONCRETE BASE COURSE 10"
- ⑤ HOT-MIX ASPHALT SURFACE COURSE, MIX "C", NSO 1 1/2"
- ⑥ LEVELING BINDER (MACHINE METHOD), NSO 1 1/2"
- ⑦ PORTLAND CEMENT CONCRETE BASE COURSE 8 1/2"
- ⑧ AGGREGATE BICYCLE PATH
- ⑨ POLYMERIZED HOT-MIX ASPHALT SURFACE COURSE, MIX "F", NSO 1 3/4"
- ⑩ POLYMERIZED HOT-MIX ASPHALT BINDER COURSE, IL-19.0, NSO 2 1/4"
- ⑪ COMBINATION CONCRETE CURB AND GUTTER, TYPE B-6.12
- ⑫ COMBINATION CONCRETE CURB AND GUTTER, TYPE B-6.24
- ⑬ COMBINATION CONCRETE CURB AND GUTTER, TYPE B-6.24 (SPECIAL)
- ⑭ COMBINATION CONCRETE CURB AND GUTTER, TYPE M-4.24 (VARIABLE WIDTH GUTTER FLAG)
- ⑮ CONCRETE MEDIAN SURFACE, 4"
- ⑯ PORTLAND CEMENT CONCRETE SIDEWALK 5 INCH
- ⑰ HOT-MIX ASPHALT SHOULDERS, 6"
- ⑱ STEEL PLATE BEAM GUARDRAIL, TYPE A OR B (SEE PROPOSED PLANS)
- ⑲ LANDSCAPED MEDIAN (SEE LANDSCAPING PLANS)
- ⑳ LANDSCAPED AREA (SEE LANDSCAPING PLANS)
- ㉑ RETAINING WALL (SEE STRUCTURAL PLANS)
- ㉒ COMBINATION CONCRETE CURB AND GUTTER, TYPE M-2.24
- ㉓ CONCRETE MEDIAN
- ㉔ PIPE UNDERDRAINS 6"

REVISIONS	
NAME	DATE

INTERSECTION IMPROVEMENT
WASHINGTON STREET - 75th STREET
PROPOSED TYPICAL SECTIONS
HOBSON ROAD
SHEET 8 OF 11

CONSULTANT
TYLIN INTERNATIONAL

City of **Naperville**

DRAWN:	SHEET NO.
CHECKED:	
APPROVED:	
DATE: APRIL 11, 2008	
SCALE: NONE	
JOB NO: P-91-494-00	PROJECT NO: M-CMM-7003 (985)

4/11/2008 10:25:52 AM