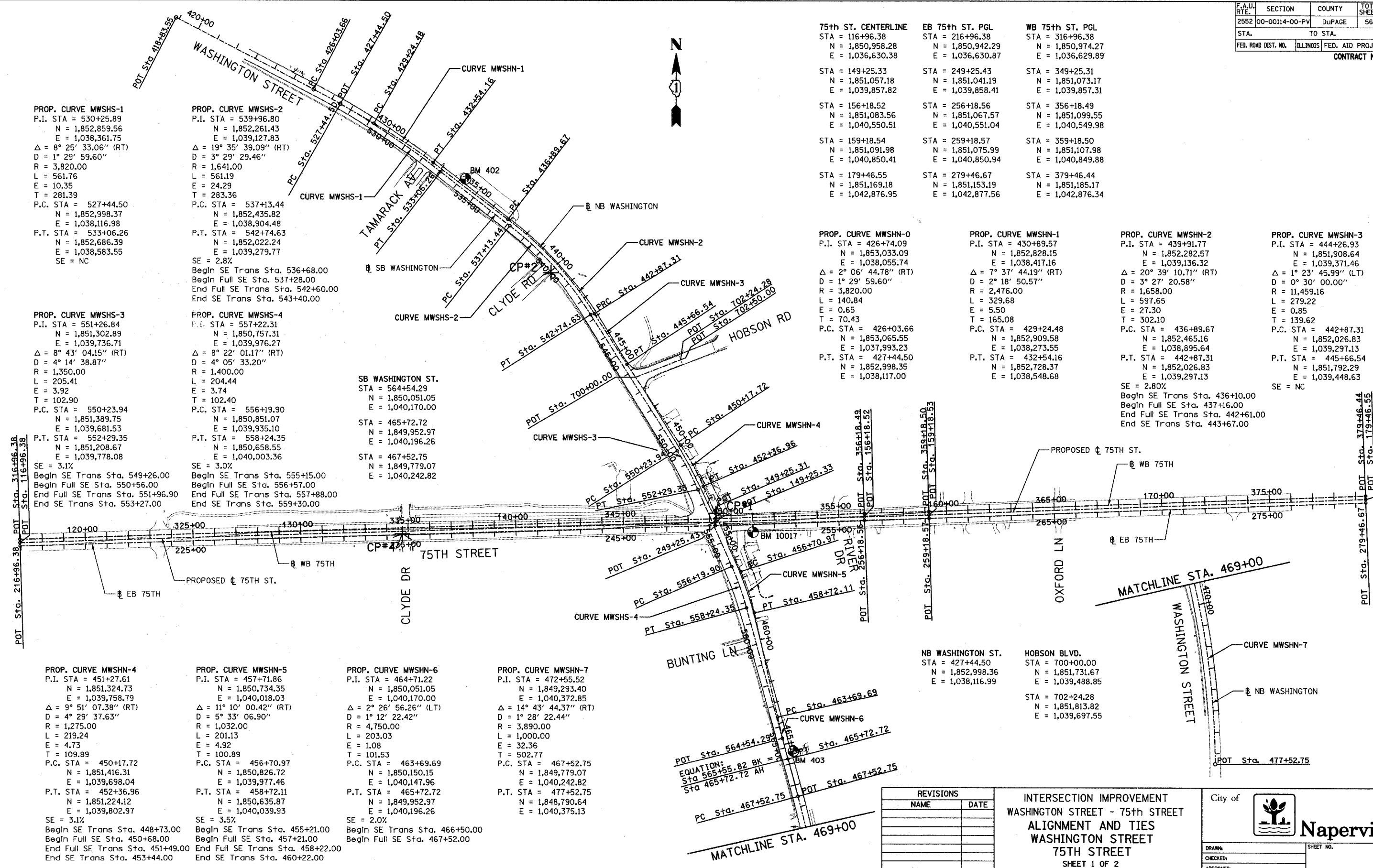


| | | | | |
|---------------------|----------------|------------------|--------------|-----------|
| F.A.U. RITE | SECTION | COUNTY | TOTAL SHEETS | SHEET NO. |
| 2552 | 00-00114-00-PV | DuPAGE | 563 | 41 |
| STA. | TO STA. | | | |
| FED. ROAD DIST. NO. | ILLINOIS | FED. AID PROJECT | | |
| CONTRACT NO. 63024 | | | | |



PROP. CURVE MWSHS-1
P.I. STA = 530+25.89
N = 1,852,859.56
E = 1,038,361.75
 $\Delta = 8^\circ 25' 33.06''$ (RT)
D = $1^\circ 29' 59.60''$
R = 3,820.00
L = 561.76
E = 10.35
T = 281.39
P.C. STA = 527+44.50
N = 1,852,998.37
E = 1,038,116.98
P.T. STA = 533+06.26
N = 1,852,686.39
E = 1,038,583.55
SE = NC

PROP. CURVE MWSHS-2
P.I. STA = 539+96.80
N = 1,852,261.43
E = 1,039,127.83
 $\Delta = 19^\circ 35' 39.09''$ (RT)
D = $3^\circ 29' 29.46''$
R = 1,641.00
L = 561.19
E = 24.29
T = 283.36
P.C. STA = 537+13.44
N = 1,852,435.82
E = 1,038,904.48
P.T. STA = 542+74.63
N = 1,852,022.24
E = 1,039,279.77
SE = 2.8%
Begin SE Trans Sta. 536+68.00
Begin Full SE Sta. 537+28.00
End Full SE Trans Sta. 542+60.00
End SE Trans Sta. 543+40.00

PROP. CURVE MWSHS-3
P.I. STA = 551+26.84
N = 1,851,302.89
E = 1,039,736.71
 $\Delta = 8^\circ 43' 04.15''$ (RT)
D = $4^\circ 14' 38.87''$
R = 1,350.00
L = 205.41
E = 3.92
T = 102.90
P.C. STA = 550+23.94
N = 1,851,389.75
E = 1,039,681.53
P.T. STA = 552+29.35
N = 1,851,208.67
E = 1,039,778.08
SE = 3.1%
Begin SE Trans Sta. 549+26.00
Begin Full SE Sta. 550+56.00
End Full SE Trans Sta. 551+96.00
End SE Trans Sta. 553+27.00

PROP. CURVE MWSHS-4
P.I. STA = 557+22.31
N = 1,850,757.31
E = 1,039,976.27
 $\Delta = 8^\circ 22' 01.17''$ (RT)
D = $4^\circ 05' 33.20''$
R = 1,400.00
L = 204.44
E = 3.74
T = 102.40
P.C. STA = 556+19.90
N = 1,850,851.07
E = 1,039,935.10
P.T. STA = 558+24.55
N = 1,850,658.55
E = 1,040,003.36
SE = 3.0%
Begin SE Trans Sta. 555+15.00
Begin Full SE Sta. 556+57.00
End Full SE Trans Sta. 557+88.00
End SE Trans Sta. 559+30.00

SB WASHINGTON ST.
STA = 564+54.29
N = 1,850,051.05
E = 1,040,170.00
STA = 465+72.72
N = 1,849,952.97
E = 1,040,196.26
STA = 467+52.75
N = 1,849,779.07
E = 1,040,242.82

PROP. CURVE MWSHN-4
P.I. STA = 451+27.61
N = 1,851,324.73
E = 1,039,758.79
 $\Delta = 9^\circ 51' 07.38''$ (RT)
D = $4^\circ 29' 37.63''$
R = 1,275.00
L = 219.24
E = 4.73
T = 109.89
P.C. STA = 450+17.72
N = 1,851,416.31
E = 1,039,698.04
P.T. STA = 452+36.96
N = 1,851,224.12
E = 1,039,802.97
SE = 3.1%
Begin SE Trans Sta. 448+73.00
Begin Full SE Sta. 450+68.00
End Full SE Trans Sta. 451+49.00
End SE Trans Sta. 453+44.00

PROP. CURVE MWSHN-5
P.I. STA = 457+17.86
N = 1,850,734.35
E = 1,040,018.03
 $\Delta = 11^\circ 10' 00.42''$ (RT)
D = $5^\circ 33' 06.90''$
R = 1,032.00
L = 201.13
E = 4.92
T = 100.89
P.C. STA = 456+70.97
N = 1,850,826.72
E = 1,039,977.46
P.T. STA = 458+72.11
N = 1,850,635.87
E = 1,040,039.93
SE = 3.5%
Begin SE Trans Sta. 455+21.00
Begin Full SE Sta. 457+21.00
End Full SE Trans Sta. 458+22.00
End SE Trans Sta. 460+22.00

PROP. CURVE MWSHN-6
P.I. STA = 464+71.22
N = 1,850,051.05
E = 1,040,170.00
 $\Delta = 2^\circ 26' 56.26''$ (LT)
D = $1^\circ 12' 22.42''$
R = 4,750.00
L = 203.03
E = 1.08
T = 101.53
P.C. STA = 463+69.69
N = 1,850,150.15
E = 1,040,147.96
P.T. STA = 465+72.72
N = 1,849,952.97
E = 1,040,196.26
SE = 2.0%
Begin SE Trans Sta. 466+50.00
Begin Full SE Sta. 467+52.00

PROP. CURVE MWSHN-7
P.I. STA = 472+55.52
N = 1,849,293.40
E = 1,040,372.85
 $\Delta = 14^\circ 43' 44.37''$ (RT)
D = $1^\circ 28' 22.44''$
R = 3,890.00
L = 1,000.00
E = 32.36
T = 502.77
P.C. STA = 467+52.75
N = 1,849,779.07
E = 1,040,242.82
P.T. STA = 477+52.75
N = 1,848,790.64
E = 1,040,375.13

75th ST. CENTERLINE
STA = 116+96.38
N = 1,850,958.28
E = 1,036,630.38
STA = 149+25.33
N = 1,851,057.18
E = 1,039,857.82
STA = 156+18.52
N = 1,851,083.56
E = 1,040,550.51
STA = 159+18.54
N = 1,851,091.98
E = 1,040,850.41
STA = 179+46.55
N = 1,851,169.18
E = 1,042,876.95

EB 75th ST. PGL
STA = 216+96.38
N = 1,850,942.29
E = 1,036,630.87
STA = 249+25.43
N = 1,851,041.19
E = 1,039,858.41
STA = 256+18.56
N = 1,851,067.57
E = 1,040,551.04
STA = 259+18.57
N = 1,851,075.99
E = 1,040,850.94
STA = 279+46.67
N = 1,851,153.19
E = 1,042,877.56

WB 75th ST. PGL
STA = 316+96.38
N = 1,850,974.27
E = 1,036,629.89
STA = 349+25.31
N = 1,851,073.17
E = 1,039,857.31
STA = 356+18.49
N = 1,851,099.55
E = 1,040,549.98
STA = 359+18.50
N = 1,851,107.98
E = 1,040,849.88
STA = 379+46.44
N = 1,851,185.17
E = 1,042,876.34

PROP. CURVE MWSHN-0
P.I. STA = 426+74.09
N = 1,853,033.09
E = 1,038,055.74
 $\Delta = 2^\circ 06' 44.78''$ (RT)
D = $1^\circ 29' 59.60''$
R = 3,820.00
L = 140.84
E = 0.65
T = 70.43
P.C. STA = 426+03.66
N = 1,853,065.55
E = 1,037,993.23
P.T. STA = 427+44.50
N = 1,852,998.35
E = 1,038,117.00

PROP. CURVE MWSHN-1
P.I. STA = 430+89.57
N = 1,852,828.15
E = 1,038,417.16
 $\Delta = 7^\circ 37' 44.19''$ (RT)
D = $2^\circ 18' 50.57''$
R = 2,476.00
L = 329.68
E = 5.50
T = 165.08
P.C. STA = 429+24.48
N = 1,852,909.58
E = 1,038,273.55
P.T. STA = 432+54.16
N = 1,852,728.37
E = 1,038,548.68


PROP. CURVE MWSHN-2
P.I. STA = 439+91.77
N = 1,852,282.57
E = 1,039,136.32
 $\Delta = 20^\circ 39' 10.71''$ (RT)
D = $3^\circ 27' 20.58''$
R = 1,658.00
L = 597.65
E = 27.30
T = 302.10
P.C. STA = 436+89.67
N = 1,852,465.16
E = 1,038,895.64
P.T. STA = 442+87.31
N = 1,852,026.83
E = 1,039,297.13
SE = 2.80%
Begin SE Trans Sta. 436+10.00
Begin Full SE Sta. 437+16.00
End Full SE Trans Sta. 442+61.00
End SE Trans Sta. 443+67.00

PROP. CURVE MWSHN-3
P.I. STA = 444+26.93
N = 1,851,908.64
E = 1,039,371.46
 $\Delta = 1^\circ 23' 45.99''$ (LT)
D = $0^\circ 30' 00.00''$
R = 11,459.16
L = 279.22
E = 0.85
T = 139.62
P.C. STA = 442+87.31
N = 1,852,026.83
E = 1,039,297.13
P.T. STA = 445+66.54
N = 1,851,792.29
E = 1,039,448.63
SE = NC

| REVISIONS | |
|-----------|------|
| NAME | DATE |
| | |
| | |
| | |
| | |
| | |
| | |
| | |
| | |
| | |

INTERSECTION IMPROVEMENT
WASHINGTON STREET - 75th STREET
ALIGNMENT AND TIES
WASHINGTON STREET
75TH STREET
SHEET 1 OF 2

CONSULTANT
TYLIN INTERNATIONAL

City of  **Naperville**

DRAWN: _____ SHEET NO. _____
CHECKED: _____
APPROVED: _____
DATE: APRIL 11, 2008
SCALE: 1"=200'-0"
JOB NO: P-91-494-00 PROJECT NO: M-CMN-7003 (985)

P:\602417\road\5\align01.dwg 4/11/2008 10:12:56 AM