

F.A.I. RTE.	SECTION	COUNTY	TOTAL SHEETS	SHEET NO.
2552	00-00114-00-PV	DUPAGE	563	43
STA.		TO STA.		
FED. ROAD DIST. NO.		ILLINOIS FED. AID PROJECT		
CONTRACT NO. 63024				



CP#1
CONTROL POINT

EL= 665.435
N = 1851098.357
E = 1039861.843

CP#3
CONTROL POINT

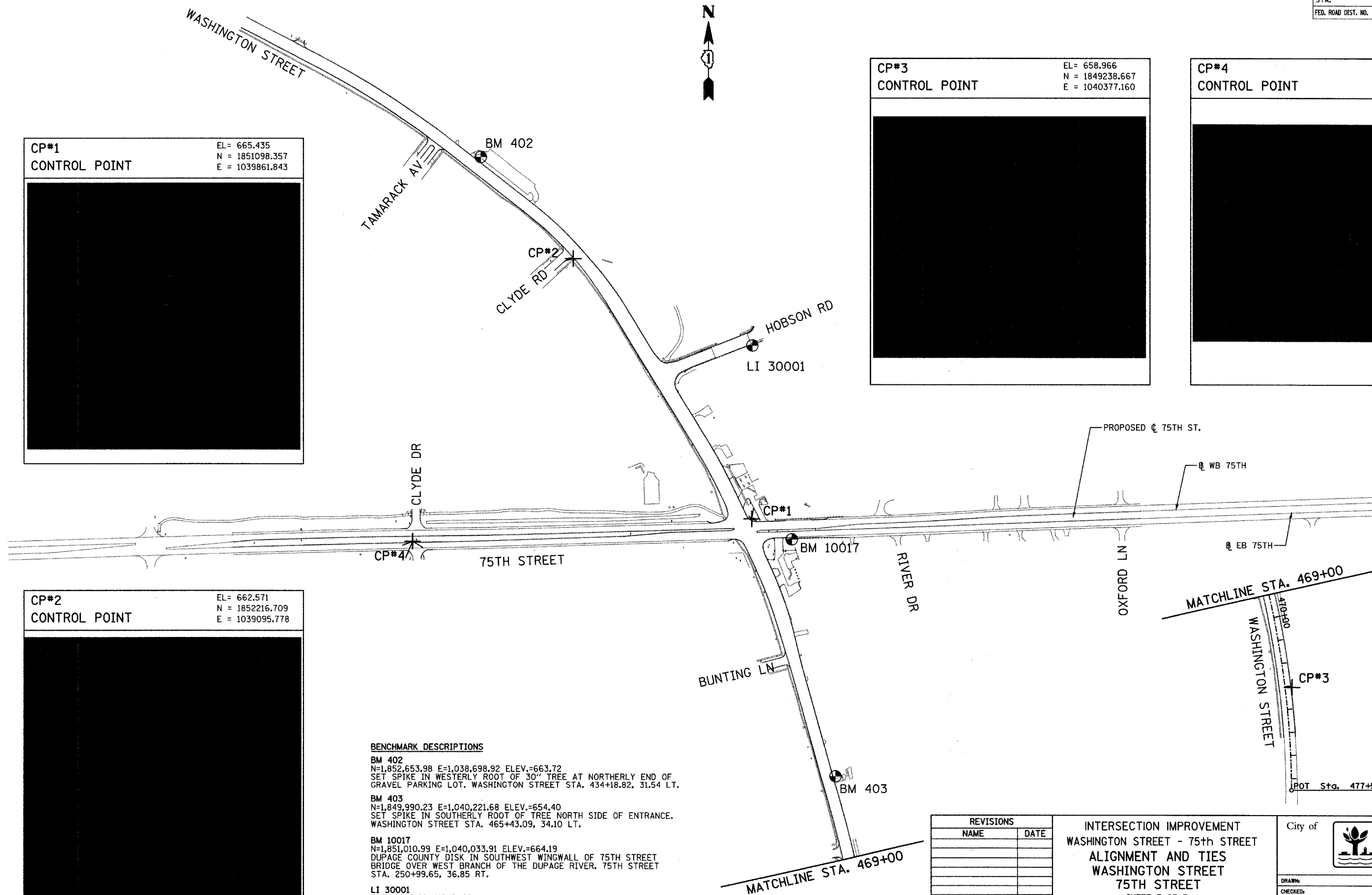
EL= 658.966
N = 1849238.667
E = 1040377.160

CP#4
CONTROL POINT

EL= 686.620
N = 1851000.617
E = 1038406.157

CP#2
CONTROL POINT

EL= 662.571
N = 1852216.709
E = 1039095.778



BENCHMARK DESCRIPTIONS

BM 402
N=1,852,653.98 E=1,038,698.92 ELEV.=663.72
SET SPIKE IN WESTERLY ROOT OF 30" TREE AT NORTHERLY END OF GRAVEL PARKING LOT. WASHINGTON STREET STA. 434+18.82, 31.54 LT.

BM 403
N=1,849,990.23 E=1,040,221.68 ELEV.=654.40
SET SPIKE IN SOUTHERLY ROOT OF TREE NORTH SIDE OF ENTRANCE. WASHINGTON STREET STA. 465+43.09, 34.10 LT.


BM 10017
N=1,851,010.99 E=1,040,033.91 ELEV.=664.19
DUPAGE COUNTY DISK IN SOUTHWEST WINGWALL OF 75TH STREET BRIDGE OVER WEST BRANCH OF THE DUPAGE RIVER. 75TH STREET STA. 250+99.65, 36.85 RT.

LI 30001
ELEV.=660.28, NGVD 29
DUPAGE COUNTY BENCHMARK - BRONZE DISK IN SOUTHEAST WINGWALL OF HOBSON ROAD BRIDGE OVER WEST BRANCH OF THE DUPAGE RIVER.

REVISIONS	
NAME	DATE

INTERSECTION IMPROVEMENT
WASHINGTON STREET - 75th STREET
ALIGNMENT AND TIES
WASHINGTON STREET
75TH STREET
SHEET 3 OF 3

CONSULTANT
TYLIN INTERNATIONAL

City of  **Naperville**

DRAWN: _____ SHEET NO. _____
 CHECKED: _____
 APPROVED: _____
 DATE: APRIL 11, 2008
 SCALE: 1"=200'-0"
 JOB NO.: P-91-494-00 PROJECT NO.: M-CMM-7003 (985)

4/11/2008 10:50:00 AM