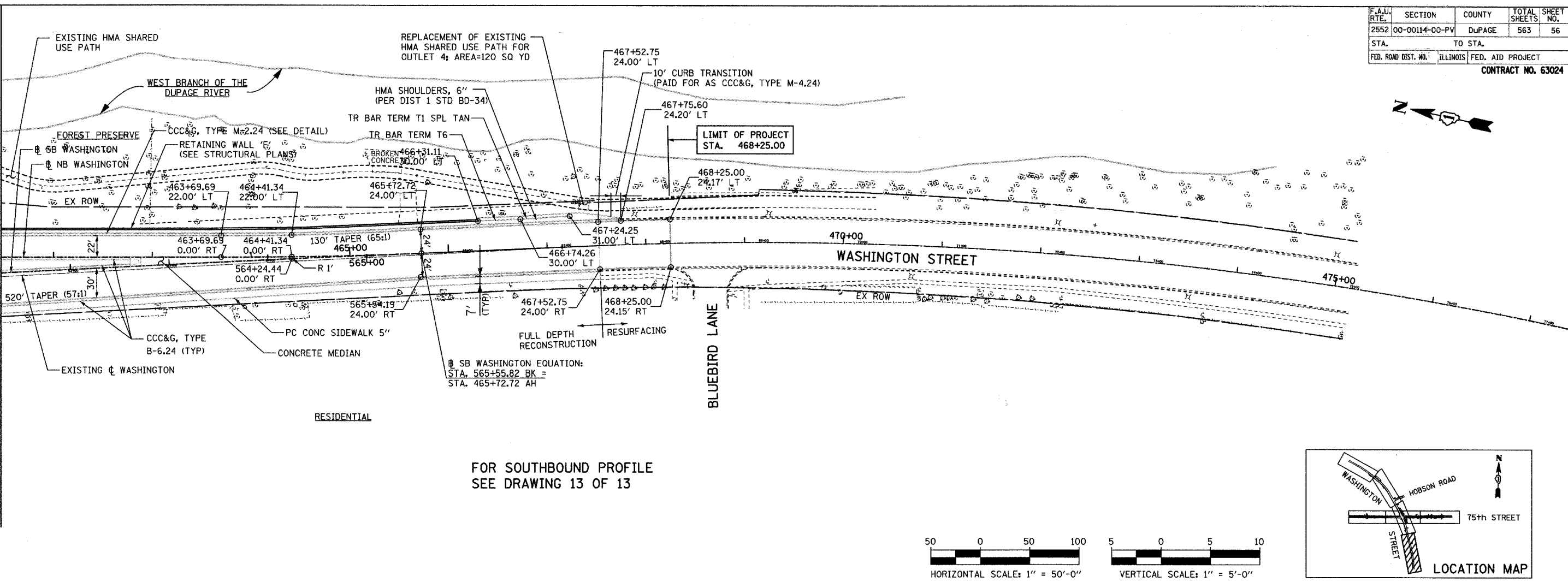


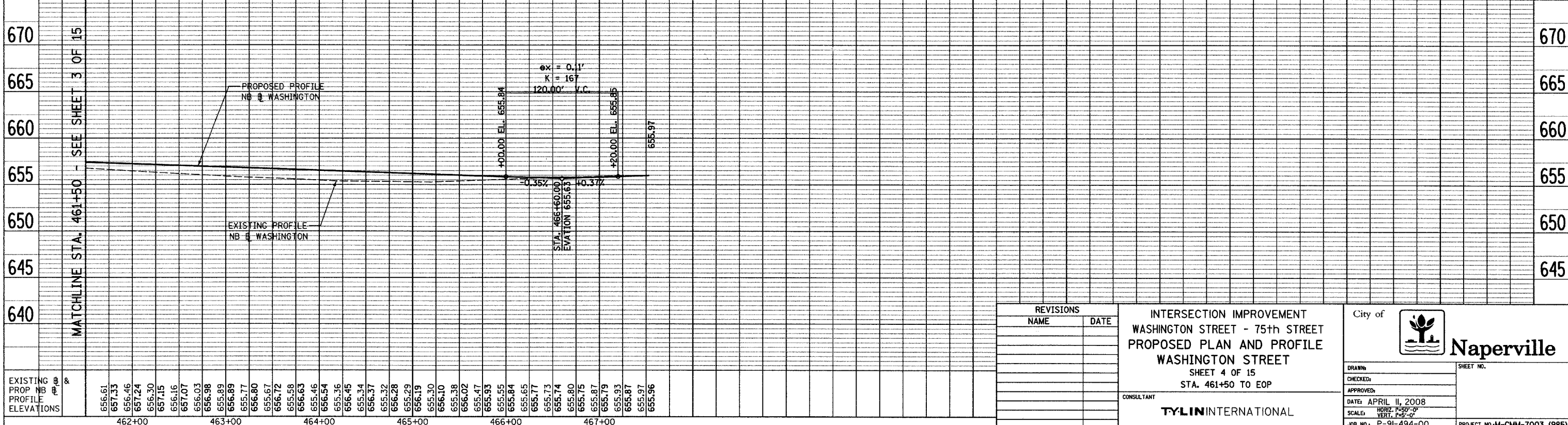
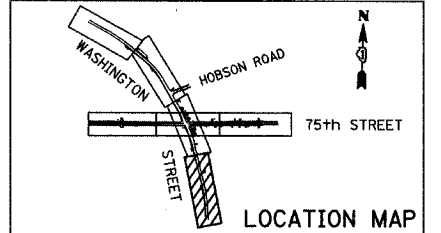
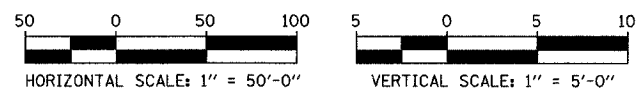
F.A.U. RTE.	SECTION	COUNTY	TOTAL SHEETS	SHEET NO.
2552	00-00114-00-PV	DuPAGE	563	56
STA.	TO STA.			
FED. ROAD DIST. NO.	ILLINOIS	FED. AID PROJECT		
CONTRACT NO. 63024				



MATCHLINE STA. 461+50 - SEE SHEET 3 OF 15



FOR SOUTHBOUND PROFILE  
SEE DRAWING 13 OF 13




EXISTING PROP NB PROFILE ELEVATIONS	462+00	463+00	464+00	465+00	466+00	467+00
	656.61	657.33	656.46	657.24	656.30	657.15
	657.07	656.03	656.98	655.89	656.89	655.77
	656.80	655.67	656.72	655.58	656.63	655.46
	656.54	655.36	656.45	655.34	656.37	655.32
	656.28	655.29	656.19	655.30	656.10	655.38
	656.02	655.47	655.93	655.55	656.44	655.84
	655.65	655.77	655.73	655.74	655.80	655.75
	655.87	655.87	655.87	655.79	655.93	655.87
	655.97	655.97	655.97	655.97	655.97	655.96

REVISIONS	
NAME	DATE

INTERSECTION IMPROVEMENT  
WASHINGTON STREET - 75th STREET  
PROPOSED PLAN AND PROFILE  
WASHINGTON STREET  
SHEET 4 OF 15  
STA. 461+50 TO EOP

CONSULTANT  
**TYLIN INTERNATIONAL**

City of  **Naperville**

DRAWN: \_\_\_\_\_ SHEET NO. \_\_\_\_\_  
 CHECKED: \_\_\_\_\_  
 APPROVED: \_\_\_\_\_  
 DATE: APRIL 11, 2008  
 SCALE: HORIZ. 1"=50'-0"  
 VERT. 1"=5'-0"  
 JOB NO.: P-91-494-00 PROJECT NO.: M-CMM-7003 (985)

4/11/2008 10:32 AM