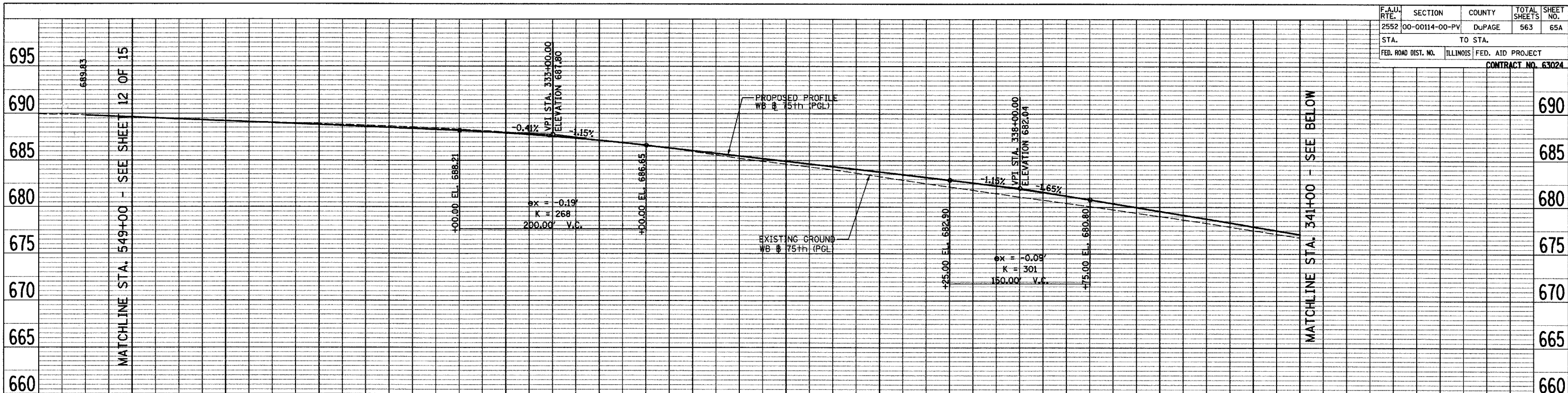
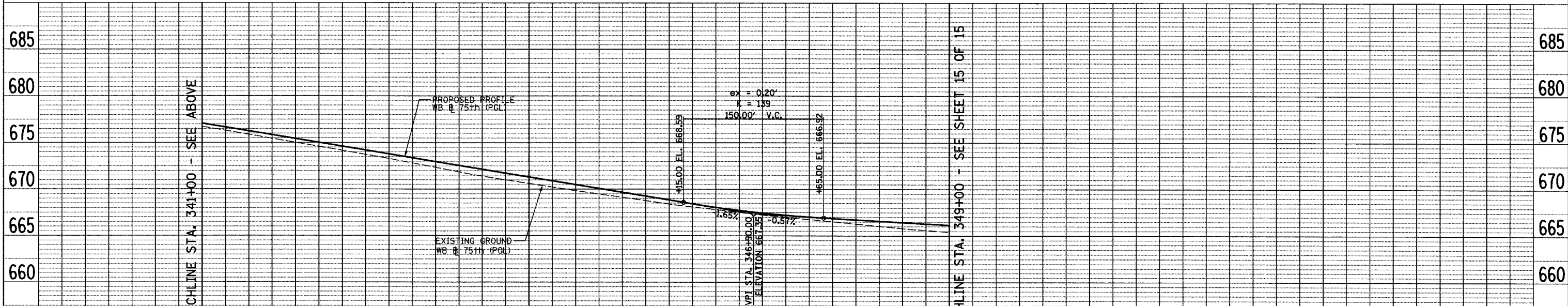
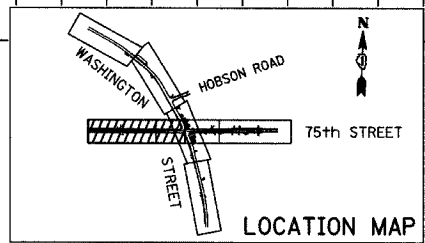
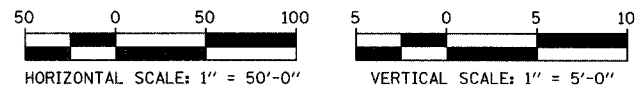


F.A.U. RTE.	SECTION	COUNTY	TOTAL SHEETS	SHEET NO.
2552	00-00114-00-PV	DUPAGE	563	65A
STA.	TO STA.			
FED. ROAD DIST. NO.	ILLINOIS	FED. AID PROJECT	CONTRACT NO. 63024	




EXISTING PROP SB PROFILE ELEVATIONS	PROPOSED PROFILE ELEVATIONS	STATION
689.83	689.83	328+00
689.85	689.85	328+10
689.72	689.72	328+20
689.61	689.61	328+30
689.63	689.63	328+40
689.50	689.50	328+50
689.53	689.53	328+60
689.39	689.39	328+70
689.42	689.42	328+80
689.30	689.30	328+90
689.32	689.32	329+00
689.23	689.23	329+10
689.15	689.15	329+20
689.12	689.12	329+30
689.07	689.07	329+40
689.02	689.02	329+50
688.99	688.99	329+60
688.92	688.92	329+70
688.91	688.91	329+80
688.82	688.82	329+90
688.83	688.83	330+00
688.71	688.71	330+10
688.75	688.75	330+20
688.61	688.61	330+30
688.65	688.65	330+40
688.51	688.51	330+50
688.55	688.55	330+60
688.41	688.41	330+70
688.45	688.45	330+80
688.31	688.31	330+90
688.32	688.32	331+00
688.21	688.21	331+10
688.19	688.19	331+20
688.09	688.09	331+30
688.03	688.03	331+40
687.96	687.96	331+50
687.80	687.80	331+60
687.80	687.80	331+70
687.56	687.56	331+80
687.61	687.61	331+90
687.38	687.38	332+00
687.41	687.41	332+10
687.18	687.18	332+20
687.18	687.18	332+30
686.94	686.94	332+40
686.92	686.92	332+50
686.69	686.69	332+60
686.65	686.65	332+70
686.34	686.34	332+80
686.36	686.36	332+90
685.98	685.98	333+00
686.07	686.07	333+10
685.60	685.60	333+20
685.78	685.78	333+30
685.23	685.23	333+40
685.50	685.50	333+50
684.92	684.92	333+60
685.21	685.21	333+70
684.60	684.60	333+80
684.92	684.92	333+90
684.30	684.30	334+00
684.63	684.63	334+10
684.00	684.00	334+20
684.34	684.34	334+30
683.63	683.63	334+40
684.06	684.06	334+50
683.27	683.27	334+60
683.77	683.77	334+70
682.90	682.90	334+80
683.48	683.48	334+90
682.53	682.53	335+00
683.19	683.19	335+10
682.17	682.17	335+20
682.90	682.90	335+30
681.82	681.82	335+40
682.61	682.61	335+50
681.46	681.46	335+60
682.29	682.29	335+70
681.10	681.10	335+80
681.95	681.95	335+90
680.76	680.76	336+00
681.59	681.59	336+10
680.42	680.42	336+20
681.20	681.20	336+30
680.08	680.08	336+40
680.80	680.80	336+50
679.74	679.74	336+60
680.39	680.39	336+70
679.37	679.37	336+80
679.98	679.98	336+90
679.01	679.01	337+00
679.56	679.56	337+10
678.64	678.64	337+20
679.15	679.15	337+30
678.27	678.27	337+40
678.74	678.74	337+50
677.89	677.89	337+60
678.33	678.33	337+70
677.51	677.51	337+80
677.91	677.91	337+90
677.12	677.12	338+00
677.50	677.50	338+10
676.74	676.74	338+20
677.09	677.09	338+30



EXISTING PROP SB PROFILE ELEVATIONS	PROPOSED PROFILE ELEVATIONS	STATION
677.09	677.09	341+00
676.31	676.31	341+10
676.68	676.68	341+20
675.88	675.88	341+30
676.26	676.26	341+40
675.44	675.44	341+50
675.85	675.85	341+60
675.01	675.01	341+70
675.44	675.44	341+80
674.58	674.58	341+90
675.03	675.03	342+00
674.15	674.15	342+10
674.61	674.61	342+20
673.72	673.72	342+30
674.20	674.20	342+40
673.28	673.28	342+50
673.79	673.79	342+60
672.81	672.81	342+70
673.37	673.37	342+80
672.33	672.33	342+90
672.96	672.96	343+00
671.86	671.86	343+10
672.55	672.55	343+20
671.38	671.38	343+30
672.14	672.14	343+40
670.99	670.99	343+50
671.72	671.72	343+60
670.61	670.61	343+70
671.51	671.51	343+80
670.90	670.90	343+90
669.83	669.83	344+00
670.49	670.49	344+10
669.47	669.47	344+20
670.07	670.07	344+30
669.11	669.11	344+40
669.66	669.66	344+50
668.75	668.75	344+60
669.25	669.25	344+70
668.39	668.39	344+80
668.84	668.84	344+90
668.10	668.10	345+00
668.43	668.43	345+10
667.81	667.81	345+20
668.05	668.05	345+30
667.52	667.52	345+40
667.73	667.73	345+50
667.23	667.23	345+60
667.45	667.45	345+70
666.99	666.99	345+80
667.21	667.21	345+90
666.75	666.75	346+00
667.02	667.02	346+10
666.51	666.51	346+20
666.87	666.87	346+30
666.27	666.27	346+40
666.72	666.72	346+50
666.03	666.03	346+60
666.58	666.58	346+70
665.79	665.79	346+80
666.44	666.44	346+90
665.59	665.59	347+00
666.30	666.30	347+10
665.40	665.40	347+20
666.15	666.15	347+30

REVISIONS	
NAME	DATE

INTERSECTION IMPROVEMENT
 WASHINGTON STREET - 75th STREET
 PROPOSED WESTBOUND PROFILE
 75th STREET
 SHEET 14 OF 15
 STA. 328+00 TO STA. 349+000
 CONSULTANT
TYLIN INTERNATIONAL

City of  **Naperville**

DRAWN: _____ SHEET NO. _____
 CHECKED: _____
 APPROVED: _____
 DATE: APRIL 11, 2008
 SCALE: HORIZ. 1"=50'-0" VERT. 1"=5'-0"
 JOB NO.: P-91-494-00 PROJECT NO.: M-CMM-7003 (985)