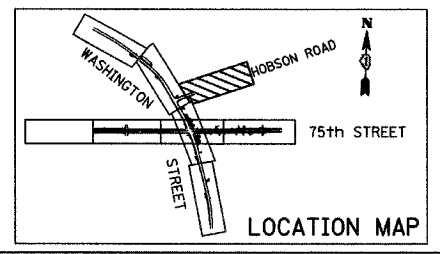
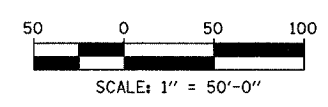


**LEGEND:**

- CONSTRUCTION ZONE
- TEMPORARY PAVEMENT
- TRAFFIC MOVEMENT
- TEMPORARY SIGN (SEE M.O.T. SIGNING LEGEND)
- TYPE II BARRICADES OR DRUMS W/ MONO-DIRECTIONAL STEADY BURNING LIGHT
- TYPE III BARRICADE W/2 FLASHING BIDIRECTIONAL LIGHTS
- TEMPORARY CONCRETE BARRIER
- ARROW BOARD

**NOTE:**

THE HOBSON ROAD LAYOUT LINE IS PROVIDED FOR CONTRACTOR CONVENIENCE ONLY. THE LINE IS TIED TO THE HOBSON ROAD CENTERLINE TO THE WEST. HOWEVER, THE LINE IS NOT TIED TO THE EAST.



REVISIONS	
NAME	DATE

**INTERSECTION IMPROVEMENT**  
**WASHINGTON STREET - 75th STREET**  
**MOT PLAN - STAGE 1**  
**WASHINGTON STREET (HOBSON RD)**  
 SHEET 6 OF 6  
 STA. 702+25 TO STA. 708+00  
 CONSULTANT  
**TYLIN INTERNATIONAL**

City of **Naperville**

DRAWN	SHEET NO.
CHECKED:	
APPROVED:	
DATE: APRIL 11, 2008	
SCALE:	
JOB NO.: P-91-494-00	PROJECT NO.: M-CMM-7003 (985)

PAGE 02/17/08 10:27:04 AM 4/11/2008