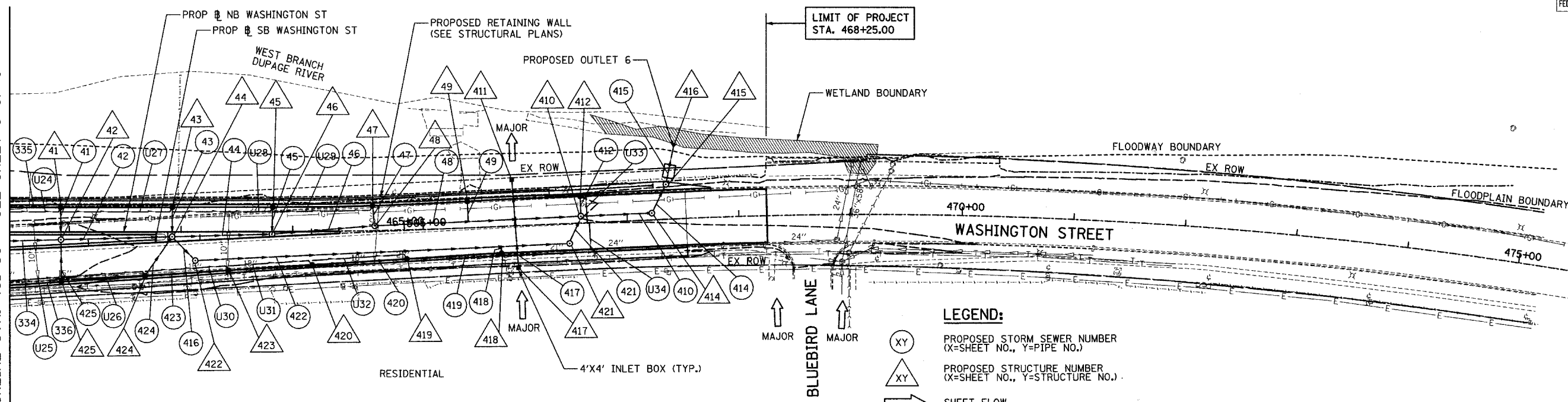


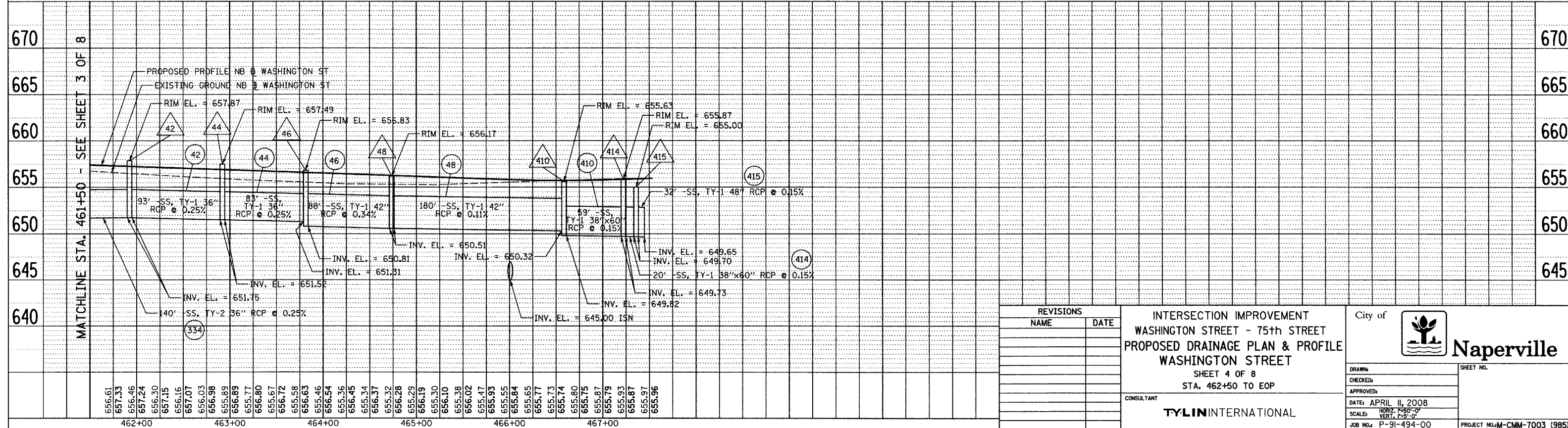
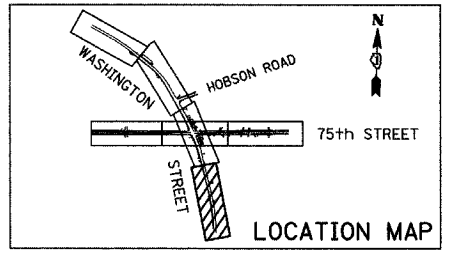
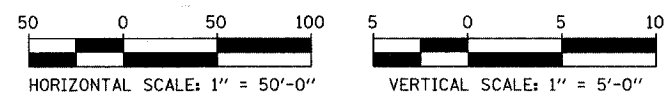
MATCHLINE STA. 461+50 - SEE SHEET 3 OF 8



- LEGEND:**
- (XY) PROPOSED STORM SEWER (X=SHEET NO., Y=PIPE NO.)
 - (XY) PROPOSED STRUCTURE NUMBER (X=SHEET NO., Y=STRUCTURE NO.)
 - SHEET FLOW
 - - - - - 10-YEAR FLOOD BOUNDARY (BASED ON FLOOD & GROUND ELEV)
 - - - - - FLOODPLAIN BOUNDARY (100-YEAR) (BASED ON FLOOD & GROUND ELEV)
 - - - - - FLOODWAY BOUNDARY (SCALED FROM FIRM MAP)
 - ISN INVERT SIPHON WITH NO BACKFLOW PREVENTION DEVICE

NOTES:

- FOR CLARITY, PIPE UNDERDRAINS ARE SHOWN OFFSET FROM THEIR PROPOSED LOCATIONS. FOR DETAILED PLACEMENT, SEE PROPOSED TYPICAL SECTIONS.



REVISIONS	
NAME	DATE

INTERSECTION IMPROVEMENT
 WASHINGTON STREET - 75th STREET
 PROPOSED DRAINAGE PLAN & PROFILE
 WASHINGTON STREET
 SHEET 4 OF 8
 STA. 462+50 TO EOP

CONSULTANT
TYLIN INTERNATIONAL

City of

Naperville

DRAWN:	SHEET NO.
CHECKED:	
APPROVED:	
DATE: APRIL 11, 2008	
SCALE: HORIZ. 1"=50'-0" VERT. 1"=5'-0"	
JOB NO. P-91-494-00	PROJECT NO. M-CMM-7003 (985)