

F.A.U. RTE.	SECTION	COUNTY	TOTAL SHEETS	SHEET NO.
2552	00-00114-00-PV	DUPAGE	563	134
STA.	TO STA.			
FED. ROAD DIST. NO.	ILLINOIS FED. AID PROJECT			
CONTRACT NO. 63024				

GENERAL NOTES:

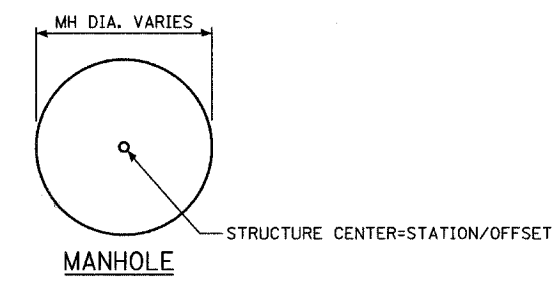
- BEFORE FINAL ACCEPTANCE OF THE PROJECT, ALL PROPOSED STORM SEWER LINES SHALL BE CLEANED AS DIRECTED BY THE ENGINEER. THE COST FOR THIS WORK IS CONSIDERED INCLUDED IN THE CONTRACT UNIT PRICE BID FOR STORM SEWERS OF THE TYPE, CLASS AND DIAMETER SPECIFIED.
- REMOVAL OF COMBINED OR SANITARY SEWERS WILL BE PAID AT THE CONTRACT UNIT PRICE PER FOOT FOR "STORM SEWER REMOVAL", OF THE DIAMETER SPECIFIED.
- WHERE EXISTING STORM SEWERS THAT ARE TO BE REMOVED AND ARE CONNECTED TO ANOTHER STRUCTURE OR SEWER THAT IS TO REMAIN IN PLACE, THE OPENING SHALL BE PLUGGED WITH CLASS SI CONCRETE. THE PLUGS SHALL BE PAID FOR SEPARATELY BUT WILL BE INCLUDED IN THE UNIT BID PRICE FOR "STORM SEWER REMOVAL" OF THE DIAMETER SPECIFIED.
- TEMPORARY STORM SEWER PLUGS INSTALLED AND REMOVED IN THE CONTRACT FOR STAGING PURPOSES WILL NOT BE PAID SEPARATELY, BUT WILL BE INCIDENTAL TO THE COST OF THE PROPOSED STORM SEWER
- ALL CONSTRUCTION SHALL BE DONE IN ACCORDANCE WITH THE "STANDARD SPECIFICATIONS FOR ROAD AND BRIDGE CONSTRUCTION", ADOPTED JANUARY 1, 2007; THE "SUPPLEMENTAL SPECIFICATIONS AND RECURRING SPECIAL PROVISIONS", ADOPTED JANUARY 1, 2008; THE LATEST EDITION OF THE "ILLINOIS MANUAL ON UNIFORM TRAFFIC CONTROL DEVICES FOR STREETS AND HIGHWAYS" (MUTCD); THE "STANDARD SPECIFICATIONS FOR TRAFFIC CONTROL ITEMS" (SSTCI); THE "DETAILS" IN THE PLANS AND THE "SPECIAL PROVISIONS" INCLUDED IN THE CONTRACT DOCUMENTS.
- ANY REFERENCE TO STANDARDS THROUGHOUT THE PLANS AND SPECIAL PROVISIONS SHALL BE INTERPRETED AS THE LATEST IDOT STANDARDS.
- BEFORE STARTING ANY EXCAVATION, THE CONTRACTOR SHALL CALL "J.U.L.I.E." AT 800-892-0123 FOR FIELD LOCATIONS OF BURIED ELECTRIC, TELEPHONE, CABLE AND GAS FACILITIES AND THE CITY OF NAPERVILLE (48-HOUR ADVANCE NOTIFICATION IS REQUIRED).
- ALL STORM SEWER CONNECTIONS WITH PIPES 27 INCHES IN DIAMETER AND SMALLER SHALL BE MADE WITH PRECAST "TEE" OR "WYE" PIPES. FOR PROPOSED STORM SEWER PIPES LARGER THAN 27 INCHES IN DIAMETER, OPENINGS OF THE SPECIFIED DIAMETER SHALL BE MADE IN THE PIPE AT THE TIME IT IS MANUFACTURED. PRECAST "TEE" AND "WYE" PIPE CONNECTIONS FOR PROPOSED STORM SEWER WILL NOT BE PAID FOR SEPARATELY BUT SHALL BE INCLUDED IN THE COST OF THE STORM SEWERS, OF THE TYPE AND SIZE SPECIFIED.
- HORIZONTAL CONTROL IS ILLINOIS STATE PLANE COORDINATES (NORTH AMERICAN DATUM 83 - NAD 83). VERTICAL CONTROL IS NGVD 29.
- STORM SEWER, WATER MAIN GRADE, IS TO BE USED AT LOCATIONS WHERE LATERAL SEPARATION BETWEEN THE SEWER AND WATER MAIN IS LESS THAN 10 FEET AND THE WATER MAIN INVERT IS LESS THAN 18 INCHES ABOVE THE STORM SEWER CROWN.
- STORM SEWER, RUBBER GASKET IS TO BE USED AT LOCATIONS WHERE THE WATER MAIN CROSSES BELOW THE SEWER, REGARDLESS OF VERTICAL SEPARATION OR WHERE THE BOTTOM OF THE WATER MAIN IS LESS THAN 18 INCHES ABOVE THE TOP OF THE SEWER.
- A "BOXED" NOTE INDICATES AN ITEM OF WORK THAT IS NOT PAID FOR SEPARATELY, BUT IS PAID FOR AS PART OF ANOTHER ITEM LISTED IN THE SUMMARY OF QUANTITIES.
- THE CONTRACTOR SHALL BE RESPONSIBLE FOR PROTECTION OF TREES AND SHRUBS IN ACCORDANCE WITH ARTICLE 201.05 OF THE "STANDARD SPECIFICATIONS FOR ROAD AND BRIDGE CONSTRUCTION".
- DIMENSIONS: IT SHALL BE THE CONTRACTOR'S RESPONSIBILITY TO VERIFY ALL DIMENSIONS AND CONDITIONS EXISTING IN THE FIELD PRIOR TO ORDERING MATERIALS AND BEGINNING CONSTRUCTION.
- IN LOCATIONS WHERE EXISTING DRAINAGE STRUCTURES, EXISTING STORM SEWERS AND EXISTING FLARED END SECTIONS ARE IN CONFLICT WITH THE INSTALLATION OF THE PROPOSED DRAINAGE STRUCTURES AND STORM SEWERS, REMOVAL OF THE EXISTING ITEMS SHALL NOT BE PAID FOR SEPARATELY BUT SHALL BE INCLUDED IN THE COST OF DRAINAGE STRUCTURES OR STORM SEWERS, OF THE TYPE AND SIZE SPECIFIED.
- THE LOCATIONS OF EXISTING DRAINAGE STRUCTURES, STORM AND SANITARY SEWERS, WATER SERVICE LINES AND OTHER UTILITY LINES ARE APPROXIMATE, AND IDOT DOES NOT GUARANTEE THEIR ACCURACY. THEIR EXACT HORIZONTAL AND VERTICAL LOCATIONS ARE TO BE DETERMINED IN THE FIELD BY THE CONTRACTOR AT HIS OWN EXPENSE. THE CONTRACTOR SHALL CONTACT J.U.L.I.E. PRIOR TO CONSTRUCTION AND COORDINATE ACTIVITIES WITH THE ENGINEER.
- THE CONTRACTOR SHALL BE RESPONSIBLE FOR THE PROTECTION OF ALL UNDERGROUND OR SURFACE UTILITIES EVEN THOUGH THEY MAY NOT BE SHOWN ON THE PLANS. ANY UTILITY THAT IS DAMAGED DURING CONSTRUCTION SHALL BE REPAIRED OR REPLACED TO THE SATISFACTION OF THE ENGINEER. THIS WORK SHALL BE AT THE CONTRACTOR'S EXPENSE.
- ANY EXISTING OR PROPOSED STORM SEWER DAMAGED BY THE CONTRACTOR DURING CONSTRUCTION SHALL BE REPLACED TO THE SATISFACTION OF THE ENGINEER AT THE CONTRACTOR'S EXPENSE.
- ANY ABANDONED UTILITY OR SEWER ENCOUNTERED DURING CONSTRUCTION OR ANY EXISTING UTILITY OR SEWER ABANDONED AS PART OF THE CONSTRUCTION THAT IS NOT BEING FILLED WITH C.L.S.M., AS PER PLAN, SHALL BE PLUGGED AS DIRECTED BY THE ENGINEER AND ABANDONED IN PLACE. THIS WORK SHALL BE INCLUDED IN THE COST OF THE CONTRACT.
- DURING CONSTRUCTION OPERATIONS, IF ANY LOOSE MATERIAL IS DEPOSITED IN THE FLOW LINE OF DRAINAGE STRUCTURES SUCH THAT THE NATURAL FLOW OF WATER IS OBSTRUCTED, THE MATERIAL SHALL BE REMOVED AT THE CLOSE OF EACH WORKING DAY. AT THE CONCLUSION OF CONSTRUCTION OPERATIONS, ALL UTILITY STRUCTURES SHALL BE FREE FROM DIRT AND DEBRIS. THE WORK SPECIFIED ABOVE WILL NOT BE PAID SEPARATELY BUT SHALL BE INCLUDED IN THE COST OF THE CONTRACT.
- THE CONTRACTOR SHALL MAINTAIN THE SURFACE DRAINAGE OF ALL ROADWAYS DURING CONSTRUCTION OF THIS PROJECT. WHEN EXISTING DRAINAGE FACILITIES ARE DISTURBED, THE CONTRACTOR SHALL PROVIDE AND MAINTAIN TEMPORARY OUTLETS AND CONNECTIONS FOR ALL PRIVATE OR PUBLIC DRAINS, SEWERS, AND CATCH BASINS. HE SHALL PROVIDE FACILITIES TO TAKE IN ALL STORM WATER WHICH WILL BE RECEIVED BY THESE DRAINS AND SEWERS AND DISCHARGE THE SAME. HE SHALL PROVIDE AND MAINTAIN A PUMPING PLANT, IF NECESSARY, AND A TEMPORARY OUTLET AND BE PREPARED AT ALL TIMES TO DISPOSE OF THE WATER RECEIVED FROM THESE TEMPORARY CONNECTIONS UNTIL SUCH TIME AS THE PERMANENT CONNECTIONS WITH SEWERS ARE BUILT AND IN SERVICE. THIS WORK SHALL BE INCLUDED IN THE COST OF THE CONTRACT.

- ALL HYDRANTS AND AUXILIARY VALVES, FRAMES, GRATES, LIDS AND BOXES REMOVED FROM EXISTING WATER SERVICE OR SEWER STRUCTURES WHICH ARE TO BE ABANDONED OR ADJUSTED WITH A NEW OR DIFFERENT FRAME AND LID SHALL BE RETURNED TO THE APPLICABLE AGENCY. ALL HYDRANTS TO BE REMOVED SHALL BE REMOVED TO A MINIMUM DEPTH OF 3' FEET BELOW GRADE AND PLUGGED.
- STORM SEWER SHALL BE BACKFILLED IN ACCORDANCE WITH ARTICLE 550.07 (METHOD 1) OF THE "STANDARD SPECIFICATIONS FOR ROAD AND BRIDGE CONSTRUCTION". ALL TRENCH BACKFILL QUANTITIES FOR STORM SEWER HAVE BEEN COMPUTED AND SHALL BE PAID FOR IN ACCORDANCE WITH THE STATE OF ILLINOIS DEPARTMENT OF TRANSPORTATION DIVISION OF HIGHWAYS BUREAU OF CONSTRUCTION TRENCH BACKFILL TABLE, WHICH IS BASED ON INVERT DEPTH FROM EXISTING PAVEMENT. ANY TRENCH BACKFILL REQUIRED IN EXCESS OF THE COMPUTED QUANTITY, INCLUDING BEDDING MATERIAL, SHALL BE INCLUDED IN THE COST OF TRENCH BACKFILL.
- STORM SEWERS TO BE REMOVED SHALL NOT BE SALVAGED FOR RE-USE ON THIS PROJECT.
- THE CONTRACTOR SHALL USE CARE IN GRADING OR EXCAVATING NEAR ANY AND ALL EXISTING ITEMS THAT WILL NOT BE REMOVED. ANY DAMAGE DONE TO EXISTING ITEMS BY THE CONTRACTOR SHALL BE REPAIRED OR REPLACED AT THE CONTRACTOR'S OWN EXPENSE.
- THE CONTRACTOR SHALL BE RESPONSIBLE FOR THE REMOVAL AND CLEAN UP OF MUD AND OTHER DEBRIS TRACKED ON ALL STREETS LEADING TO THE PROJECT SITE CAUSED BY THE CONSTRUCTION OPERATIONS. THE CLEAN UP IS AT THE DISCRETION OF AND MUST BE DONE TO THE SATISFACTION OF THE ENGINEER.
- ALL TRENCHES, HOLES OR OTHER EXCAVATIONS REQUIRED FOR UTILITY INSTALLATION SHOULD BE BACK-FILLED, STABILIZED AT THE END OF EACH WORKING DAY. NO EXCAVATION SHOULD BE OPENED MORE THAN WHAT CAN BE STABILIZED BY THE END OF THE SAME DAY. IF AN EXCAVATION MUST BE LEFT UNSTABILIZED OR OPEN OVERNIGHT, SOIL EROSION AND SAFETY PROTECTION MEASURES SHALL BE INSTALLED.
- ALL WASTE GENERATED AS A RESULT OF CONSTRUCTION ACTIVITIES (CONCRETE TRUCK WASHOUT, CHEMICALS, LITTER, SANITARY WASTE OR ANY OTHER WASTE) SHALL BE PROPERLY DISPOSED OF AND BE PREVENTED FROM BEING CARRIED OFF THE SITE BY EITHER WIND OR WATER.
- NO WORK SHALL BE PERFORMED IN FLOWING WATER. WORK IN AND NEAR THE CRITICAL AREAS SHOULD BE ISOLATED FROM CONCENTRATED FLOWS OR STREAM FLOW. ONCE WORK IN THIS AREA BEGINS, PRIORITY SHALL BE GIVEN THE COMPLETION OF THE WORK AND FINAL STABILIZATION OF ALL DISTURBED AREAS.

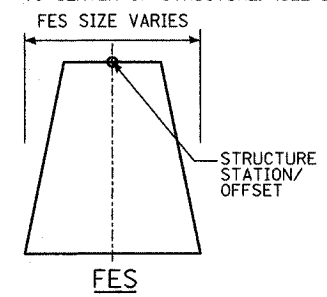
DRAINAGE SCHEDULE NOTES:

- INDICATES MANHOLE, TYPE A, TYPE 1 FRAME, CLOSED LID, WITH RESTRICTOR PLATE.
- INDICATES CATCH BASIN TYPE A WITH FLAT SLAB TOP.
- INDICATES MANHOLE TYPE A WITH FLAT SLAB TOP, IDOT STANDARD 602601.
- INDICATES SEWER LATERAL WITH 45° CONNECTION. SEE SHEET "DETAIL OF STORM SEWER CONNECTIONS TO SEWER."
- FES=FLARED END SECTION, ES=END SECTION. SIZE NOTED IN SCHEDULE IS GIVEN IN INCHES.
- SEE THE DRAINAGE & UTILITY PLANS FOR LOCATION OF ALL STRUCTURES.
- CATCH BASIN STATIONS AND OFFSETS ARE MEASURED TO EDGE OF PAVEMENT. (SEE BELOW)
- THE STATION/OFFSET/ELEVATION NOTED FOR ALL DRAINAGE STRUCTURES LOCATED IN THE CURB LINE AND/OR SHOULDER REFER TO THE POSITION OF THE ADJACENT PROPOSED EDGE OF PAVEMENT OR EDGE OF SHOULDER AS APPLICABLE. THE CONTRACTOR SHALL BE RESPONSIBLE FOR DETERMINING THE OFFSET NECESSARY FOR THE STRUCTURES TO SET THE FRAME AND GRATE IN THE PROPOSED LOCATION. THE STATION/OFFSET FOR ALL OTHER DRAINAGE STRUCTURES ARE DIMENSIONED TO THE CENTER OF STRUCTURE AND ELEVATION TO TOP OF GRATE.

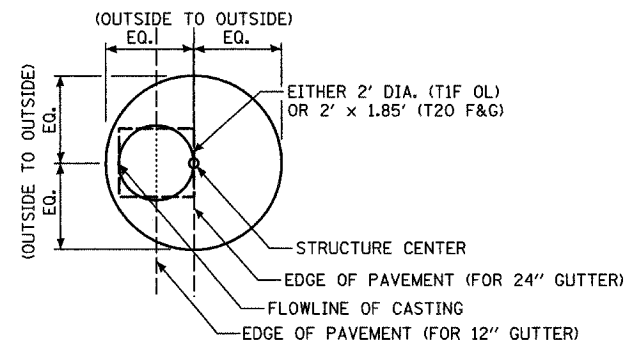
(PRECAST REINFORCED CONCRETE SECTION)
 (9) MANHOLE STATIONS AND OFFSETS ARE MEASURED TO CENTER OF STRUCTURE. (SEE BELOW)



(10) FLARED END SECTION STATIONS AND OFFSETS ARE MEASURED TO CENTER OF STRUCTURE. (SEE BELOW)



- INDICATES FLUSH INLET BOX FOR MEDIAN, IDOT STANDARD 542546
- ECCENTRIC CONES SHALL BE ROTATED SUCH THAT THE MANHOLE COVER IS IN THE CENTER OF THE TRAFFIC LANE.
- INDICATES REINFORCED CONCRETE END SECTION, CAST IN PLACE, IDOT STANDARD 542101-01.
- INDICATES REINFORCED CONCRETE END SECTION, CAST IN PLACE, IDOT STANDARD 542106-01.
- INDICATES REINFORCED CONCRETE END SECTION, CAST IN PLACE (SEE DRAINAGE DETAILS-END SECTION DETAIL)




CATCH BASIN
 (PRECAST REINFORCED CONCRETE SECTION)

REVISIONS	
NAME	DATE

INTERSECTION IMPROVEMENT
 WASHINGTON STREET - 75th STREET
 DRAINAGE GENERAL NOTES
 SHEET 1 OF 1

CONSULTANT
TYLIN INTERNATIONAL

City of  **Naperville**

DRAWN: _____ SHEET NO. _____
 CHECKED: _____
 APPROVED: _____
 DATE: APRIL 11, 2008
 SCALE: NONE
 JOB NO.: P-91-494-00 PROJECT NO.: M-CMM-7003 (985)