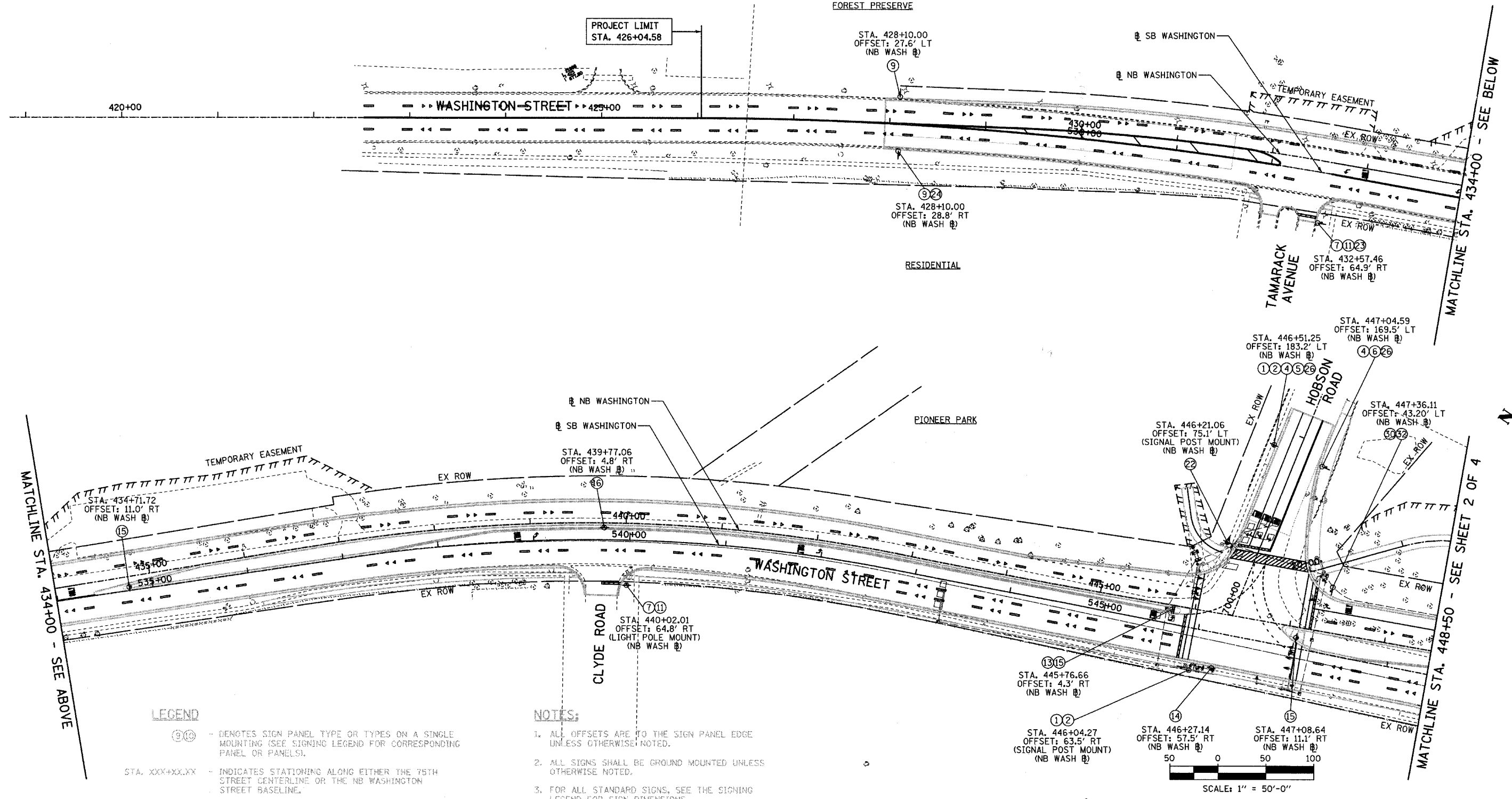


F.A.I.D. SECTION	COUNTY	TOTAL SHEETS	SHEET NO.
2552 00-00114-00-PV	DuPAGE	563	182
STA.	TO STA.		
FED. ROAD DIST. NO.	ILLINOIS	FED. AID PROJECT	
CONTRACT NO. 63024			

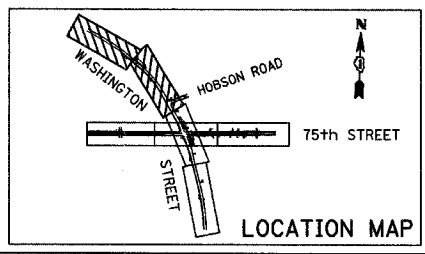


LEGEND

- (9) - DENOTES SIGN PANEL TYPE OR TYPES ON A SINGLE MOUNTING (SEE SIGNING LEGEND FOR CORRESPONDING PANEL OR PANELS).
- STA. XXX+XX.XX - INDICATES STATIONING ALONG EITHER THE 75TH STREET CENTERLINE OR THE NB WASHINGTON STREET BASELINE.
- OFFSET: XX.X' RT OR LT - INDICATES OFFSET FROM EITHER THE 75TH STREET CENTERLINE OR THE NB WASHINGTON STREET BASELINE.
- (SIGNAL POST MOUNT) - INDICATES MOUNTING TYPE; IF IT IS NOT DENOTED, THE PANEL IS GROUND MOUNTED.
- (75th ST) - DENOTES THE ALIGNMENT BEING USED FOR STATIONING AND OFFSET.

NOTES:

1. ALL OFFSETS ARE TO THE SIGN PANEL EDGE UNLESS OTHERWISE NOTED.
2. ALL SIGNS SHALL BE GROUND MOUNTED UNLESS OTHERWISE NOTED.
3. FOR ALL STANDARD SIGNS, SEE THE SIGNING LEGEND FOR SIGN DIMENSIONS.



REVISIONS	
NAME	DATE

**INTERSECTION IMPROVEMENT
WASHINGTON STREET - 75th STREET
PROPOSED SIGNING PLAN
WASHINGTON STREET
SHEET 1 OF 4
STA. 426+04.58 TO STA. 448+50.00**

CONSULTANT
TYLIN INTERNATIONAL

City of **Naperville**

DRAWN:	SHEET NO.:
CHECKED:	
APPROVED:	
DATE: APRIL 11, 2008	
SCALE:	
JOB NO. P-91-494-00	PROJECT NO. M-CMM-7003 (985)

4/11/2008 10:55:04 AM