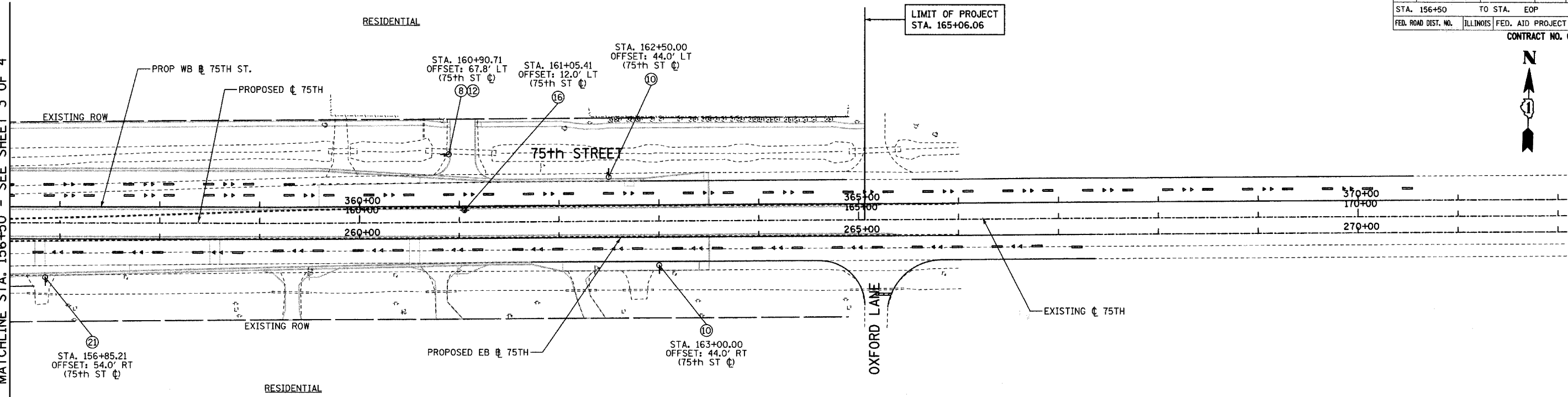


F.A.B. RTE.	SECTION	COUNTY	TOTAL SHEETS	SHEET NO.
2552	00-00114-00-PV	DuPAGE	563	185
STA. 156+50	TO STA.	EOP		
FED. ROAD DIST. NO.	ILLINOIS	FED. AID PROJECT		
CONTRACT NO. 63024				



MATCHLINE STA. 156+50 - SEE SHEET 3 OF 4

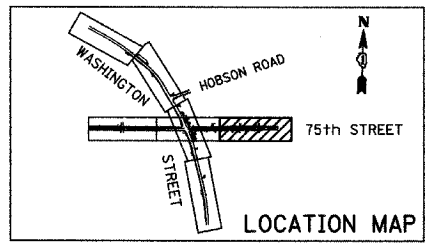
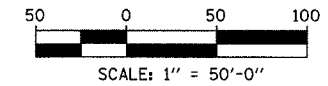


**LEGEND**

- (10) - DENOTES SIGN PANEL TYPE OR TYPES ON A SINGLE MOUNTING (SEE SIGNING LEGEND FOR CORRESPONDING PANEL OR PANELS).
- STA. XXX+XX.XX - INDICATES STATIONING ALONG EITHER THE 75TH STREET CENTERLINE OR THE NB WASHINGTON STREET BASELINE.
- OFFSET: XX.X' RT OR LT - INDICATES OFFSET FROM EITHER THE 75TH STREET CENTERLINE OR THE NB WASHINGTON STREET BASELINE.
- (SIGNAL POST MOUNT) - INDICATES MOUNTING TYPE; IF IT IS NOT DENOTED, THE PANEL IS GROUND MOUNTED.
- (75th ST) - DENOTES THE ALIGNMENT BEING USED FOR STATIONING AND OFFSET.

**NOTES:**

1. ALL OFFSETS ARE TO THE SIGN PANEL EDGE UNLESS OTHERWISE NOTED.
2. ALL SIGNS SHALL BE GROUND MOUNTED UNLESS OTHERWISE NOTED.
3. FOR ALL STANDARD SIGNS, SEE THE SIGNING LEGEND FOR SIGN DIMENSIONS.



REVISIONS	
NAME	DATE

**INTERSECTION IMPROVEMENT**  
**WASHINGTON STREET - 75th STREET**  
**PROPOSED SIGNING PLAN**  
**75th STREET**  
 SHEET 4 OF 4  
 STA. 156+50.00 TO 165+06.06  
 CONSULTANT  
**TYLIN INTERNATIONAL**

City of **Naperville**

DRAWN:	SHEET NO.:
CHECKED:	
APPROVED:	
DATE: APRIL 11, 2008	
SCALE:	
JOB NO.: P-91-494-00	PROJECT NO.: M-CMM-7003 (985)

4/11/2008 10:51:11 AM