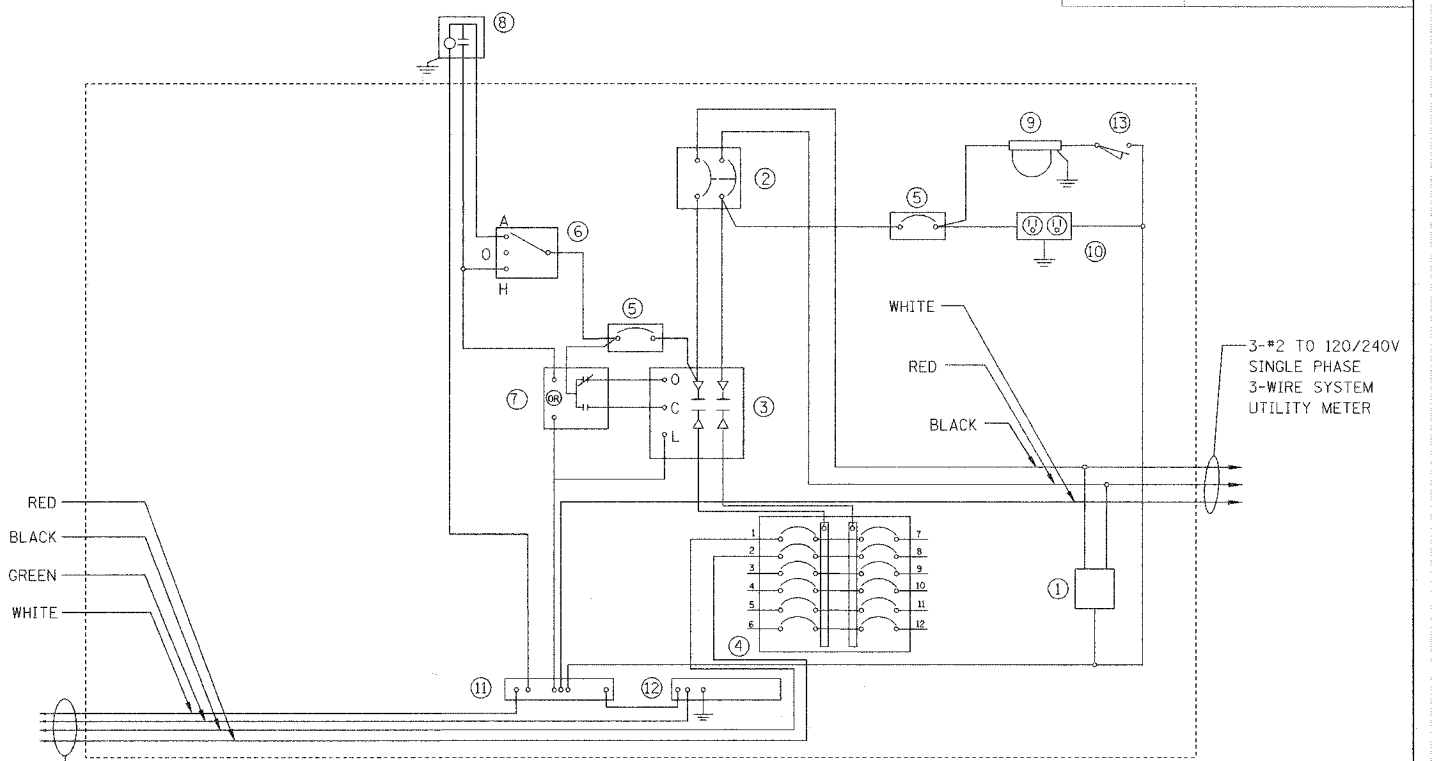


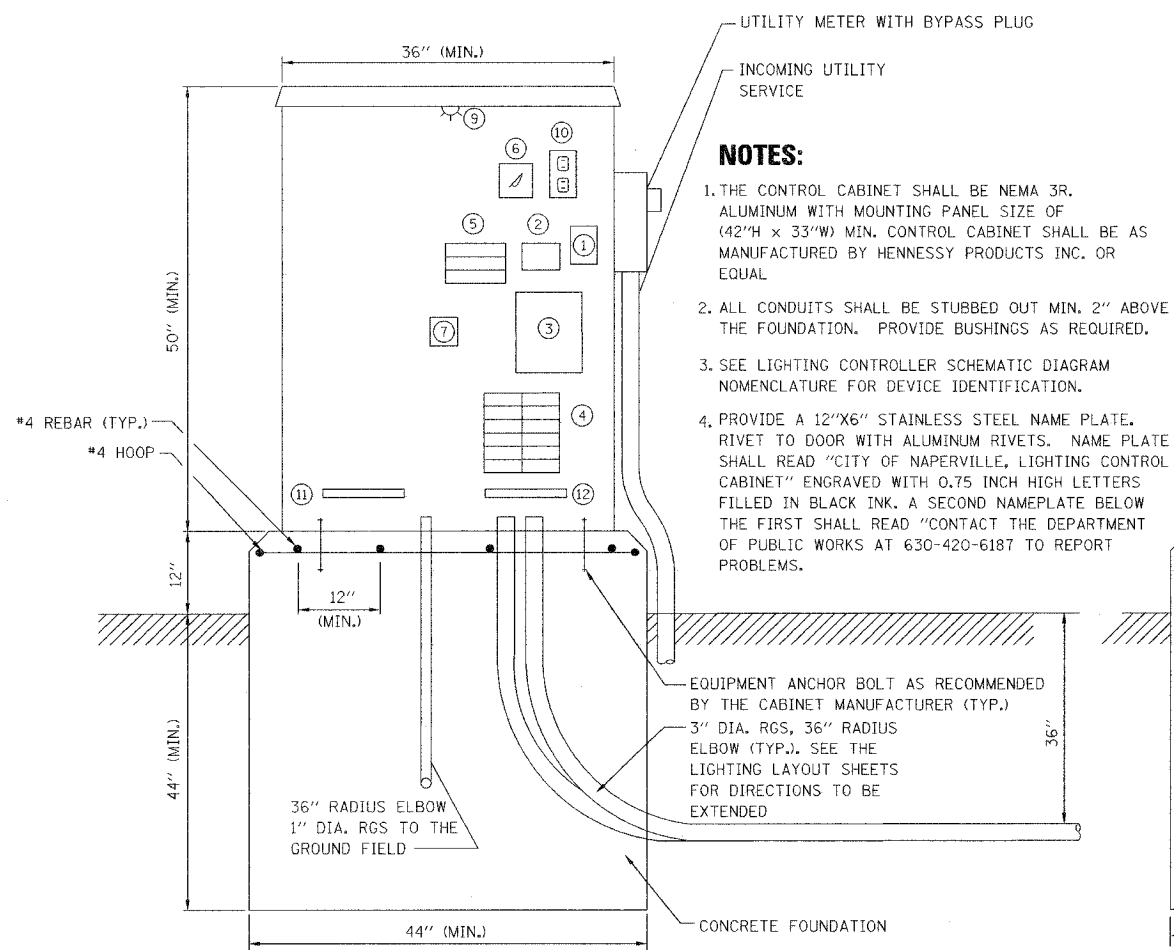
F.A.U. RTE.	SECTION	COUNTY	TOTAL SHEET
2552	00-00114-00-PV	DuPAGE	563
STA.	TO STA.		222
FED. ROAD DIST. NO.	ILLINOIS FED. AID PROJECT		

NOMENCLATURE

- ① 10000 AMP SURGE ARRESTOR (ELECTRONIC GUARD, EG 240 RC BY INTERMATIC).
- ② 100AMP, 2 POLE MAIN CIRCUIT BREAKER, 240V, 22KAIC (TYPE "TEB" BY GENERAL ELECTRIC OR TYPE "FAL" BY SQUARE D).
- ③ 100AMP, 2 POLE, SINGLE THROW, ELECTRICALLY OPERATED, MECHANICALLY HELD CONTACTOR (GENERAL ELECTRIC OR SQUARE D).
- ④ FIVE 20AMP, 1 POLE CIRCUIT BREAKERS, 250 (TYPE "TEB" BY GENERAL ELECTRIC OR TYPE "FAL" BY SQUARE D).
- ⑤ 15AMP, 1 POLE CIRCUIT BREAKER, 120V (TYPE "TEB" BY GENERAL ELECTRIC OR EQUAL).
- ⑥ 20AMP, SPDT, H-O-A SWITCH, 120V MOUNTED ON 4" X 4" BOX.
- ⑦ AUXILLIARY CONTROL RELAY WITH CONTACTS RATED FOR CONTACTOR INRUSH CURRENT.
- ⑧ PHOTO-CELL WITH 2 MINUTE TIME DELAY, 120V, MOUNTED ON LUMINAIRE CLOSEST TO THE CONTROLLER CABINET, BY "TORK" OR APPROVED EQUAL.
- ⑨ WATER PROOF INCANDESCENT LIGHTING FIXTURE WITH 120V, 60 WATT BULB.
- ⑩ 15AMP, 120V. DUPLEX GFCI OUTLET.
- ⑪ 1" X 12" NEUTRAL STRIP LABELED "NEUTRAL" AND JOINED TO THE GROUND STRIP WITH A BONDING JUMPER.
- ⑫ 1" X 12" GROUND STRIP LABELED "GROUND", AND PAINTED GREEN.
- ⑬ LIMIT SWITCH FOR CABINET LIGHT FIXTURE.



LIGHTING CONTROLLER SCHEMATIC DIAGRAM

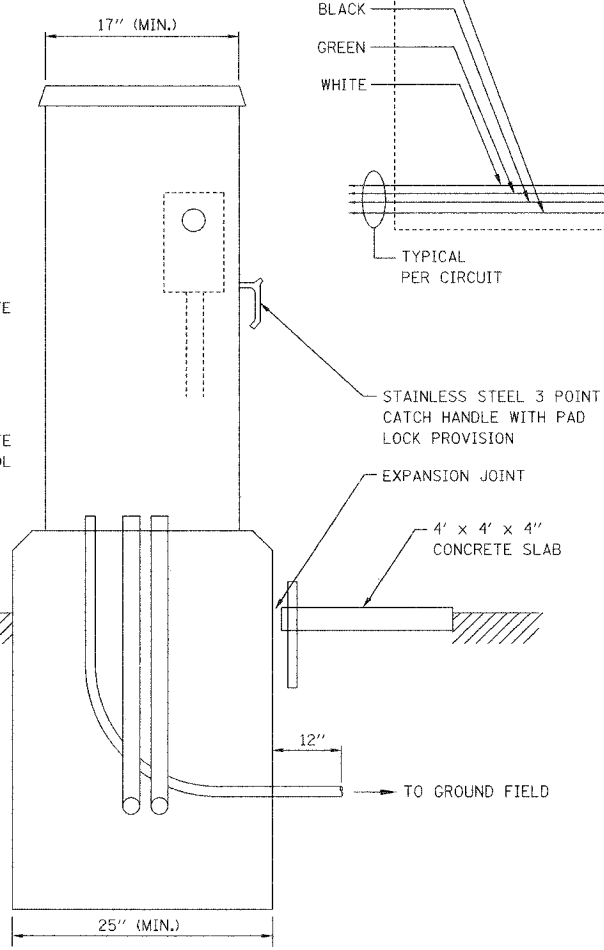


FRONT ELEVATION

LIGHTING CONTROL CABINET AND FOUNDATION DETAIL

NOTES:

- 1. THE CONTROL CABINET SHALL BE NEMA 3R ALUMINUM WITH MOUNTING PANEL SIZE OF (42"H x 33"W) MIN. CONTROL CABINET SHALL BE AS MANUFACTURED BY HENNESSY PRODUCTS INC. OR EQUAL
- 2. ALL CONDUITS SHALL BE STUBBED OUT MIN. 2" ABOVE THE FOUNDATION. PROVIDE BUSHINGS AS REQUIRED.
- 3. SEE LIGHTING CONTROLLER SCHEMATIC DIAGRAM NOMENCLATURE FOR DEVICE IDENTIFICATION.
- 4. PROVIDE A 12"x6" STAINLESS STEEL NAME PLATE. RIVET TO DOOR WITH ALUMINUM RIVETS. NAME PLATE SHALL READ "CITY OF NAPERVILLE, LIGHTING CONTROL CABINET" ENGRAVED WITH 0.75 INCH HIGH LETTERS FILLED IN BLACK INK. A SECOND NAMEPLATE BELOW THE FIRST SHALL READ "CONTACT THE DEPARTMENT OF PUBLIC WORKS AT 630-420-6187 TO REPORT PROBLEMS."



LEFT SIDE ELEVATION

REVISIONS	
NAME	DATE

INTERSECTION IMPROVEMENT
WASHINGTON STREET - 75th STREET
ELECTRICAL DETAILS
SHEET 1 OF 4

CONSULTANT
TYLIN INTERNATIONAL

City of		Naperville
DRAWN: FO	CHECKED: FI	APPROVED: DEM
DATE: 04/11/08	SCALE:	JOB NO. P-91-494-00
SHEET NO.	PROJECT NO. CMM-7003 (983)	

