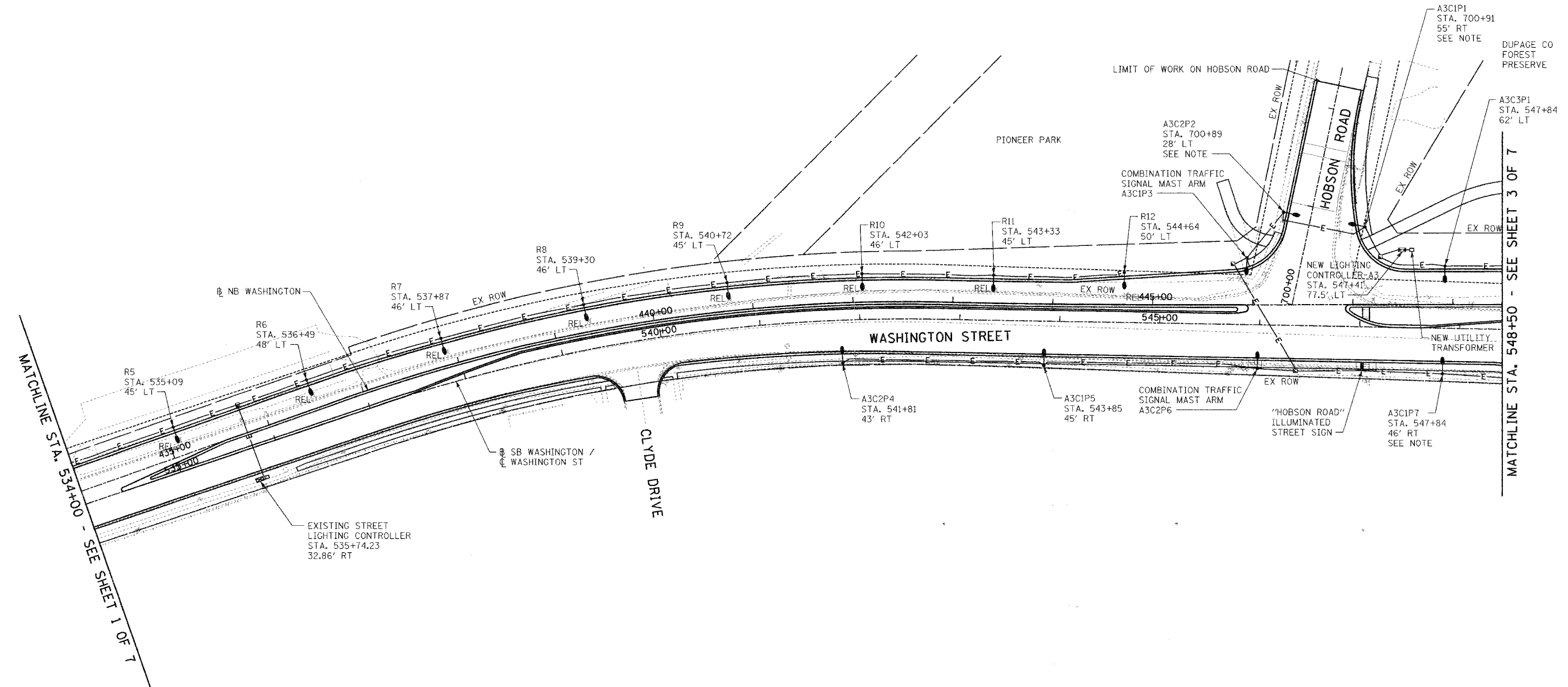
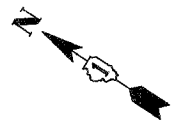


F.A.U. RTE.	SECTION	COUNTY	TOTAL SHEETS	SHEET NO.
2552	00-00114-00-PV	DUPAGE	563	230
STA.	TO STA.			
FED. ROAD DIST. NO.	ILLINOIS	FED. AID PROJECT		



MATCHLINE STA. 534+00 - SEE SHEET 1 OF 7

MATCHLINE STA. 548+50 - SEE SHEET 3 OF 7


NOTE:
LIGHT POLE MOUNTING ARE WILL BE SPECIFIED AS 35' WITH 10' MAST ARM LENGTH.



REVISIONS	
NAME	DATE

INTERSECTION IMPROVEMENT
WASHINGTON STREET - 75th STREET
PROPOSED ELECTRICAL PLAN
WASHINGTON STREET
SHEET 2 OF 7
STA. 534+00 TO STA. 548+50

CONSULTANT
TYLIN INTERNATIONAL

City of  **Naperville**

DRAWN: FO	SHEET NO.
CHECKED: FI	
APPROVED: DEM	
DATE: 04/11/08	
SCALE: 1"=50'-0"	
JOB NO.: P-91-494-00	PROJECT NO.: CMM-7003 (983)