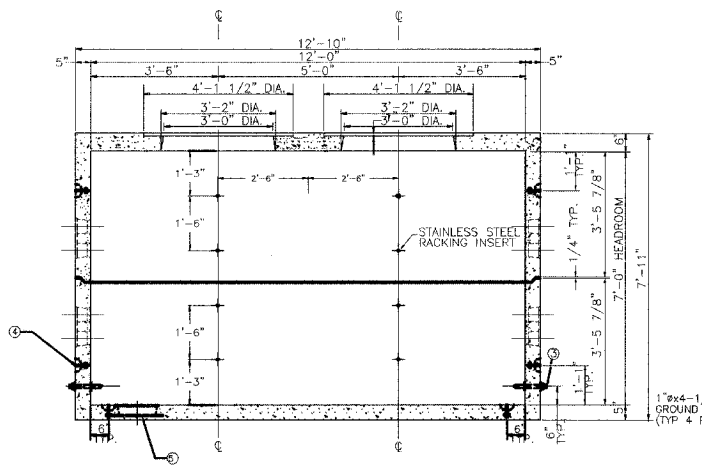


PLAN VIEW

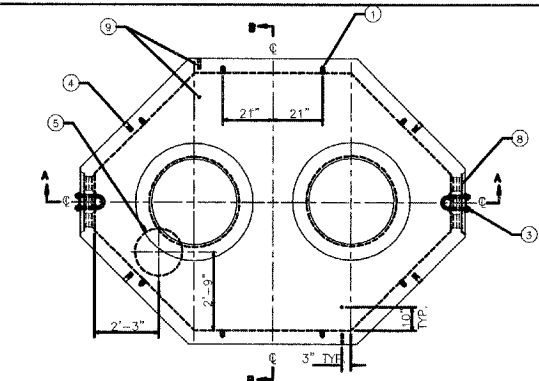


SECTION A-A

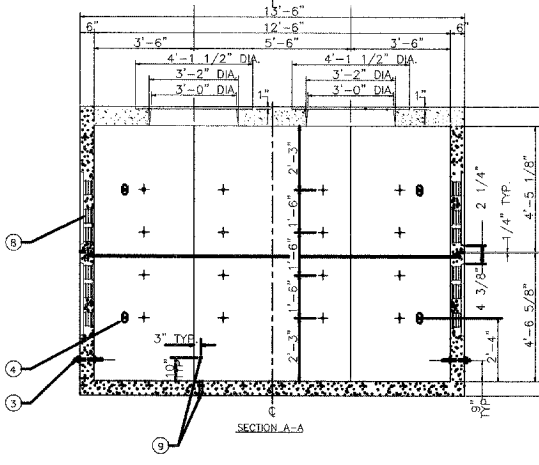
ITEM	DESCRIPTION	QTY	NOTE
①	TOTAL MANHOLE WEIGHT	5000 P.S.I. CONC.	40,615 LBS.
②	TOP SECTION WEIGHT		13,570 LBS.
③	BASE SECTION WEIGHT		27,045 LBS.
④	REBAR, GR. 60, EPOXY COATED	2	
⑤	6" DUCT TERMINATORS	24	
⑥	1" BUTYL RUBBER JOINT SEALANT ROLLS		
⑦	SUMP GRATE & 12"x12"x1/8" P.	1	4
⑧	5" LIFTING ANCHORS	12	
⑨	1" S/S PULLING IRONS	2	
⑩	1/2" x 3" DEEP, S/S INSERTS WITH 1/2" x 3" S/S HEX HEAD BOLT AND WASHER	16	

- NOTES:
- CONCRETE: 5000 psi @ 28 DAYS, 5%-8% ENTRAINED AIR, 4" MAX. SLUMP.
  - REBAR: ASTM A-615 GRD. 60, EPOXY COATED
  - PULLING IRON: 1" STAINLESS STEEL
  - ADD GROUNDROD KNOCKOUTS IN FLOOR AND WALLS.
  - RACKING INSERTS: STAINLESS STEEL.
  - IDENTIFICATION: IMPRESSED INTO CEILING OF VAULT.
  - DESIGN CRITERIA: DESIGNED AND BUILT IN ACCORDANCE WITH ASTM C859 "STANDARD SPECIFICATION FOR UNDERGROUND PRECAST CONCRETE UTILITY STRUCTURES".
  - ALL LOADING AS PER ASTM C857 "MINIMUM STRUCTURAL DESIGN LOADING FOR UNDERGROUND PRECAST CONCRETE UTILITY STRUCTURES" INCLUDING:
    - EARTH COVER: MIN. 2.0', MAX. 5.0'
    - AASHTO HS-20 WHEEL LOAD AND APPLICABLE IMPACT.
    - VERTICAL AND LATERAL SOIL PRESSURES DETERMINED USING A SOIL DENSITY OF 120 PCF.
    - GROUNDWATER AT 3'-0" BELOW GRADE.
  - STRUCTURAL DESIGN PERFORMED USING AASHTO STRENGTH DESIGN METHOD.
  - REINFORCING COVER REQUIREMENTS AS PER ACI 318.
  - SEE SPECIFICATION C30-1900 FOR ROW IDENTIFICATION WITH CONDUIT.

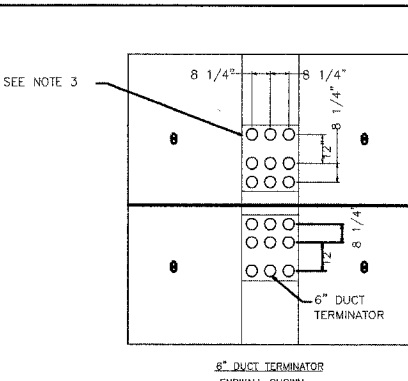
INDEPENDENT PUBLIC UTILITIES DEPARTMENT ELECTRIC DIVISION TYPE A MANHOLE DATE 02-02-03 M30-1140



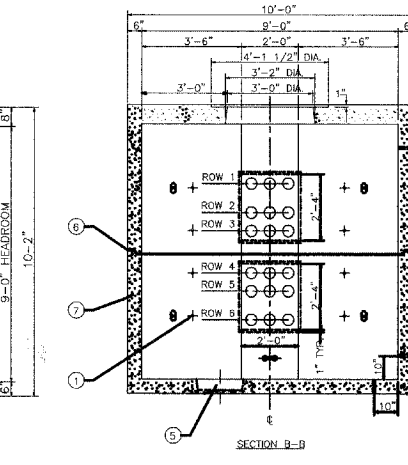
PLAN VIEW



SECTION A-A



6" DUCT TERMINATOR ENDWALL SHOWN

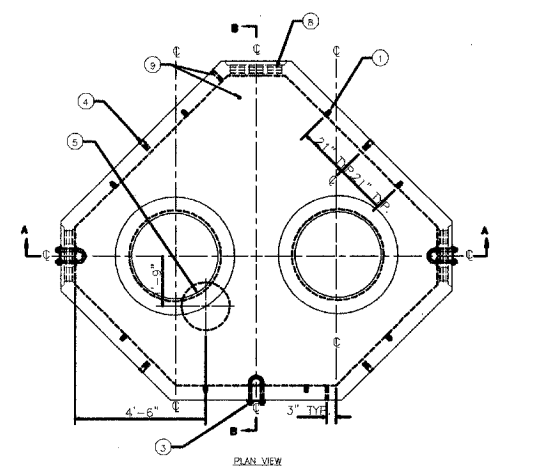


SECTION B-B

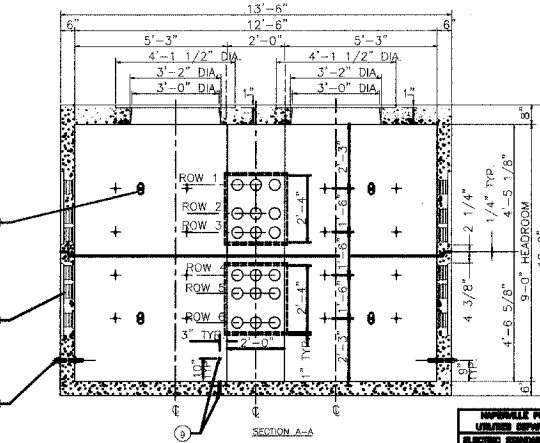
F.A. RTE.	2552	SECTION	COUNTY	TOTAL SHEETS	SHEET NO.
		00-0014-00-PV	DUPAGE	563	271
STA. TO STA.					
FED. ROAD DIST. NO. ILLINOIS FED. AID PROJECT					
CONTRACT 63024					
ITEM	DESCRIPTION	QTY	NOTE		
①	TOTAL MANHOLE WEIGHT	5000 P.S.I. CONC.	42,470 LBS.	1	
②	TOP SECTION WEIGHT		21,470 LBS.		
③	BASE SECTION WEIGHT		21,000 LBS.		
④	REBAR, EPOXY COATED			2	
⑤	1" x 5 1/2" GROUND WIRE HOLE, 1/2" KNOCKOUT			4	
⑥	6" DUCT TERMINATORS			36	3
⑦	1" BUTYL RUBBER JOINT SEALANT			4	ROLLS
⑧	IBT SUMP DEPRESSION			1	
⑨	6" LIFTING ANCHORS			8	
⑩	1" S/S PULLING IRONS			2	4
⑪	CABLE RACK INSERTS: 1/2" 304 STAINLESS STEEL THREADED INSERTS EACH WITH 1/2" x 2" 304 S.S. HEX HEAD BOLT, 1/2" S.S. WASHER, AND 1/2" PVC WASHER			32	

- NOTES:
- CONCRETE: 5000 psi @ 28 DAYS, 5%-8% ENTRAINED AIR, 4" MAX. SLUMP.
  - REBAR: ASTM A-615 GRD. 60, EPOXY COATED.
  - DUCT ENTRANCES: SINGLE DUCT TERMINATORS TO ACCEPT 6" DIAMETER SCH. 40 PVC CONDUIT. SEE DETAIL THIS SHEET.
  - PLEASE NOTE PULLING IRON DESIGNED AS PER A.C.I. 318 FOR WORKING LOAD CAPACITY OF 28,000 POUNDS APPLIED CONCURRENT TO THE MAJOR AXIS OF THE PULLING IRON.
  - IDENTIFICATION: IMPRESSED INTO CEILING OF VAULT.
  - DESIGN CRITERIA: DESIGNED AND BUILT IN ACCORDANCE WITH ASTM C859 "STANDARD SPECIFICATION FOR UNDERGROUND PRECAST CONCRETE UTILITY STRUCTURES".
  - ALL LOADING AS PER ASTM C857 "MINIMUM STRUCTURAL DESIGN LOADING FOR UNDERGROUND PRECAST CONCRETE UTILITY STRUCTURES" INCLUDING:
    - EARTH COVER: MIN. 2.0', MAX. 5.0'
    - AASHTO HS-20 WHEEL LOAD AND APPLICABLE IMPACT.
    - VERTICAL AND LATERAL SOIL PRESSURES DETERMINED USING A SOIL DENSITY OF 120 PCF.
    - GROUNDWATER AT 3'-0" BELOW GRADE.
  - STRUCTURAL DESIGN PERFORMED USING AASHTO STRENGTH DESIGN METHOD.
  - REINFORCING COVER REQUIREMENTS AS PER ACI 318.
  - SEE SPECIFICATION C30-1900 FOR ROW IDENTIFICATION WITH CONDUIT.

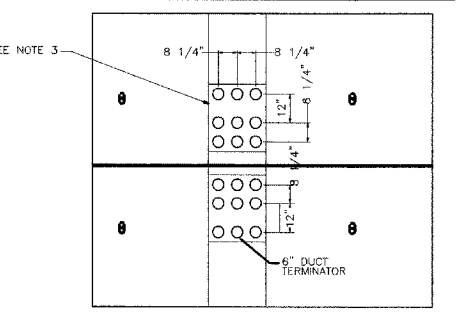
INDEPENDENT PUBLIC UTILITIES DEPARTMENT ELECTRIC DIVISION TYPE E MANHOLE DATE 02-02-03 M30-1180



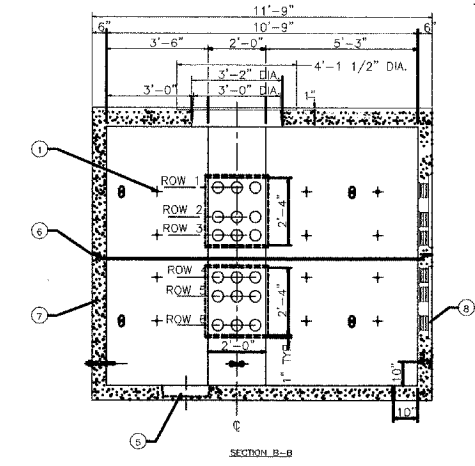
PLAN VIEW



SECTION A-A



6" DUCT TERMINATOR ENDWALL SHOWN



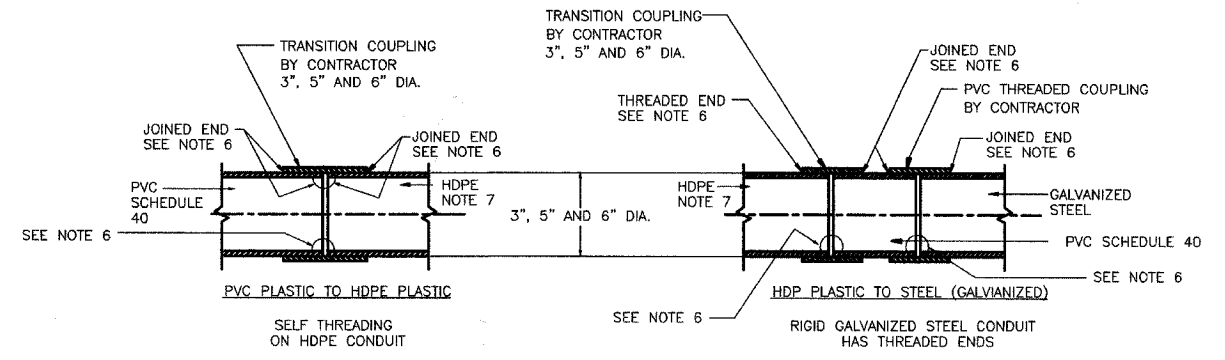
SECTION B-B

ITEM	DESCRIPTION	QTY	NOTE
①	TOTAL MANHOLE WEIGHT	9000 P.S.I. CONC.	45,470 LBS.
②	TOP SECTION WEIGHT		23,470 LBS.
③	BASE SECTION WEIGHT		22,000 LBS.
④	REBAR, EPOXY COATED		2
⑤	1" x 5 1/2" GROUND WIRE HOLE, 1/2" KNOCKOUT		4
⑥	6" DUCT TERMINATORS		54
⑦	1" BUTYL RUBBER JOINT SEALANT ROLLS		4
⑧	IBT SUMP DEPRESSION		1
⑨	6" LIFTING ANCHORS		8
⑩	1" S/S PULLING IRONS		3
⑪	CABLE RACK INSERTS: 1/2" 304 STAINLESS STEEL THREADED INSERTS EACH WITH 1/2" x 2" 304 S.S. HEX HEAD BOLT, 1/2" S.S. WASHER, AND 1/2" PVC WASHER		32

- NOTES:
- CONCRETE: 5000 psi @ 28 DAYS, 5%-8% ENTRAINED AIR, 4" MAX. SLUMP.
  - REBAR: ASTM A-615 GRD. 60, EPOXY COATED.
  - DUCT ENTRANCES: SINGLE DUCT TERMINATORS TO ACCEPT 6" DIAMETER SCH. 40 PVC CONDUIT. SEE DETAIL THIS SHEET.
  - PLEASE NOTE PULLING IRON DESIGNED AS PER A.C.I. 318 FOR WORKING LOAD CAPACITY OF 28,000 POUNDS APPLIED CONCURRENT TO THE MAJOR AXIS OF THE PULLING IRON.
  - IDENTIFICATION: IMPRESSED INTO CEILING OF VAULT.
  - DESIGN CRITERIA: DESIGNED AND BUILT IN ACCORDANCE WITH ASTM C859 "STANDARD SPECIFICATION FOR UNDERGROUND PRECAST CONCRETE UTILITY STRUCTURES".
  - ALL LOADING AS PER ASTM C857 "MINIMUM STRUCTURAL DESIGN LOADING FOR UNDERGROUND PRECAST CONCRETE UTILITY STRUCTURES" INCLUDING:
    - EARTH COVER: MIN. 2.0', MAX. 5.0'
    - AASHTO HS-20 WHEEL LOAD AND APPLICABLE IMPACT.
    - VERTICAL AND LATERAL SOIL PRESSURES DETERMINED USING A SOIL DENSITY OF 120 PCF.
    - GROUNDWATER AT 3'-0" BELOW GRADE.
  - STRUCTURAL DESIGN PERFORMED USING AASHTO STRENGTH DESIGN METHOD.
  - REINFORCING COVER REQUIREMENTS AS PER ACI 318.
  - SEE SPECIFICATION C30-1900 FOR ROW IDENTIFICATION WITH CONDUIT.

INDEPENDENT PUBLIC UTILITIES DEPARTMENT ELECTRIC DIVISION TYPE G MANHOLE DATE 02-02-03 M30-1170

3, 5 AND 6 INCH PLASTIC TRANSITION CONDUIT COUPLINGS  
PVC TO HDPE  
GALVANIZED STEEL TO HDPE



- NOTES:
- CONTRACTOR SHALL SUPPLY TRANSITION COUPLING TO GO FROM HDPE TO STEEL AND HDPE TO PVC SCHEDULE 40.
  - THE COST OF THIS MATERIAL IS INCLUDED IN UNIT PRICES FOR VAULTS AND HANDHOLES, PLUG CANS, FUSE CANS, SIDE WALK SPLICE BOXES AND CONDUIT.
  - THE CONTRACTOR SHALL SUPPLY ALL TRANSITION COUPLINGS.
  - THE CONTRACTOR SHALL NOT USE TRANSITION COUPLING TO CONNECT HDPE TO HDPE IN THE MAIN LINE. ALL MAINLINE CONNECTIONS SHALL BE BUTT FUSED.
  - CONTRACTOR TO USE ELECTROFUSION PROCESS AT ALL TIMES TO MAKE HDPE TO HDPE CONNECTIONS.
  - CONTRACTOR TO ASSEMBLE, CUT, ALIGN, BEVEL, AND FIT TO CREATE A SMOOTH INSIDE INTERFACE AT CONNECTION POINT.
  - HDPE, PVC AND STEEL CONDUIT HAVE DIFFERENT INSIDE DIAMETER.
  - ENCASE IN CONCRETE FOR 5 FEET.

WF# INFORMATION	
WF# 59481 WASHINGTON ST. 75TH TO OLYMPUS DR. EAST SIDE	JOB 1 EU-73
WF# 59482 75TH WASHINGTON ST. TO OLYMPUS DR. NORTH SIDE	JOB 2 EU-73
WF# 59484 75TH WASHINGTON ST. TO CLYDE DR. SOUTH SIDE	JOB 3 EU-73
WF# 59485 WASHINGTON ST. 75TH TO BAILEY RD. EAST SIDE	JOB 4 EU-73

CITY OF NAPERVILLE/DEPARTMENT OF PUBLIC UTILITIES - ELECTRIC			
CALL J.U.I.E. 48 HRS. PRIOR TO CONSTRUCTION			
PROJECT TITLE 75TH ST. AND WASHINGTON ST. ROAD IMPROVEMENTS	MAP NO.:	CAD FILE: 0056270001.D30.DWG	
PROJECT DESCRIPTION TRENCH SECTION DETAILS	DRAWN BY: JK, PM	PROJECT NO.:	EU12-08-03
DATE 4-01-08	ISSUED	WORK REQUEST NO.:	56270
ENGINEER RPS	APPROVED	SCALE:	NTS
REVISION			SHEET 30 OF 73