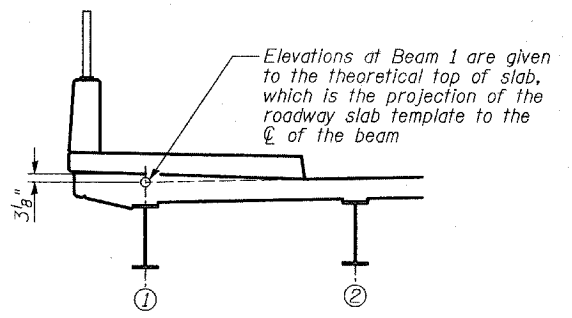
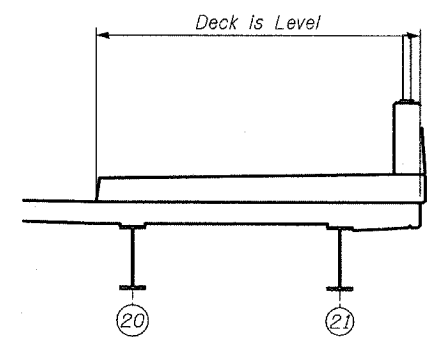


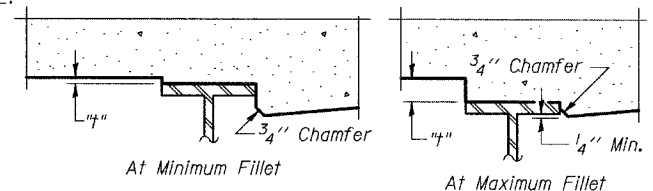
PLAN



DETAIL AT NORTH FASCIA

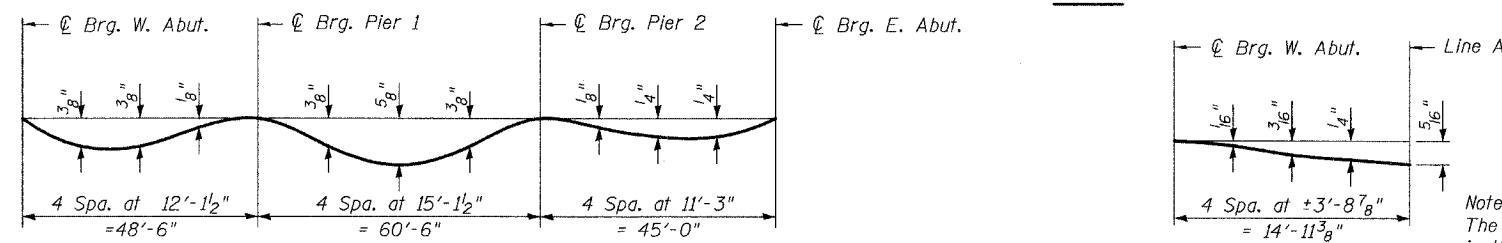


DETAIL AT SOUTH FASCIA



To determine "t": After all structural steel has been erected, elevations of the top flanges of the beams shall be taken at intervals shown below. These elevations subtracted from the "Theoretical Grade Elevations Adjusted for Dead Load Deflection" shown below, minus slab thickness, equals the fillet heights "t" above top flange of beams.

FILLET HEIGHTS



BEAMS 1-21 **DEAD LOAD DEFLECTION DIAGRAMS** **BEAM 22**
(Includes weight of concrete only)

Note:
The above deflections are not to be used in the field if the engineer is working from the grade elevations adjusted for dead load deflections.

TYLIN INTERNATIONAL

DESIGNED	- PL
CHECKED	- SP
DRAWN	- PL
CHECKED	- SP

REVISIONS	
NAME	DATE

TOP OF SLAB ELEVATIONS - LAYOUT

75th STREET OVER THE
WEST BRANCH OF THE DUPAGE RIVER
FAP 369
SECTION 00-00114-00-PV STA. 151+38.03
DUPAGE COUNTY
S.N. 022-3118