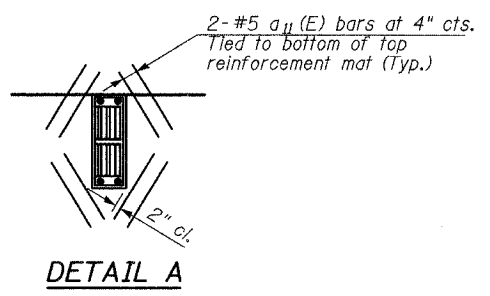


PLAN

*Order a₂(E) bars full length. Cut to fit skew and use remainder of bars in opposite end



DETAIL A

MINIMUM BAR LAPS

Bar	Lap
#5	2'-2"
#6	2'-7"
#7	3'-5"

NOTES:

- See Sheet 18 for Superstructure Details and Bill of Material.
- Bars indicated thus 20x3-#5 etc. indicates 20 lines of bars with 3 lengths per line.
- See Sheet 17 for Parapet Reinforcement.
- Dimensions are based on a Rolled Rail Strip Seal Joint. If the Contractor elects to use the Welded Rail Strip Seal Joint, deck dimensions may require adjustments to satisfy the details on Sheet 20.
- Cut longitudinal bars to clear drainage scuppers.
- Cut longitudinal b(E) bars in median at aluminum sheet locations.
- For Section A-A, see Sheet 16.

REVISIONS	
NAME	DATE

DECK PLAN - SOUTH HALF

75th STREET OVER THE
WEST BRANCH OF THE DUPAGE RIVER
FAP 369
SECTION 00-00114-00-PV STA. 151+38.03
DUPAGE COUNTY
S.N. 022-3118

TYLIN INTERNATIONAL

DESIGNED	- PL
CHECKED	- SP
DRAWN	- PL
CHECKED	- SP