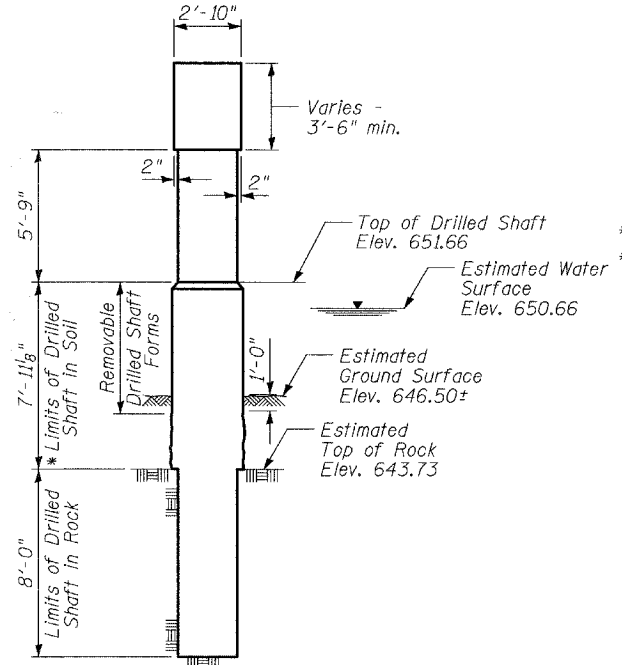
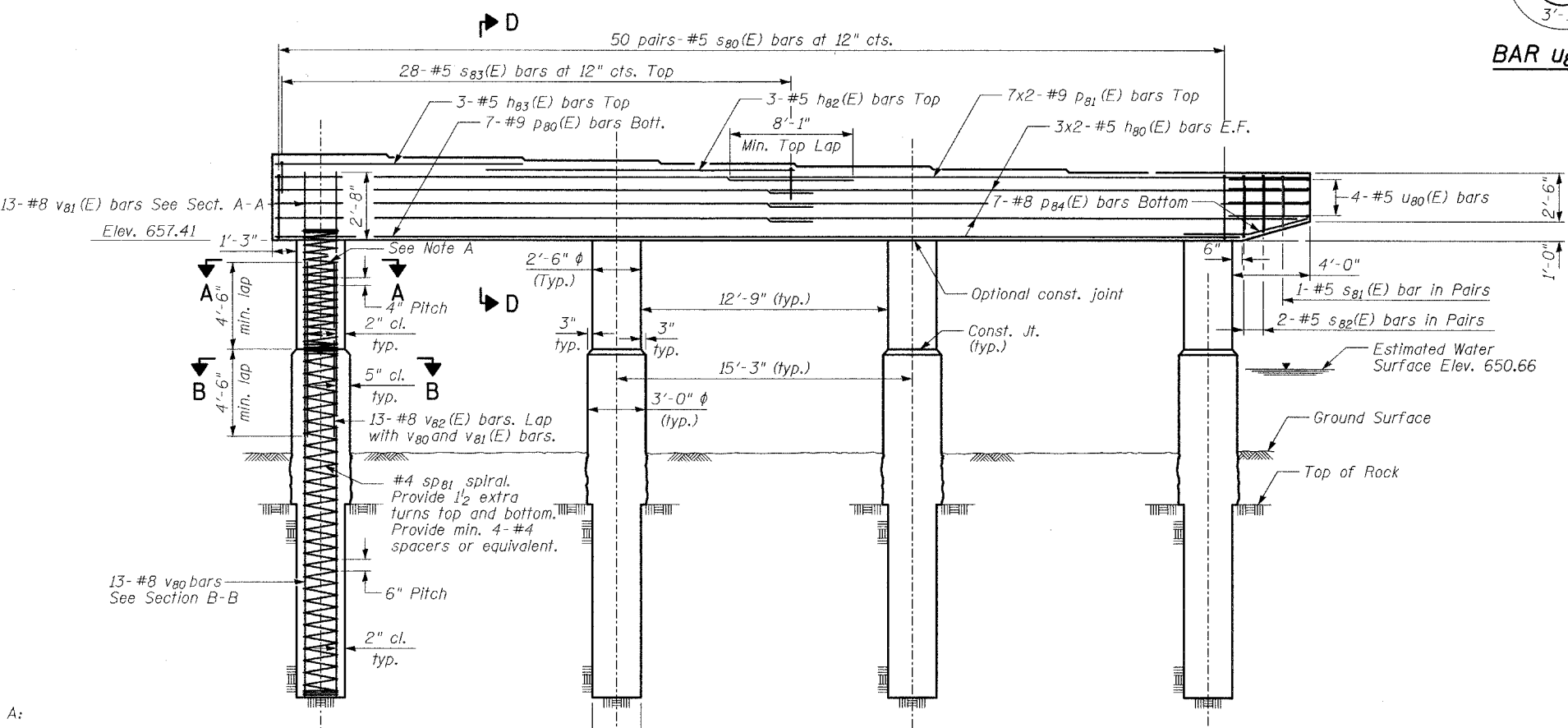
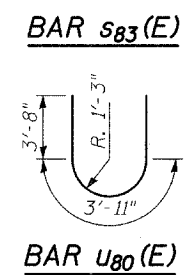
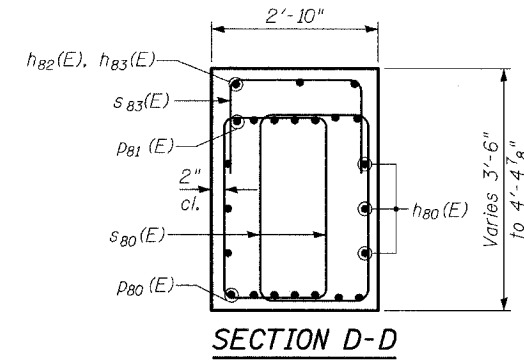


BAR p84(E) & p85(E)

BILL OF MATERIAL

Bar	No.	Size	Length	Shape
h80(E)	12	#5	27'-9"	—
h81(E)	18	#5	31'-3"	—
h82(E)	3	#5	16'-0"	—
h83(E)	3	#5	12'-8"	—
h84(E)	3	#5	23'-3"	—
h85(E)	3	#5	48'-9"	—
h86(E)	3	#5	21'-3"	—
p80(E)	7	#9	49'-8"	—
p81(E)	14	#9	30'-0"	—
p82(E)	14	#9	48'-1"	—
p83(E)	14	#9	44'-3"	—
p84(E)	7	#8	7'-10"	—
p85(E)	7	#8	11'-8"	—
s80(E)	266	#5	10'-11"	□
s81(E)	4	#5	7'-2"	□
s82(E)	12	#5	8'-0"	□
s83(E)	99	#5	5'-6"	□
sp80(E)	10	#4	5'-9"	⋈
sp81	10	#4	15'-11"	⋈
u80(E)	8	#5	11'-3"	C
v80	130	#8	15'-11"	—
v81(E)	130	#8	8'-5"	—
v82(E)	130	#8	9'-0"	—
Concrete Structures		Cu Yd	75.1	
Reinforcement Bars		Pound	7,140	
Reinforcement Bars, Epoxy Coated		Pound	19,540	
Drilled Shaft in Soil		Cu Yd	20.8	
Drilled Shaft in Rock		Cu Yd	14.6	



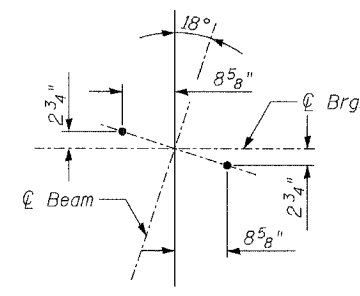
MINIMUM BAR LAPS

Bar	Lap
#5	2'-2"
#9	5'-9"

Typical unless noted otherwise

NOTES

- Cast Steps monolithically with cap.
- Space reinforcement in pier to miss anchor bolts.
- All edges shall have standard 3/4" chamfers.
- Bars indicated thus: 7x2-#5 etc. indicates 7 lines of bars with 2 lengths per line.



ANCHOR BOLT LAYOUT

SEAT ELEVATIONS

BEAM #	14	15	16	17	18	19	20	21
ELEVATION	661.82	661.66	661.51	661.36	661.21	661.06	660.91	660.91
STEP HT.	1 7/8"	1 3/4"	1 3/4"	1 3/4"	1 3/4"	1 3/4"	1 3/4"	0"

* If the prevailing water surface elevation during construction is consistently different than estimated on the plans, the contractor may propose an adjustment to the top of the drilled shaft elevation as part of their installation procedure. The top of all drilled shafts within a substructure unit shall be constructed to the same elevation and extend above the prevailing water surface. The quantities and reinforcement detailing are based on the top of shaft and the estimated elevations shown and may change based on the actual elevations encountered at each shaft and the final top of shaft elevation.

Note A:
 #4 sp80(E) spiral Each Column. Provide 1/2 extra turns top and bottom. Extend spiral 2" into pier cap. Provide min. 4-#4 spacers or equivalent.

LEGEND

E.F. Indicates Each Face

REVISIONS	
NAME	DATE

PIER 1 - SOUTH HALF

75th STREET OVER THE WEST BRANCH OF THE DUPAGE RIVER
 FAP 369
 SECTION 00-00114-00-PV STA. 151+38.03
 DUPAGE COUNTY
 S.N. 022-3118

TYLIN INTERNATIONAL

DESIGNED	- PL
CHECKED	- SP
DRAWN	- PL
CHECKED	- SP