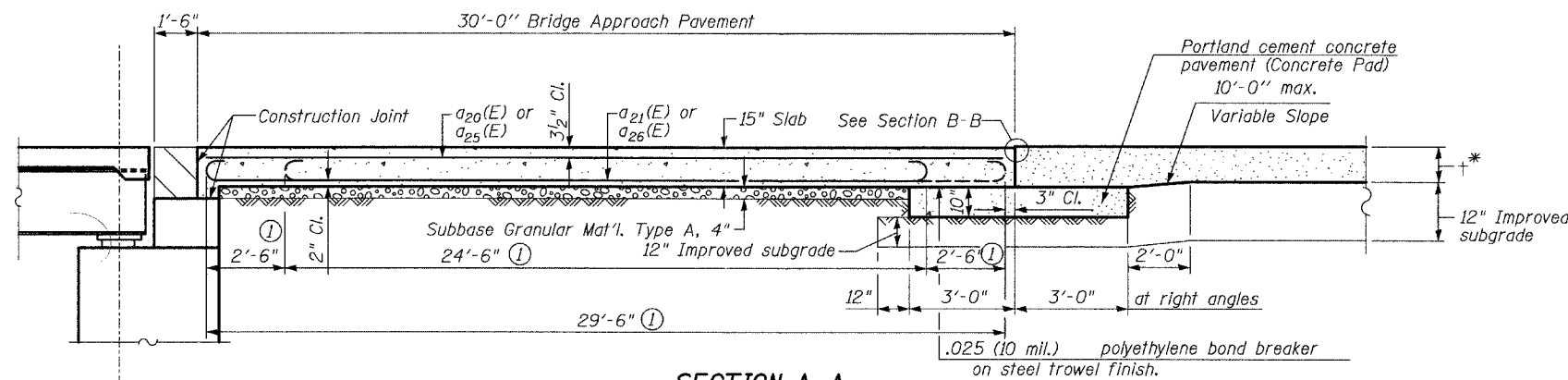


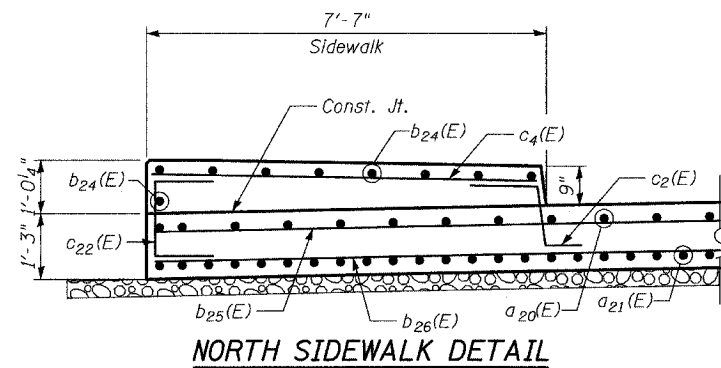
BILL OF MATERIAL

Bar No.	Size	Length	Shape
a ₂₀ (E)	#4	29'-6"	—
a ₂₁ (E)	#9	29'-6"	—
a ₂₂ (E)	#4	5'-8"	—
a ₂₃ (E)	#4	6'-8"	—
a ₂₅ (E)	#5	28'-0"	—
a ₂₆ (E)	#9	28'-0"	—
a ₂₇ (E)	#9	28'-0"	—
a ₂₈ (E)	#9	29'-6"	—
a ₂₉ (E)	#5	18'-3"	—
a ₃₀ (E)	#5	8'-6"	—
b ₂₄ (E)	#5	29'-8"	—
b ₂₅ (E)	#4	31'-10"	—
b ₂₆ (E)	#5	32'-0"	—
b ₂₇ (E)	#4	36'-3"	—
b ₂₈ (E)	#5	36'-4"	—
b ₂₉ (E)	#5	24'-4"	—
c ₂ (E)	#5	2'-5"	—
c ₄ (E)	#5	7'-3"	—
c ₂₀ (E)	#5	10'-9"	—
c ₂₁ (E)	#5	7'-2"	—
c ₂₂ (E)	#5	3'-9"	—
h ₂₂ (E)	#5	30'-7"	—
h ₂₃ (E)	#5	29'-3"	—
h ₂₄ (E)	#5	24'-8"	—
h ₂₅ (E)	#5	11'-0"	—
Bridge Approach Pavement (Special)			SQ YD 494
Protective Coat			SQ YD 500
Bar Splicers			EACH 70
** Reinforcement Bars, Epoxy Coated			POUND 52,080

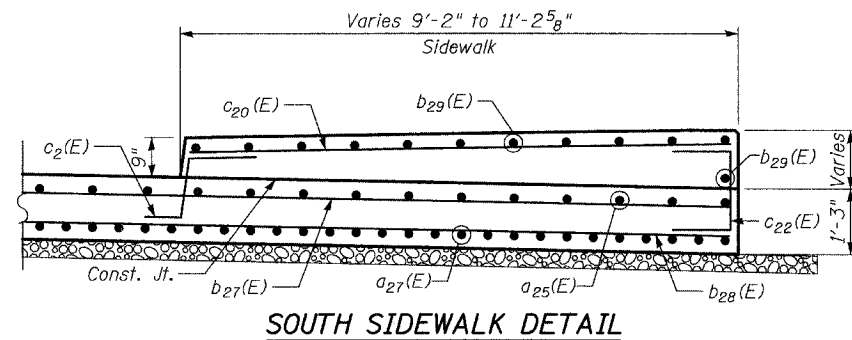
** For Information Only



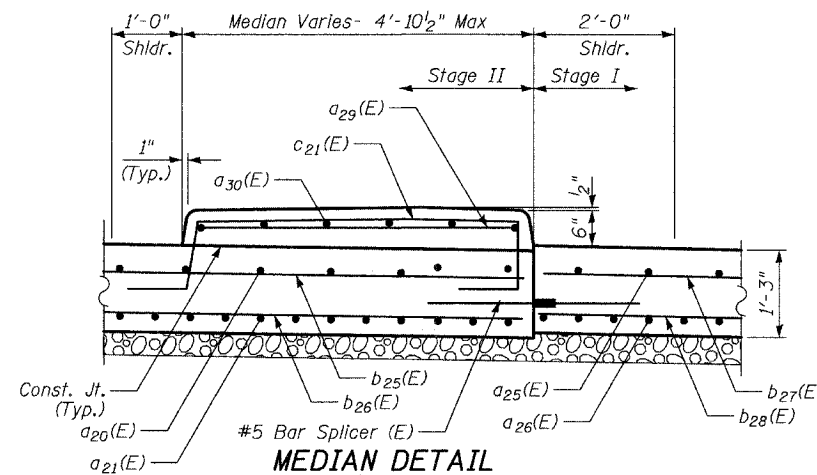
SECTION A-A
 ① Stagger a₂₁(E) and a₂₆(E) bars as shown on plan
 * See Proposed Plan and Profile Sheet for thickness



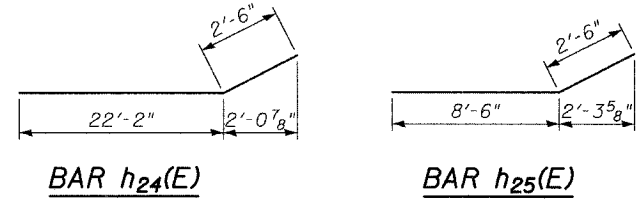
NORTH SIDEWALK DETAIL



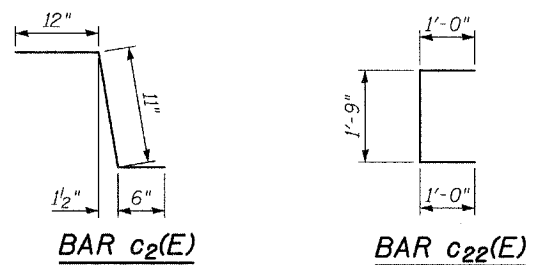
SOUTH SIDEWALK DETAIL



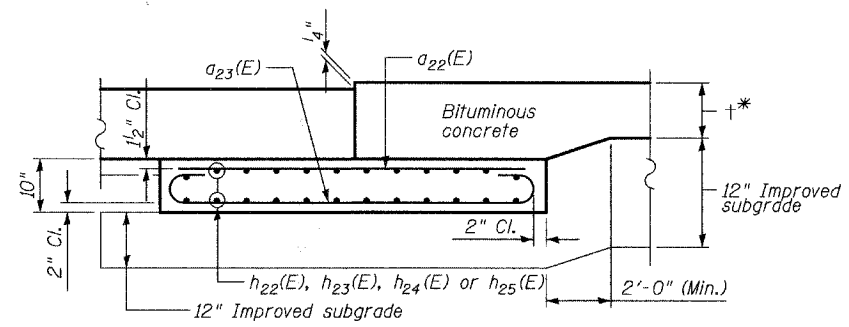
MEDIAN DETAIL



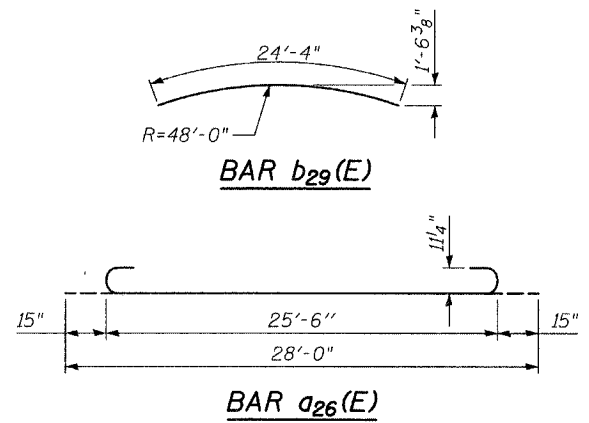
BAR h₂₄(E) **BAR h₂₅(E)**



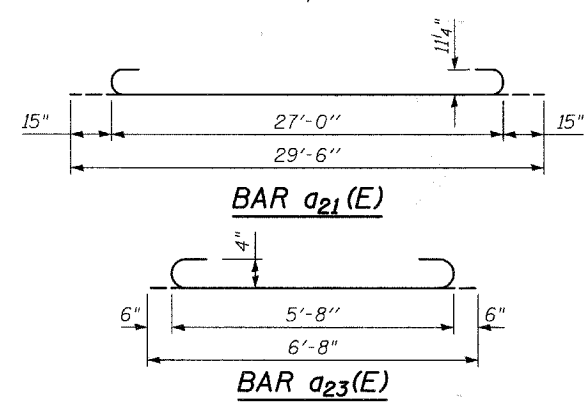
BAR c₂(E) **BAR c₂₂(E)**



SECTION B-B - FLEXIBLE PAVEMENT
 (Showing reinforcement)
 * See Proposed Plan and Profile Sheet for thickness



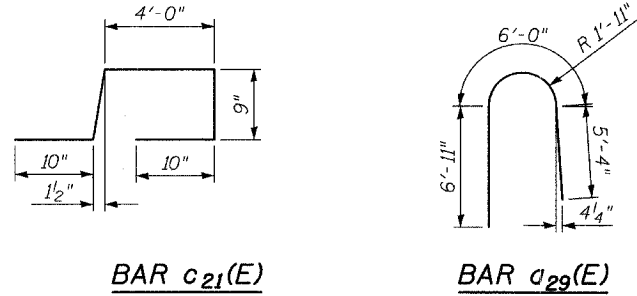
BAR b₂₉(E) **BAR a₂₆(E)**



BAR a₂₁(E) **BAR a₂₃(E)**

TYLIN INTERNATIONAL

DESIGNED	- DE
CHECKED	- SP
DRAWN	- DE
CHECKED	- SP



BAR c₂₁(E) **BAR a₂₉(E)**

REVISIONS	
NAME	DATE

WEST APPROACH PAVEMENT DETAILS

75th STREET OVER THE
 WEST BRANCH OF THE DUPAGE RIVER
 FAP 369
 SECTION 00-00114-00-PV STA. 151+38.03
 DUPAGE COUNTY
 S.N. 022-3118