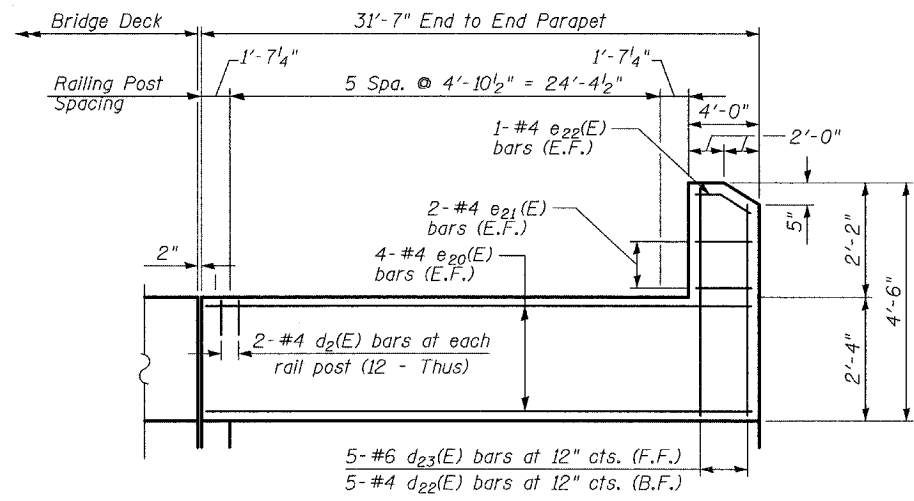
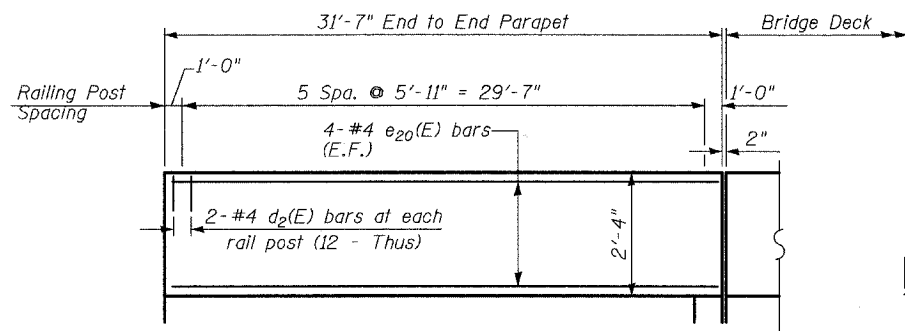


**SECTION A-A**

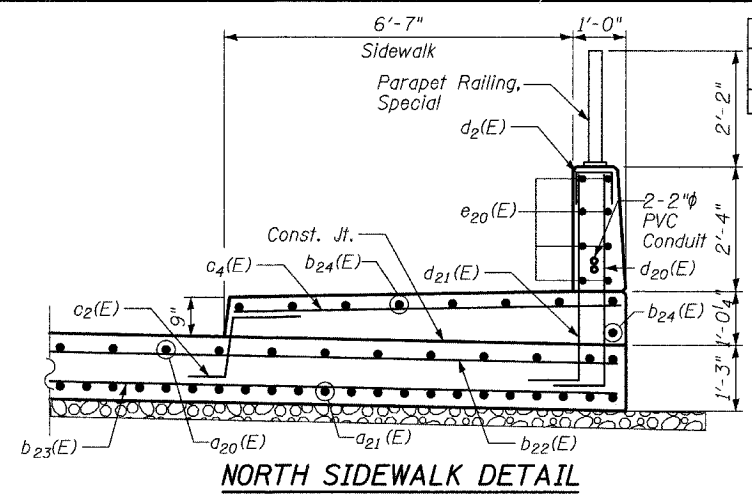
① Stagger  $a_{21}(E)$  bars as shown on plan  
\* See Proposed Plan and Profile Sheet for thickness



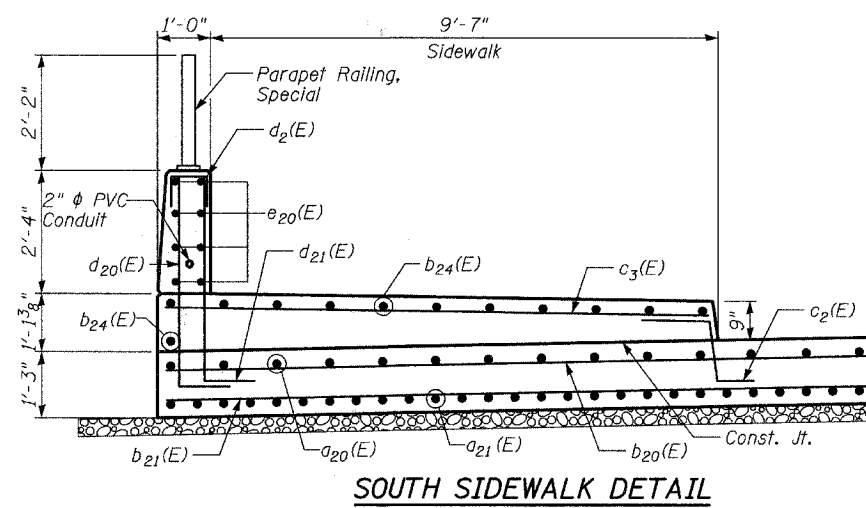
**INSIDE ELEVATION OF NORTH BARRIER**  
(Looking North)



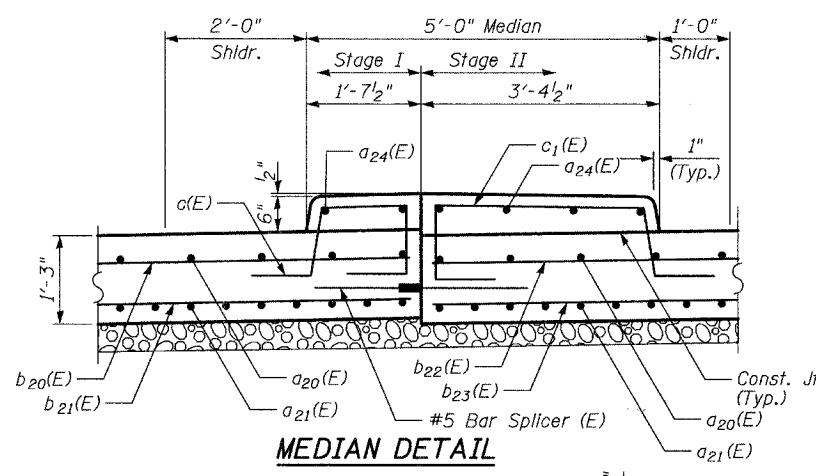
**INSIDE ELEVATION OF SOUTH BARRIER**  
(Looking South)



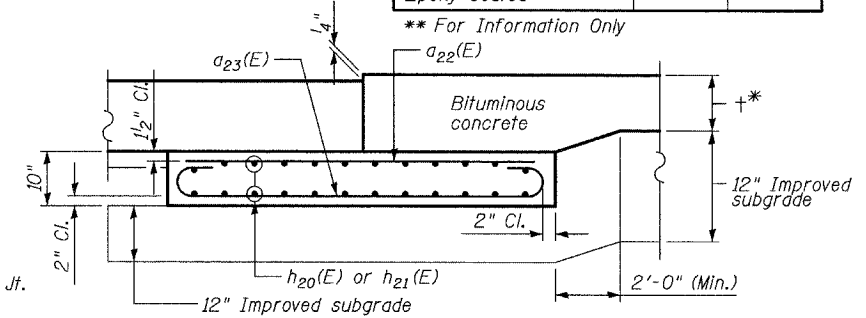
**NORTH SIDEWALK DETAIL**



**SOUTH SIDEWALK DETAIL**



**MEDIAN DETAIL**



**SECTION B-B - FLEXIBLE PAVEMENT**  
(Showing reinforcement)

\* See Proposed Plan and Profile Sheet for thickness

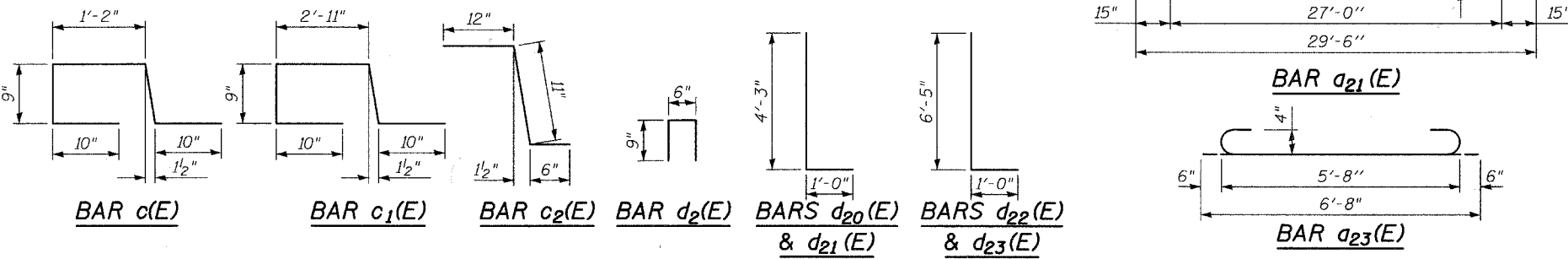
**BILL OF MATERIAL**

Bar	No.	Size	Length	Shape
$a_{20}(E)$	140	#5	29'-6"	—
$a_{21}(E)$	277	#9	29'-6"	U
$a_{22}(E)$	151	#4	5'-8"	—
$a_{23}(E)$	151	#4	6'-8"	U
$a_{24}(E)$	6	#5	29'-8"	—
$b_{20}(E)$	16	#5	28'-3"	—
$b_{21}(E)$	58	#5	28'-5"	—
$b_{22}(E)$	24	#5	31'-4"	—
$b_{23}(E)$	87	#6	31'-6"	—
$b_{24}(E)$	21	#5	29'-8"	—
$c(E)$	31	#5	4'-4"	U
$c_1(E)$	31	#5	6'-1"	U
$c_2(E)$	62	#5	2'-5"	—
$c_3(E)$	31	#5	10'-3"	—
$c_4(E)$	31	#5	7'-3"	—
$d_2(E)$	24	#4	2'-0"	U
$d_{20}(E)$	58	#4	5'-3"	U
$d_{21}(E)$	58	#6	5'-3"	U
$d_{22}(E)$	5	#4	7'-5"	—
$d_{23}(E)$	5	#6	7'-5"	—
$e_{20}(E)$	16	#4	31'-3"	—
$e_{21}(E)$	4	#4	3'-8"	—
$e_{22}(E)$	2	#4	3'-7"	—
$h_{20}(E)$	48	#5	28'-6"	—
$h_{21}(E)$	72	#5	31'-7"	—
Bridge Approach Pavement (Special)		SQ YD	461	
Protective Coat		SQ YD	503	
Bar Splicers		EACH	70	
Reinforcement Bars, Epoxy Coated		POUND	47,250	

\*\* For Information Only

**TYLIN INTERNATIONAL**

DESIGNED	- DE
CHECKED	- SP
DRAWN	- DE
CHECKED	- SP



REVISIONS	
NAME	DATE

**EAST APPROACH PAVEMENT DETAILS**

75th STREET OVER THE WEST BRANCH OF THE DUPAGE RIVER  
FAP 369  
SECTION 00-00114-00-PV STA. 151+38.03  
DUPAGE COUNTY  
S.N. 022-3118