

NOTES

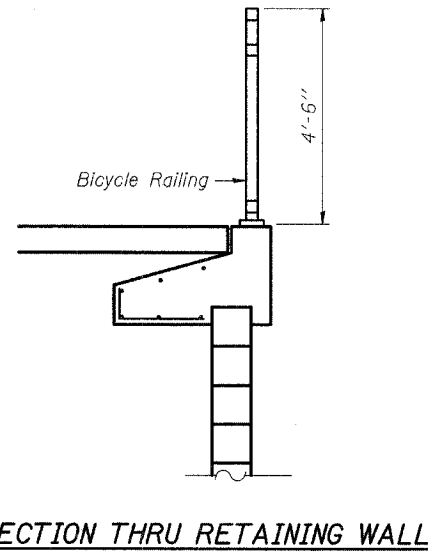
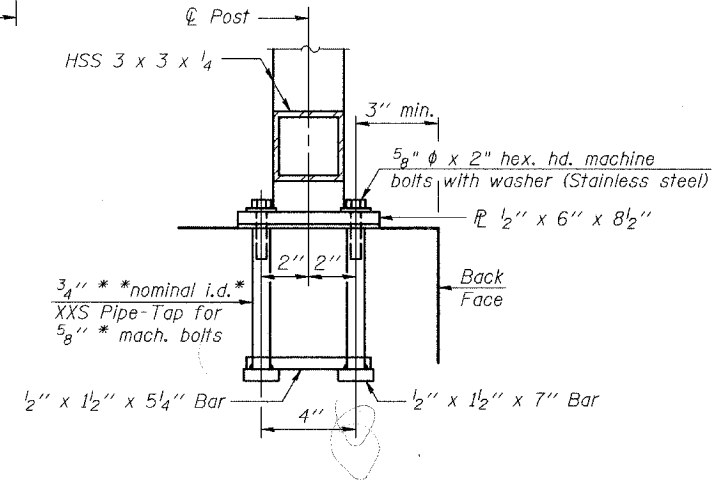
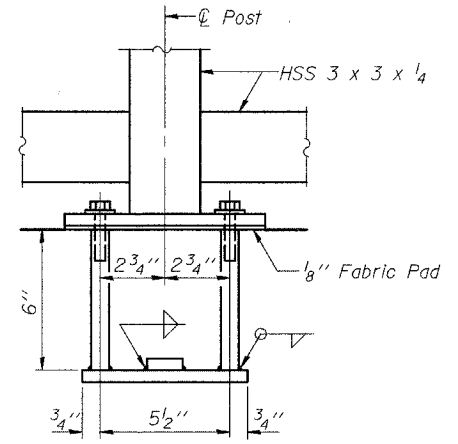
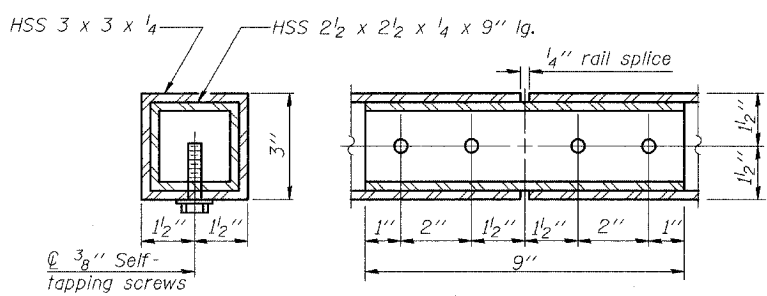
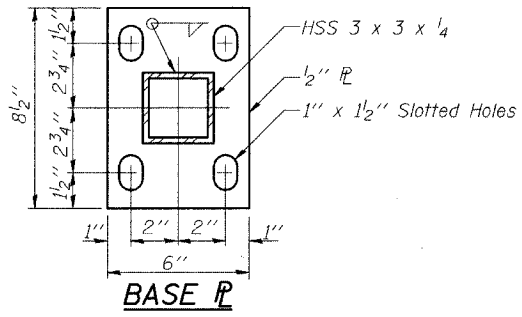
The bicycle railing and parapet railing shall be powder coated and the color shall be brown.

The exterior steel surface shall be blast cleaned to Steel Structures Painting Council Surface Preparation Specification No. 6 (SSPC-SP6) requirements using cast steel abrasives conforming to the Society of Automotive Engineers (SAE) recommended Practice J827. The blast method used is a recirculating, closed cycle centrifugal wheel system with abrasive conforming to SAE Shot Number S280.

All exterior surfaces shall be coated with a Urethane or Triglycidyl Isocyanurate (TGIC) Polyester Powder to a minimum film thickness of 0.002". The coating shall be electrostatically applied and cured in a gas fired convection oven by heating the steel substrate to a minimum of 350 degrees Fahrenheit and a maximum of 400 degrees Fahrenheit. The thermosetting powder resin shall provide both intercoat as well as substrate fusion adhesion that meets 5A or 5B classifications of ASTM D3359.

Ship railing to the site in a manner to prevent damage to the powder coating.

The chain link fabric shall conform to the requirements of Article 1006.27(a)(1)(d) of the Standard Specifications, and shall be vinyl coated to match the brown powder coating of the bicycle railing.



BILL OF MATERIAL

Item	Unit	Quantity
Bicycle Railing	Foot	80.8

REVISIONS	
NAME	DATE

HOBSON ROAD RETAINING WALL RAILING DETAILS

WASHINGTON - 75TH STREET
F.A.U. ROUTE 2552
SECTION 00-00114-00-PV
DUPAGE COUNTY

TYLIN INTERNATIONAL

DESIGNED	- TB
CHECKED	- SP
DRAWN	- TB
CHECKED	- SP

In lieu of the cast-in-place anchor device shown, the Contractor has the option of drilling and setting 5/8" phi anchor rods according to Article 509.06 of the Standard Specifications. Embedment shall be according to the manufacturer's specifications.