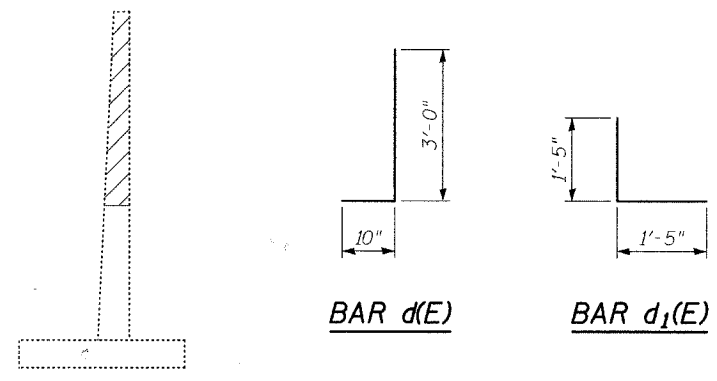


ELEVATION OF EXISTING RETAINING WALL
(Looking West)



SECTION A-A

BILL OF MATERIAL

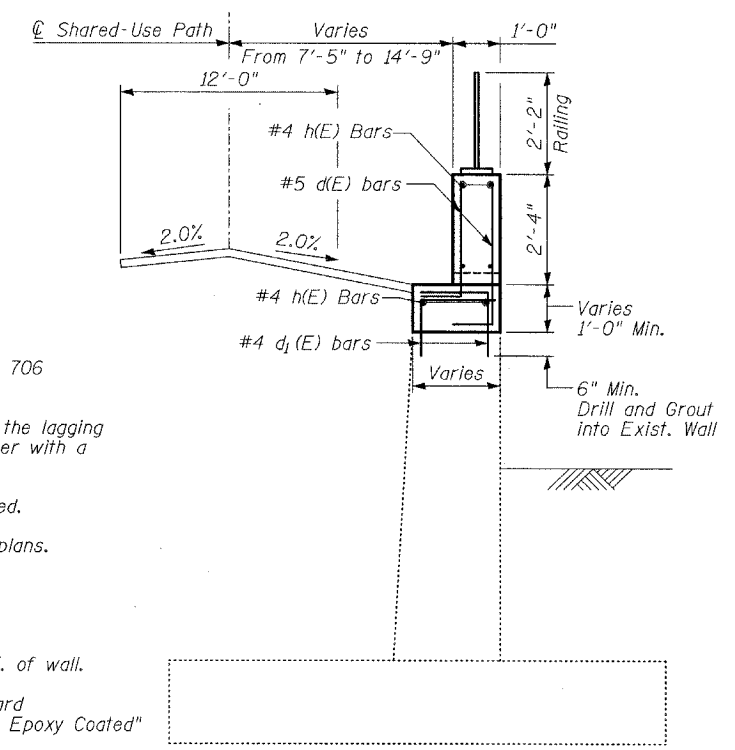
Bar	No.	Size	Length	Shape
d(E)	150	#5	3'-10"	
d1(E)	150	#4	2'-10"	
h(E)	30	#4	23'-11"	
Reinforcement Bars, Epoxy Coated		LB		1,370
Concrete Structures		CU YD		12
Concrete Removal		CU YD		49
Parapet Railing, Special		FT		73

LEGEND

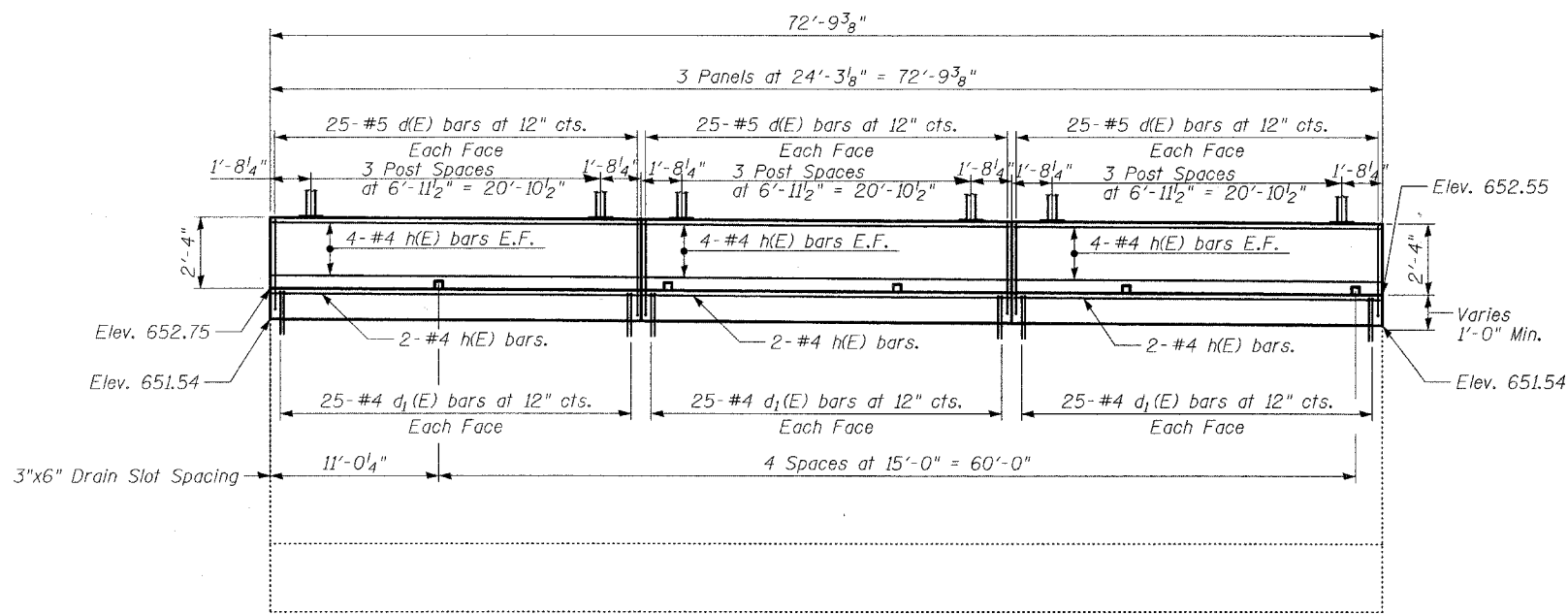
Denotes Limits of concrete removal

NOTES

1. Reinforcement bars shall conform to the requirements of ASTM A 706 Gr. 60 (IL Modified). See Special Provisions.
2. The Contractor is responsible for the design and performance of the lagging using no less than a 3 in. nominal rough-sawn thickness and timber with a minimum allowable bending stress of 1000 psi.
3. All exposed concrete edges shall be chamfered 3/4" except as noted.
4. Protective Coat shall be applied to the barriers as shown on the plans.
5. All construction joints shall be bonded.
6. Reinforcement Bars designated (E) shall be Epoxy Coated.
7. Offsets are measured from the Washington St. NB baseline to F.F. of wall.
8. Drill and epoxy grout bars according to Article 584 of the Standard Specifications. The cost shall be included in "Reinforcement Bars, Epoxy Coated"
9. For details of railing, see Bridge Plans.



TYPICAL SECTION



ELEVATION - BARRIER WALL NORTH OF WEST ABUTMENT

TYLIN INTERNATIONAL

DESIGNED	-
CHECKED	- SP
DRAWN	-
CHECKED	- SP

REVISIONS	
NAME	DATE

REMOVAL AND RECONSTRUCTION OF EXIST. RETAINING WALL SOPUTH OF 75TH STREET BRIDGE

WASHINGTON - 75TH STREET
F.A.U. ROUTE 2552
SECTION 00-00114-00-PV
DUPAGE COUNTY