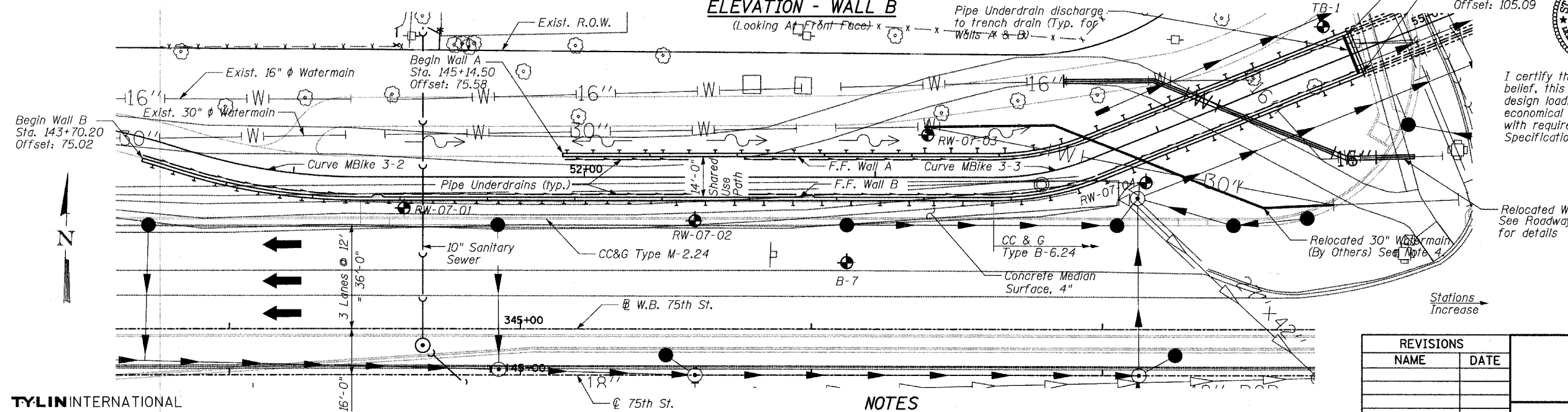
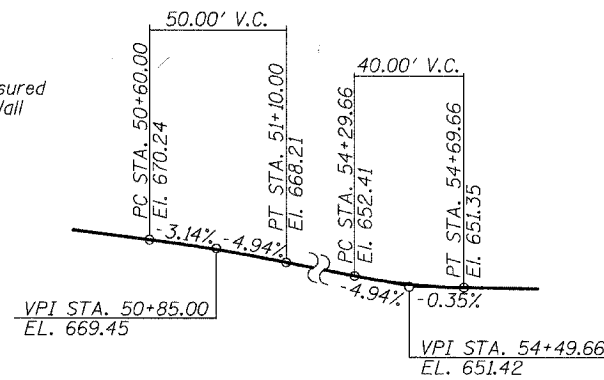
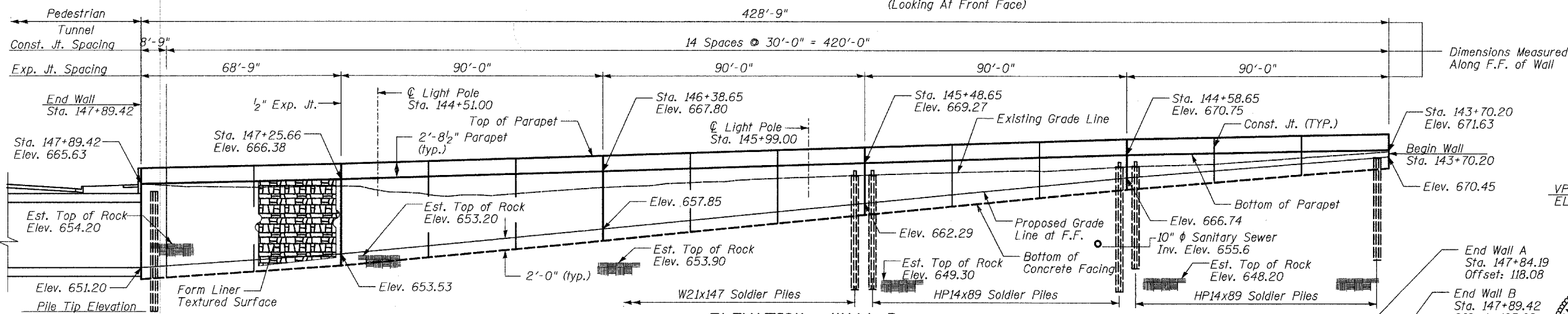
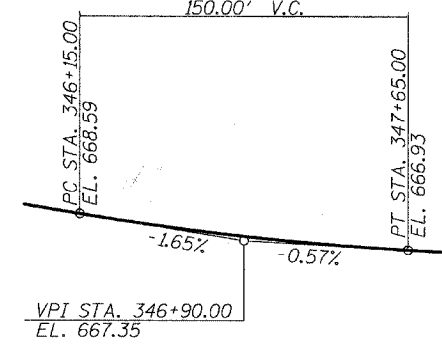
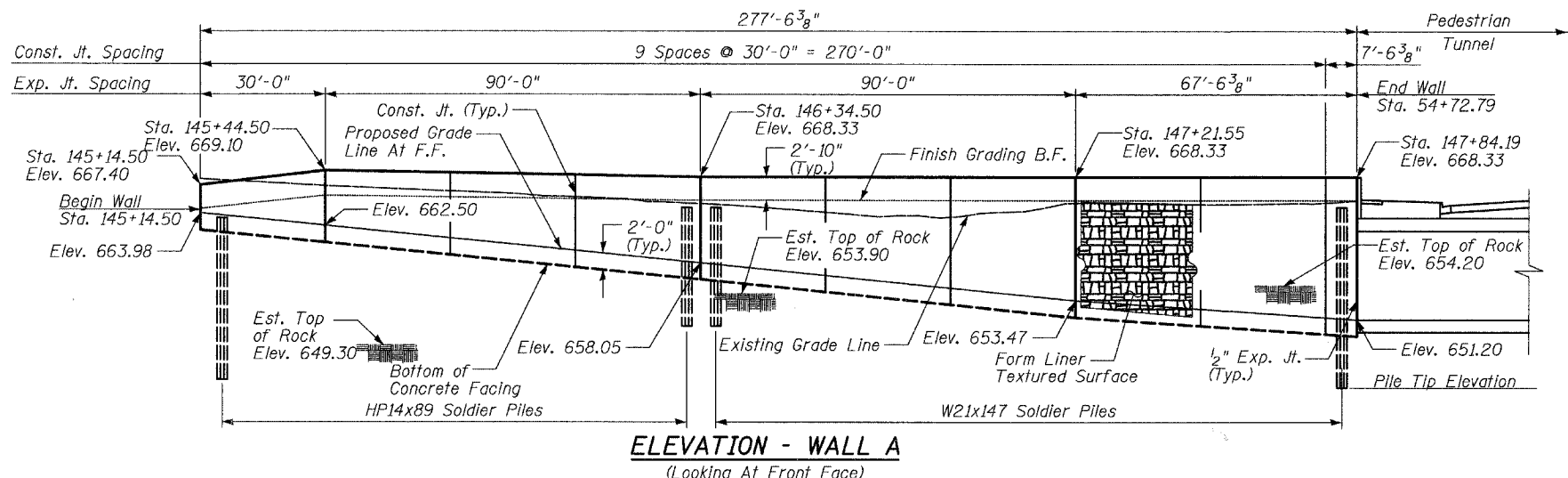


Benchmark: Found Dupage County disk in southwest wingwall of 75th Street bridge over West Branch of the Dupage River. Elev. 664.19
 Existing structure: None.

Prop. Curve MBIKE3-2
 PI Sta. 50+91.40
 $\Delta = 18^\circ 18' 46''$ (LT)
 $D = 28^\circ 38' 52''$
 $T = 32.24'$
 $R = 200.00'$
 $L = 63.92'$
 $E = 2.58'$
 PC Sta. 50+59.17
 PT Sta. 51+23.09

Prop. Curve MBIKE3-3
 PI Sta. 53+58.18
 $\Delta = 21^\circ 57' 04''$ (LT)
 $D = 63^\circ 39' 43''$
 $T = 17.45'$
 $R = 90.00'$
 $L = 34.48'$
 $E = 1.68'$
 PC Sta. 53+40.72
 PT Sta. 53+75.21

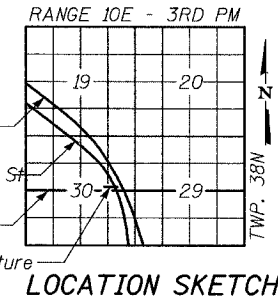
F.A.U. ROUTE NO.	SECTION	COUNTY	SHEET NO.	SHEET NO.
2552	*	DUPAGE	563	380
FED. ROAD DIST. NO.	ILLINOIS	FED. AID PROJ. NO.	CONTRACT NO. 63024	
			150.00' V.C.	



SPIROS PANTAZIS
 CHICAGO, ILLINOIS
 PROFESSIONAL ENGINEER

Signed: Spiros Pantazis, S.E., Ill. Lic. No. 081-006448 Expires 11-30-2008.
 Date: 4/1/08

I certify that to the best of my knowledge, information and belief, this bridge design is structurally adequate for the design loading shown on the plans. The design is an economical one for the style of structure and complies with requirements of the current "AASHTO Standard Specifications of Highway Bridges".



TYLIN INTERNATIONAL

DESIGNED	- PL
CHECKED	- SP
DRAWN	- PL
CHECKED	- SP

DESIGN SPECIFICATIONS
 2002 AASHTO

DESIGN STRESSES

FIELD UNITS:
 $f'_c = 3,500$ psi
 $f_y = 60,000$ psi (reinf.)
 $f_y = 36,000$ psi (AASHTO M270 Grade 36)

NOTES

- Offsets are measured from the ϕ 75th Street to the front face of wall.
- F.F. - Front Face
- B.F. - Back Face
- The 30" ϕ Watermain is to be relocated/lowered by DuPage County. The soldier pile spacing has been placed based on the anticipated relocated alignment as shown on the plans. The Contractor shall verify the watermain alignment and adjust the pile spacing if necessary. The pile spacing as shown on the plans shall not be exceeded without the approval of the Engineer.

REVISIONS

NAME	DATE

WALLS A AND B GENERAL PLAN

WASHINGTON - 75TH STREET
 F.A.U. ROUTE 2552
 SECTION 00-00114-00-PV
 DUPAGE COUNTY