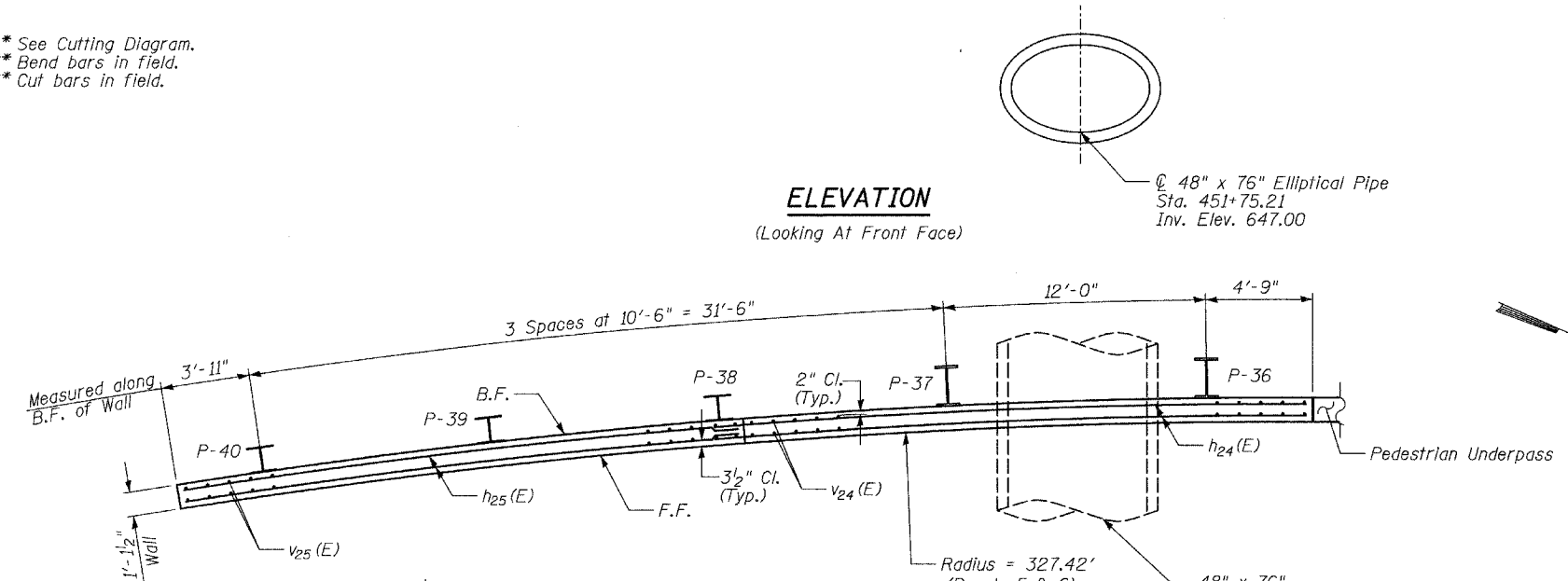
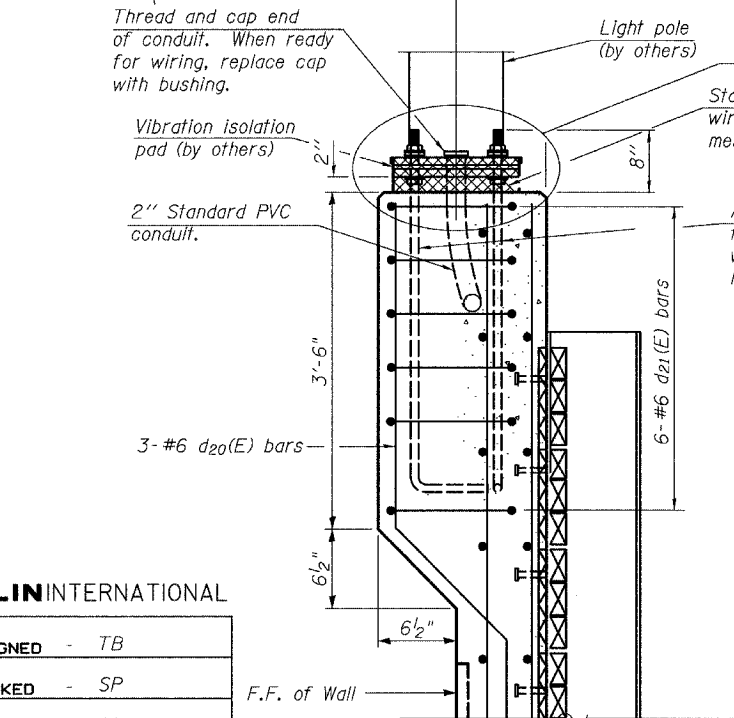


* See Cutting Diagram.
** Bend bars in field.
*** Cut bars in field.

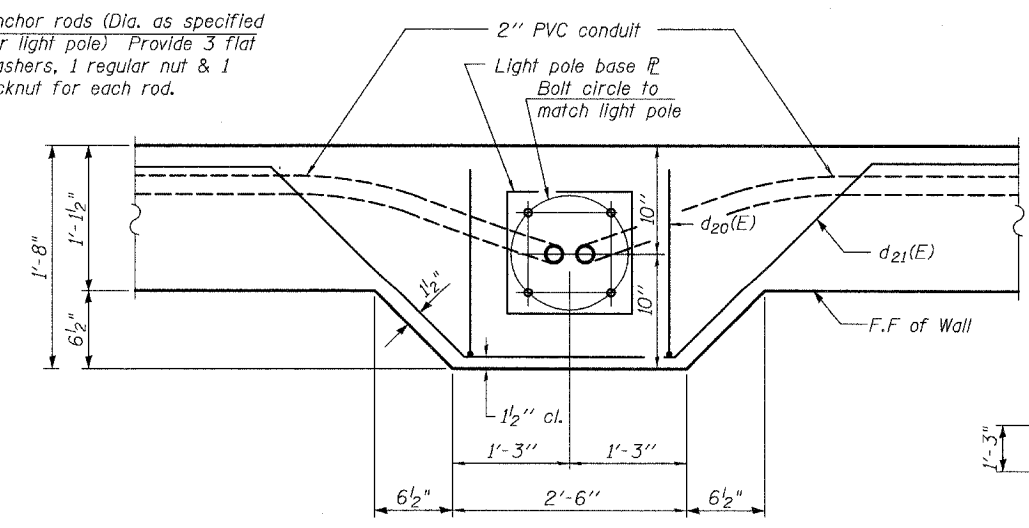
ELEVATION
(Looking At Front Face)



PLAN



SECTION

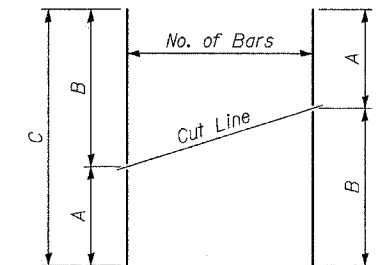


LIGHT POLE DETAILS

PLAN Note: Cost of anchor rods is included with Concrete Structures.

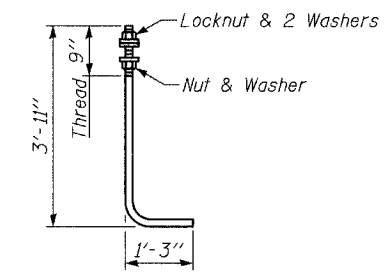
BAR TABLE SCHEDULE

Bar	No. of Sets Req'd	No. of Bars Per Set	A	B	C
v20(E)	1	22	2'-9"	9'-3"	12'-0"
v21(E)	1	22	9'-3"	10'-0"	19'-3"
v22(E)	1	29	10'-0"	8'-6"	18'-6"
v23(E)	1	29	8'-6"	6'-10"	15'-4"
v24(E)	1	27	5'-11"	4'-6"	10'-5"
v25(E)	1	27	4'-6"	1'-9"	6'-3"



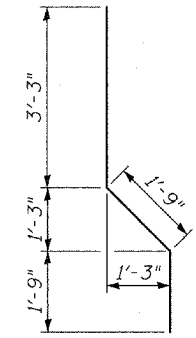
SERIES OF BAR CUTTING DIAGRAM

See table for dimensions.
Make all cuts normal to bar axis

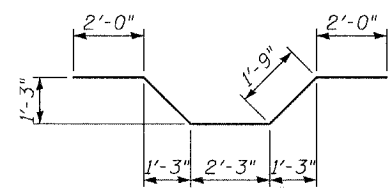


ANCHOR ROD

Diameter as specified for light poles.
(ASTM F 1554 Grade 105)



BAR d20(E)



BAR d21(E)

WALL D
BILL OF MATERIAL

Bar	No.	Size	Length	Shape
d20(E)	3	#6	6'-9"	
d21(E)	6	#6	10'-0"	
h20(E)	22	#5	23'-6"	
h21(E)	22	#5	20'-11"	
h22(E)	20	#5	30'-3"	
h23(E)	20	#5	27'-3"	
h24(E)	14	#5	28'-3"	
h25(E)	12	#5	25'-9"	
v20(E)	22	#4	12'-0"	
v21(E)	22	#4	19'-3"	
v22(E)	29	#4	18'-6"	
v23(E)	29	#4	15'-4"	
v24(E)	27	#4	10'-5"	
v25(E)	27	#4	6'-3"	
Structure Excavation		CU YD	115	
Rock Excavation for Structures		CU YD	5	
Concrete Structures		CU YD	45	
Protective Coat		SQ YD	28	
Form Liner Textured Surface		SQ YD	96	
Stud Shear Connectors		EACH	156	
Untreated Timber Lagging		SQ FT	818	
Reinforcement Bars, Epoxy Coated		LB	4,490	
Furnishing Soldier Piles (HP Section)		FT	36	
Furnishing Soldier Piles (W Section)		FT	294	
Geocomposite Wall Drain		SQ YD	91	
Pipe Underdrains for Structures, 4"		FT	182	
Drilling and Setting Soldier Piles (in Soil)		CU FT	1,158	
Drilling and Setting Soldier Piles (in Rock)		CU FT	558	
Bicycle Railing, Special		FT	151	
Anti-Graffiti Coating		SQ FT	864	

NOTES:

- B.F. denotes Back Face.
- E.F. denotes Each Face.
- F.F. denotes Front Face.
- Work this sheet with Sheets 6 of 13.
- Pile spacing measured along back face of wall.
- Offsets are measured from the NB Washington St. to the front face of wall.
- See Sheet 8 of 13 for limits of architectural finish.
- See Sheet 11 of 13 for railing details.

LAP SPLICES

Bar	Lap
#5	2'-2"

REVISIONS	
NAME	DATE

WALL D
PLAN & ELEVATION
STA. 452+64.44 TO STA. 453+16.25

WASHINGTON - 75TH STREET
F.A.U. ROUTE 2552
SECTION 00-00114-00-PV
DUPAGE COUNTY

TYLIN INTERNATIONAL

DESIGNED	- TB
CHECKED	- SP
DRAWN	- TB
CHECKED	- SP