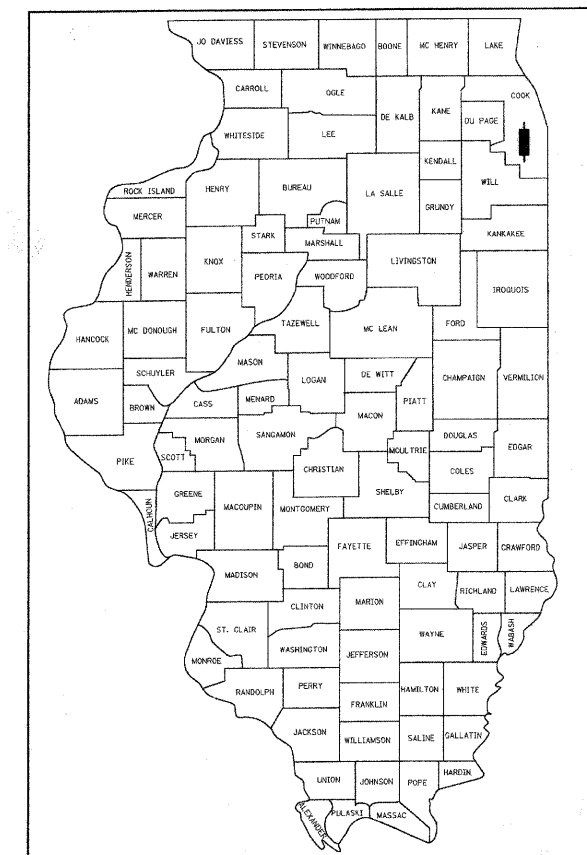


F.A.P. RTE.	SECTION	COUNTY	TOTAL SHEETS	SHEET NO.
06-00169-00-TL	COOK	53	1	
FED. ROAD DIST. NO. 1 ILLINOIS FED. AID PROJECT				

STATE OF ILLINOIS
DEPARTMENT OF TRANSPORTATION
DIVISION OF HIGHWAYS
PLANS FOR PROPOSED
VILLAGE OF OAK LAWN
EMERGENCY VEHICLE
PREEMPTION PROJECT
DISTRICT 1
VARIOUS SIGNAL LOCATIONS
FEDERAL PROJECT NO.: HPP-2401 (003)
SECTION 06-00169-00-TL
COOK COUNTY
JOB NO: C-91-187-06



LOCATION OF SECTION INDICATED THIS: - [highlighted area]

ILLINOIS DEPARTMENT OF TRANSPORTATION

APPROVED: *[Signature]* 20 08
Oak Lawn Village Engineer
 LOCAL AGENCY POSITION

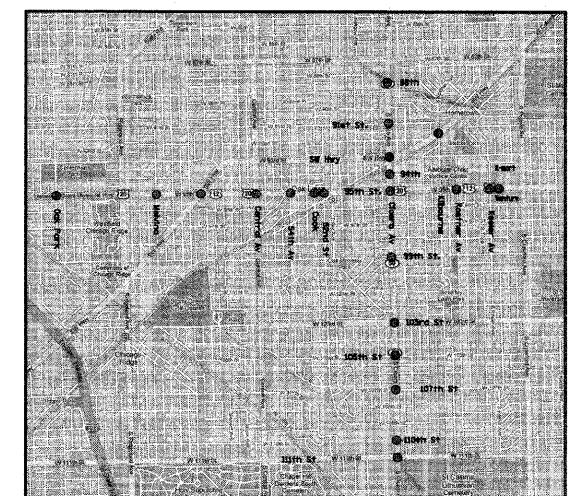
PASSED: *[Signature]* 20 08
Christopher H. Co
 DISTRICT ONE ENGINEER OF LOCAL ROADS & STREETS

RELEASING FOR BID
 BASED ON LIMITED REVIEW: *[Signature]* 20 08
 DEPUTY DIRECTOR OF HIGHWAYS, REGION ONE ENGINEER

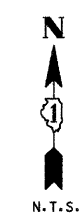
**PRINTED BY THE AUTHORITY
OF THE STATE OF ILLINOIS**

[Signature] 5-6-2008
 ENGINEER DATE

GEORGE M. ZIEGLER
 ILLINOIS REGISTRATION No. 062-045853
 EXPIRATION DATE: 11-30-2009
 PROFESSIONAL DESIGN FIRM No.: 184-001742
 EXPIRATION DATE: 04-30-2009



LOCATION MAP



INDEX OF SHEETS

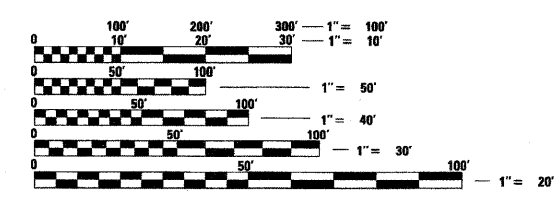
SHEET NO.	DESCRIPTION
1	TITLE SHEET
2	SUMMARY OF QUANTITIES
3	TRAFFIC SIGNAL MODIFICATION U.S. RTE. 1220 (95TH ST.) AND OAK PARK AVE.
4	SCHEDULE OF QUANTITIES, CABLE PLAN, PHASE DESIGNATION DIAGRAM AND EMERGENCY VEHICLE PREEMPTION SEQUENCE U.S. RTE. 1220 (95TH ST.) AND OAK PARK AVE.
5	TRAFFIC SIGNAL MODIFICATION U.S. RTE. 1220 (95TH ST.) AND MELVINA AVE.
6	SCHEDULE OF QUANTITIES, CABLE PLAN, PHASE DESIGNATION DIAGRAM AND EMERGENCY VEHICLE PREEMPTION SEQUENCE U.S. RTE. 1220 (95TH ST.) AND MELVINA AVE.
7	TRAFFIC SIGNAL MODIFICATION U.S. RTE. 1220 (95TH ST.) AND SOUTHWEST HIGHWAY
8	SCHEDULE OF QUANTITIES, CABLE PLAN, PHASE DESIGNATION DIAGRAM AND EMERGENCY VEHICLE PREEMPTION SEQUENCE U.S. RTE. 1220 (95TH ST.) AND SOUTHWEST HIGHWAY
9	TRAFFIC SIGNAL MODIFICATION 95TH STREET AND CENTRAL AVE.
10	SCHEDULE OF QUANTITIES, CABLE PLAN, PHASE DESIGNATION DIAGRAM AND EMERGENCY VEHICLE PREEMPTION SEQUENCE 95TH STREET AND CENTRAL AVE.
11	TRAFFIC SIGNAL MODIFICATION U.S. RTE. 1220 (95TH ST.) AND 54TH AVE.
12	SCHEDULE OF QUANTITIES, CABLE PLAN, PHASE DESIGNATION DIAGRAM AND EMERGENCY VEHICLE PREEMPTION SEQUENCE U.S. RTE. 1220 (95TH ST.) AND 54TH AVE.
13	TRAFFIC SIGNAL MODIFICATION U.S. RTE. 1220 (95TH ST.) AND COOK AVE.
14	SCHEDULE OF QUANTITIES, CABLE PLAN, PHASE DESIGNATION DIAGRAM AND EMERGENCY VEHICLE PREEMPTION SEQUENCE U.S. RTE. 1220 (95TH ST.) AND COOK AVE.
15	TRAFFIC SIGNAL MODIFICATION U.S. RTE. 1220 (95TH ST.) AND 52ND AVE.
16	SCHEDULE OF QUANTITIES, CABLE PLAN, PHASE DESIGNATION DIAGRAM AND EMERGENCY VEHICLE PREEMPTION SEQUENCE U.S. RTE. 1220 (95TH ST.) AND 52ND AVE.
17	TRAFFIC SIGNAL MODIFICATION U.S. RTE. 1220 (95TH ST.) AND IL 50 (CICERO AVE.)
18	SCHEDULE OF QUANTITIES, CABLE PLAN, PHASE DESIGNATION DIAGRAM AND EMERGENCY VEHICLE PREEMPTION SEQUENCE U.S. RTE. 1220 (95TH ST.) AND IL 50 (CICERO AVE.)
19	TRAFFIC SIGNAL MODIFICATION U.S. RTE. 1220 (95TH ST.) AND KOSTNER AVE.
20	SCHEDULE OF QUANTITIES, CABLE PLAN, PHASE DESIGNATION DIAGRAM AND EMERGENCY VEHICLE PREEMPTION SEQUENCE U.S. RTE. 1220 (95TH ST.) AND KOSTNER AVE.
21	TRAFFIC SIGNAL MODIFICATION U.S. RTE. 1220 (95TH ST.) AND KEELER AVE.
22	SCHEDULE OF QUANTITIES, CABLE PLAN, PHASE DESIGNATION DIAGRAM AND EMERGENCY VEHICLE PREEMPTION SEQUENCE U.S. RTE. 1220 (95TH ST.) AND KEELER AVE.
23	TRAFFIC SIGNAL MODIFICATION U.S. RTE. 1220 (95TH ST.) AND K-MART/VENTURE
24	SCHEDULE OF QUANTITIES, CABLE PLAN, PHASE DESIGNATION DIAGRAM AND EMERGENCY VEHICLE PREEMPTION SEQUENCE U.S. RTE. 1220 (95TH ST.) AND K-MART/VENTURE
25	TRAFFIC SIGNAL MODIFICATION IL RTE. 50 (CICERO AVE.) AND 88TH STREET
26	SCHEDULE OF QUANTITIES, CABLE PLAN, PHASE DESIGNATION DIAGRAM AND EMERGENCY VEHICLE PREEMPTION SEQUENCE IL RTE. 50 (CICERO AVE.) AND 88TH STREET
27	TRAFFIC SIGNAL MODIFICATION IL RTE. 50 (CICERO AVE.) AND 91ST STREET
28	SCHEDULE OF QUANTITIES AND CABLE PLAN IL RTE. 50 (CICERO AVE.) AND 91ST STREET
29	TRAFFIC SIGNAL MODIFICATION IL RTE. 50 (CICERO AVE.) AND SOUTHWEST HIGHWAY
30	SCHEDULE OF QUANTITIES AND CABLE PLAN IL RTE. 50 (CICERO AVE.) AND SOUTHWEST HIGHWAY
31	SEQUENCE OF OPERATION, RAILROAD PREEMPTION SEQUENCE OF OPERATION AND EMERGENCY VEHICLE PREEMPTION SEQUENCE IL RTE. 50 (CICERO AVE.) AND SOUTHWEST HIGHWAY
32	TRAFFIC SIGNAL MODIFICATION IL RTE. 50 (CICERO AVE.) AND 94TH STREET
33	SCHEDULE OF QUANTITIES AND CABLE PLAN IL RTE. 50 (CICERO AVE.) AND 94TH STREET
34	SEQUENCE OF OPERATION, RAILROAD PREEMPTION SEQUENCE OF OPERATION AND EMERGENCY VEHICLE PREEMPTION SEQUENCE IL RTE. 50 (CICERO AVE.) AND 94TH STREET
35	TRAFFIC SIGNAL MODIFICATION IL RTE. 50 (CICERO AVE.) AND 99TH STREET
36	SCHEDULE OF QUANTITIES, CABLE PLAN, PHASE DESIGNATION DIAGRAM AND EMERGENCY VEHICLE PREEMPTION SEQUENCE IL RTE. 50 (CICERO AVE.) AND 99TH STREET
37	TRAFFIC SIGNAL MODIFICATION IL RTE. 50 (CICERO AVE.) AND 103RD STREET
38	SCHEDULE OF QUANTITIES, CABLE PLAN, PHASE DESIGNATION DIAGRAM AND EMERGENCY VEHICLE PREEMPTION SEQUENCE IL RTE. 50 (CICERO AVE.) AND 103RD STREET
39	TRAFFIC SIGNAL MODIFICATION IL RTE. 50 (CICERO AVE.) AND 105TH STREET
40	SCHEDULE OF QUANTITIES, CABLE PLAN, PHASE DESIGNATION DIAGRAM AND EMERGENCY VEHICLE PREEMPTION SEQUENCE IL RTE. 50 (CICERO AVE.) AND 105TH STREET
41	TRAFFIC SIGNAL MODIFICATION IL RTE. 50 (CICERO AVE.) AND 107TH STREET
42	SCHEDULE OF QUANTITIES, CABLE PLAN, PHASE DESIGNATION DIAGRAM AND EMERGENCY VEHICLE PREEMPTION SEQUENCE IL RTE. 50 (CICERO AVE.) AND 107TH STREET
43	TRAFFIC SIGNAL MODIFICATION IL RTE. 50 (CICERO AVE.) AND 110TH STREET
44	SCHEDULE OF QUANTITIES, CABLE PLAN, PHASE DESIGNATION DIAGRAM AND EMERGENCY VEHICLE PREEMPTION SEQUENCE IL RTE. 50 (CICERO AVE.) AND 110TH STREET
45	TRAFFIC SIGNAL MODIFICATION IL RTE. 50 (CICERO AVE.) AND 111TH STREET
46	SCHEDULE OF QUANTITIES, CABLE PLAN, PHASE DESIGNATION DIAGRAM AND EMERGENCY VEHICLE PREEMPTION SEQUENCE IL RTE. 50 (CICERO AVE.) AND 111TH STREET
47	TRAFFIC SIGNAL MODIFICATION SOUTHWEST HIGHWAY AND KILBOURN AVE.
48	SCHEDULE OF QUANTITIES AND CABLE PLAN SOUTHWEST HIGHWAY AND KILBOURN AVE.
49	SEQUENCE OF OPERATION, RAILROAD PREEMPTION SEQUENCE OF OPERATION AND EMERGENCY VEHICLE PREEMPTION SEQUENCE SOUTHWEST HIGHWAY AND KILBOURN AVE.
50 - 53	DISTRICT 1 STANDARD TRAFFIC SIGNAL DESIGN DETAILS

LIST OF STATE STANDARDS

STANDARD NO.	DESCRIPTION
STD. 701701-05	URBAN LANE CLOSURE, MULTI-LANE INTERSECTION
STD. 701901	TRAFFIC CONTROL DEVICES
STD. 857001	STANDARD PHASE DESIGNATION DIAGRAMS AND PHASE SEQUENCES
STD. 880006	TRAFFIC SIGNAL MOUNTING DETAILS

FULL SIZE PLANS HAVE BEEN PREPARED USING STANDARD ENGINEERING SCALES. REDUCED SIZED PLANS WILL NOT CONFORM TO STANDARD SCALES. IN MAKING MEASUREMENTS ON REDUCED PLANS, THE ABOVE SCALES MAY BE USED.

J.U.L.I.E.
 JOINT UTILITY LOCATION INFORMATION FOR EXCAVATION
 1-800-892-0123



CONTRACT NO. 63039

CHRISTOPHER B. BURKE ENGINEERING LTD.
 9575 West Higgins Road, Suite 600
 Rosemont, Illinois 60018
 (847) 823-0500

FEDERAL AID DESIGN ENGINEER: PHIL MARCVN
 (847) 705-4189