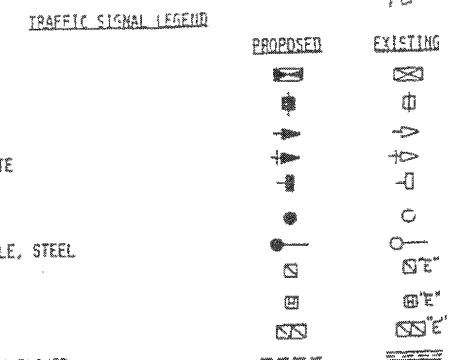
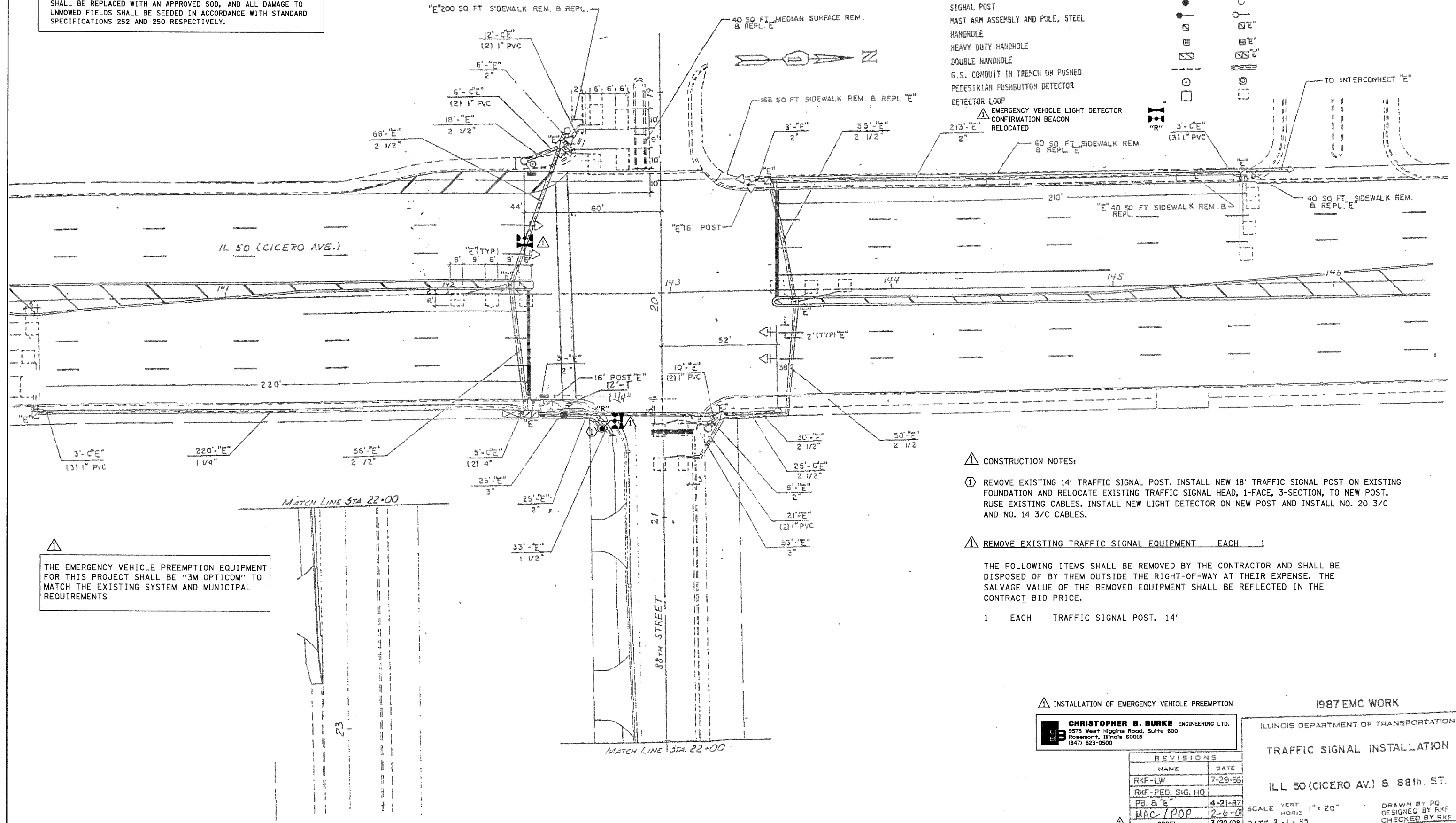


RESTORATION OF WORK AREA. RESTORATION OF THE TRAFFIC SIGNAL WORK AREA SHALL BE INCIDENTAL TO THE RELATED PAY ITEM SUCH AS FOUNDATION, CONDUIT, HANDHOLE, TRENCH AND BACKFILL, ETC., AND NO EXTRA COMPENSATION SHALL BE ALLOWED. ALL ROADWAY SURFACES SUCH AS SHOULDERS, MEDIANS, SIDEWALKS, PAVEMENT, ETC. SHALL BE REPLACED IN KIND. ALL DAMAGE TO MOWED LAWNS SHALL BE REPLACED WITH AN APPROVED SOD, AND ALL DAMAGE TO UNMOWED FIELDS SHALL BE SEED IN ACCORDANCE WITH STANDARD SPECIFICATIONS 252 AND 250 RESPECTIVELY.



- CONTROLLER
- SERVICE INSTALLATION
- SIGNAL HEAD
- SIGNAL HEAD WITH BACKPLATE
- SIGNAL HEAD, PEDESTRIAN
- SIGNAL POST
- MAST ARM ASSEMBLY AND POLE, STEEL
- HANDHOLE
- HEAVY DUTY HANDHOLE
- DOUBLE HANDHOLE
- G.S. CONDUIT IN TRENCH OR PUSHED
- PEDESTRIAN PUSHBUTTON DETECTOR
- DETECTOR LOOP
- EMERGENCY VEHICLE LIGHT DETECTOR CONFIRMATION BEACON RELOCATED



THE EMERGENCY VEHICLE PREEMPTION EQUIPMENT FOR THIS PROJECT SHALL BE "3M OPTICOM" TO MATCH THE EXISTING SYSTEM AND MUNICIPAL REQUIREMENTS

CONSTRUCTION NOTES:

- 1 REMOVE EXISTING 14' TRAFFIC SIGNAL POST. INSTALL NEW 18' TRAFFIC SIGNAL POST ON EXISTING FOUNDATION AND RELOCATE EXISTING TRAFFIC SIGNAL HEAD, 1-FACE, 3-SECTION, TO NEW POST. RUSE EXISTING CABLES. INSTALL NEW LIGHT DETECTOR ON NEW POST AND INSTALL NO. 20 3/C AND NO. 14 3/C CABLES.

REMOVE EXISTING TRAFFIC SIGNAL EQUIPMENT EACH 1

THE FOLLOWING ITEMS SHALL BE REMOVED BY THE CONTRACTOR AND SHALL BE DISPOSED OF BY THEM OUTSIDE THE RIGHT-OF-WAY AT THEIR EXPENSE. THE SALVAGE VALUE OF THE REMOVED EQUIPMENT SHALL BE REFLECTED IN THE CONTRACT BID PRICE.

- 1 EACH TRAFFIC SIGNAL POST, 14'

INSTALLATION OF EMERGENCY VEHICLE PREEMPTION

CHRISTOPHER B. BURKE ENGINEERING LTD.
 9575 West Higgins Road, Suite 600
 Rosemont, Illinois 60018
 (847) 823-0500

1987 EMC WORK

ILLINOIS DEPARTMENT OF TRANSPORTATION

TRAFFIC SIGNAL INSTALLATION

ILL 50 (CICERO AV.) & 88th. ST.

SCALE VERT 1" = 20'
 HORIZ 1" = 20'
 DATE 2-1-85

DRAWN BY PQ
 DESIGNED BY RKF
 CHECKED BY RKF

REVISIONS	
NAME	DATE
RKF-LW	7-29-86
RKF-PED. SIG. HO	
PB & "E"	4-21-87
MAC/PPD	2-6-01
CBEL	3/20/08