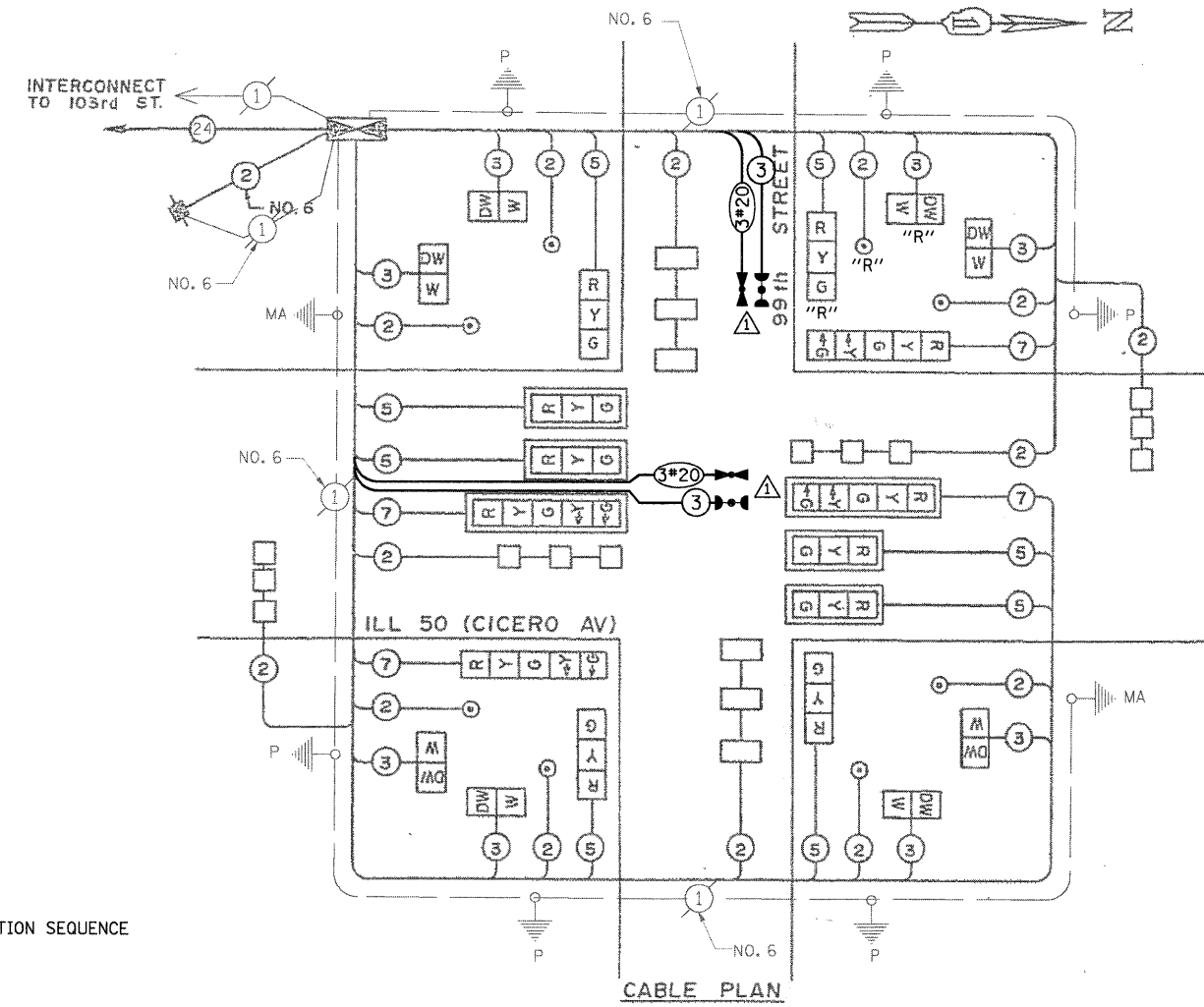
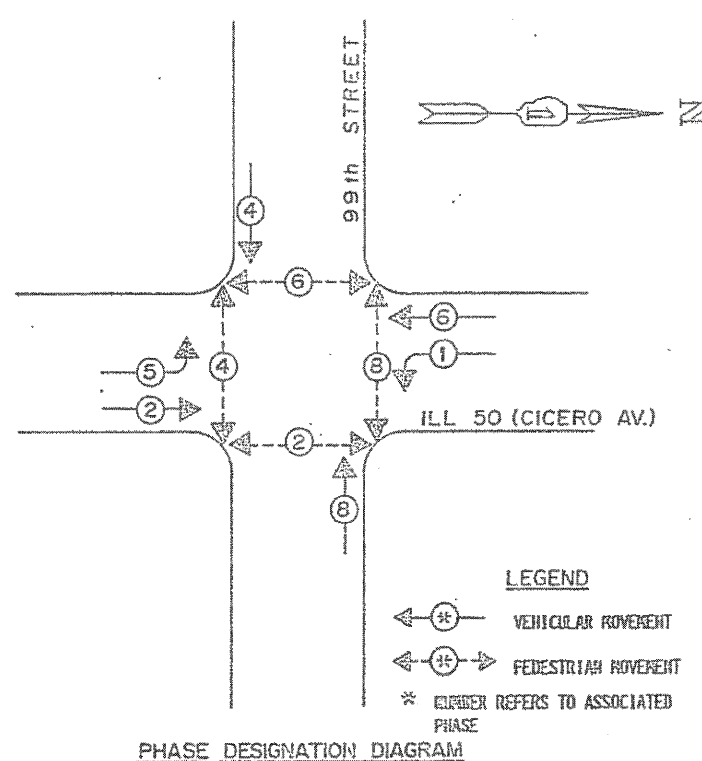


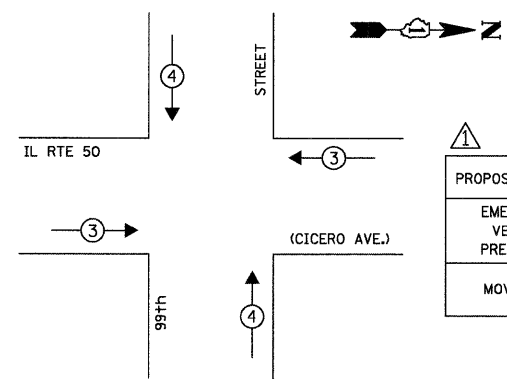
CONTROLLER SEQUENCE IV

REFERRING TO STANDARD 2395-1, THE VEHICULAR AND PEDESTRIAN PHASES USED ARE DESIGNATED BELOW.



- CABLE PLAN LEGEND**
- [G] 8" TRAFFIC SIGNAL SECTION
  - [R] 12" TRAFFIC SIGNAL SECTION
  - [W] 12" PEDESTRIAN SIGNAL SECTION
  - [C] CONTROLLER CABINET
  - [S] SERVICE INSTALLATION
  - [V] VEHICLE DETECTOR, INDUCTION LOOP
  - [P] PUSHBUTTON DETECTOR
  - (2) DENOTES NUMBER OF CONDUCTORS (NEW). ALL LOOP DETECTOR CABLE TO BE SHIELDED. ALL CABLE NO. 14 EXCEPT AS INDICATED.
  - (2) INDICATES EXISTING CABLE
  - [P] SIGNAL FACE WITH BACKPLATE
  - "P" INDICATES PROGRAMMED FACE
  - "L" INDICATES LOUVERED LENS
  - [O] OPTICAL DETECTOR
  - [R] EXISTING SIGNAL SECTION
  - [E] EMERGENCY VEHICLE LIGHT DETECTOR CONFIRMATION BEACON RELOCATED
  - "R"

EMERGENCY VEHICLE PREEMPTION SEQUENCE



PROPOSED EMERGENCY VEHICLE PREEMPTORS

EMERGENCY VEHICLE PREEMPTOR	3	4
MOVEMENT	← →	↑ ↓

RESTORATION OF WORK AREA. RESTORATION OF THE TRAFFIC SIGNAL WORK AREA SHALL BE INCIDENTAL TO THE RELATED PAY ITEM SUCH AS FOUNDATION, CONDUIT, HANDHOLE, TRENCH AND BACKFILL, ETC., AND NO EXTRA COMPENSATION SHALL BE ALLOWED. ALL ROADWAY SURFACES SUCH AS SHOULDERS, MEDIANS, SIDEWALKS, PAVEMENT, ETC. SHALL BE REPLACED IN KIND. ALL DAMAGE TO MOWED LAWNS SHALL BE REPLACED WITH AN APPROVED SOD, AND ALL DAMAGE TO UNMOWED FIELDS SHALL BE SEEDING IN ACCORDANCE WITH STANDARD SPECIFICATIONS 252 AND 250 RESPECTIVELY.

SCHEDULE OF QUANTITIES

ITEM	UNIT	TOTAL
MAINTENANCE OF EXISTING TRAFFIC SIGNAL INSTALLATION	EACH	1
ELECTRIC CABLE IN CONDUIT, SIGNAL NO. 14 3C	FOOT	236
TRAFFIC SIGNAL POST, GALVANIZED STEEL 18 FT.	EACH	1
LIGHT DETECTOR	EACH	2
LIGHT DETECTOR AMPLIFIER	EACH	1
RELOCATE EXISTING SIGNAL HEAD	EACH	1
RELOCATE EXISTING PEDESTRIAN SIGNAL HEAD	EACH	1
RELOCATE EXISTING PEDESTRIAN PUSH-BUTTON	EACH	1
MODIFY EXISTING CONTROLLER CABINET	EACH	1
REMOVE EXISTING TRAFFIC SIGNAL EQUIPMENT	EACH	1
ELECTRIC CABLE IN CONDUIT NO. 20 3/C, TWISTED, SHIELDED	FOOT	236
TRAFFIC CONTROL AND PROTECTION, STANDARD 701701	EACH	1

THE EMERGENCY VEHICLE PREEMPTION EQUIPMENT FOR THIS PROJECT SHALL BE "3M OPTICOM" TO MATCH THE EXISTING SYSTEM AND MUNICIPAL REQUIREMENTS

INSTALLATION OF EMERGENCY VEHICLE PREEMPTION  
**CHRISTOPHER B. BURKE ENGINEERING LTD.**  
 3575 West Higgins Road, Suite 600  
 Rosemont, Illinois 60018  
 (847) 823-0500

I.D.O.T. TRAFFIC SIGNAL INSTALLATION ELECTRICAL SERVICE REQUIREMENTS

TYPE	NO. OF LAMPS	WATTAGE X INCAND.	LED	% OPERATION	TOTAL WATTAGE
SIGNAL (RED)	12	135		0.50	810.00
(YELLOW)	12	135		0.25	405.00
(GREEN)	12	135		0.25	405.00
ARROW	8	135		0.10	108.00
PED. SIGNAL	8	90		1.00	720.00
CONTROLLER	1	100		1.00	100.00
ILLUM. SIGN	-	252		0.05	-
FLASHER	-			0.50	-
ENERGY COSTS TO: TOTAL =					2548.00

ILLINOIS DEPARTMENT OF TRANSPORTATION  
 DIVISION OF HIGHWAY/DISTRICT 1  
 201 WEST CENTER COURT/SCHAUMBURG, ILLINOIS 60196-1096  
 ENERGY SUPPLY: CONTACT: MILTON RAY  
 PHONE: (708) 235-2315  
 COMPANY: COMED

FOUNDATION (DEPTH)	FT. (m)	CABLE SLACK	FT. (m)	VERTICAL	FT. (m)
TYPE A - POST	4 (1.2)	HANDHOLE	6.5 (2.0)	ALL FOUNDATIONS	3.5 (1.0)
D - CONTROLLER	4 (1.2)	DOUBLE HANDHOLE	13 (4.0)	MAST ARM (L) POLE	20'+L-2'
E - M. ARM POLE		SIGNAL POST	2 (1.0)		(6m+L-0.6m)
24" (600mm)	10 (3.0)	CONTROLLER CAB.	1 (0.5)	BRACKET MOUNTED	13 (4.0)
30" (750mm)	15 (4.6)	FIBER OPTIC	13 (4.0)	PED. PUSHBUTTON	4 (1.2)
36" (900mm)	15 (4.6)	ELECTRIC SERVICE	1 (0.5)	ELECTRIC SERVICE	13.5 (4.1)
		GROUND CABLE	1 (0.5)	SERVICE TO GROUND	13.5 (4.1)
				POST MOUNTED	6 (1.8)

RALPH P. GROSS & SON, ASSOCS. INC.  
 SURVEY AND CIVIL ENGINEERS CONSULTANTS  
 VILLA PARK, ILL. 60181

REVISIONS

NAME	DATE
CBBEL	3/20/08

Illinois Department of Transportation  
 CABLE PLAN  
 PHASE DESIGNATION DIAGRAM  
 SCHEDULE OF QUANTITIES  
 ILL 50 (CICERO AV) & 99th ST.  
 SCALE: NONE  
 DATE: 1-8-90  
 DRAWN BY: DMH  
 CHECKED BY: LND