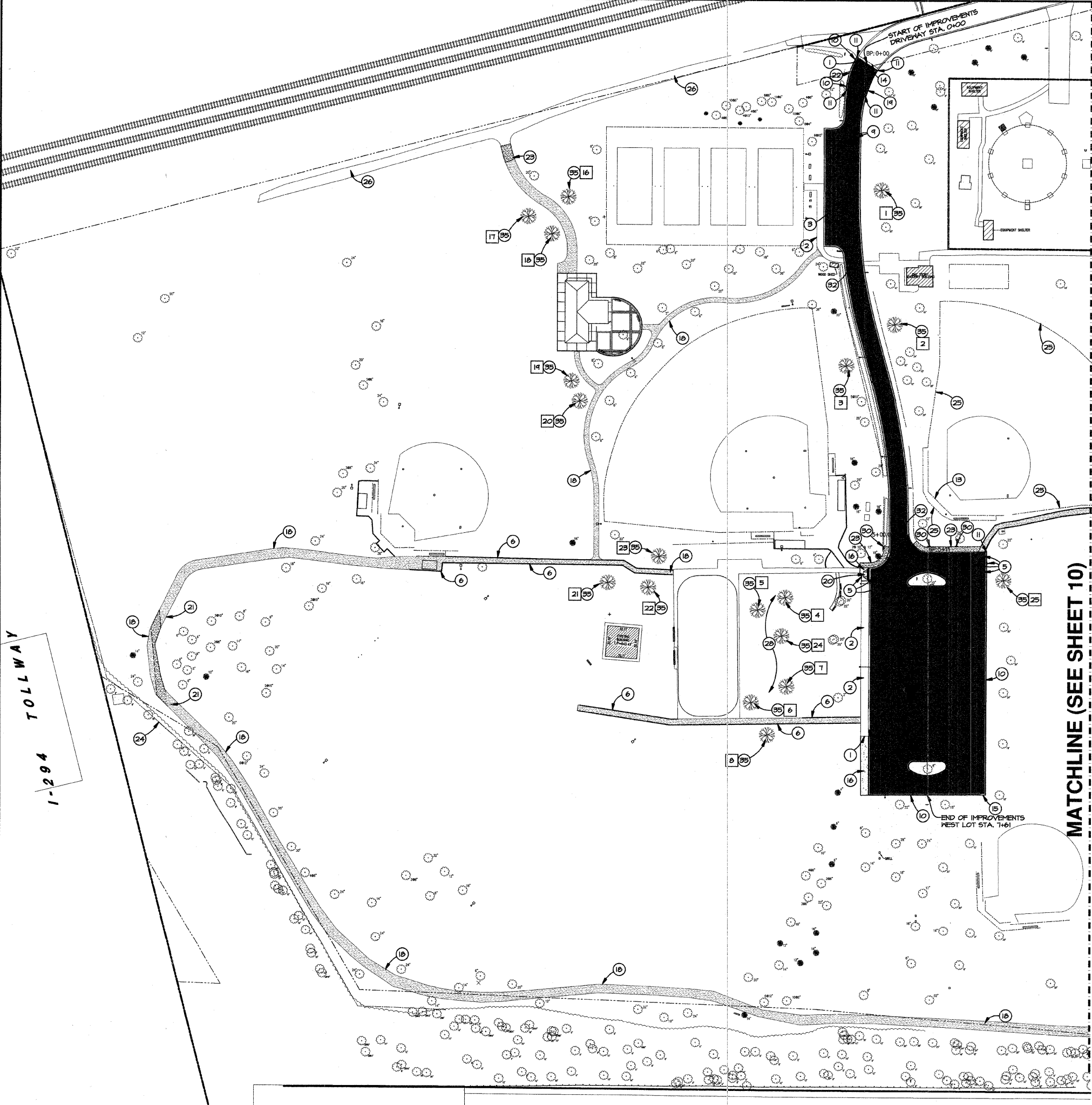


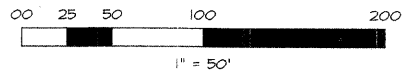
FIELD ENGINEER: MARILYN SOLOMON 847-705-4407

1-294
TOLLWAY



TREE SCHEDULE			
NUMBER	IDOT PAY ITEM NO.	DESCRIPTION	DIAMETER (IN.)
1	A2008024	PRAIRIE PRIDE HACKBERRY	3
2	A2008024	PRAIRIE PRIDE HACKBERRY	3
3	A2008024	PRAIRIE PRIDE HACKBERRY	3
4	A2007824	AMERICAN LINDENBASSWOOD	3
5	A2007824	AMERICAN LINDENBASSWOOD	3
6	A2006520	SWAMP WHITE OAK	2 1/2
7	A2006520	SWAMP WHITE OAK	2 1/2
8	A2006520	SWAMP WHITE OAK	2 1/2
9	A2007120	RED OAK	2 1/2
10	A2007120	RED OAK	2 1/2
11	A2007624	COMMON BALD CYPRESS	3
12	A2007624	COMMON BALD CYPRESS	3
13	A2007624	COMMON BALD CYPRESS	3
14	A2007624	COMMON BALD CYPRESS	3
15	A2007624	COMMON BALD CYPRESS	3
16	A2008024	PRAIRIE PRIDE HACKBERRY	3
17	A2008024	PRAIRIE PRIDE HACKBERRY	3
18	A2008024	PRAIRIE PRIDE HACKBERRY	3
19	A2007120	RED OAK	2 1/2
20	A2007120	RED OAK	2 1/2
21	A2007120	RED OAK	2 1/2
22	A2007120	RED OAK	2 1/2
23	A2007120	RED OAK	2 1/2
24	A2007624	COMMON BALD CYPRESS	3
25	A2008024	PRAIRIE PRIDE HACKBERRY	3
26	A2008024	PRAIRIE PRIDE HACKBERRY	3
27	A2008024	PRAIRIE PRIDE HACKBERRY	3

NOTE: SPECIFIC PROJECT NOTE DESCRIPTION TO BE PAID FOR AS THE ITEM NUMBER AND OR IDOT CODE NUMBER LISTED ADJACENT TO THE DESCRIPTION ().



- PROJECT NOTES:**
- NEW SAWCUTS - EXISTING PAVEMENT TO BE SAWCUT FULL DEPTH TO PROVIDE CLEAN CONSTRUCTION BREAK. (442B200)
 - EXISTING SIDEWALK TO REMAIN.
 - NEW PAINT PAVEMENT MARKINGS - LINE 4" (1800110)
 - NEW ASPHALT PATHWAY, FOLLOW CONFIGURATION OF THE EXISTING PATHWAY IN LOCATIONS WHERE EXISTING PATHS EXIST. (35100400) & (4060335)
 - PAINT PAVEMENT MARKINGS - LETTERS AND SYMBOLS - NEW HANDICAP, STRIPING, SYMBOL AND SIGN. (1800110)
 - EXISTING LANDSCAPE TREES TO REMAIN.
 - NEW PAINT PAVEMENT MARKINGS - LETTERS AND SYMBOLS - NEW 2' WIDE WHITE PAINTED STOP BAR. (1800110)
 - PAINT PAVEMENT MARKINGS - LETTERS AND SYMBOLS - NEW WHITE PAINTED TRAFFIC ARROWS. (1800110)
 - NEW 6" 1/2 CONCRETE CURB AND GUTTER. (60603800)
 - NEW SAWCUTS - EXISTING CURB TO BE SAWCUT FULL DEPTH TO PROVIDE CLEAN CONSTRUCTION BREAK. (442B200)
 - NEW AREA LIGHT (SEE PHOTOMETRIC PLAN FOR DETAILS) (50Q ITEM #54550004)
 - NEW BASEBALL BACKSTOP. (50Q ITEM #8)
 - NEW 2' BUTT JOINT. (20007500)
 - NEW 5' CURB CUT. (442B200)
 - NEW PORTLAND CEMENT CONCRETE SIDEWALK 5". (42400200) & (35100200)
 - NEW ASPHALT PAVEMENT. (40603000) & (4060335)
 - EXISTING AGGREGATE PATHWAY TO BE RE-SPREAD WITH 2" OF NEW AGGREGATE SCREENINGS. (50Q ITEM #16)
 - NEW COMBINATION CONCRETE CURB AND GUTTER TYPE B6.12 CURB WITH REVERSE GUTTER FITCH. (60603800)
 - NEW CURB RAMPS FOR SIDEWALKS WITH DETECTABLE WARNING. (42400200), (35100300) & (42400800)
 - EXISTING GRAVEL TO BE REPLACED. CONTRACTOR TO REMOVE EXISTING GRAVEL AND STOCKPILE DURING STORM SEWER INSTALLATION, THEN REPLACE AFTER INSTALLATION IS COMPLETE. (50Q ITEM #7)
 - NEW 6" CURB CUT. (442B200)
 - NEW AGGREGATE PATHWAY. (35100700)
 - NEW LOCATION FOR CHAIN LINK FENCE TO BE RELOCATED. (6640410)
 - NEW CHAIN LINK FENCE 5' - FOR BASEBALL FIELD. (66400205)
 - EXISTING GRAVEL DRIVE FOR SPREADING OF SURFACE MILLINGS.
 - NEW 8" 1/2 STOP SIGN. (TYP. OF 610X0203816)
 - NEW LANDSCAPE AREA. (21101625) & (25000210)
 - EXISTING PAVEMENT TO REMAIN.
 - NEW LOCATION OF EXISTING SIGN RELOCATION. (X240500)
 - NEW VANDAL PROOF UPLIGHT. (50Q ITEM #40)
 - NEW 5' WHITE PAINTED CROSS-WALK. (1800110) & (18001150)
 - EXISTING PAVEMENT TO REMAIN.
 - EXISTING DRINKING FOUNTAIN TO REMAIN.
 - APPROXIMATE LOCATION OF WATER MAIN. CONTRACTOR TO USE CAUTION NOT TO DAMAGE WATER MAIN DURING CONSTRUCTION.
 - NEW SHADE TREE. (SEE TREE SCHEDULE)

NOTE:
CONTRACTOR SHALL FOLLOW RECOMMENDATIONS OF THE SOILS ENGINEER FOR SUBGRADE PREPARATION. REFER TO THE SOILS REPORT FOR DETAILS. WHERE IT IS NECESSARY, UNSUITABLE SUBGRADE SHALL BE REMOVED AND FA-2 BACKFILL SHALL BE PLACED. (20201200)

SEE SITE ELECTRICAL PLANS FOR ALL PHOTOMETRIC INFORMATION.
ALL PAINTED CURB ON SITE TO BE REPAINTED FOLLOWING RE-PAVING OF THE PARKING LOT. MATCH EXISTING COLOR, REPAINT WITH HIGH QUALITY PAINT. (20086200)

CONTRACTOR AND OWNER TO FIELD CHECK EXISTING CURB PRIOR TO AND FOLLOWING RE-PAVING TO DETERMINE EXTENTS OF THE REMOVAL AND REPLACEMENT OF THE EXISTING CURBING. (44002000) & (60603800)

IN AREAS DESIGNATED TO MATCH THE TOP OF SIDEWALK ELEVATION, THE CONTRACTOR SHALL REMOVE THE EXISTING GRAVEL SIDEWALK AND MATCH THE EXISTING TOP OF SIDEWALK ELEVATION WITH THE NEW PATHWAY. THE NEW PATHWAY SHALL NOT BE RAISED ABOVE THE EXISTING ELEVATION.

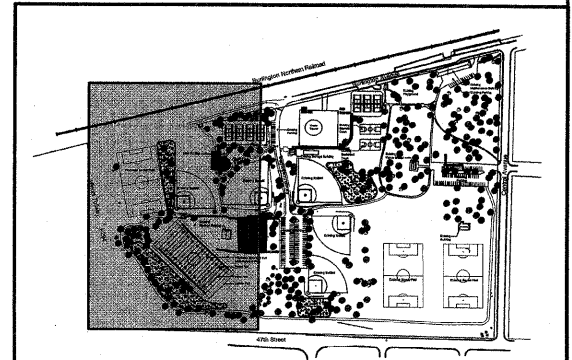
CONTRACTOR TO USE CAUTION WHEN EXCAVATING NEAR EXISTING TELE-CO MANHOLES AND EXISTING STRUCTURE #18.

MILLINGS FROM RE-PAVING TO BE SPREAD ON NORTH GRAVEL DRIVE. SEE PROJECT NOTE 27 FOR GRAVEL DRIVE LOCATION. COORDINATE WITH OWNER.

ALL LANDSCAPE AREAS DISTURBED DURING CONSTRUCTION TO HAVE 6" OF TOPSOIL AND CLASS 2A SEED. (21101625) & (25000210)

ALL TREES SHOWN ON THIS PLAN ARE TO REMAIN.

- LEGEND:**
- EXISTING AGGREGATE PATH TO BE RE-SPREAD WITH 2" OF AGGREGATE SCREENINGS. (50Q ITEM #16)
 - NEW ASPHALT PAVEMENT.
1-1/2" HMA SURFACE COURSE MIX 10' N50 (40603310)
2-1/4" HMA BINDER COURSE, IL-19.0N50 (40603080)
BITUMINOUS MATERIALS PRIME COAT (40300100)
AGGREGATE BASE COURSE, TYPE A 10" (35100400)
 - NEW ASPHALT PATHWAY.
2" HMA SURFACE COURSE MIX 10' N50 (40603310)
AGGREGATE BASE COURSE, TYPE A 5" (35100400)
 - NEW AGGREGATE PATHWAY.
3" LIMESTONE SCREENINGS SURFACE (NEW PATHS) (50Q ITEM # 15)
AGGREGATE BASE COURSE, TYPE A 8" (35100700)
 - NEW SHADE TREE. (SEE TREE SCHEDULE)



KEY MAP
1" = 200'
SPRING ROCK PARK

FA RTE.	SECTION	COUNTY
-- --	05-P4096-00-PK	COOK
FED. ROAD DIST. NO.	ILLINOIS	CONTRACT NO. 63060

DATE	BY
6-18-08	JPG
6-24-08	JPG
7-18-08	JPG
7-25-08	JPG
8-4-08	JPG

REVISONS	DATE	BY
PER IDOT COMMENTS	6-18-08	JPG
PER IDOT COMMENTS	6-24-08	JPG
PER IDOT COMMENTS	7-18-08	JPG
PER IDOT COMMENTS	7-25-08	JPG
PER IDOT COMMENTS	8-4-08	JPG

W-T CIVIL ENGINEERING, LLC.
CIVIL AND STRUCTURAL ENGINEERS
2875 Prairie Avenue
Hoffman Estates, Illinois 60182
PH: (224) 285-6333 FAX: (224) 285-6444
www.wtengineering.com
IL License No.: 184-003492 Exp: 04/30/09

W-T

SPRING ROCK PARK
CENTRAL AVE & 47TH ST
WESTERN SPRINGS, IL

SITE DEVELOPMENT PLAN

DATE:	05/23/08
SCALE:	1" = 50'
DRAWN:	JPG
CHECK:	TOA
JOB:	CE06316
SHEET:	9 OF 26