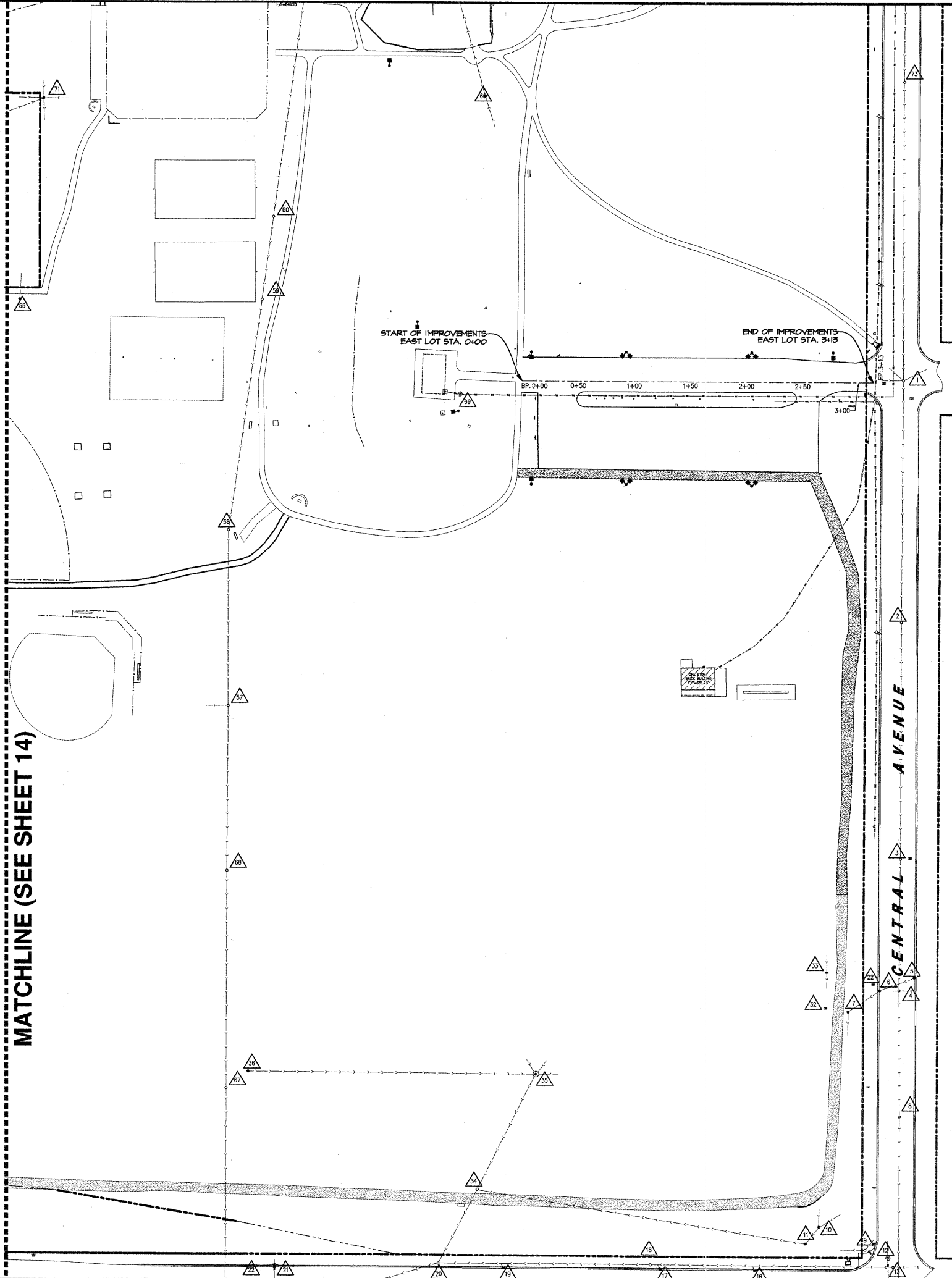


MATCHLINE (SEE SHEET 14)



UTILITY LEGEND

- EXISTING STORM SEWER
PROPOSED STORM SEWER
EXISTING SANITARY SEWER
PROPOSED SANITARY SEWER
EXISTING COMBINATION SEWER
PROPOSED COMBINATION SEWER
EXISTING WATER MAIN
PROPOSED WATER MAIN
EXISTING WATER SERVICE
PROPOSED WATER SERVICE
EXISTING ELECTRIC SERVICE
PROPOSED ELECTRIC SERVICE
EXISTING GAS SERVICE
PROPOSED GAS SERVICE
EXISTING TELEPHONE SERVICE
PROPOSED TELEPHONE SERVICE
EXISTING MANHOLE
PROPOSED MANHOLE
EXISTING CATCH BASIN
PROPOSED CATCH BASIN
EXISTING INLET (CURB)
PROPOSED INLET
EXISTING WATER VAULT W/ VALVE
PROPOSED WATER VAULT W/ VALVE
EXISTING B-BOX
PROPOSED B-BOX
EXISTING FIRE HYDRANT
PROPOSED FIRE HYDRANT
PROPOSED AREA LIGHT
PROPOSED RIM ELEVATION
PROPOSED INVERT ELEVATION

STORM SEWER

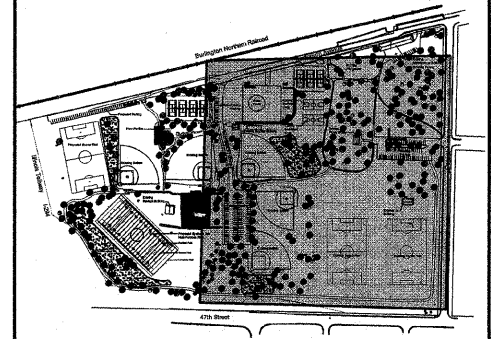
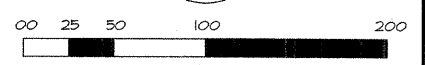
- 1. PRECAST REINFORCED CONCRETE FLARED END SECTIONS 24" (54213664)
2. STORM SEWER, CLASS A, TYPE I 24", 251 L.F. @ 0.12% SLOPE (550A0120)
3. CATCH BASIN, TYPE A, 5'-DIAMETER, TYPE B GRATE (60204505)
4. STORM SEWER, CLASS A, TYPE I 24", 255 L.F. @ 0.41% SLOPE (550A0120)
5. CATCH BASIN, TYPE A, 5'-DIAMETER, TYPE B GRATE (60204505)
6. STORM SEWER, CLASS A, TYPE I 24", 210 L.F. @ 0.52% SLOPE (550A0120)
7. PRECAST REINFORCED CONCRETE FLARED END SECTIONS 24" (54213664)
8. PRECAST REINFORCED CONCRETE FLARED END SECTIONS 24" (54213664)
9. STORM SEWER, CLASS A, TYPE I 24", 40 L.F. @ 0.50% SLOPE (550A0120)
10. PRECAST REINFORCED CONCRETE FLARED END SECTIONS 24" (54213664)
11. EXISTING STORM SEWER TO REMAIN. CONTRACTOR TO CAP BOTH ENDS WITH CONCRETE.
12. MANHOLE, TYPE A, 5'-DIAMETER, TYPE I FRAME, CLOSED LID (60221100)
13. STORM SEWER, CLASS A, TYPE I 24", 147 L.F. @ 0.47% SLOPE (550A0120)
14. NEW 6" HD.P.E. UNDERDRAIN, 147 L.F. @ 0.47% SLOPE. (TO BE PAID FOR AS (60108200))
15. NEW NDS SPEED-D BASIN PART NO. 101 WITH 8" ROUND GRATE PART NO. 10. (TO BE PAID FOR AS SOG #80)
16. MANHOLE, TYPE A, 5'-DIAMETER, TYPE B GRATE (60221100)
17. STORM SEWER, CLASS A, TYPE I 24", 30 L.F. @ 0.52% SLOPE (550A0120)

NOTE: CONTRACTOR TO VERIFY LOCATION OF EXISTING UTILITIES IN THE FIELD. CONTRACTOR TO FIELD CHECK ALL EXISTING STRUCTURES AND PIPES TO VERIFY THERE ARE NO CONFLICTS WITH PROPOSED IMPROVEMENTS. IF CONFLICT EXISTS, CONTRACTOR TO CONTACT SITE ENGINEER IMMEDIATELY.

CONTRACTOR TO USE CAUTION WHEN EXCAVATING IN AREAS NEAR EXISTING UTILITIES.

EXISTING UTILITY DATA

Table with columns for FA RTE, SECTION, COUNTY, FED. ROAD DIST. NO., ILLINOIS, and CONTRACT NO. 63060. Lists various utility structures and their details.



KEY MAP SPRING ROCK PARK 1"=200'

Table with columns for DATE, REVISIONS, PER IDOT COMMENTS, and PER IDOT COMMENTS. Lists revision dates and descriptions.

W-T CIVIL ENGINEERING, LLC. CIVIL AND STRUCTURAL ENGINEERS. 307E Plutonium Avenue Hoffman Estates, Illinois 60132. PH: (224) 293-6333 FAX: (224) 293-6444 www.wtengineering.com I.L. License No.: 184-003492 Exp: 04/30/09

SPRING ROCK PARK CENTRAL AVE & 47TH ST WESTERN SPRINGS, IL

SITE UTILITY PLAN DATE: 05/23/08 SCALE: 1" = 50' DRAWN: JFG CHECK: TOA JOB: CE06316 SHEET 15 OF 26