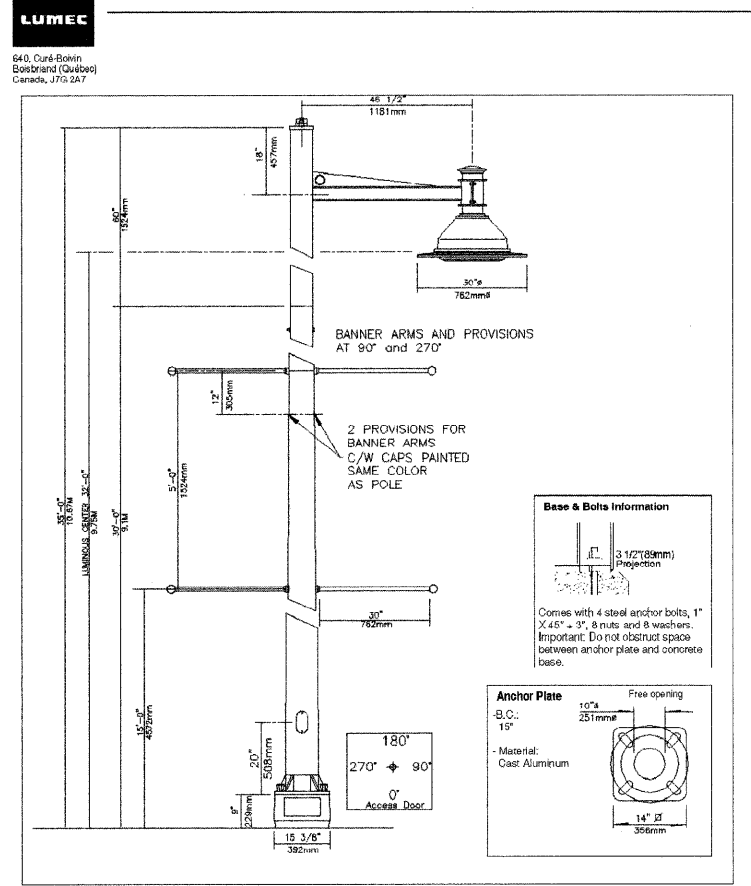


F.A.U. R.T.E.	SECTION	COUNTY	TOTAL SHEETS	SHEET NO.
1321	05-00049-00-LT	COOK	9	9
LIGHTING DETAILS				
ILLINOIS				

CONTRACT NO. 63068

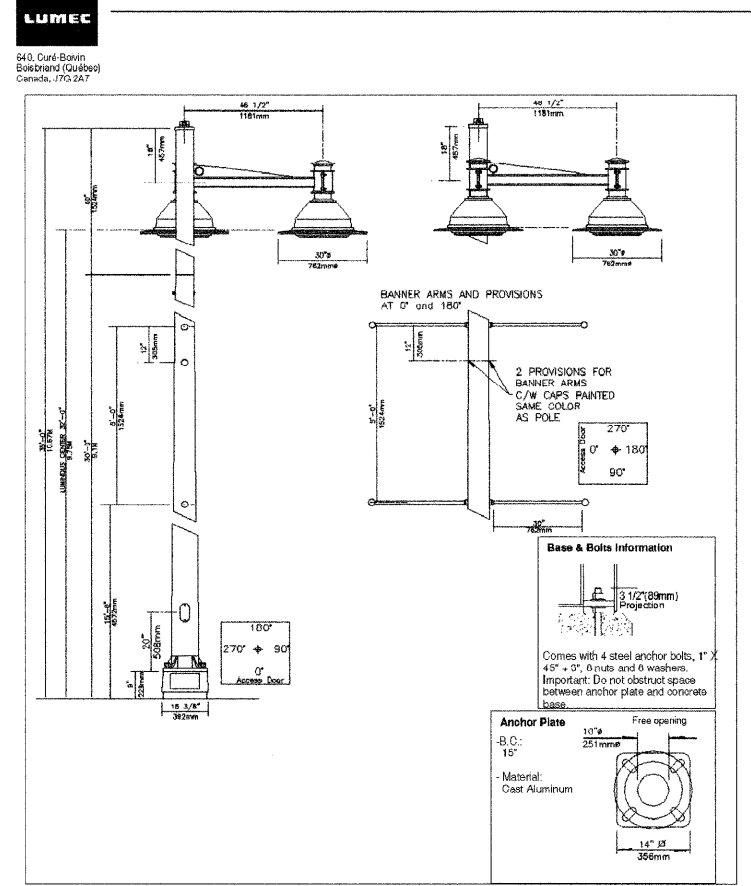
Streamwood Irving Park Road (30052)



LMS49375C1-30052(SA)JFD.DOC 05-30-2008 Page 1 / 5
PHILIPS

LUMINAIRE: TR20-250HPS-SG2-OTA/240-BRTX-LMS49375C
HOOD: CAST 356 ALUMINUM DOME, MECHANICALLY ASSEMBLED ON THE LUMINAIRE.
SKIRT: SPUN 1100-0 ALUMINUM, MECHANICALLY ASSEMBLED ON THE LUMINAIRE.
LAMP: 250 WATT HIGH PRESSURE SODIUM (ANSI CODE S50), ED 18 BULB, MOGUL BASE.
OPTICAL SYSTEM: (SG2), I.E.S. TYPE II (ASYMMETRICAL), REFLECTOR COMPOSED OF A CHEMICALLY BRIGHTENED MULTI-FACETED ANODIZED ALUMINUM, MOUNTED ON A WHITE FRAME. THIS ASSEMBLY ALLOWS FOR A FULL ROTATION OF THE OPTICAL SYSTEM IN 90 DEGREE INCREMENTS.
BALLAST: HIGH POWER FACTOR OF 90%. PRIMARY VOLTAGE 120/208/240/277 VOLTS, CONNECTED TO 240 VOLTS. LAMP STARTING CAPACITY -40F (-40C) DEGREES. ASSEMBLED ON A UNITIZED REMOVABLE TRAY WITH QUICK DISCONNECT PLUG.
ACCESS-MECHANISM: A DIE CAST ALUMINUM TECHNICAL RING WITH LATCH AND HINGE. THE MECHANISM SHALL OFFER TOOLFREE ACCESS TO THE INSIDE OF THE LUMINAIRE. AN EMBEDDED MEMORY-RETENTIVE GASKET SHALL ENSURE WEATHERPROOFING.
BRACKET: UN-1A-90DEG-BRTX-LMS49375C
ARM: SHALL BE MADE FROM EXTRUDED ALUMINUM 6063-T4, WELDED.
ADAPTOR: CLAMPS MADE OF CAST 356 ALUMINUM, WELDED TO THE ARM AND MECHANICALLY FASTENED TO THE LUMINAIRE BY STAINLESS STEEL BOLTS AND NUTS.
CENTRAL ADAPTOR: MADE OF ALUMINUM, 6" (152.4MM) O.D., C/W A TENON PENETRATING 12" (305MM) INSIDE THE POLE, MECHANICALLY SECURED.
BRACKET OPTIONS: (90 DEG), BRACKET TO BE ORIENTED AT 90 DEGREE FROM ACCESS DOOR.
POLE: ATR106N-20-25-BA-BRTX-LMS49375C
POLE SHAFT: MADE OF ALUMINUM 6063-T4, ROUND, TEMPERED TO T6 AFTER WELDING, HAVING A BASE DIAMETER OF 10" (254MM) AND TOP DIAMETER OF 6" (152MM) WALL THICKNESS 0.188" (4.8MM) WELDED TO BOTH THE BOTTOM AND TOP OF THE ANCHOR PLATE. C/W BANNER PROVISIONS.
MAINTENANCE OPENING: THE POLE SHALL HAVE A 4" X 8" (102MM X 203MM) MAINTENANCE OPENING CENTERED 20" (508MM) FROM THE BOTTOM OF THE ANCHOR PLATE, COMPLETE WITH A WEATHERPROOF ALUMINUM COVER AND A COPPER GROUND LUG.
NUT COVER: MADE FROM SPUN ALUMINUM.
POLE OPTIONS: (BA) TWO WAY (180 DEG), UPPER AND LOWER ARMS (2), FIXED STANDARD TYPE, MADE OF ALUMINUM TUBING, 1 1/16" (27MM) OUTSIDE DIAMETER, MECHANICALLY ASSEMBLED TO THE POLE, COMPLETE WITH A STANDARD CAST ALUMINUM DECORATIVE BALL.
MISCELLANEOUS: BT-BRTX-LMS49375C
TRANSITION BASE: MADE OF ALUMINUM 356, C/W ACCESS DOOR COVERING AN OPENING OF 11" X 5 1/2" (279MM X 139MM).
WIRING: GAUGE (#14) TEW WIRES, 6" (152MM) MINIMUM EXCEEDING THE BRACKET.
HARDWARE: ALL EXPOSED SCREWS WILL BE IN STAINLESS STEEL. ALL SEALS AND SEALING DEVICES ARE MADE AND/OR LINED WITH EPDM AND/OR SILICONE.
FINISH: COLOR TO BE BRONZE TEXTURED (BRTX). APPLICATION OF A POLYESTER POWDER COAT PAINT. (4 MILS/100 MICRONS). THE CHEMICAL COMPOSITION PROVIDES A HIGHLY DURABLE UV AND SALT SPRAY RESISTANT FINISH IN ACCORDANCE TO THE ASTM-B117-73 STANDARD AND HUMIDITY PROOF IN ACCORDANCE TO THE ASTM-D2247-68 STANDARD.
LIGHTING UNIT ASSEMBLY SHALL MEET AASHTO LOADING REQUIREMENTS AND SHALL BE UL CLASSIFIED.

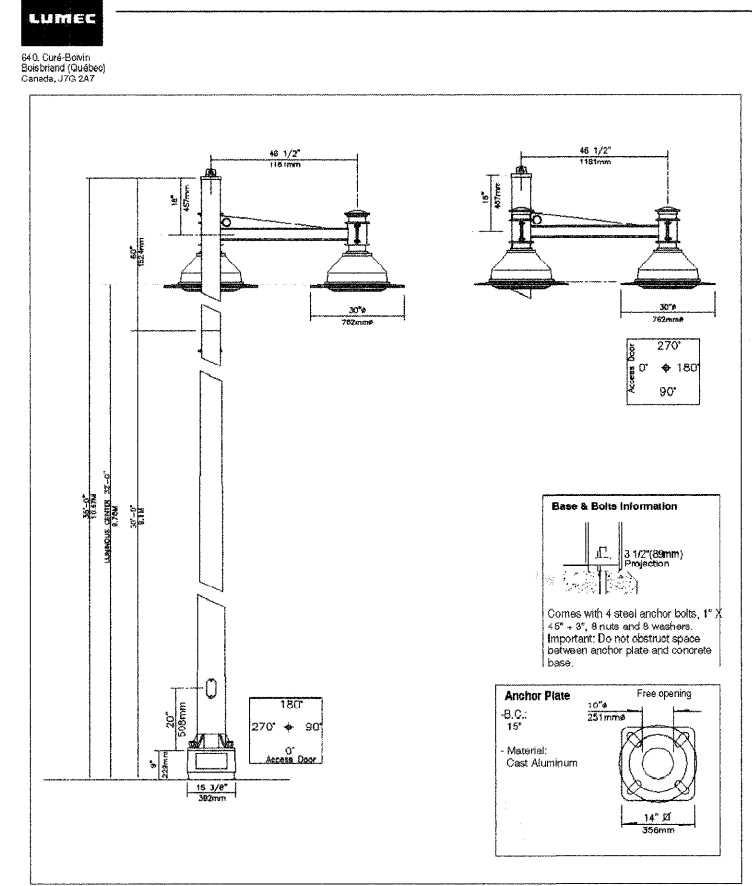
Streamwood Irving Park Road (30052)



LMS49375E0-30052(SA)JFD.DOC 05-30-2008 Page 1 / 5
PHILIPS

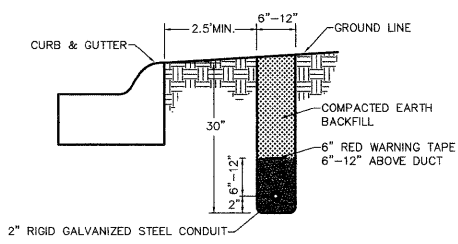
LUMINAIRE: TR20-250HPS-SG2-OTA/240-BRTX-LMS49375E
HOOD: CAST 356 ALUMINUM DOME, MECHANICALLY ASSEMBLED ON THE LUMINAIRE.
SKIRT: SPUN 1100-0 ALUMINUM, MECHANICALLY ASSEMBLED ON THE LUMINAIRE.
LAMP: 250 WATT HIGH PRESSURE SODIUM (ANSI CODE S50), ED 18 BULB, MOGUL BASE.
OPTICAL SYSTEM: (SG2), I.E.S. TYPE II (ASYMMETRICAL), REFLECTOR COMPOSED OF A CHEMICALLY BRIGHTENED MULTI-FACETED ANODIZED ALUMINUM, MOUNTED ON A WHITE FRAME. THIS ASSEMBLY ALLOWS FOR A FULL ROTATION OF THE OPTICAL SYSTEM IN 90 DEGREE INCREMENTS.
BALLAST: HIGH POWER FACTOR OF 90%. PRIMARY VOLTAGE 120/208/240/277 VOLTS, CONNECTED TO 240 VOLTS. LAMP STARTING CAPACITY -40F (-40C) DEGREES. ASSEMBLED ON A UNITIZED REMOVABLE TRAY WITH QUICK DISCONNECT PLUG.
ACCESS-MECHANISM: A DIE CAST ALUMINUM TECHNICAL RING WITH LATCH AND HINGE. THE MECHANISM SHALL OFFER TOOLFREE ACCESS TO THE INSIDE OF THE LUMINAIRE. AN EMBEDDED MEMORY-RETENTIVE GASKET SHALL ENSURE WEATHERPROOFING.
BRACKET: UN-2A-BRTX-LMS49375E
ARM: SHALL BE MADE FROM EXTRUDED ALUMINUM 6063-T4, WELDED.
ADAPTOR: CLAMPS MADE OF CAST 356 ALUMINUM, WELDED TO THE ARM AND MECHANICALLY FASTENED TO THE LUMINAIRE BY STAINLESS STEEL BOLTS AND NUTS.
CENTRAL ADAPTOR: MADE OF ALUMINUM, 6" (152.4MM) O.D., C/W A TENON PENETRATING 12" (305MM) INSIDE THE POLE, MECHANICALLY SECURED.
POLE: ATR106N-20-25-BA-BRTX-LMS49375E
POLE SHAFT: MADE OF ALUMINUM 6063-T4, ROUND, TEMPERED TO T6 AFTER WELDING, HAVING A BASE DIAMETER OF 10" (254MM) AND TOP DIAMETER OF 6" (152MM) WALL THICKNESS 0.188" (4.8MM) WELDED TO BOTH THE BOTTOM AND TOP OF THE ANCHOR PLATE. C/W BANNER PROVISIONS.
MAINTENANCE OPENING: THE POLE SHALL HAVE A 4" X 8" (102MM X 203MM) MAINTENANCE OPENING CENTERED 20" (508MM) FROM THE BOTTOM OF THE ANCHOR PLATE, COMPLETE WITH A WEATHERPROOF ALUMINUM COVER AND A COPPER GROUND LUG.
NUT COVER: MADE FROM SPUN ALUMINUM.
POLE OPTIONS: (BA) TWO WAY (180 DEG), UPPER AND LOWER ARMS (2), FIXED STANDARD TYPE, MADE OF ALUMINUM TUBING, 1 1/16" (27MM) OUTSIDE DIAMETER, MECHANICALLY ASSEMBLED TO THE POLE, COMPLETE WITH A STANDARD CAST ALUMINUM DECORATIVE BALL.
MISCELLANEOUS: BT-BRTX-LMS49375E
TRANSITION BASE: MADE OF ALUMINUM 356, C/W ACCESS DOOR COVERING AN OPENING OF 11" X 5 1/2" (279MM X 139MM).
WIRING: GAUGE (#14) TEW WIRES, 6" (152MM) MINIMUM EXCEEDING THE BRACKET.
HARDWARE: ALL EXPOSED SCREWS WILL BE IN STAINLESS STEEL. ALL SEALS AND SEALING DEVICES ARE MADE AND/OR LINED WITH EPDM AND/OR SILICONE.
FINISH: COLOR TO BE BRONZE TEXTURED (BRTX). APPLICATION OF A POLYESTER POWDER COAT PAINT. (4 MILS/100 MICRONS). THE CHEMICAL COMPOSITION PROVIDES A HIGHLY DURABLE UV AND SALT SPRAY RESISTANT FINISH IN ACCORDANCE TO THE ASTM-B117-73 STANDARD AND HUMIDITY PROOF IN ACCORDANCE TO THE ASTM-D2247-68 STANDARD.
LIGHTING UNIT ASSEMBLY SHALL MEET AASHTO LOADING REQUIREMENTS AND SHALL BE UL CLASSIFIED.

Streamwood Irving Park Road (30052)



LMS49375F0-30052(SA)JFD.DOC 05-30-2008 Page 1 / 5
PHILIPS

LUMINAIRE: TR20-400HPS-SG2-OTA/240-BRTX-LMS49375F
HOOD: CAST 356 ALUMINUM DOME, MECHANICALLY ASSEMBLED ON THE LUMINAIRE.
SKIRT: SPUN 1100-0 ALUMINUM, MECHANICALLY ASSEMBLED ON THE LUMINAIRE.
LAMP: 400 WATT HIGH PRESSURE SODIUM (ANSI CODE S50), ED 18 BULB, MOGUL BASE.
OPTICAL SYSTEM: (SG2), I.E.S. TYPE II (ASYMMETRICAL), REFLECTOR COMPOSED OF A CHEMICALLY BRIGHTENED MULTI-FACETED ANODIZED ALUMINUM, MOUNTED ON A WHITE FRAME. THIS ASSEMBLY ALLOWS FOR A FULL ROTATION OF THE OPTICAL SYSTEM IN 90 DEGREE INCREMENTS.
BALLAST: HIGH POWER FACTOR OF 90%. PRIMARY VOLTAGE 120/208/240/277 VOLTS, CONNECTED TO 240 VOLTS. LAMP STARTING CAPACITY -40F (-40C) DEGREES. ASSEMBLED ON A UNITIZED REMOVABLE TRAY WITH QUICK DISCONNECT PLUG.
REMOTE BALLAST: LOCATED INSIDE TRANSITION BASE.
ACCESS-MECHANISM: A DIE CAST ALUMINUM TECHNICAL RING WITH LATCH AND HINGE. THE MECHANISM SHALL OFFER TOOLFREE ACCESS TO THE INSIDE OF THE LUMINAIRE. AN EMBEDDED MEMORY-RETENTIVE GASKET SHALL ENSURE WEATHERPROOFING.
BRACKET: UN-2A-BRTX-LMS49375F
ARM: SHALL BE MADE FROM EXTRUDED ALUMINUM 6063-T4, WELDED.
ADAPTOR: CLAMPS MADE OF CAST 356 ALUMINUM, WELDED TO THE ARM AND MECHANICALLY FASTENED TO THE LUMINAIRE BY STAINLESS STEEL BOLTS AND NUTS.
CENTRAL ADAPTOR: MADE OF ALUMINUM, 6" (152.4MM) O.D., C/W A TENON PENETRATING 12" (305MM) INSIDE THE POLE, MECHANICALLY SECURED.
POLE: ATR106N-20-25-BA-BRTX-LMS49375F
POLE SHAFT: MADE OF ALUMINUM 6063-T4, ROUND, TEMPERED TO T6 AFTER WELDING, HAVING A BASE DIAMETER OF 10" (254MM) AND TOP DIAMETER OF 6" (152MM) WALL THICKNESS 0.188" (4.8MM) WELDED TO BOTH THE BOTTOM AND TOP OF THE ANCHOR PLATE. C/W BANNER PROVISIONS.
MAINTENANCE OPENING: THE POLE SHALL HAVE A 4" X 8" (102MM X 203MM) MAINTENANCE OPENING CENTERED 20" (508MM) FROM THE BOTTOM OF THE ANCHOR PLATE, COMPLETE WITH A WEATHERPROOF ALUMINUM COVER AND A COPPER GROUND LUG.
NUT COVER: MADE FROM SPUN ALUMINUM.
MISCELLANEOUS: BT-BRTX-LMS49375F
TRANSITION BASE: MADE OF ALUMINUM 356, C/W ACCESS DOOR COVERING AN OPENING OF 11" X 5 1/2" (279MM X 139MM).
WIRING: GAUGE (#14) TEW WIRES, 6" (152MM) MINIMUM EXCEEDING THE BRACKET.
HARDWARE: ALL EXPOSED SCREWS WILL BE IN STAINLESS STEEL. ALL SEALS AND SEALING DEVICES ARE MADE AND/OR LINED WITH EPDM AND/OR SILICONE.
FINISH: COLOR TO BE BRONZE TEXTURED (BRTX). APPLICATION OF A POLYESTER POWDER COAT PAINT. (4 MILS/100 MICRONS). THE CHEMICAL COMPOSITION PROVIDES A HIGHLY DURABLE UV AND SALT SPRAY RESISTANT FINISH IN ACCORDANCE TO THE ASTM-B117-73 STANDARD AND HUMIDITY PROOF IN ACCORDANCE TO THE ASTM-D2247-68 STANDARD.
LIGHTING UNIT ASSEMBLY SHALL MEET AASHTO LOADING REQUIREMENTS AND SHALL BE UL CLASSIFIED.



NOTE:
1. ALL SURFACES MUST BE RESTORED TO ORIGINAL CONDITION.

CONDUIT TRENCH AND BACKFILL

PLANS PREPARED BY:
GEWALT HAMILTON ASSOCIATES, INC.
Consulting Engineers & Surveyors
850 Forest Edge Drive
Vernon Hills, IL 60061
(847) 478-9700
(847) 478-9701 Fax

REVISIONS	
NAME	DATE

ILLINOIS DEPARTMENT OF TRANSPORTATION
LIGHTING DETAILS
IRVING PARK ROAD LIGHTING
STREAMWOOD, ILLINOIS
SCALE: N.T.S.
DATE: 6-16-08
DRAWN BY: DRS
DESIGNED BY: AJP
CHECKED BY: BLS