

# INDEX OF SHEETS

SHEET NO.	DESCRIPTION
1.	COVER SHEET
2.	SUMMARY OF QUANTITIES
3.	GENERAL NOTES
4.	TYPICAL SECTIONS
5.	EXISTING PLAN & CROSS SECTION
** 6.	STAGE CONSTRUCTION PLAN
7.	RESURFACING PLAN WEST END
8.	RESURFACING PLAN EAST END
9.	TRAFFIC CONTROL AND PROTECTION STAGE I EASTBOUND
10.	TRAFFIC CONTROL AND PROTECTION STAGE I WESTBOUND
11.	TRAFFIC CONTROL AND PROTECTION STAGE II
12.	TRAFFIC CONTROL AND PROTECTION STAGE II
* 13.F	TRAFFIC CONTROL AND PROTECTION STAGE II

\*\* 6A, 6B. INCLUDED

### \* DISTRICT STANDARDS (INCLUDED AS 13A.-13F.)

- 39.1 TRAFFIC CONTROL TYPICAL WEAVE
- 39.2 INFORMATIONAL WARNING SIGNS (FOR NARROW TRAVEL LANES)
- 41.1 TYPICAL PAVEMENT MARKINGS
- 44.1 PAINTING DETAILS
- 91.2 ROUGH GROOVED SURFACE SIGN
- 95.2 TRAFFIC CONTROL AND PROTECTION FOR RAMPS

### STANDARDS

- 642001 Shoulder Rumble Strips
- 701101-01 Off-Road Operations, Multilane, 4.5 m (15') to 600 mm (24 $\frac{3}{32}$ ) From Pavement Edge
- 701400-02 APPROACH TO LANE CLOSURE, FREEWAY/EXPRESSWAY
- 701402-06 LANE CLOSURE, FREEWAY/EXPRESSWAY WITH BARRIER
- 701406-04 Lane Closure, Freeway/Expressway, Day Operations Only
- 701411-04 LANE CLOSURE, MULTILANE, AT ENTRANCE OR EXIT RAMP, FOR SPEEDS > 45 MPH
- 701421-01 Lane Closure, Multilane, Day Operations Only, for Speeds > 45 MPH to 55 MPH
- 701426-02 Lane Closure, Multilane, Intermittent or Moving Operation, for Speeds > 45 MPH
- 701901 Traffic Control Devices
- 704001-04 TEMPORARY CONCRETE BARRIER
- 720011 Metal Posts for Signs, Markers and Delineators
- 728001 Telescoping Steel Sign Support
- 729001 Applications of Types A and B Metal Posts (For Signs & Markers)
- 780001-01 Typical Pavement Markings
- 781001-02 Typical Applications Raised Reflective Pavement Markers

### PROJECT LOCATION

**INCLUDES BRIDGE DECK WEARING SURFACE  
REMOVAL AND REPLACEMENT  
STR. NO. 101-0055 & 101-0056 AT STA. 455+34.5**

JULIE 1-800-892-0123

DISTRICT 2

TOWNSHIP: ROCKFORD SECTION 10

CONTRACT NO. 64E16

JOB NO. D-92-065-08

**PLANS PREPARED BY: SOODAN & ASSOCIATES, INC.**  
100 NORTH LASALLE ST., SUITE 1800  
CHICAGO, ILLINOIS 60602

## STATE OF ILLINOIS DEPARTMENT OF TRANSPORTATION

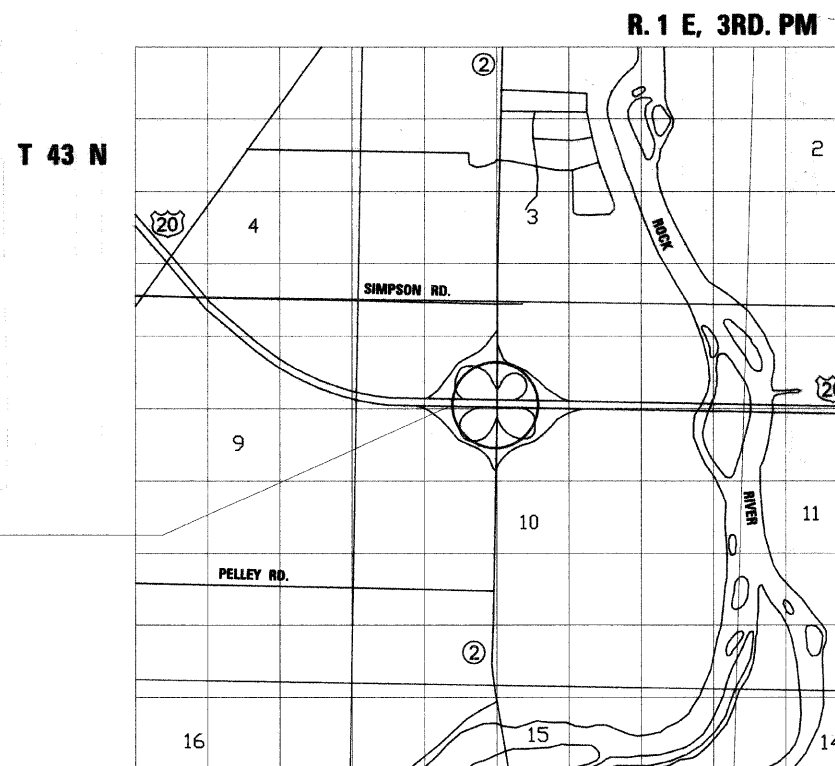
### DIVISION OF HIGHWAYS

# PLANS FOR BRIDGE DECK WEARING SURFACE REMOVAL AND REPLACEMENT

**SN 101-0055 & 101-0056  
CARRYING US 20 OVER ILLINOIS 2  
FAP 301 (US 20), SECTION (3HB)M-1  
WINNEBAGO COUNTY**

64E16

C-92-108-08



HAKIM H. TAIYEBI  
ILLINOIS LICENSED  
STRUCTURAL ENGINEER  
NO. 081-003266  
LICENSE EXP. 11-30-08

F.A.S. RTE.	SECTION	COUNTY	TOTAL SHEETS	SHEET NO.
U.S.20	(3HB)M-1	WINNEBAGO	13	1

D-92-065-08

64E16

13

1



**FUNCTIONAL CLASSIFICATION: MAJOR COLLECTOR (NON-URBAN)**  
DESIGN SPEED : 55 MPH  
POSTED SPEED : 65 MPH  
ADT : 35700 (2005)  
PV : 85%  
SU : 10%  
MU : 5%

### STATE OF ILLINOIS DEPARTMENT OF TRANSPORTATION DIVISION OF HIGHWAYS

SUBMITTED July 28 2008  
George F. Ryan  
DEPUTY DIRECTOR OF HIGHWAYS, REGION ENGINEER  
August 15, 2008  
Eric E. Haran  
ENGINEER OF DESIGN AND ENVIRONMENT  
August 15, 2008  
Christine M. Reed  
DIRECTOR OF HIGHWAYS, CHIEF ENGINEER

PRINTED BY THE AUTHORITY  
OF THE STATE OF ILLINOIS

STATE OF ILLINOIS  
DEPARTMENT OF TRANSPORTATION

SUMMARY OF QUANTITIES

SPN-2A  
100% STATE

ROUTE NO.	SECTION	COUNTY	TOTAL SHEETS	SHEET NO.
U.S. 20	(3)BIM-1	WINNEBAGO	13	2
FED. ROAD DIST. NO. 7	ILLINOIS	FED. AID PROJECT-		

CONTRACT # 64E16  
SPN-2A  
100% STATE

CODE NO.	ITEM	UNIT	QUANTITY
40300200	BITUMINOUS MATERIALS (PRIME COAT)	TON	23
40600300	AGGREGATE (PRIME COAT)	TON	33
40600845	POLYMERIZED LEVELING BINDER (MACHINE METHOD), N90	TON	1235
40600982	HOT-MIX ASPHALT SURFACE REMOVAL - BUTT JOINT	SQ YD	1610
40600990	TEMPORARY RAMP	SQ YD	125
40603310	HOT-MIX ASPHALT SURFACE COURSE, MIX "C", N50	TON	1880
40603570	POLYMERIZED HOT-MIX ASPHALT SURFACE COURSE, MIX "E", N90	TON	1772
44000157	HOT-MIX ASPHALT SURFACE REMOVAL, 2"	SQ. YD	6650
44000198	HOT-MIX ASPHALT SURFACE REMOVAL, VARIABLE DEPTH	SQ YD	720
44300200	STRIP REFLECTIVE CRACK CONTROL TREATMENT	FOOT	1194
48102100	AGGREGATE WEDGE SHOULDER, TYPE B	TON	590
50501130	STRUCTURAL STEEL REPAIR	POUND	2,960
58100200	WATERPROOFING MEMBRANE SYSTEM	SQ YD	1,930
64200105	SHOULDER RUMBLE STRIP	FOOT	7812
67100100	MOBILIZATION	L SUM	1
70100207	TRAFFIC CONTROL AND PROTECTION, STANDARD 701402	EACH	4
70100309	TRAFFIC CONTROL AND PROTECTION, STANDARD 701421	EACH	2
70100420	TRAFFIC CONTROL AND PROTECTION, STANDARD 701411	EACH	8
70100700	TRAFFIC CONTROL AND PROTECTION, STANDARD 701406	L SUM	1
70106800	CHANGEABLE MESSAGE SIGN	CAL MO	2

CODE NO.	ITEM	UNIT	QUANTITY
70300100	SHORT-TERM PAVEMENT MARKING	FOOT	10,000
70300520	PAVEMENT MARKING TAPE, TYPE III 4"	FOOT	13,135
70301000	WORK ZONE PAVEMENT MARKING REMOVAL	SQ FT	4,500
70400100	TEMPORARY CONCRETE BARRIER	FOOT	400
70400200	RELOCATE TEMPORARY CONCRETE BARRIER	FOOT	400
* 78001110	PAINT PAVEMENT MARKING-LINE 4"	FOOT	4,100
* 78100100	RAISED REFLECTIVE PAVEMENT MARKER	EACH	132
78300105	PAVEMENT MARKING REMOVAL	FOOT	2,875
78300200	RAISED REFLECTIVE PAVEMENT MARKER REMOVAL	EACH	132
* 78008330	POLYUREA PAVEMENT MARKING TYPE II - LINE 6"	FOOT	62,780
Z0016002	DECK SLAB REPAIR (FULL DEPTH, TYPE II)	SQ YD	33
Z0030250	IMPACT ATTENUATORS, TEMPORARY (NON- REDIRECTIVE), TEST LEVEL 3	EACH	2
Z0030350	IMPACT ATTENUATORS, RELOCATE (NON- REDIRECTIVE), TEST LEVEL 3	EACH	1
* X0325194	IMPACT ATTENUATORS (FULLY REDIRECTIVE, NARROW), TEST LEVEL 3, SPECIAL	EACH	1
X7013015	TRAFFIC CONTROL FOR ROAD CLOSURE	L SUM	1
Z0003600	BEAM STRAIGHTENING	L SUM	1

\* SPECIALTY  
ITEM

DESIGNED	M.H.
CHECKED	P.B.
DRAWN	M.H.
CHECKED	P.B.

SUMMARY OF QUANTITIES	
US ROUTE 20 OVER ILLINOIS ROUTE 2 FAP ROUTE 301 (US20), SECTION (3)BIM-1 WINNEBAGO COUNTY STATION 455+34.50 STRUCTURE NO. 101-0055 & 101-0056	
SCALE: NONE	DATE: May, 2008
Soodan	Soodan & Associates, Inc. 100 North LaSalle Street, Suite 1800 Chicago, Illinois 60602

REV.

STATE OF ILLINOIS  
DEPARTMENT OF TRANSPORTATION

ROUTE NO.	SECTION	COUNTY	TOTAL SHEETS	SHEET NO.	SHEET NO. 1 3 SHEETS
U.S. 20	(3)BM-1	WINNEBAGO	13	3	
FED. ROAD DIST. NO. 7	ILLINOIS	FED. AID PROJECT-	CONTRACT # 64E16		

**GENERAL NOTES**

Plan dimensions and details relative to existing plans are subject to routine variations. The Contractor shall field verify existing dimensions and details affecting new construction and make necessary approved adjustments prior to construction or ordering of materials. Such variations shall not be cause for additional compensation for a change in scope of the work, however, the Contractor will be paid for the quantity actually furnished based upon the unit price bid for the work.

Work on this project will be in progress at the same time as work on the US over Prairie and Simpson Road project and IL 2 south of US 20 Permit. Work on these projects shall be scheduled to keep interference between all the projects to a minimum. The contractors shall inform each other of progress of the projects and give fair warning to the other contractors when a problem might be encountered.

The final top 100 mm (four inches) of soil in any right-of-way area disturbed by the Contractor must be capable of supporting vegetation. The soil must be from the A horizon (zero to 2' deep) of soil profiles of local soils.

All Borrow/Waste/Use sites must be approved by the Department prior to removing any material from the project or initiating any earthmoving activities, including temporary stockpiling outside the limits of construction.

The Contractor shall seed all disturbed areas within the project limits. Seeding Class 4 or 2A shall be used, except in front of properties where the grass will be mowed, then use Seeding, Class 1. Class 2A shall be used on front slopes and ditch bottoms. Class 4 shall be used behind Type A gutter, on all backslopes and areas behind the backslope, and beyond the toe of front slope on fill sections without ditches. This work will be included in the contract unit price per Ton for HOT-MIX ASPHALT SURFACE COURSE, MIX "E", N90.

Fertilizer shall be applied to all disturbed areas and incorporated into the seedbed prior to seeding or placement of sod at the rate specified in Sections 250 and 252 of the Standard Specifications. This work shall be included in the cost of HOT-MIX ASPHALT SURFACE COURSE, MIX "E", N90.

Mulch Method II shall be applied over all seeded areas. This shall be included in the cost of the HOT-MIX ASPHALT SURFACE COURSE, MIX "E", N90.

The following Mixture Requirements are applicable for this project:

Mixture Uses(s):	Surface	Level Binder	Top Shoulder
PG:	SBS PG 70-22	SBS PG 70-22	PG 58-22
Design Air Voids	4.0 @ N90	4.0 @ N90	3 @ N50
Mixture Composition (Gradation Mixture)	IL 9.5 or 12.5	IL 9.5	IL 9.5 or 12.5
Friction Aggregate	E	N/A	C
20 Year ESAL	112 lbs/sy/in		112 lbs/sy/in

Install rumble strips in all shoulders in accordance with State Standard 642001. Rumble Strips shall be placed on shoulders on both sides of the pavement.

Any and all milled surfaces shall be resurfaced within 5 calendar days of being milled.

A contingency quantity of 125 square yards for temporary ramp has been included to be used as directed by the engineer.

The Contractor will be required to furnish 140 mm (5 1/2") high brass stencils as approved by the Engineer and install stationing at 250' intervals. Stationing shall be placed on both lanes of 2-lane highways and on the outside lanes in both directions on 4-lane highways. The stations shall be placed 150 mm (6") inside the pavement marking edge so they can be read from the shoulder. This work will be included in the cost of the final pavement surface.

To help avoid excess drop offs at the edge of pavement, the existing aggregate wedge or shoulder is to be pulled up and rolled to match the edge of pavement before placing any bituminous material. All costs associated with pulling up the shoulders shall be considered included in the contract unit price per TON for HOT MIX ASPHALT SURFACE COURSE of the type specified.

Reflective Crack Control shall be placed on the existing surface prior to any resurfacing, unless pavement is milled then it will be placed on the binder course.

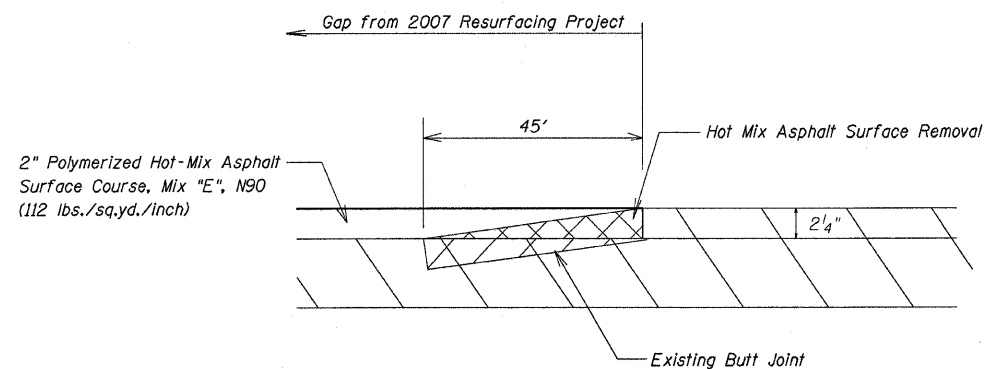
**SCOPE OF WORK**

Utilizing staged construction remove & replace existing 2" Hot-Mix Asphalt Overlay and Waterproofing Membrane. Resurface Approach Roadways. See Sheets 6 & 7 for Limits of Approach Resurfacing.

DESIGNED	M.H.
CHECKED	P.B.
DRAWN	M.H.
CHECKED	P.B.

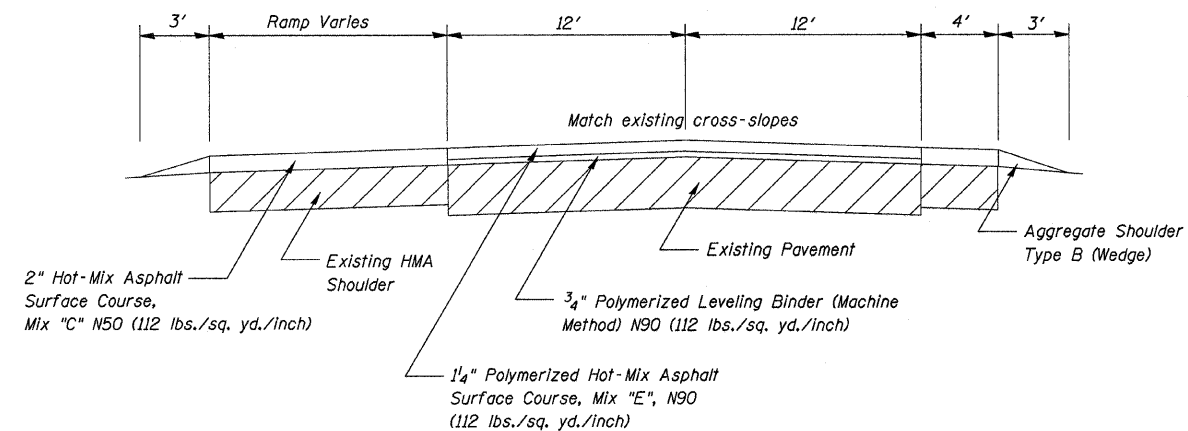
US ROUTE 20 OVER ILLINOIS ROUTE 2 FAP ROUTE 301 (US20), SECTION (3)BM-1 WINNEBAGO COUNTY STATION 455+34.50 STRUCTURE NO. 101-0055 & 101-0056	
SCALE: NONE	DATE: May, 2008
<b>Soodan</b> <small>Soodan &amp; Associates, Inc.                  100 North LaSalle Street, Suite 1800                  Chicago, Illinois 60602</small>	

US 20 Typical Taper Butt Joint

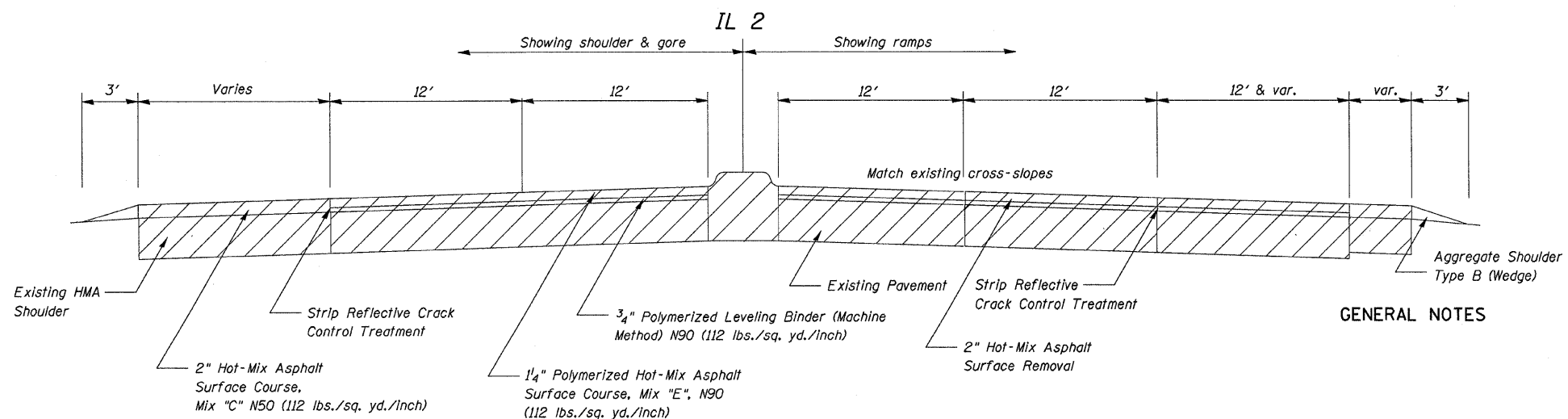
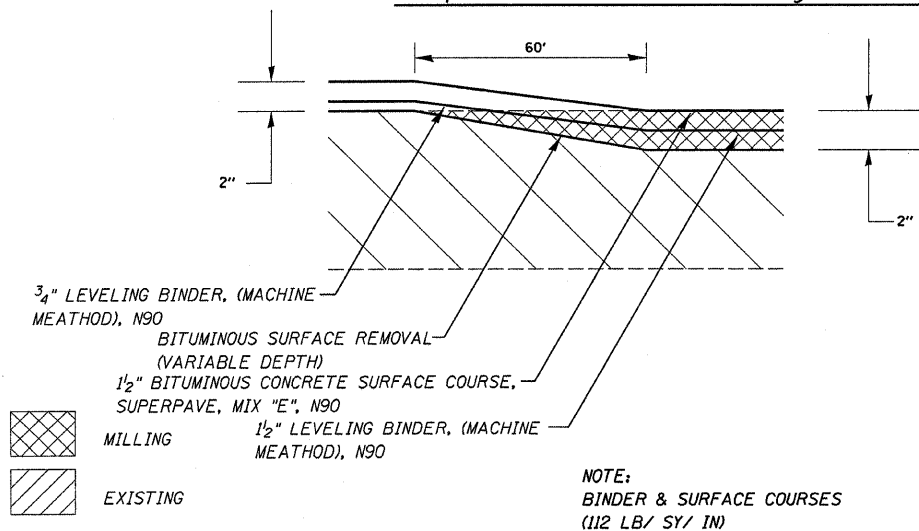


TYPICAL SECTIONS

US 20



Ramp Transition - Resurfacing to Milling



GENERAL NOTES

FILE NAME =	USER NAME = linkdj	DESIGNED -	REVISED -
D:\BR\CADD plans\Winnebago County\1810055 & 0056\03-181-0055&56-General Notes.dgn		DRAWN -	REVISED -
PLOT SCALE = 0 15/16" / IN.		CHECKED -	REVISED -
PLOT DATE = Mon Jul 28 06:22:58 2008		DATE -	REVISED -

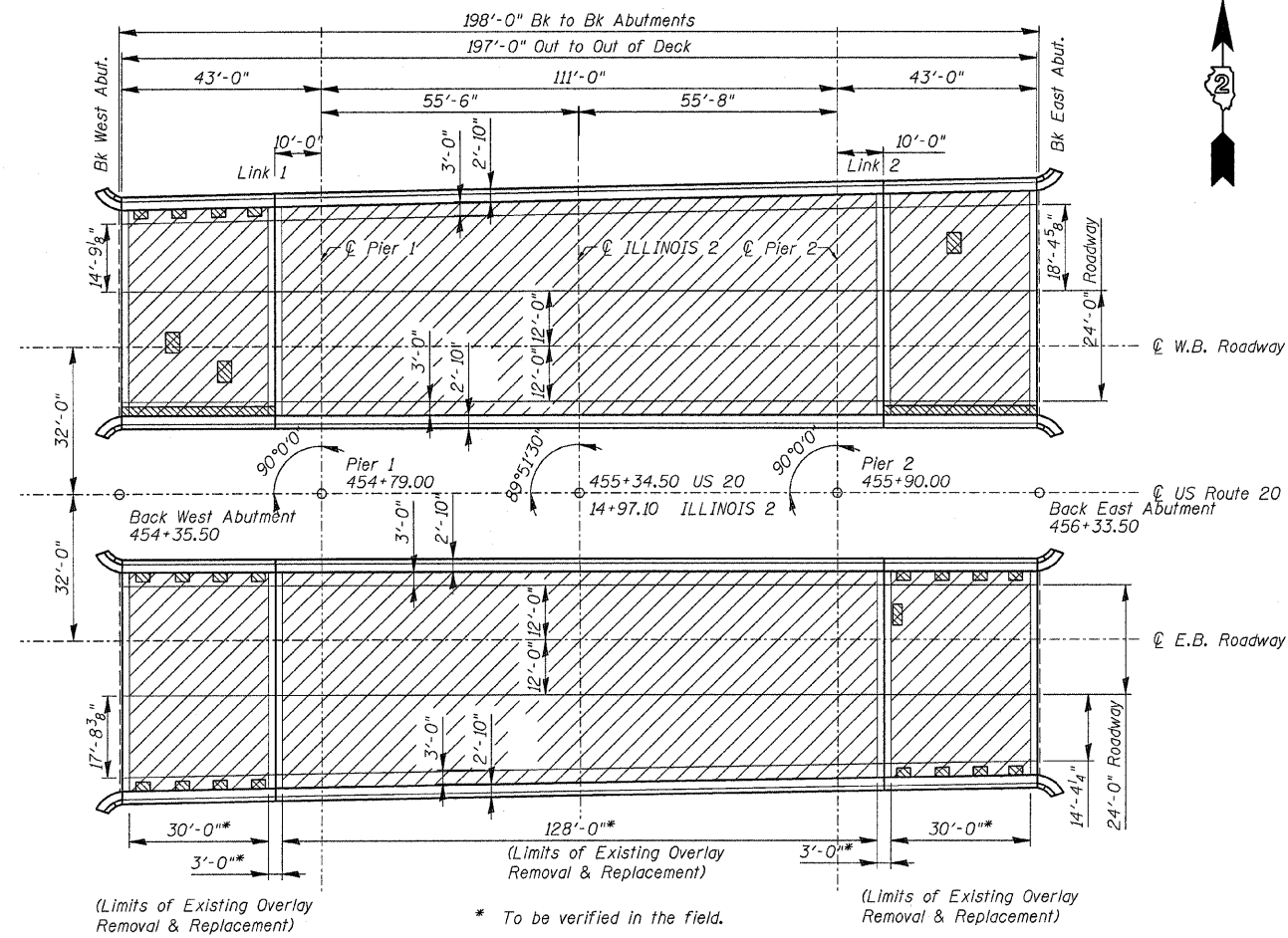
STATE OF ILLINOIS  
DEPARTMENT OF TRANSPORTATION

Typical Sections		
SCALE: _____	SHEET NO. ____ OF ____ SHEETS	STA. _____ TO STA. _____

F.A. RTE. 301	SECTION (3HB)M-1	COUNTY Winnebago	TOTAL SHEETS 13	SHEET NO. 4
FED. ROAD DIST. NO. _____ ILLINOIS FED. AID PROJECT				
CONTRACT NO. 64E16				

STATE OF ILLINOIS  
DEPARTMENT OF TRANSPORTATION

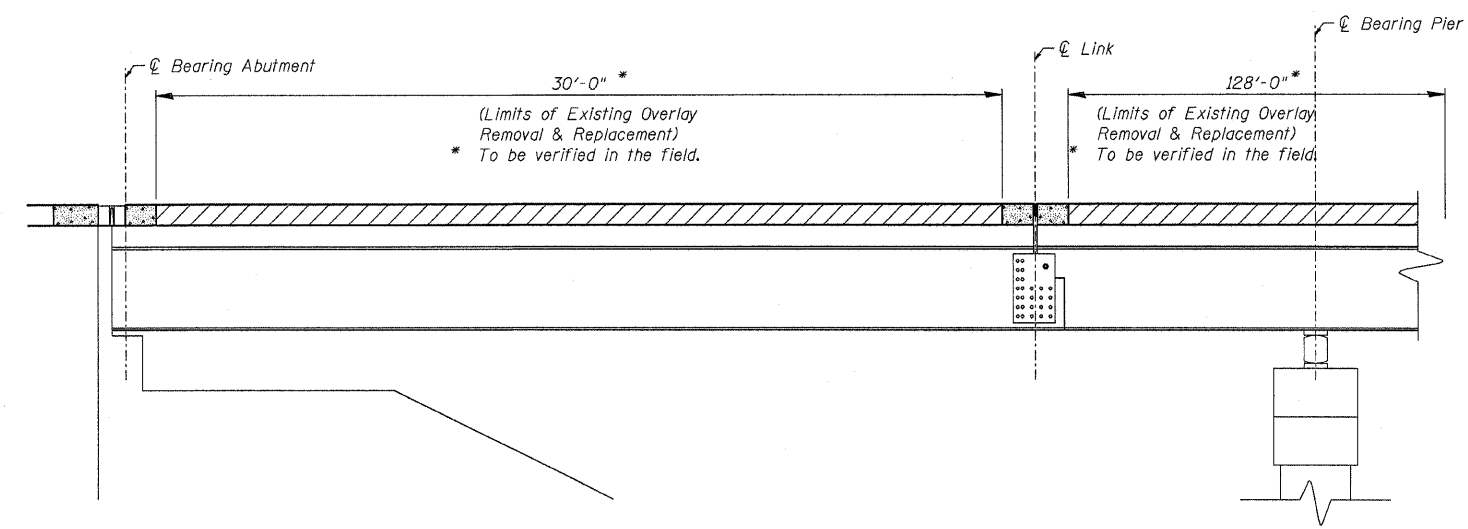
ROUTE NO.	SECTION	COUNTY	TOTAL SHEETS	SHEET NO.	SHEET NO. 2 3 SHEETS
U.S. 20	(3HB)M-1	WINNEBAGO	13	5	
FED. ROAD DIST. NO. 7	ILLINOIS	FED. AID PROJECT-	CONTRACT # 64E16		



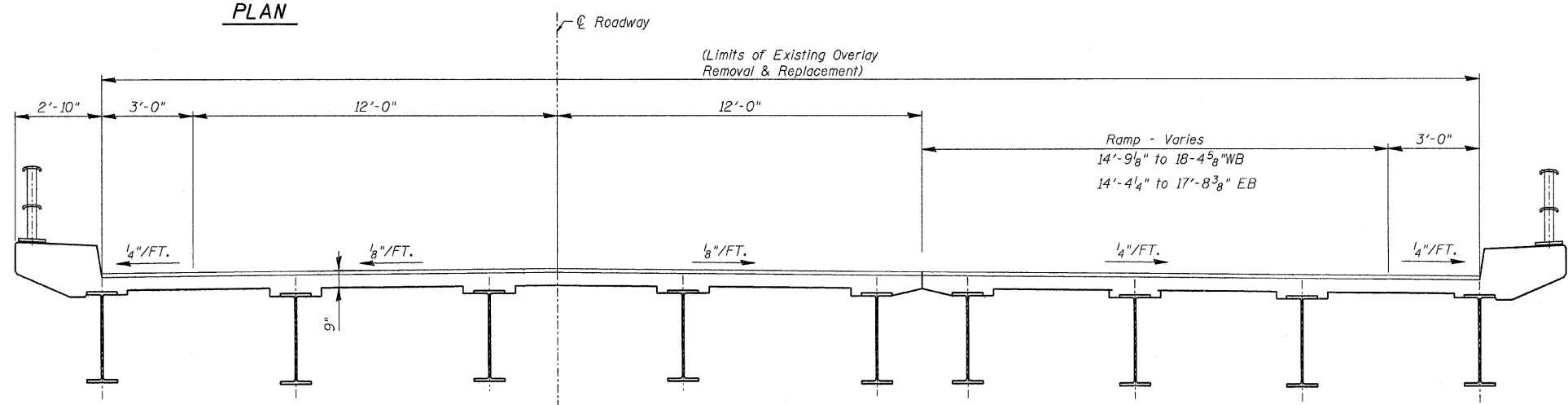
Full depth deck patching

HMA Overlay to be removed and replaced.

PLAN



SECTION THROUGH ABUTMENT AND PIER



TYPICAL CROSS SECTION

TOTAL BILL OF MATERIAL

ITEM	UNIT	QUANTITY
Hot-Mix Asphalt Surface Removal, 2"	SQ. YD.	1930
Waterproofing Membrane System	SQ. YD.	1930
Hot-Mix Asphalt Surface Course, Mix "E", N90	TON	222
Deck Slab Repair (Full Depth, Type II)	SQ. YD.	33

DESIGNED	M.H.
CHECKED	P.B.
DRAWN	C.L.
CHECKED	M.H./P.B.

EB STRUCTURE 101-0055 looking east WB STRUCTURE 101-0056 looking west  
Note: Existing HMA wearing surface shall be removed and replaced.

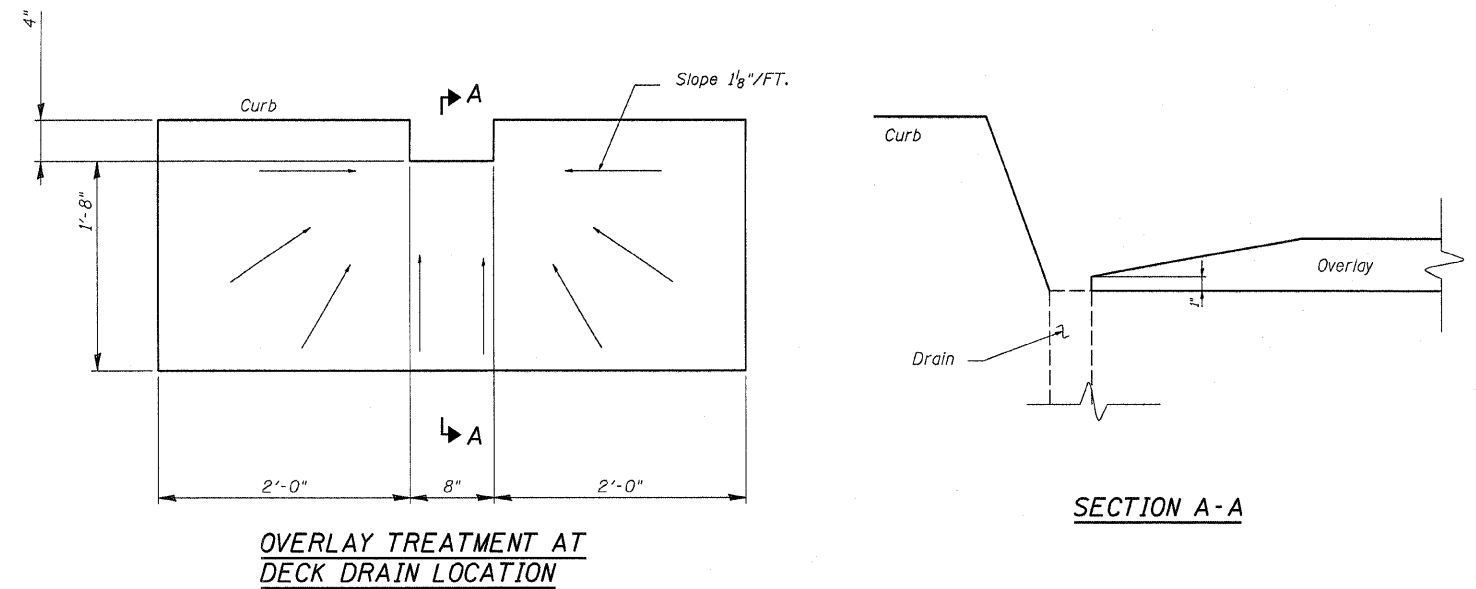
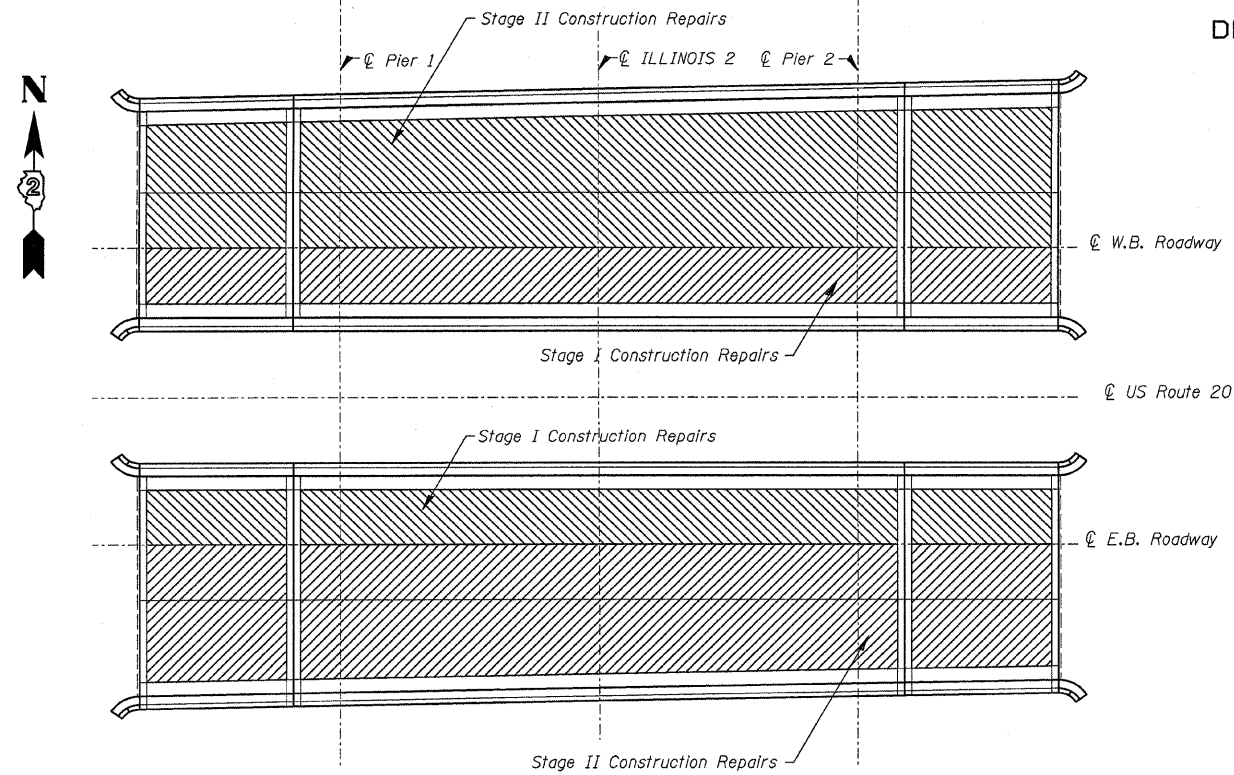
EXISTING PLAN & CROSS SECTION  
TOTAL BILL OF MATERIAL  
US ROUTE 20 OVER ILLINOIS ROUTE 2  
FAP ROUTE 301 (US20), SECTION (3HB)M-1  
WINNEBAGO COUNTY  
STATION 455+34.50  
STRUCTURE NO. 101-0055 & 101-0056

SCALE: NONE DATE: May, 2008

**Soodan**  
Soodan & Associates, Inc.  
100 North LaSalle Street, Suite 1800  
Chicago, Illinois 60602

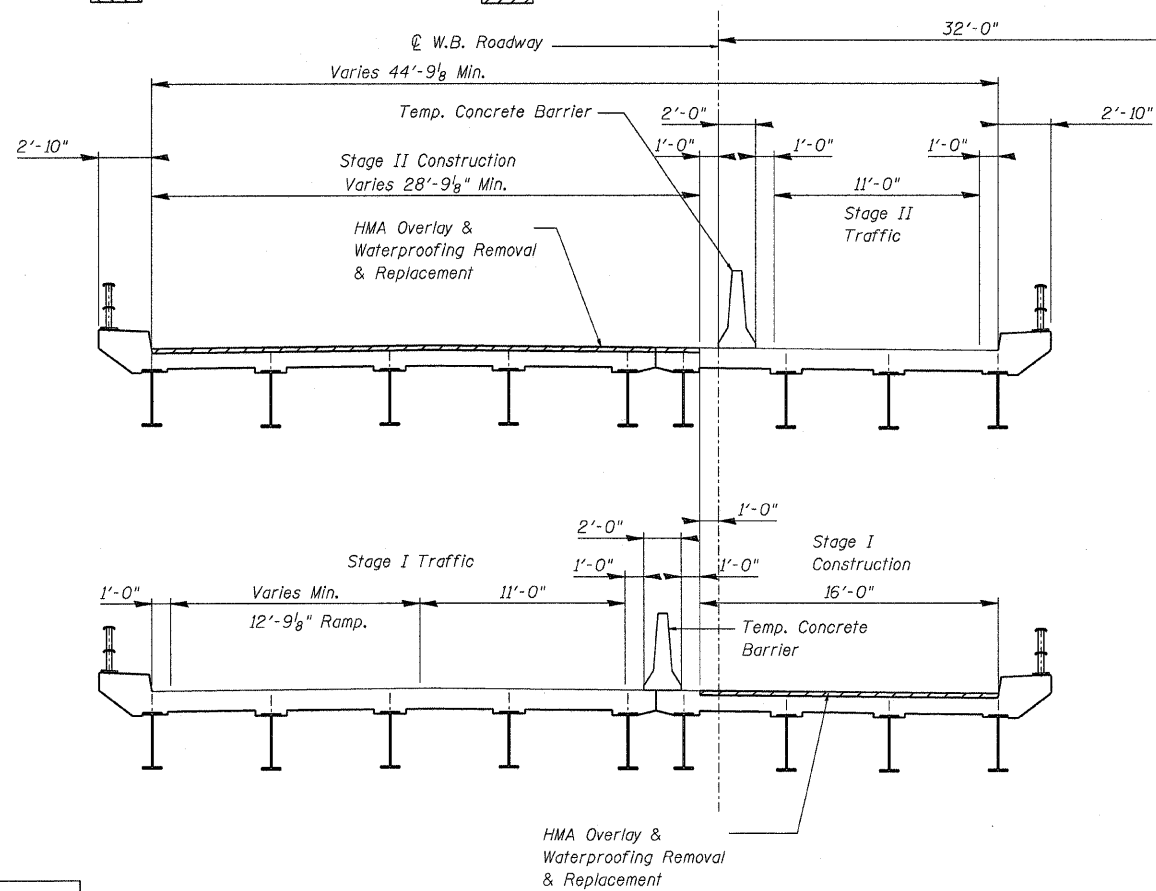
STATE OF ILLINOIS  
DEPARTMENT OF TRANSPORTATION

ROUTE NO.	SECTION	COUNTY	TOTAL SHEETS	SHEET NO.	SHEET NO. 3 3 SHEETS
U.S. 20	(3)BM-1	WINNEBAGO	13	6	
FED. ROAD DIST. NO. 7		ILLINOIS FED. AID PROJECT	CONTRACT # 64E16		



PLAN

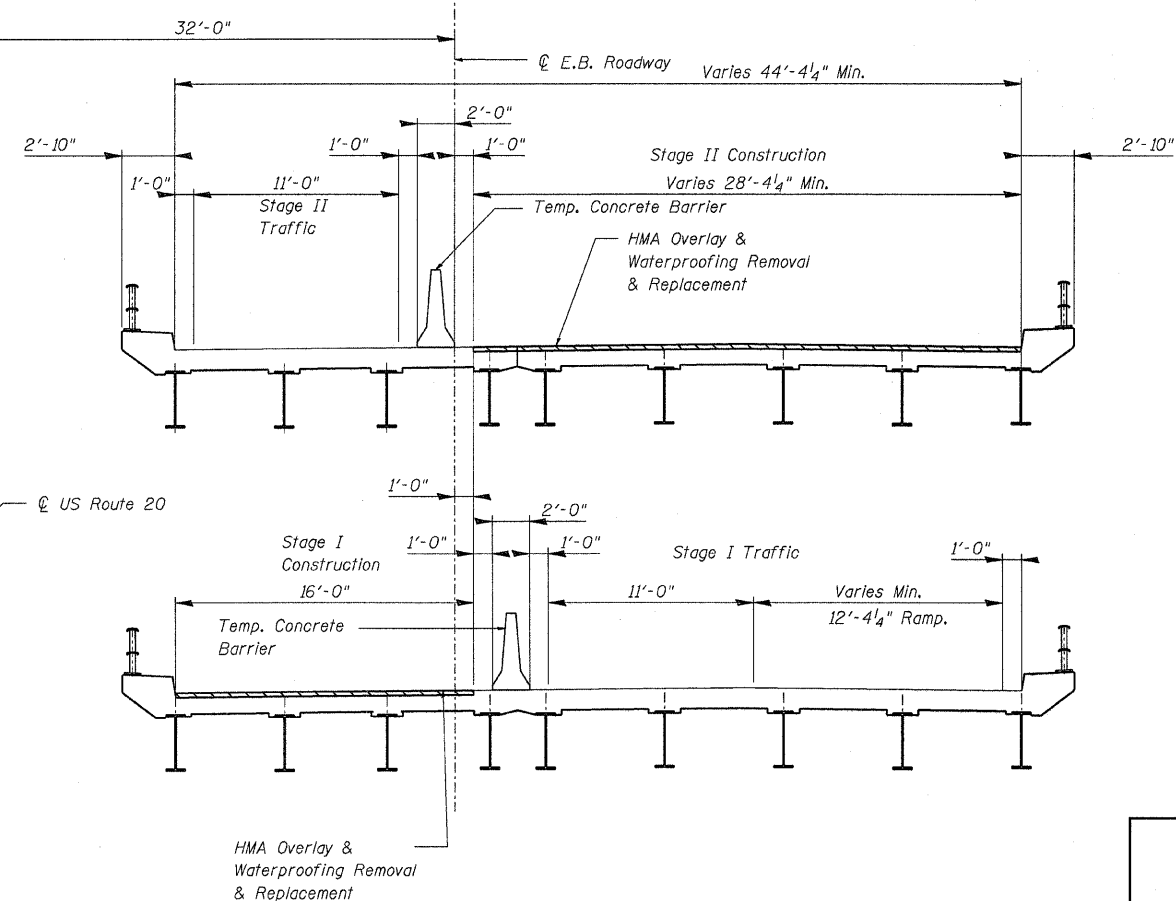
Stage I Construction Repairs  
 Stage II Construction Repairs



WB Structure (looking East)

DESIGNED	M.H.
CHECKED	P.B.
DRAWN	C.L.
CHECKED	M.H./P.B.

CROSS SECTION



EB Structure (looking East)

STAGE CONSTRUCTION PLAN

US ROUTE 20 OVER ILLINOIS ROUTE 2  
FAP ROUTE 301 (US20), SECTION (3)BM-1  
WINNEBAGO COUNTY  
STATION 455+34.50  
STRUCTURE NO. 101-0055 & 101-0056

SCALE: NONE DATE: May, 2008  
Soodan & Associates, Inc.  
100 North LaSalle Street, Suite 1800  
Chicago, Illinois 60602

STATE OF ILLINOIS  
DEPARTMENT OF TRANSPORTATION

**GENERAL NOTES**

All structural steel shall conform to AASHTO Classification M-270 Gr. 36, unless otherwise noted.  
Fasteners shall be high strength bolts. Bolts  $\frac{7}{8}$ " $\phi$ , open holes  $\frac{15}{16}$ " $\phi$ , unless otherwise noted.

After the new beam is in its final position and/or beam straightening operations have been completed, the Engineer in the field shall check to see that the top flange is tight against the slab. If not, the Contractor shall inject epoxy between the existing concrete deck and the top flange of the beam. See Special Provision "Epoxy Injection".

Plan dimensions and details relative to existing plans are subject to routine variations. The Contractor shall field verify existing dimensions and details affecting new construction and make necessary approved adjustments prior to construction or ordering of materials. Such variations shall not be cause for additional compensation for a change in scope of the work, however, the Contractor will be paid for the quantity actually furnished based upon the unit price bid for the work.

Cost of removal and re-installation of all members necessary to complete the work as detailed on the plans and as specified in the Special Provisions shall be included with Structural Steel Repair.

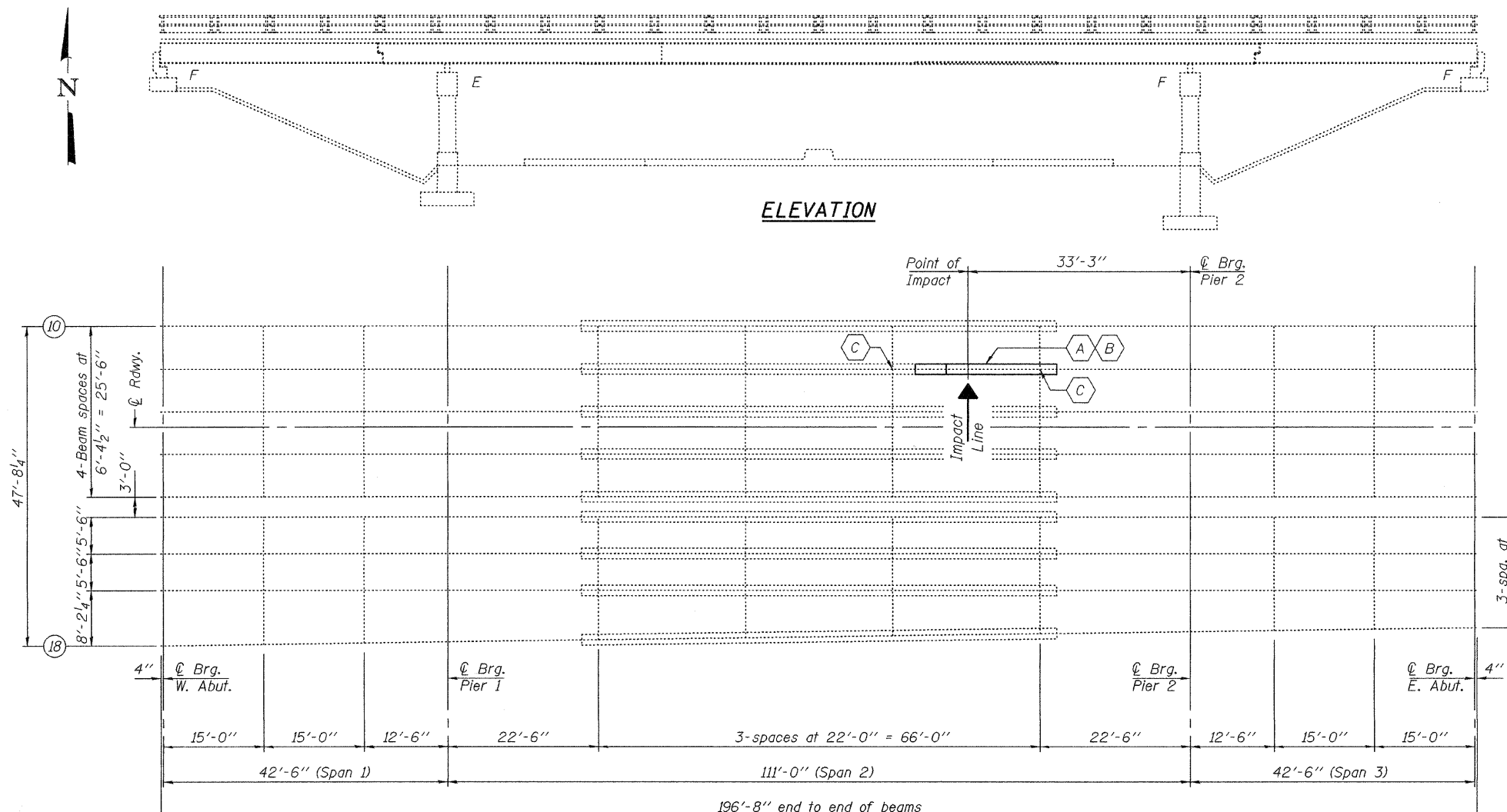
The Inorganic Zinc Rich Primer / Acrylic / Acrylic Paint System shall be used for shop and field painting of new structural steel except where otherwise noted. The color of the final finish coat for all steel surfaces shall be gray, Munsell No. 5B 7/1. See Special Provision "Cleaning and Painting New Metal Structures".

Existing structural steel that will be in contact with new structural steel shall be cleaned and painted prior to erection as required by the Special Provision "Cleaning and Painting Contact Surface Areas of Existing Steel Structures".

Load carrying components designated "NTR" shall conform to the Supplemental Requirements for Notch Toughness, Zone 2.

Grind existing nicks, gouges and shallow cracks in the damaged beams as detailed. Grinding shall be done parallel to the longitudinal axis of the member. Ground surfaces shall be inspected for cracks using dye penetrant or magnetic particle testing prior to initiating any beam straightening operations. Any cracks that cannot be removed by grinding approximately  $\frac{1}{4}$ " deep shall be identified and reported to the Bureau of Bridges and Structures for further disposition. Ground surfaces shall be spot cleaned and painted with an aluminum epoxy mastic primer followed by a finish coat to match the color of the existing beam. Cost of grinding, testing and spot painting included with Beam Straightening.

The existing structural steel coating contains lead. The Contractor shall take appropriate precautions to deal with the presence of lead on this project. Diaphragm connection holes shall be  $\frac{15}{16}$ " $\phi$  for  $\frac{3}{4}$ " $\phi$  bolts. Two hardened washers shall be required at diaphragm connections.

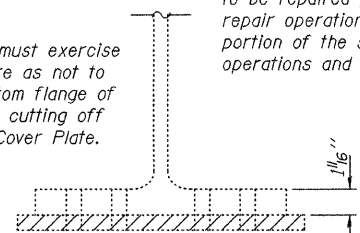


**FRAMING PLAN**

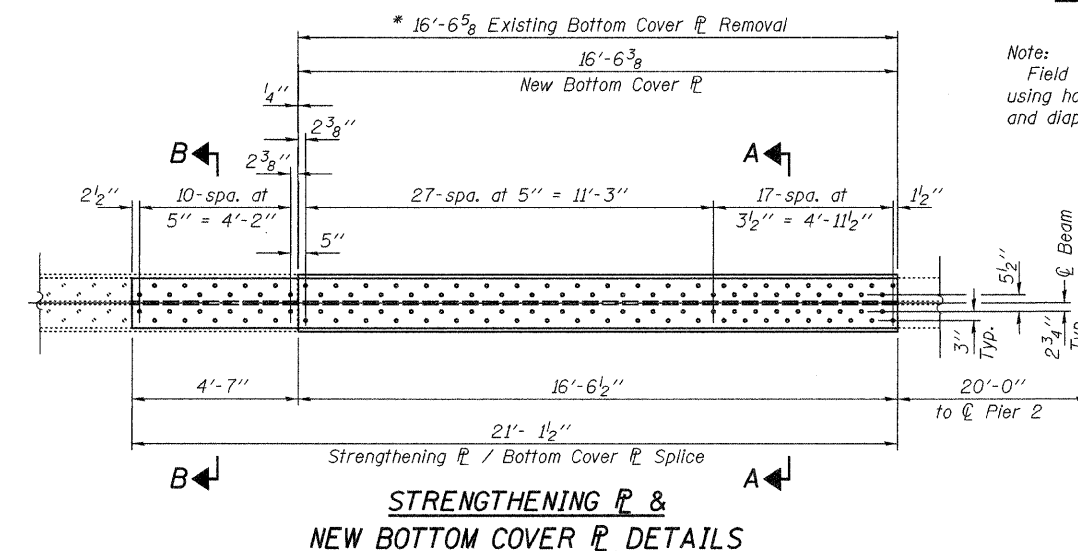
Notes:  
Beam Straightening shall be done after portion of Bottom Cover  $\bar{P}$  has been removed and prior to erecting the new Cover  $\bar{P}$  and Strengthening  $\bar{P}$ 's.  
Traffic shall be removed from the beam to be repaired prior to commencing the repair operations and shall be kept off that portion of the structure during the repair operations and until all repairs are complete.

- A - Existing Beam to be straightened & strengthened
- B - Replace portion of Bottom Cover  $\bar{P}$
- C - Replace Bottom Clip Angles on both sides of beam

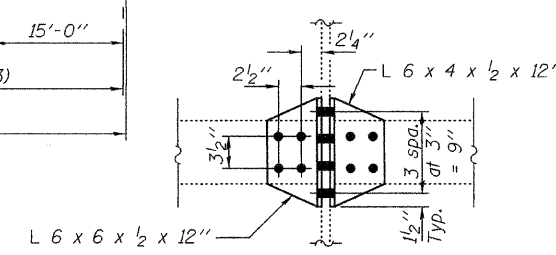
\* Contractor must exercise extreme care as not to damage bottom flange of girder while cutting off section of Cover Plate.



**SECTION A-A**  
\* (Showing Removal)

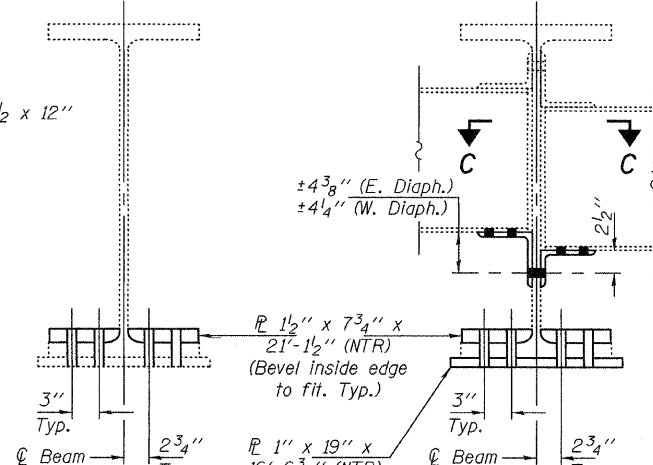


**STRENGTHENING  $\bar{P}$  & NEW BOTTOM COVER  $\bar{P}$  DETAILS**



**SECTION C-C**

Note: Field drill holes in angles using holes in existing beam and diaphragms as template.



**SECTION B-B**  
(Diaphragms & Clip Angles not shown for clarity)

**SECTION A-A**  
(Showing Repairs)

**TOTAL BILL OF MATERIAL**

ITEM	UNIT	QUANTITY
Beam Straightening	L.S.	1
Structural Steel Repair	Pounds	2960

**PLAN & ELEVATION  
US ROUTE 20**

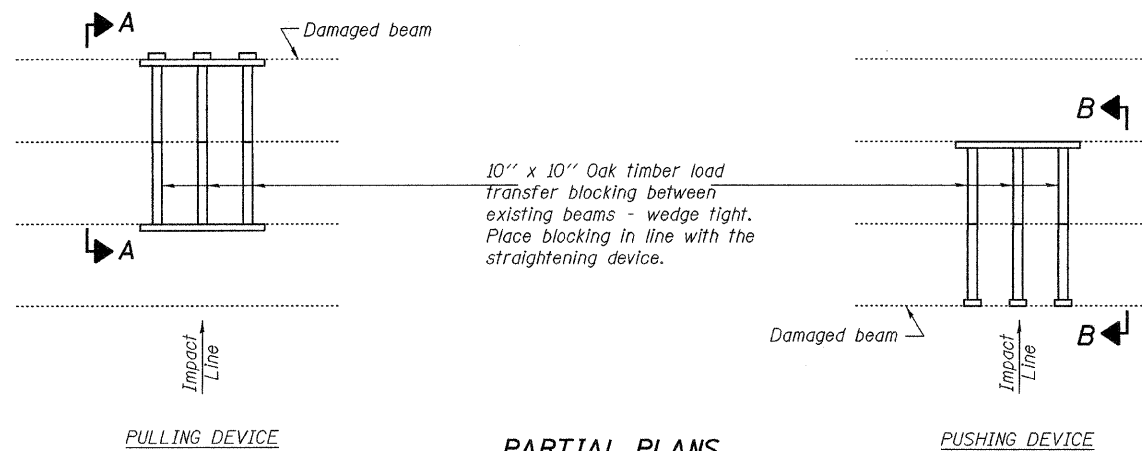
DESIGNED	<i>Adrian T. Holloway</i>	AUGUST 11, 2008
CHECKED	<i>Kyle M. Steffen</i>	EXAMINED <i>Robert E. Johnson</i>
DRAWN	Kyle M. Steffen	PASSED <i>Robert E. Johnson</i>
CHECKED	MS	



Expires: November 30, 2008

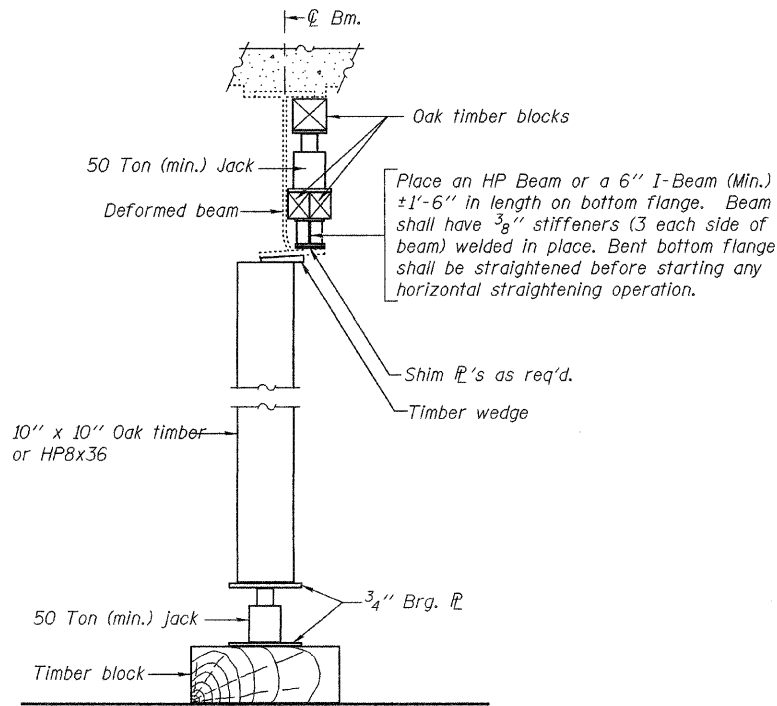
SHEET NO. 1	F.A. RTE. 301	SECTION (3HB & 3HB-2)M	COUNTY WINNEBAGO	TOTAL SHEETS 13	SHEET NO. 6A
2 SHEETS	SN 101-0056		CONTRACT NO. 64E16		
FED. ROAD DIST. NO.		ILLINOIS	FED. AID PROJECT		

STATE OF ILLINOIS  
DEPARTMENT OF TRANSPORTATION

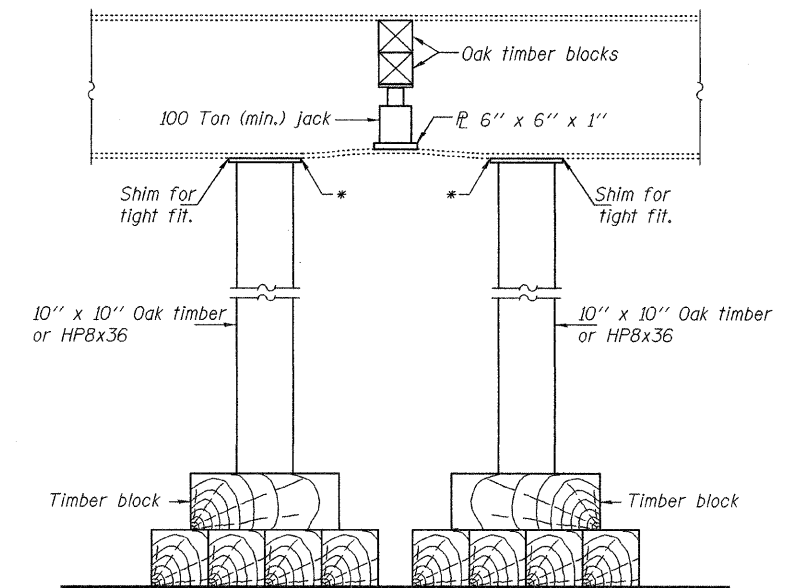


**PARTIAL PLANS**  
**SUGGESTED BEAM STRAIGHTENING METHODS**

Straightening force shall be maintained on all load transfer blocking during beam straightening.



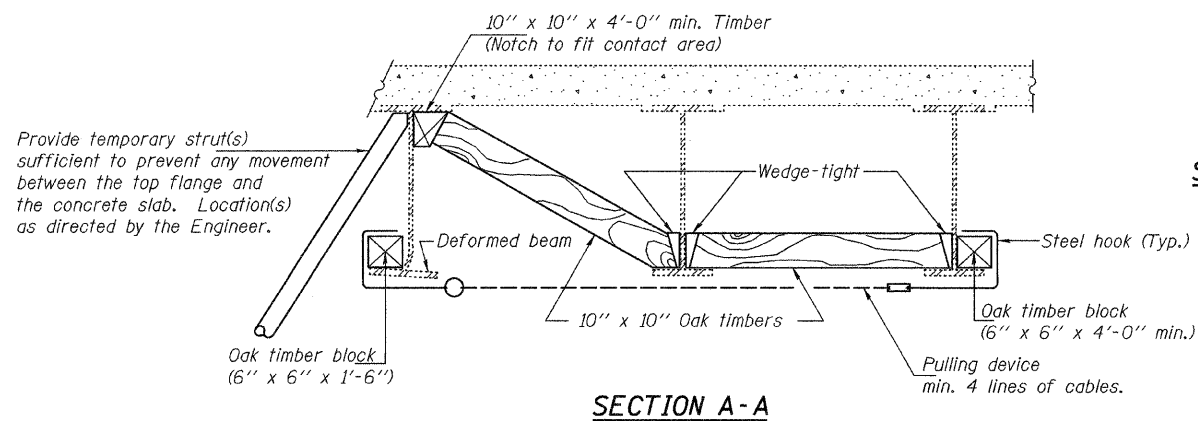
**SUGGESTED VERTICAL STRAIGHTENING DETAIL**  
(To correct flange rotation.)



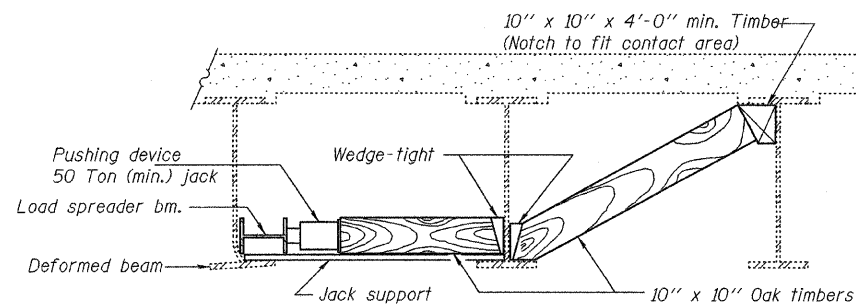
**SUGGESTED VERTICAL STRAIGHTENING DETAIL**  
(To correct localized vertical flange deformations.)

\* Edge of plate shall line up with edge of deformation.

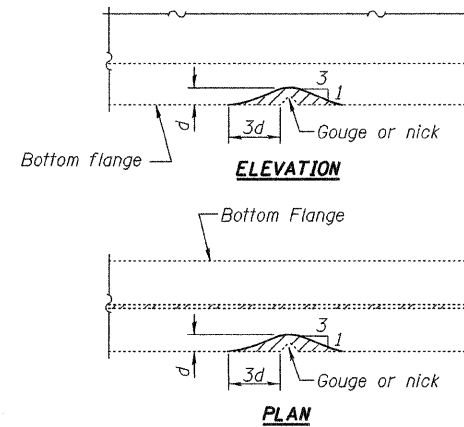
Note:  
Braces and jack assembly shall be placed on same side of web.  
Bent bottom flange shall be straightened before starting any horizontal straightening operations.



**SECTION A-A**

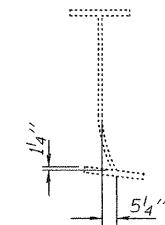


**SECTION B-B**



**GRINDING DETAIL**

Grind existing nicks, gouges and shallow cracks in the damaged beams as detailed. Ground surfaces shall be inspected for cracks using magnetic particle testing prior to initiating any beam straightening operations. Any cracks that cannot be removed by grinding approximately 1/4'' deep shall be identified and reported to the Bureau of Bridges and Structures for further disposition. Ground surfaces shall be spot cleaned and painted with an aluminum epoxy mastic primer followed by a finish coat to match the color of the existing beam. Cost of grinding, testing and spot painting included with Beam Straightening.



**EXISTING DEFORMATION TO BE STRAIGHTENED**

(Looking West)  
(Approximate max. deflections)  
Deflected length of beam to be straightened is approximately 74'-7''.

**BEAM STRAIGHTENING DETAILS**  
**US ROUTE 20**

DESIGNED	ATH
CHECKED	AJB
DRAWN	Kyle M. Steffen
CHECKED	ATH AJB

AUGUST 11, 2008  
EXAMINED *A. Carl Ramsey*  
ENGINEER OF STRUCTURAL SERVICES  
PASSED *Ralph E. Anderson*  
ENGINEER OF BRIDGES AND STRUCTURES

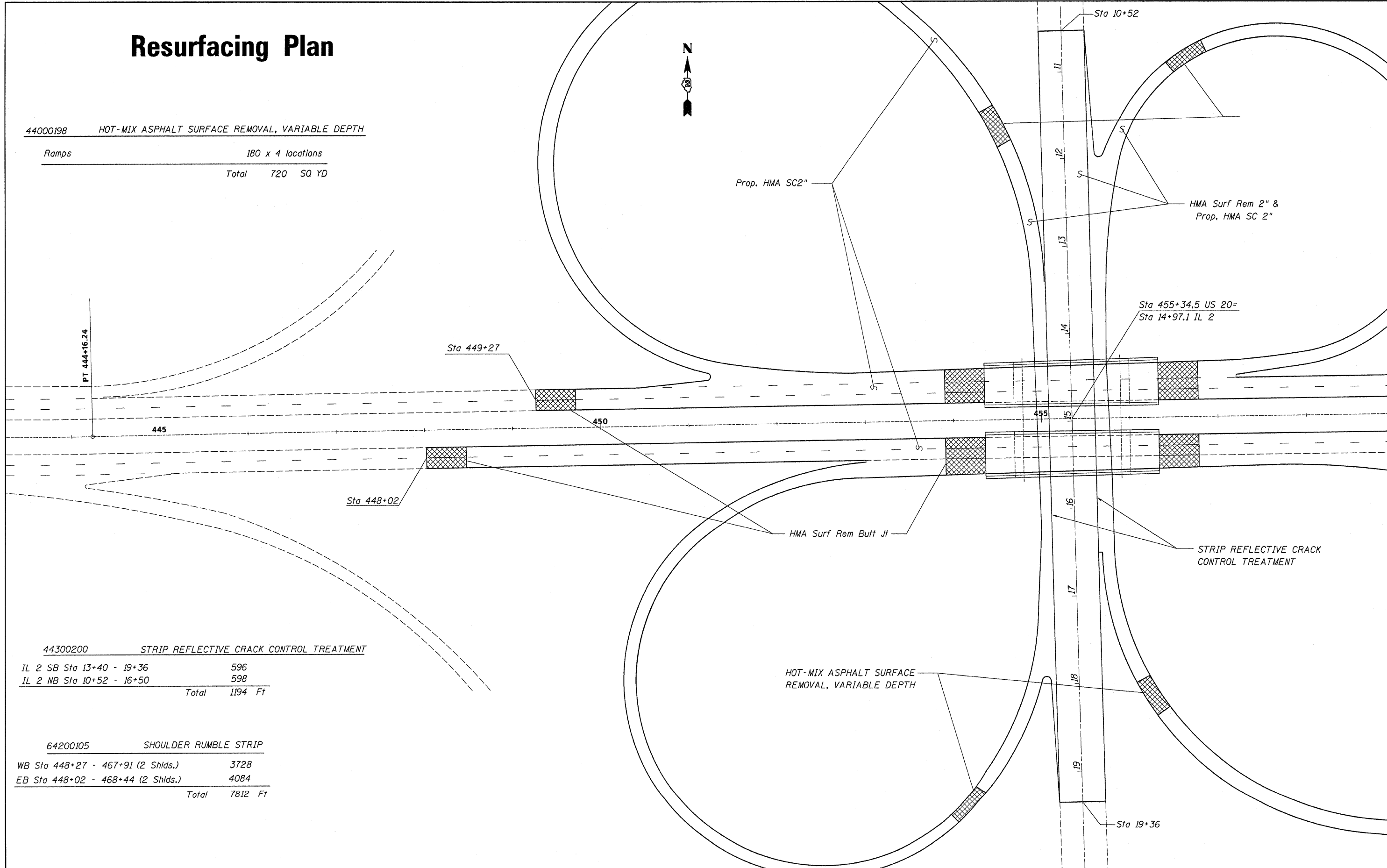
SHEET NO. 2	F.A. RTE.	SECTION	COUNTY	TOTAL SHEETS	SHEET NO.
	301	(3HB & 3HB-2)M	WINNEBAGO	13	6B
2 SHEETS	SN 101-0056		CONTRACT NO. 64E16		
FED. ROAD DIST. NO.		ILLINOIS	FED. AID PROJECT		



# Resurfacing Plan

44000198 HOT-MIX ASPHALT SURFACE REMOVAL, VARIABLE DEPTH

Ramps	180 x 4 locations
Total	720 SQ YD



44300200 STRIP REFLECTIVE CRACK CONTROL TREATMENT

IL 2 SB Sta 13+40 - 19+36	596
IL 2 NB Sta 10+52 - 16+50	598
Total	1194 Ft

64200105 SHOULDER RUMBLE STRIP

WB Sta 448+27 - 467+91 (2 Shlds.)	3728
EB Sta 448+02 - 468+44 (2 Shlds.)	4084
Total	7812 Ft

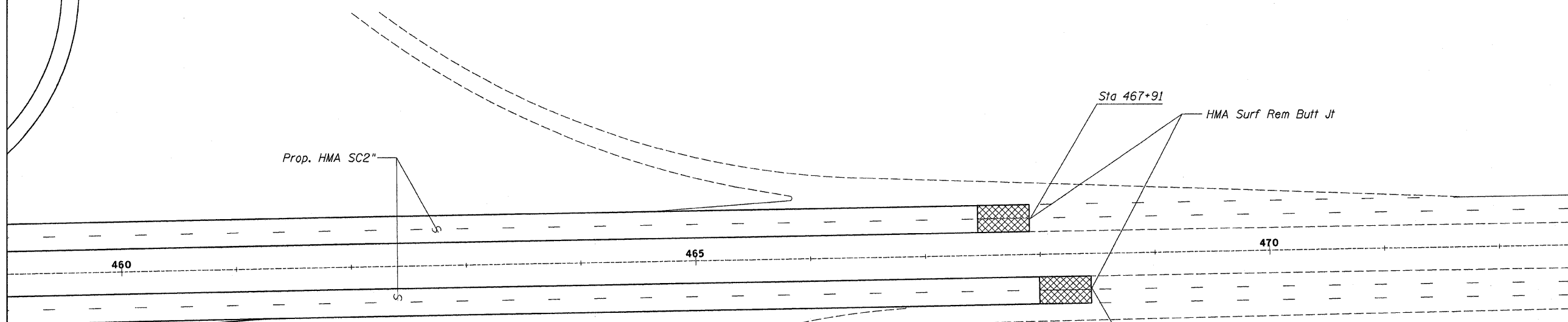
FILE NAME =	USER NAME = llnkdj	DESIGNED -	REVISED -
O:\BRYCADD plans\Winnebago County\10102005 & 0056\06-101-0055856-TRAFFIC CONTROL-1.dwg		DRAWN -	REVISED -
		CHECKED -	REVISED -
		DATE -	REVISED -

**STATE OF ILLINOIS  
DEPARTMENT OF TRANSPORTATION**

<b>Resurfacing Plan</b>			
SCALE:	SHEET NO.	OF	SHEETS
			STA. TO STA.

F.A.P. RTE.	SECTION	COUNTY	TOTAL SHEETS	SHEET NO.
301	(3HB)M-1	WINNEBAGO	13	7
FED. ROAD DIST. NO.			ILLINOIS FED. AID PROJECT	
			CONTRACT NO. 64E16	

# Resurfacing Plan



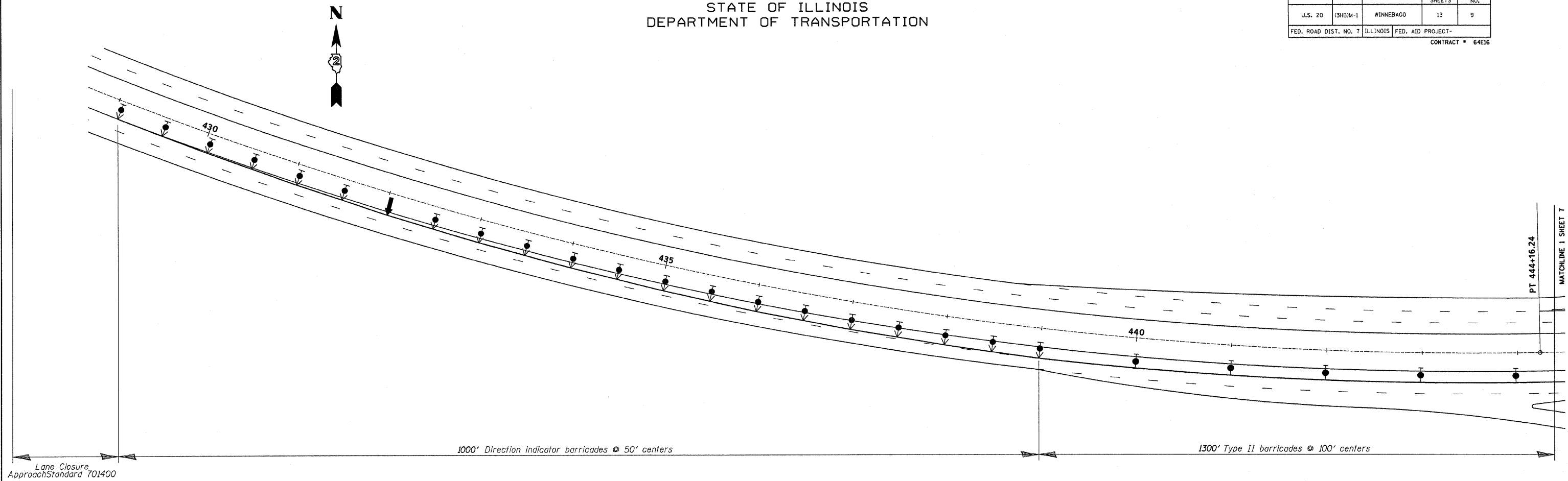
Bituminous Schedule		Length (ft.)	Pavement Width Sq Yd	Shoulder Width Sq Yd	Bit. Prime (Ton)	Agg. Prime (Ton)	LEV BIND MM N90 (Ton)	HMA SC "E" N90 (Ton)	HMA SC "C" N50 (Ton)	Agg Shlds Type B (Ton)	HMA Surf Rem Butt Jt Sq Yd	HMA Surf Rem 2" Sq Yd
<i>US 20 Mainline</i>												
Eastbound	Sta 448+02 - 454+35	633	24 1688	15 1055	1.57	2.53	94.5	118.2	118.2	36.0	610	
	Sta 456+32 - 468+44	1209	24 3224	15 2015	3.00	4.84	180.5	225.7	225.7	68.8	610	
Westbound	Sta 449+27 - 454+35	508	24 1355	15 847	1.26	2.03	75.9	94.9	94.9	28.9	195	
	Sta 456+32 - 467+91	1159	24 3091	15 1932	2.88	4.64	173.1	216.4	216.4	66.0	195	
Ramps	US 20 WB Exit	1662	12 2216	15 & var 3047	3.01	3.32	124.1	155.1	341.3	94.6		
	US 20 WB Entrance	1246	12 1662	15 & var 2285	2.26	2.49	93.1	116.3	255.9	71.0		
	US 20 EB Entrance	1497	12 1996	15 & var 2744	2.71	2.99	111.7	139.7	307.3	85.2		
	US 20 EB Exit	1542	12 2056	15 & var 2827	2.80	3.08	115.2	143.9	316.6	87.8		
<i>Bridges</i>												
Illinois 2	Sta 10+52 - 19+36	884	48 4720	* *	2.70	7.08	264.3	330.4	*	50.4		1930

\* included with ramp quantities

FILE NAME =	USER NAME = linkdj	DESIGNED -	REVISED -	<b>STATE OF ILLINOIS DEPARTMENT OF TRANSPORTATION</b>	<b>Resurfacing Plan</b>			F.A.P. RTE.	SECTION	COUNTY	TOTAL SHEETS	SHEET NO.
D:\BR\CADD plans\Winnebago County\1010045 & 0056\06-101-0055&56-TRAFFIC CONTROL-1.dwg	DRAWN -	REVISED -	301					(3HB)-1	WINNEBAGO	13	8	
PLOT SCALE = 48.0350' / IN.	CHECKED -	REVISED -	CONTRACT NO. 64E16									
PLOT DATE = Mon Jul 28 06:30:25 2008	DATE -	REVISED -	SCALE:					SHEET NO.	OF SHEETS	STA.	TO STA.	FED. ROAD DIST. NO.

STATE OF ILLINOIS  
DEPARTMENT OF TRANSPORTATION


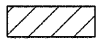
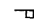



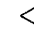


ROUTE NO.	SECTION	COUNTY	TOTAL SHEETS	SHEET NO.
U.S. 20	(3HB)M-1	WINNEBAGO	13	9
FED. ROAD DIST. NO. 7		ILLINOIS	FED. AID PROJECT-	
CONTRACT # 64E16				



SUMMARY OF QUANTITIES TRAFFIC CONTROL AND PROTECTION

	STAGE I		STAGE II		Signs	STAGE I		STAGE II		ON RAMP MERGE W4-1101-48	STAGE I		STAGE II		
	EAST BOUND	WEST BOUND	EAST BOUND	WEST BOUND		EAST BOUND	WEST BOUND	EAST BOUND	WEST BOUND		EAST BOUND	WEST BOUND	EAST BOUND	WEST BOUND	EAST BOUND
Arrow board	1	1	1	1	ROAD CONSTRUCTION AHEAD W20-1101-48	2	2	2	2			1	1		
Direction indicator barricade with steady burn monodirectional light	27	27	25	25	3.5 MILES W16-3A10-3612	2	-	2	-				2	2	
Type II barricade with steady burn monodirectional light	12	12	34	34	3.8 MILES W16-3A10-3612	-	2	-	2				2	2	
Impact attenuator	1	-	1	-	WORK ZONE PUBLIC INFORMATION SIGN	2	2	2	2						
Relocate Impact attenuator	-	1	-	1	PORTABLE CHANGEABLE MESSAGE SIGN	1	1	1	1				1	1	
Temporary concrete barrier	450'	-	375'	-	RIGHT LANE CLOSED 1 MILE W20-510-48	-	-	2	2						
Relocate Temporary concrete barrier	-	450'	-	375'	LEFT LANE CLOSED 1 MILE W20-510-48	2	2	-	-						
					WORK ZONE W2-1115(0)-3618	2	2	2	2						
					SPEED LIMIT 55 R2-1-3648	2	2	2	2						
					BEGINS W2-1113(0)-3612	2	2	2	2						
					XXX FINE MINIMUM W21-1106(0)-3618	2	2	2	2						
					RIGHT LANE CLOSED 1/2 MILE W20-510-48	-	-	2	2						
					LEFT LANE CLOSED 1/2 MILE W20-510-48	2	2	-	-						
					W4-2R(0)-48 (lane ends)	-	-	2	2						
					W4-2L(0)-48 (lane ends)	2	2	-	-						
					END WORK ZONE SPEED LIMIT G20-1103(0)-3660	2	2	2	2						

SYMBOLS

-  Arrow board
-  Work area
-  Sign
-  Direction indicator barricade with steady burn monodirectional light
-  Type II barricade, drum, or vertical barricade with steady burn monodirectional light
-  Temporary concrete barrier
-  Type C Monodirectional reflector
-  Impact attenuator
-  Drums with steady burning monodirectional light

DESIGNED	M.H.
CHECKED	P.B.
DRAWN	M.H.
CHECKED	P.B.

**TRAFFIC CONTROL AND PROTECTION**  
STAGE I  
US ROUTE 20 OVER ILLINOIS ROUTE 2  
FAP ROUTE 301 (US20), SECTION (3HB)M-1  
WINNEBAGO COUNTY  
STATION 455+34.50  
STRUCTURE NO. 101-0055 & 101-0056

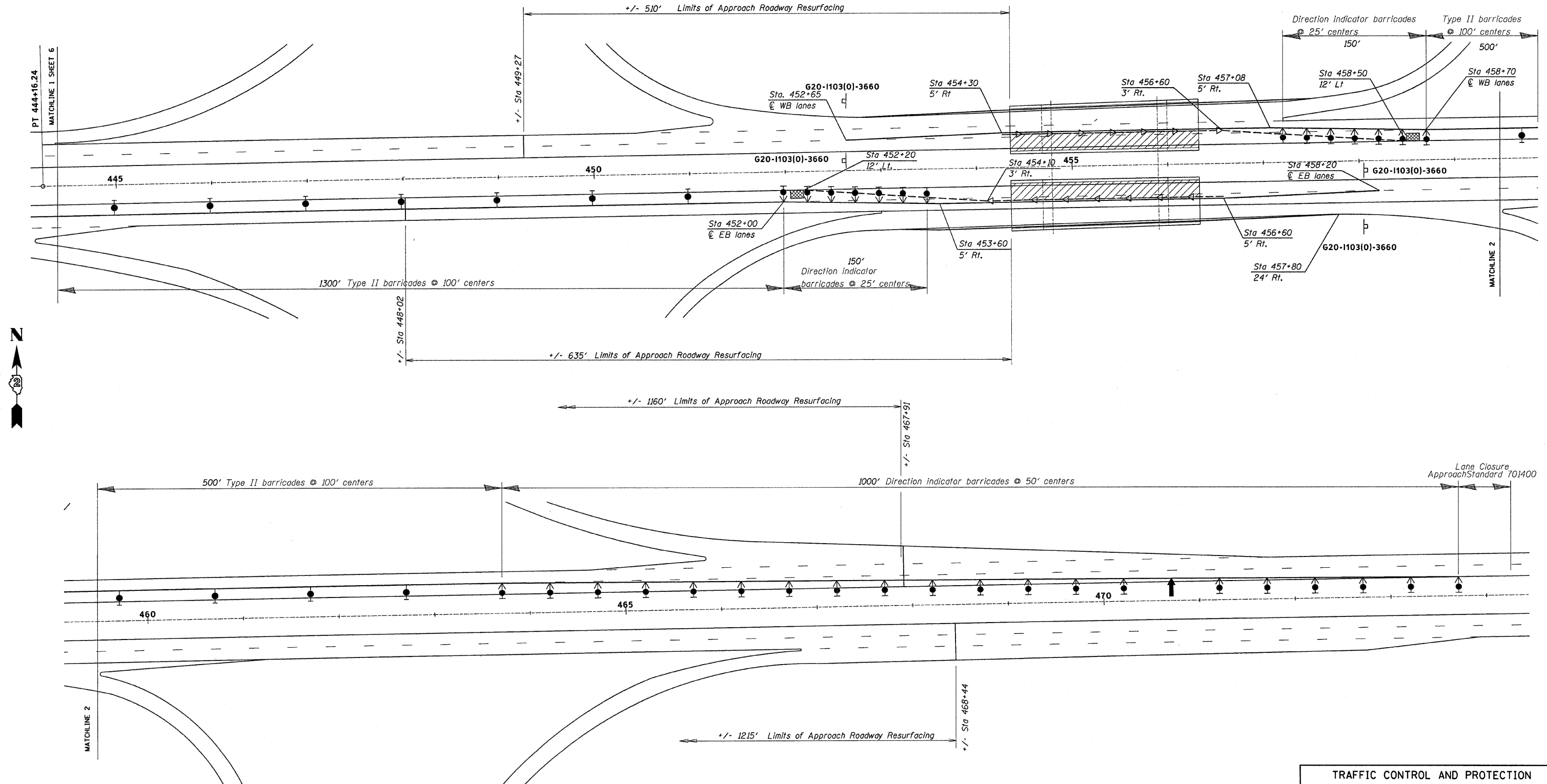
SCALE: 1" = 50'      DATE: May, 2008

**Soodan**      Soodan & Associates, Inc.  
100 North LaSalle Street, Suite 1800  
Chicago, Illinois 60602

STATE OF ILLINOIS  
DEPARTMENT OF TRANSPORTATION

ROUTE NO.	SECTION	COUNTY	TOTAL SHEETS	SHEET NO.
U.S. 20	3HBM-1	WINNEBAGO	13	10
FED. ROAD DIST. NO. 7		ILLINOIS	FED. AID PROJECT-	

CONTRACT • 64E16



DESIGNED	M.H.
CHECKED	P.B.
DRAWN	M.H.
CHECKED	P.B.

TRAFFIC CONTROL AND PROTECTION  
STAGE I  
US ROUTE 20 OVER ILLINOIS ROUTE 2  
FAP ROUTE 301 (US20), SECTION (3HBM-1)  
WINNEBAGO COUNTY  
STATION 455+34.50  
STRUCTURE NO. 101-0055 & 101-0056

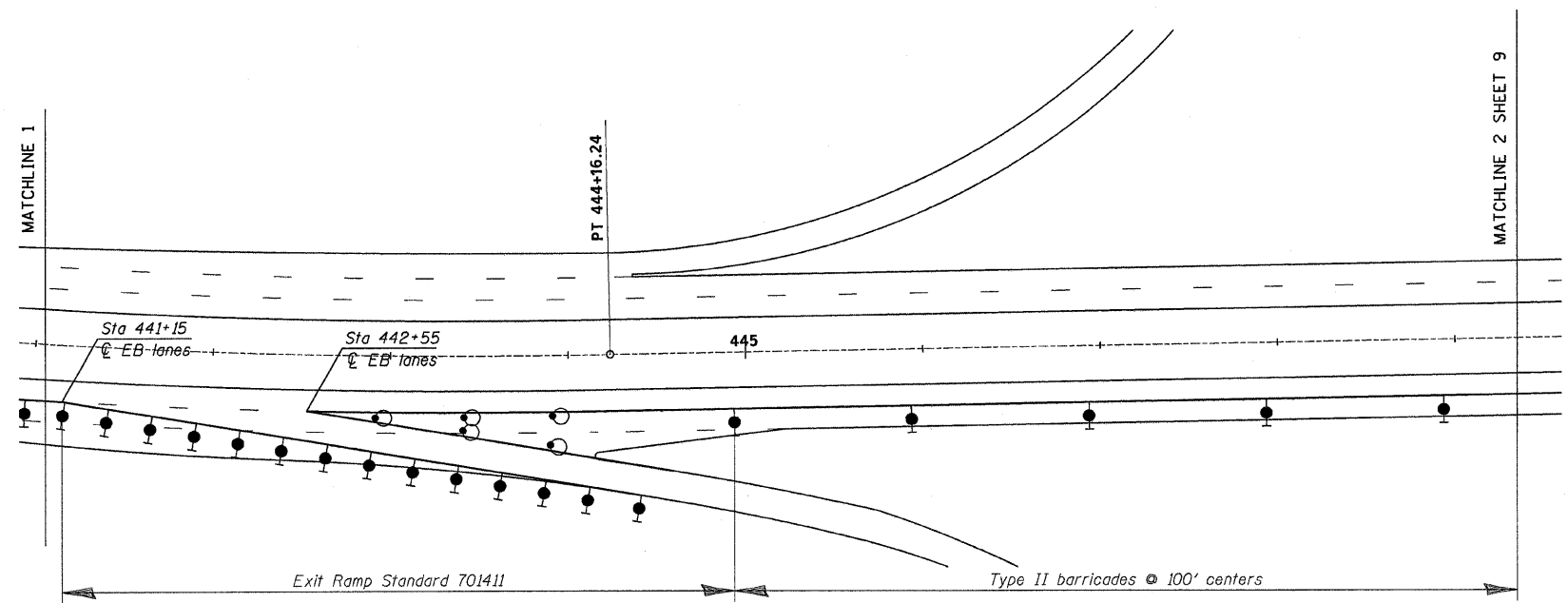
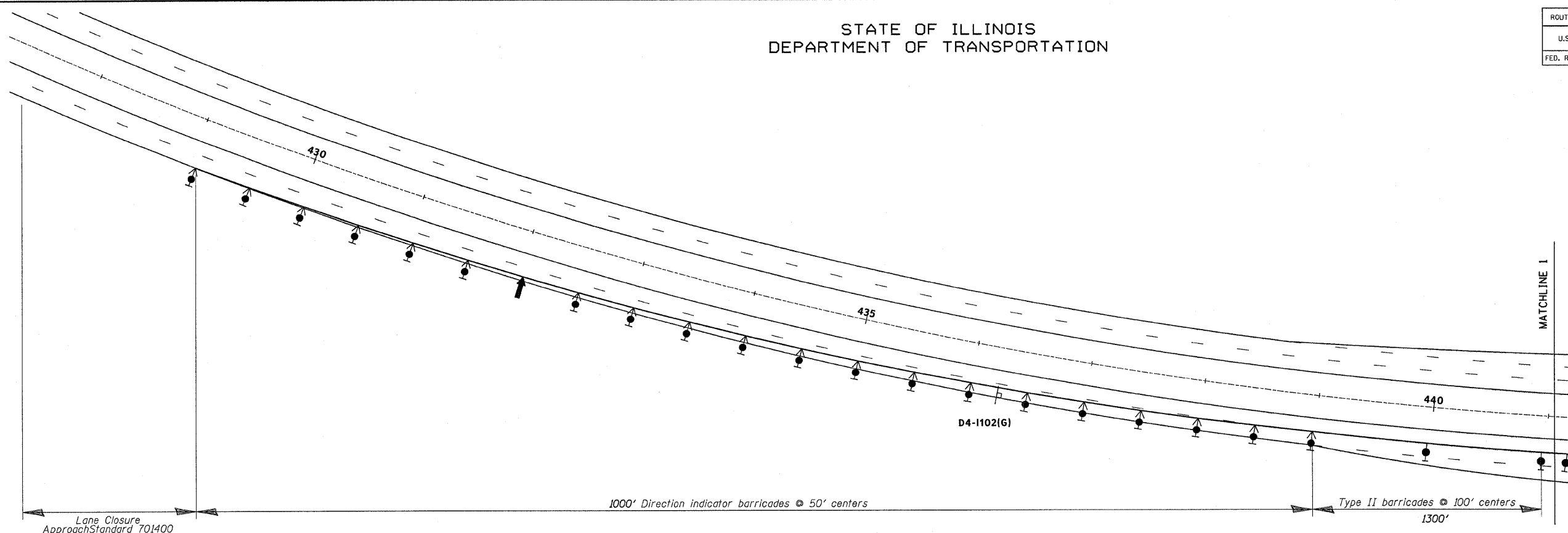
SCALE: 1" = 50' DATE: May, 2008  
Soodan & Associates, Inc.  
100 North LaSalle Street, Suite 1800  
Chicago, Illinois 60602


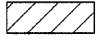
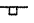



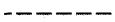


**Soodan**

STATE OF ILLINOIS  
DEPARTMENT OF TRANSPORTATION

ROUTE NO.	SECTION	COUNTY	TOTAL SHEETS	SHEET NO.
U.S. 20	(3HB)M-1	WINNEBAGO	13	11
FED. ROAD DIST. NO. 7	ILLINOIS	FED. AID PROJECT-		

CONTRACT # 64E16



- SYMBOLS**
-  Arrow board
  -  Work area
  -  Sign
  -  Direction indicator barricade with steady burn monodirectional light
  -  Type II barricade, drum, or vertical barricade with steady burn monodirectional light
  -  Drums with steady burning monodirectional light
  -  Temporary concrete barrier
  -  Type C Monodirectional reflector
  -  Impact attenuator

DESIGNED	M.H.
CHECKED	P.B.
DRAWN	M.H.
CHECKED	P.B.

**TRAFFIC CONTROL AND PROTECTION**  
**STAGE II**  
 US ROUTE 20 OVER ILLINOIS ROUTE 2  
 FAP ROUTE 301 (US20), SECTION (3HB)M-1  
 WINNEBAGO COUNTY  
 STATION 455+34.50  
 STRUCTURE NO. 101-0055 & 101-0056

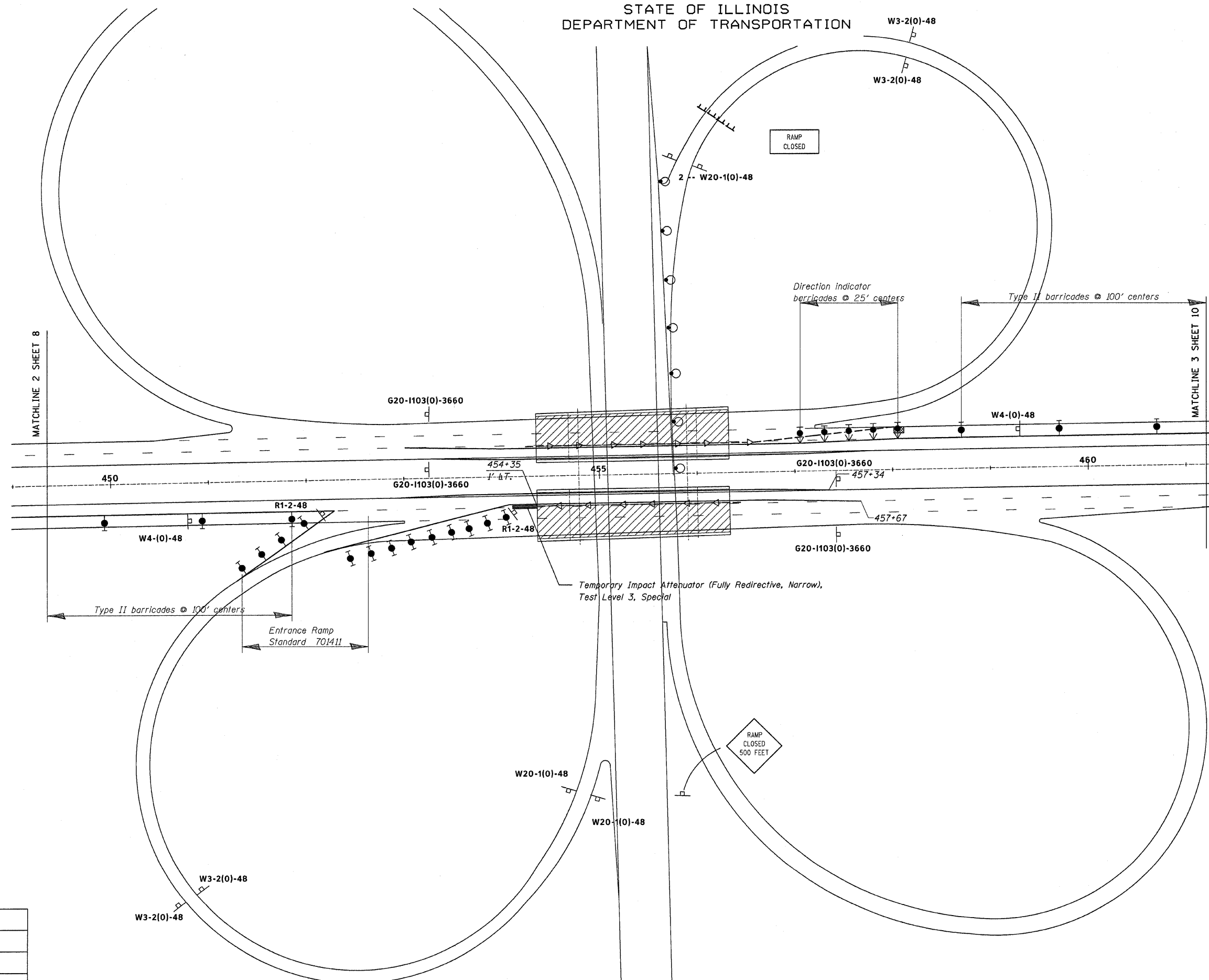
SCALE: 1" = 50'      DATE: May, 2008

**Soodan**  
 Soodan & Associates, Inc.  
 100 North LaSalle Street, Suite 1800  
 Chicago, Illinois 60602

STATE OF ILLINOIS  
DEPARTMENT OF TRANSPORTATION

ROUTE NO.	SECTION	COUNTY	TOTAL SHEETS	SHEET NO.
U.S. 20	(3HB)M-1	WINNEBAGO	13	12
FED. ROAD DIST. NO. 7		ILLINOIS	FED. AID PROJECT-	

CONTRACT \* 64E16



DESIGNED	M.H.
CHECKED	P.B.
DRAWN	M.H.
CHECKED	P.B.

TRAFFIC CONTROL AND PROTECTION  
STAGE II  
US ROUTE 20 OVER ILLINOIS ROUTE 2  
FAP ROUTE 301 (US20), SECTION (3HB)M-1  
WINNEBAGO COUNTY  
STATION 455+34.50  
STRUCTURE NO. 101-0055 & 101-0056

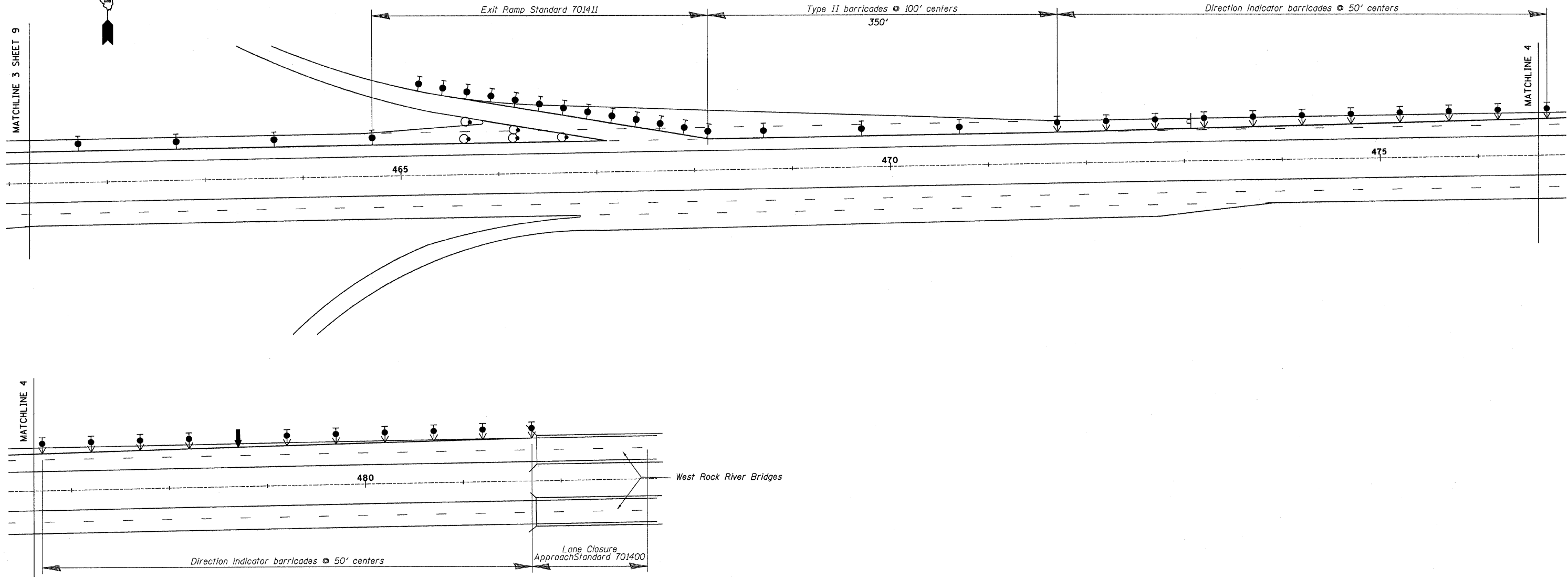
SCALE: DATE: May, 2008

**Soodan**  
Soodan & Associates, Inc.  
100 North LaSalle Street, Suite 1800  
Chicago, Illinois 60602

STATE OF ILLINOIS  
DEPARTMENT OF TRANSPORTATION

ROUTE NO.	SECTION	COUNTY	TOTAL SHEETS	SHEET NO.
U.S. 20	(3)BM-1	WINNEBAGO	13	13
FED. ROAD DIST. NO. 7		ILLINOIS	FED. AID PROJECT-	

CONTRACT • 64E16



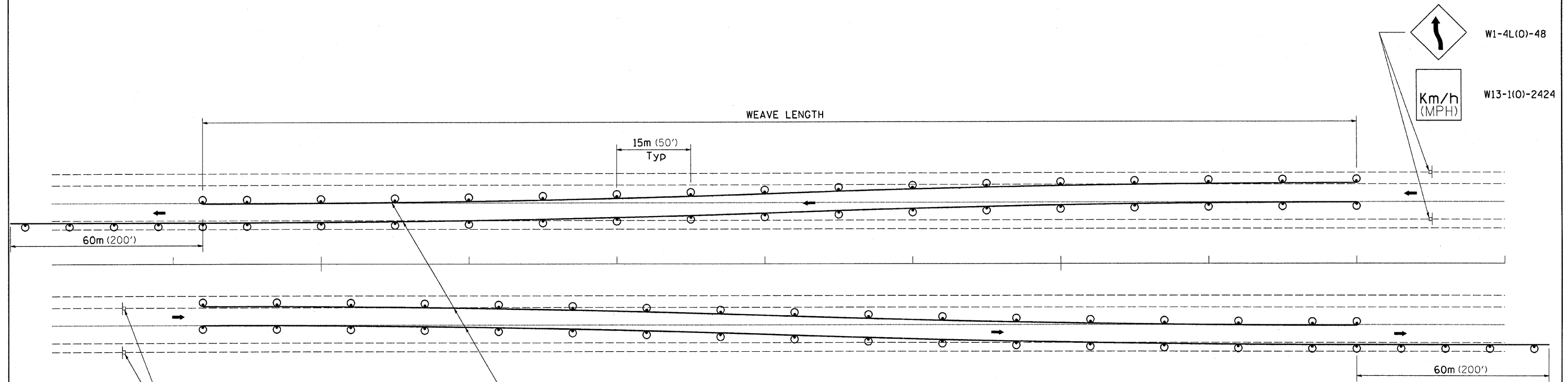
DESIGNED	M.H.
CHECKED	P.B.
DRAWN	M.H.
CHECKED	P.B.

TRAFFIC CONTROL AND PROTECTION  
STAGE II  
US ROUTE 20 OVER ILLINOIS ROUTE 2  
FAP ROUTE 301 (US20), SECTION (3)BM-1  
WINNEBAGO COUNTY  
STATION 455+34.50  
STRUCTURE NO. 101-0055 & 101-0056

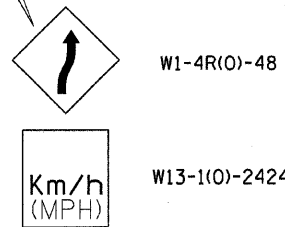
SCALE: 1" = 50'      DATE: May, 2008

**Soodan**  
Soodan & Associates, Inc.  
100 North LaSalle Street, Suite 1900  
Chicago, Illinois 60602

# TRAFFIC CONTROL TYPICAL WEAVE



Temporary Pavement Marking required if Typical Weave is used for 14 days or more.



### LEGEND

- ⊙ DRUM WITH STEADY BURN MONO-DIRECTIONAL LIGHTS
- ⊥ SIGN ON PERMANENT MOUNT

### STANDARD WEAVE CONDITIONS FOR DIFFERENT SPEED LIMITS

POSTED SPEED LIMIT	ADVISORY SPEED LIMIT	WEAVE LENGTH
110 Km/h (65 MPH)	80 Km/h (45 MPH)	240m (780 FT.)
90 Km/h (55 MPH)	60 Km/h (35 MPH)	200m (660 FT.)
80 Km/h (45 MPH)	40 Km/h (25 MPH)	165m (540 FT.)

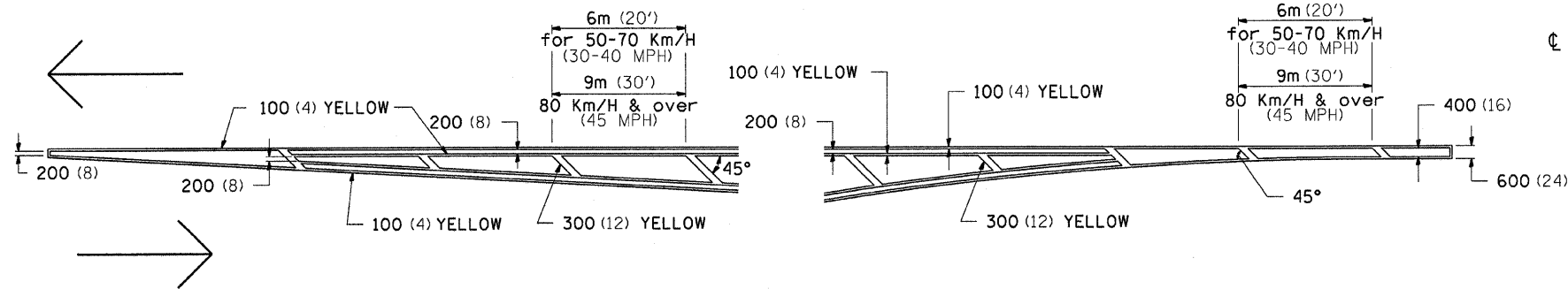
ALL DIMENSIONS ARE IN MILLIMETERS (INCHES) UNLESS OTHERWISE NOTED.

FILE NAME =	USER NAME = linkdj	DESIGNED - ---	REVISED - 5-30-91	<b>STATE OF ILLINOIS DEPARTMENT OF TRANSPORTATION</b>	<b>REGION 2 / DISTRICT 2 STANDARD</b>	F.A.P. RTE.	SECTION	COUNTY	TOTAL SHEETS	SHEET NO.
D:\BRY\CADD plans\Winnebago County\1010055 & 0056\01-101-0055&56.Coversheet.dgn	DRAWN - ---	REVISED - ---				301	(388)M-1	WINNEBAGO		13A
PLOT SCALE = 48.8349' / IN.	CHECKED - ---	REVISED - ---				CONTRACT NO. 64E16				
PLOT DATE = Mon Jul 28 06:33:14 2008	DATE - ---	REVISED - ---				FED. ROAD DIST. NO. - ILLINOIS FED. AID PROJECT				

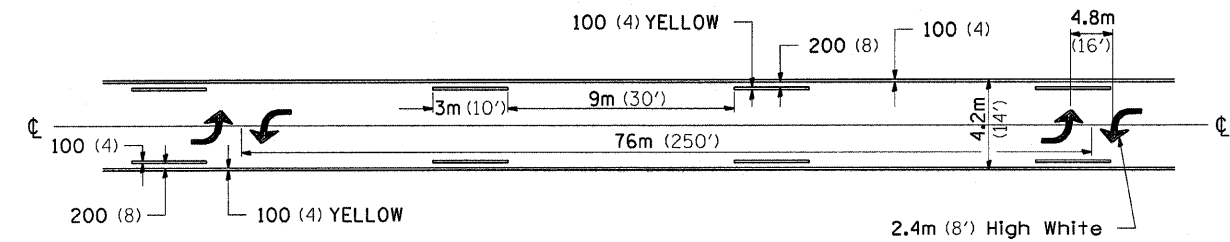


# TYPICAL PAVEMENT MARKINGS

## TYPICAL PAVEMENT MARKING FOR FLUSH MEDIAN AT LEFT TURN LANE

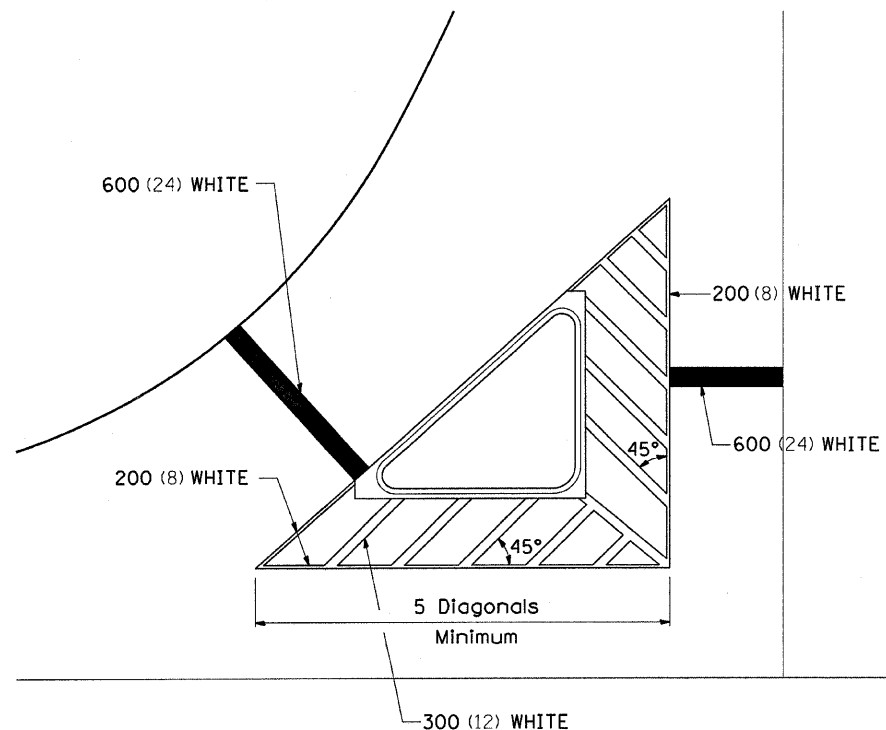


## MEDIAN PAVEMENT MARKING

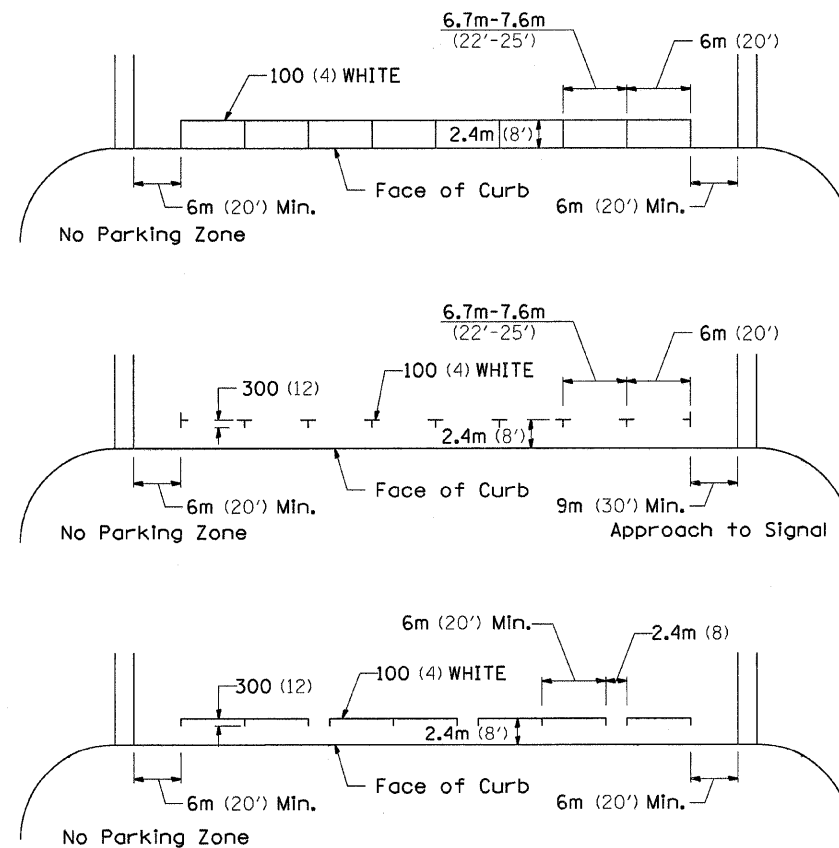


•• ALL DIMENSIONS ARE IN MILLIMETERS (INCHES) UNLESS OTHERWISE NOTED.

## TYPICAL ISLAND OFFSET SHOULDER WIDTH

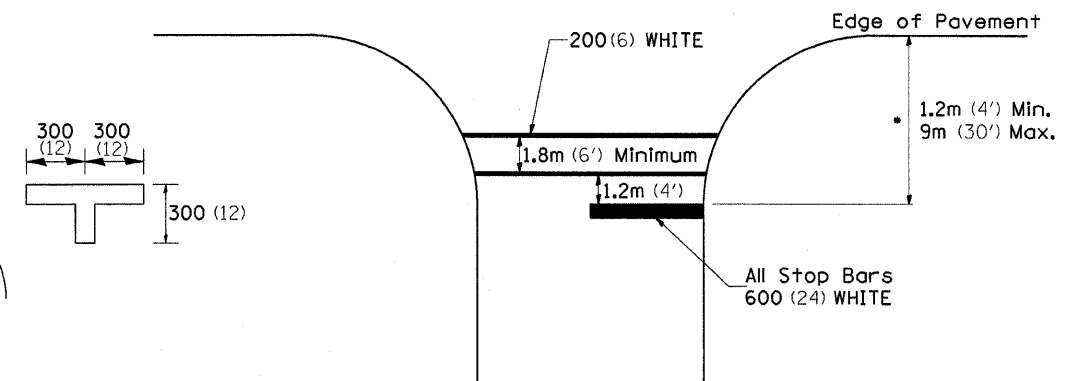


## TYPICAL PARKING SPACING



## STANDARD CROSSWALK MARKING

See Schedules for Locations



• Distance to the nearest edge of the intersecting roadway in the absence of a marked crosswalk.

FILE NAME =	USER NAME = linkdj	DESIGNED - ---	REVISED - 1-J1-08
D:\BR\CADD plans\Winnebago County\1010055 & 0056\01-101-0055&56.Coversheet.dgn		DRAWN - ---	REVISED - ---
PLOT SCALE = 48.8349' / IN.		CHECKED - ---	REVISED - ---
PLOT DATE = Mon Jul 28 06:33:41 2008		DATE - ---	REVISED - ---

STATE OF ILLINOIS  
DEPARTMENT OF TRANSPORTATION

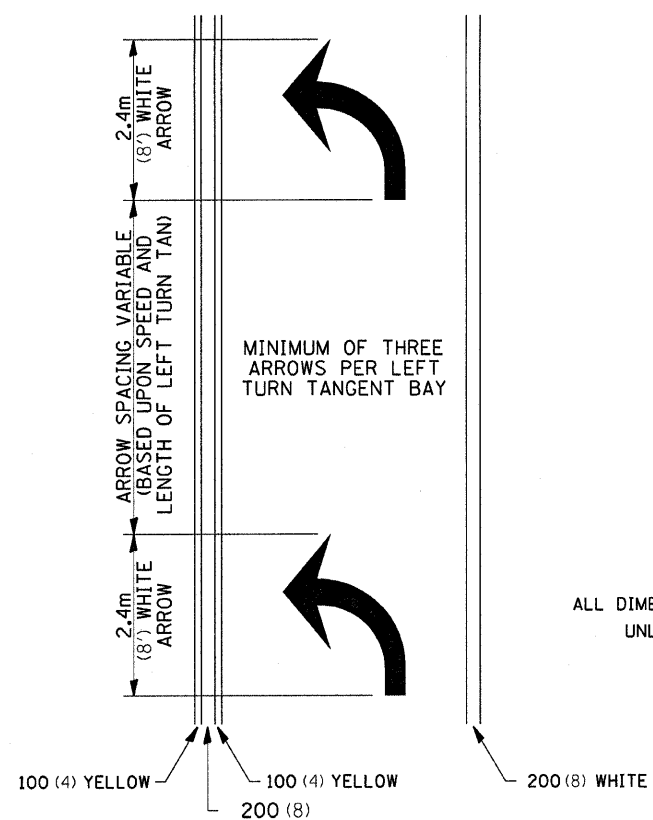
REGION 2 / DISTRICT 2 STANDARD

SCALE: \_\_\_\_\_ SHEET NO. \_\_\_ OF \_\_\_ SHEETS STA. \_\_\_\_\_ TO STA. \_\_\_\_\_

F.A. RTE.	SECTION	COUNTY	TOTAL SHEETS	SHEET NO.
301	(38)M-1	WINNEBAGO	136	136
FED. ROAD DIST. NO. - ILLINOIS FED. AID PROJECT			CONTRACT NO. 64E16	

# TYPICAL PAVEMENT MARKINGS

## ARROW LAYOUT

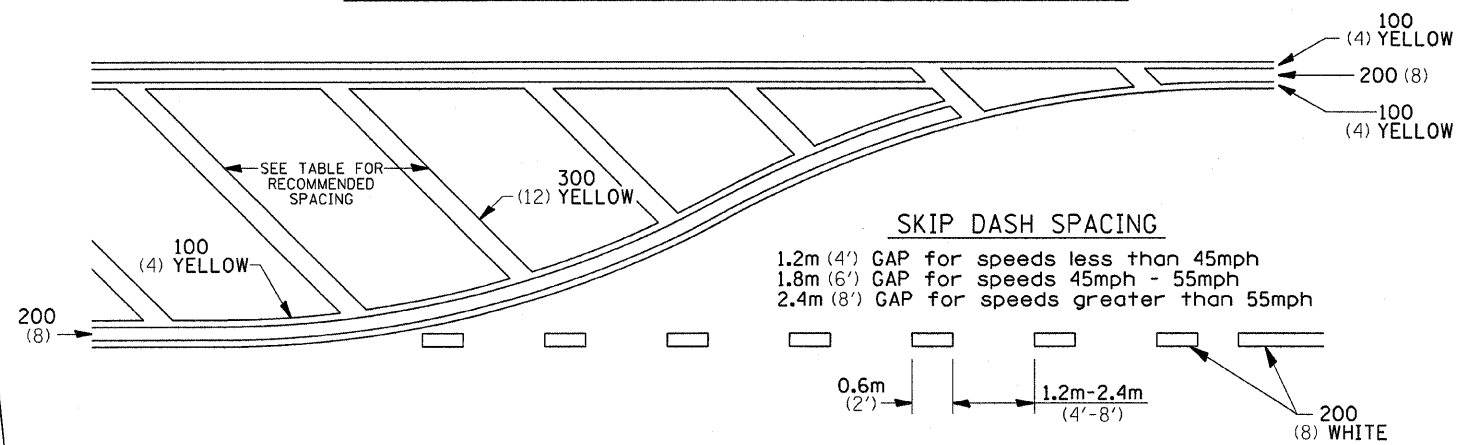


- ◀ ONE-WAY AMBER MARKER
- ◁ ONE-WAY CRYSTAL MARKER
- ◆ TWO-WAY AMBER MARKER

ALL DIMENSIONS ARE IN MILLIMETERS (INCHES) UNLESS OTHERWISE NOTED.

12.2m  
6 at (40') O.C.  
APPROACH SIDE ONLY

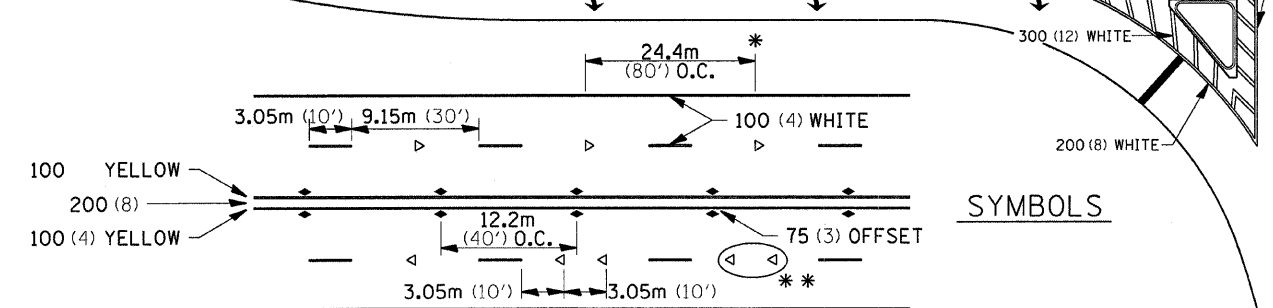
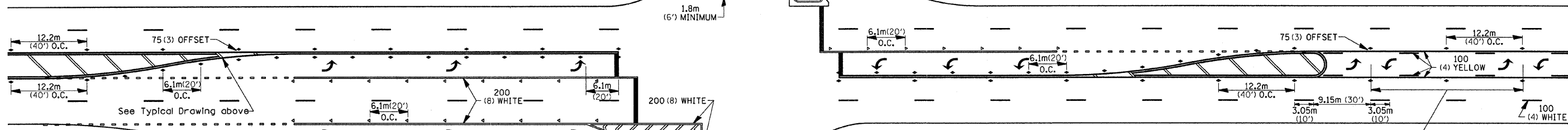
## TYPICAL PAVEMENT MARKING FOR FLUSH MEDIAN



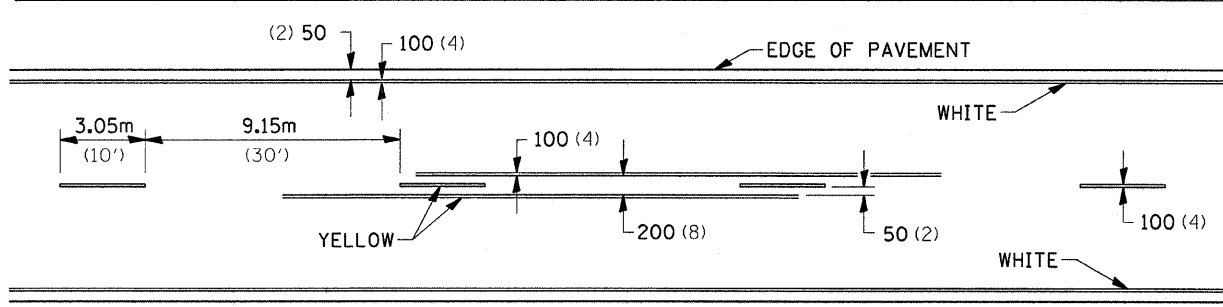
### RECOMMENDED SPACING BETWEEN DIAGONALS (IN FEET)

Speed Limit Range	Continuous Median Area	Intersection Channelization	Objects (Islands)
less than 50km/H (30MPH)	15.3m (50')	4.53m (15')	3.05m (10')
50-60km/H (30-40MPH)	22.9m (75')	6.1m (20')	4.53m (15')
70km/H (45MPH) & over	22.9m (75')	9.05m (30')	6.1m (20')

NOTE: If the spacing recommended in the Table does not permit at least five diagonal lines in the area being marked, the spacing from the next lowest speed range should be used. The recommended spacing is measured parallel to the pavement center line.



## TYPICAL PAVEMENT MARKING FOR TWO LANE SECTION - NO PASSING ZONES



## SYMBOLS

- REDUCE TO 12.2m (40') O.C. ON CURVES WHERE ADVISORY SPEEDS ARE 15km/H (10MPH) LOWER THAN POSTED SPEEDS.
- USE DOUBLE MARKERS WHEN ADT ≥ 25,000

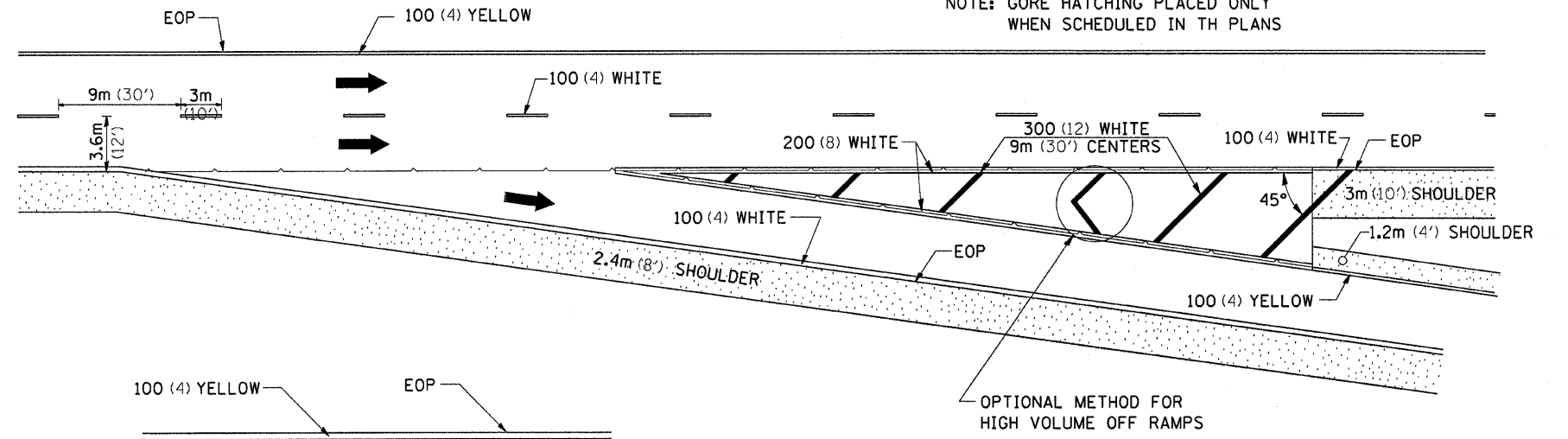
## MULTI-LANE / UNDIVIDED

FILE NAME =	USER NAME = lmkdj	DESIGNED - ---	REVISED - 1-J1-08	<b>STATE OF ILLINOIS DEPARTMENT OF TRANSPORTATION</b>	<b>REGION 2 / DISTRICT 2 STANDARD</b>		F.A. RTE.	SECTION	COUNTY	TOTAL SHEETS	SHEET NO.
D:\BRY\CADD plans\Winnebago County\1810055 & 0056\01-101-0055&56.Coversheet.dgn		DRAWN - ---	REVISED - ---		301	(38)M-1	WINNEBAGO	13	13		
PLOT SCALE = 48.8349 / IN.		CHECKED - ---	REVISED - ---		SCALE: _____ SHEET NO. ___ OF ___ SHEETS STA. _____ TO STA. _____		FED. ROAD DIST. NO. _____ ILLINOIS FED. AID PROJECT		CONTRACT NO. 64E16		
PLOT DATE = Mon Jul 28 06:33:50 2008		DATE - ---	REVISED - ---		<b>TYPICAL PAVEMENT MARKINGS SHEET 2 OF 2 41.1</b>						

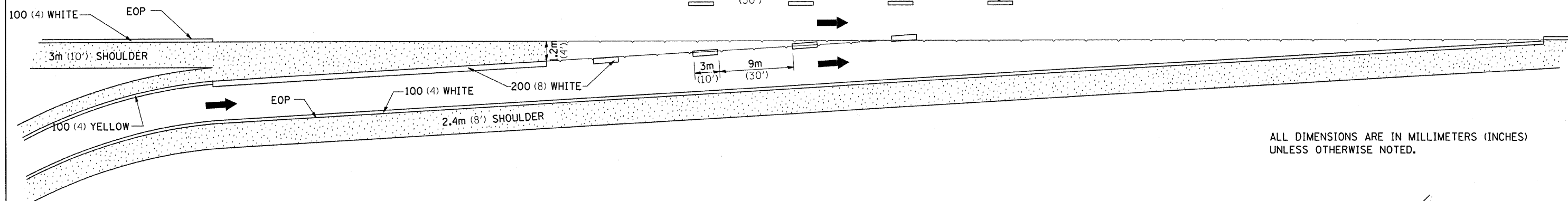
# PAINTING DETAILS

## EXIT RAMP

NOTE: GORE HATCHING PLACED ONLY WHEN SCHEDULED IN TH PLANS

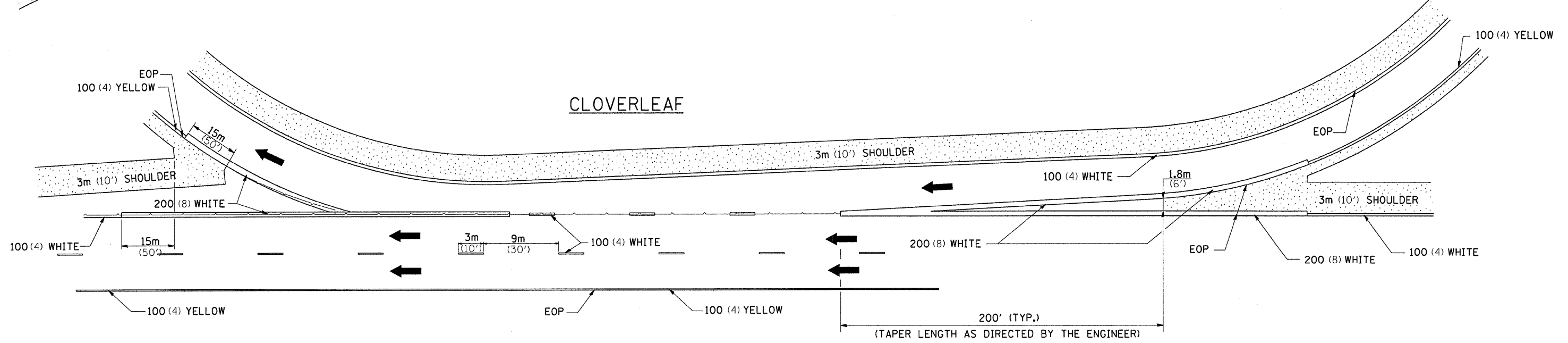


## ENTRANCE RAMP



ALL DIMENSIONS ARE IN MILLIMETERS (INCHES) UNLESS OTHERWISE NOTED.

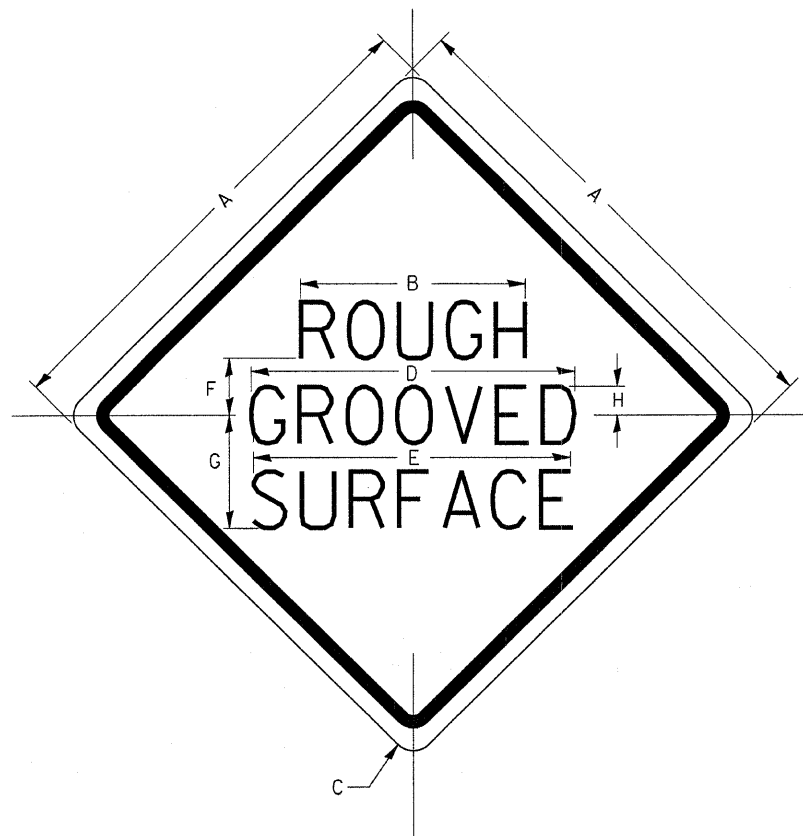
## CLOVERLEAF



FILE NAME =	USER NAME = linkdj	DESIGNED -	REVISED - 6-26-90	<b>STATE OF ILLINOIS DEPARTMENT OF TRANSPORTATION</b>	<b>REGION 2 / DISTRICT 2 STANDARD</b>	F.A. RTE. -	SECTION -	COUNTY -	TOTAL SHEETS -	SHEET NO. -	
0:\BRY\CADD plans\Winnebago County\1010055 & 0056\01-101-0055&56.Coversheet.dgn		DRAWN -	REVISED -			301	(38)M-1	WINNEBAGO		137	
PLOT SCALE = 48.8349' / IN.		CHECKED -	REVISED -			SCALE: _____ SHEET NO. ___ OF ___ SHEETS STA. _____ TO STA. _____		FED. ROAD DIST. NO. _____ ILLINOIS FED. AID PROJECT			
PLOT DATE = Mon Jul 28 06:34:24 2008		DATE -	REVISED -			<b>CONTRACT NO. 64E16</b>					

# ROUGH GROOVED SURFACE SIGN

ILLINOIS STANDARD W8-I107  
SIGN PANEL TYPE 1



COLOR: LEGEND AND BORDER - BLACK NON-REFLECTIVE  
BACKGROUND - ORANGE REFLECTORIZED

SIGN SIZE	DIMENSIONS							
	A	B	C	D	E	F	G	H
1200x1200 (48x48)	1200 (48.0)	600 (24.1)	75 (3.0)	850 (34.0)	825 (33.0)	150 (6.0)	325 (13.0)	88 (3.5)

SIGN SIZE	SERIES			MARGIN	BORDER	BLANK STD.
	LINES					
	1	2	3			
1200x1200 (48x48)	7C	7C	7C	20 (0.8)	30 (1.2)	B4-48D

ALL DIMENSIONS IN INCHES.

REVISED - 1-09-08

## GENERAL NOTES

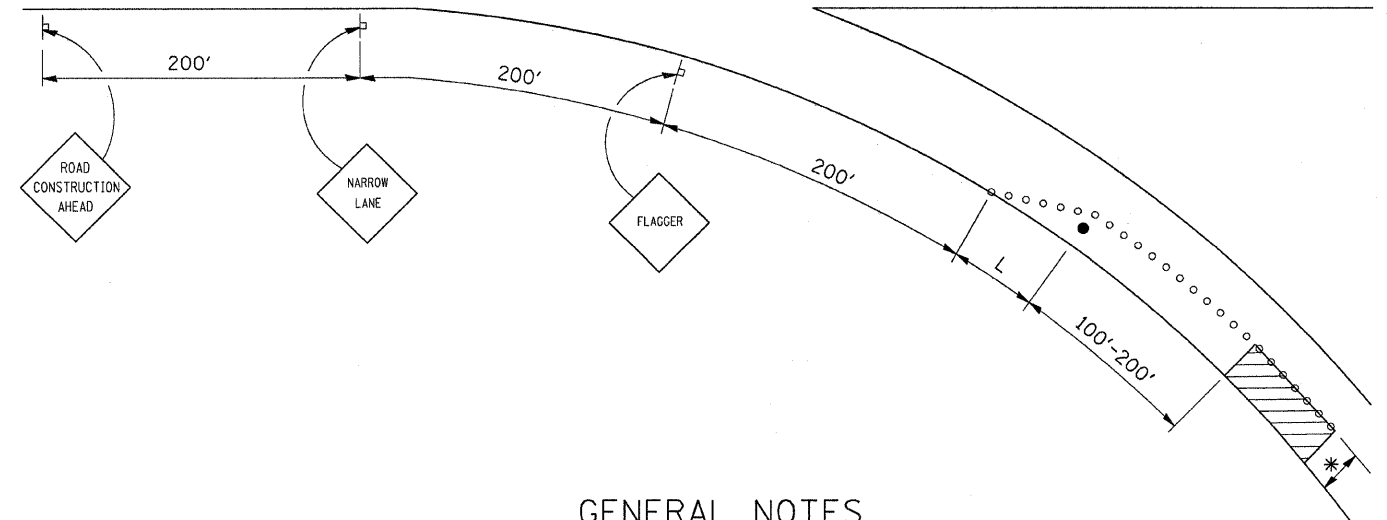
SIGN PANELS AND FACE MATERIALS SHALL BE ACCORDING TO SECTION 720 OF THE STANDARD SPECIFICATIONS

METAL POSTS SHALL BE IN ACCORDANCE WITH STD. 720011.

ALL MOUNTING HARDWARE SHALL BE ALUMINUM, STAINLESS STEEL, ZINC OR CADMIUM PLATED STEEL AND SHALL BE INCLUDED TO THE COST OF THE INSTALLATION.

ALL DIMENSIONS ARE IN MILLIMETERS (INCHES) UNLESS OTHERWISE NOTED.

# TRAFFIC CONTROL AND PROTECTION FOR RAMPS



## GENERAL NOTES

CONES AT 8 m (25') CENTERS FOR 105 m (350'). ADDITIONAL CONES MAY BE PLACED AT 15 m (50') CENTERS. WHEN DRUMS OR BARRICADES ARE USED, THE INTERVAL DEVICES MAY BE DOUBLED.

\* WIDTH OF CLOSURE SHOWN ON RAMP PATCHING SCHEDULE OR AS DIRECTED BY ENGINEER.

L = CLOSURE WIDTH \* TAPER RATIO IS SPEED LIMIT / 1 (POSTED OR ADVISORY)

ANY VISIBLE REPAIRS REQUIRED ON THE SHOULDER BECAUSE OF TRAFFIC SHALL BE PROVIDED AT THE CONTRACTORS EXPENSE. THE ENGINEER SHALL BE THE SOLE JUDGE FOR ANY SHOULDER REPAIRS.

THE RAMP SHALL BE COMPLETELY OPEN TO TRAFFIC BY NIGHTFALL.

TRAFFIC CONTROL AND PROTECTION FOR RAMPS SHALL BE INCLUDED IN THE COST OF STANDARD 701406 OR 701401

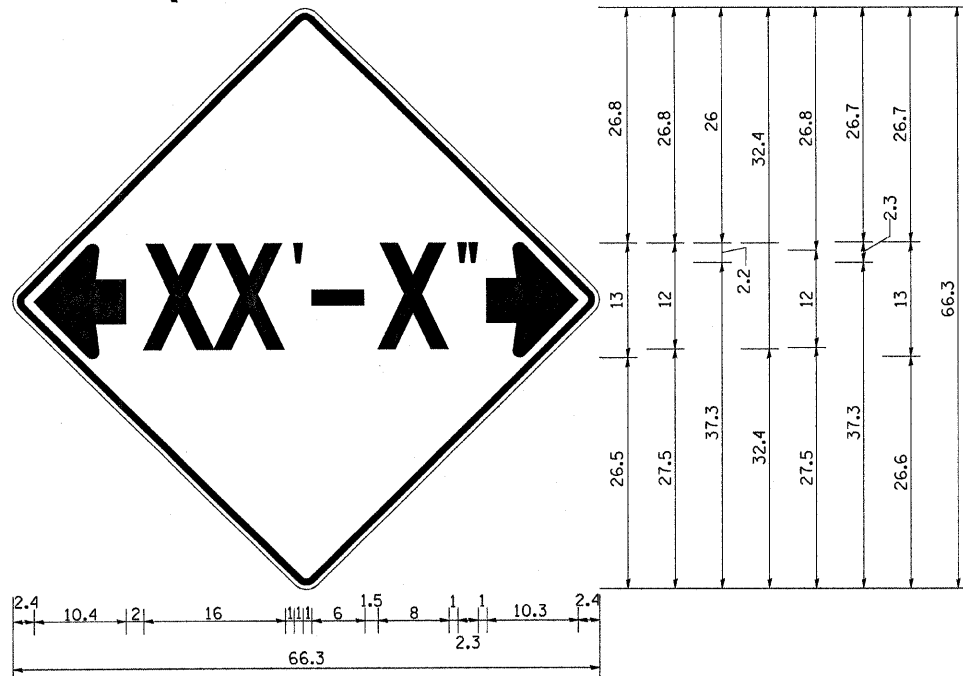
## SYMBOLS

- WORK AREA
- SIGN
- BARRICADE OR DRUM
- CONE, DRUM OR BARRICADE
- FLAGGER WITH TRAFFIC CONTROL SIGN

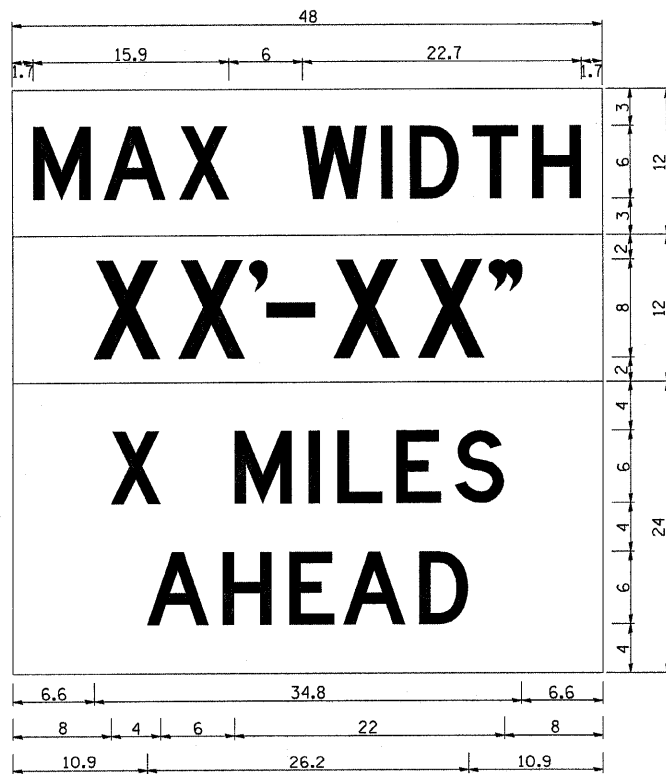
ALL DIMENSIONS ARE IN MILLIMETERS (INCHES) UNLESS OTHERWISE NOTED.

REVISED 10-15-04	REGION 2 / DISTRICT 2 STANDARD		F.A. RTE.	SECTION	COUNTY	TOTAL SHEETS	SHEET NO.
REVISED -			301	(380M-1)	WINNEBAGO	13	13
REVISED -	SCALE: 48.0349' = 1" IN		SHEET NO. OF SHEETS		TO STA.		CONTRACT NO. 64E16
REVISED -	PLOT DATE = Mon Jul 28 06:34:52 2008		FED. ROAD DIST. NO. ILLINOIS		FED. AID PROJECT		

# INFORMATIONAL WARNING SIGN (FOR NARROW TRAVEL LANES)



**NOTES**  
 W12-2 - Horizontal Clearance Sign  
 48.0" across sides, 1.9" Radius,  
 0.8" Border, 0.5" Indent, Black on  
 Orange; Standard Arrow Custom  
 10.4" X 8.1" 180° Black 11 Inch  
 D Series Lettering; Standard Arrow  
 Custom 10.4" X 8.1" 0°



W12-1103 (Width is 8D);  
 No border, Black on White;  
 [MAX WIDTH] D;

No border, Black on Orange;  
 [XX'-XX"] D;

No border, Black on White;  
 [X MILES] D; [AHEAD] D;

All work to furnish and install these signs shall be included in the cost of the Traffic Control Standards and shall not be paid for separately.

ALL DIMENSIONS ARE IN INCHES UNLESS OTHERWISE NOTED.

REVISED - 1-9-08

REVISED - ---	<b>REGION 2 / DISTRICT 2 STANDARD</b>	F.A. RTE.	SECTION	COUNTY	TOTAL SHEETS	SHEET NO.
REVISED - ---		301	(38)BIM-1	WINNEBAGO	---	13E
REVISED - ---		CONTRACT NO. 64E16				
REVISED - ---		FED. ROAD DIST. NO. - ILLINOIS FED. AID PROJECT				
SCALE: 48.0349 1/2 IN SHEET NO. --- OF --- SHEETS		STA. ----- TO STA. -----				

PLOT DATE = Mon Jul 28 06:35:31 2008