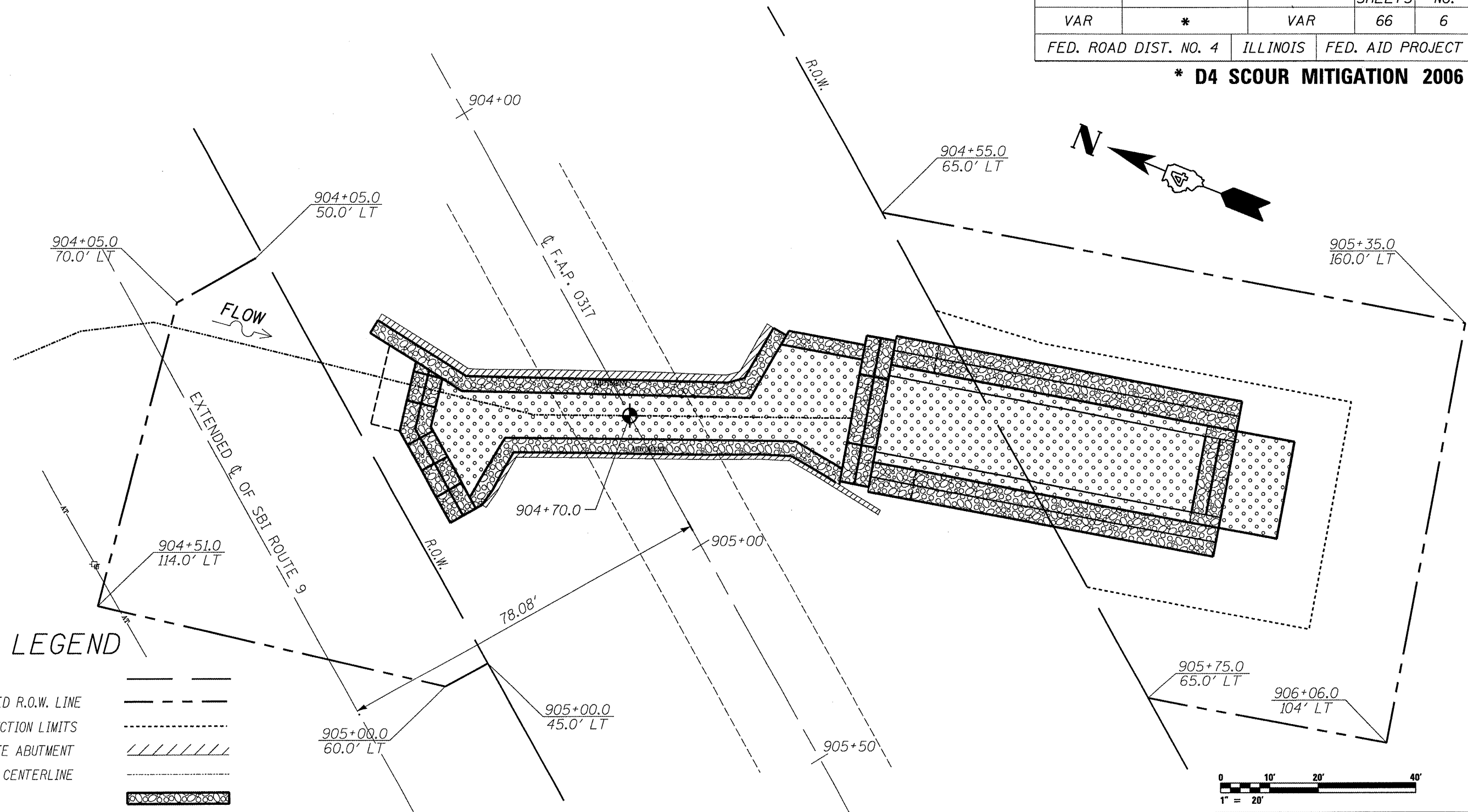


ROUTE NO.	SECTION	COUNTY	TOTAL SHEETS	SHEET NO.
VAR	*	VAR	66	6
FED. ROAD DIST. NO. 4		ILLINOIS	FED. AID PROJECT	

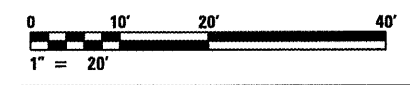
**\* D4 SCOUR MITIGATION 2006**



**LEGEND**

- R.O.W.
- PROPOSED R.O.W. LINE
- CONSTRUCTION LIMITS
- CONCRETE ABUTMENT
- STREAM CENTERLINE
- GABION
- SLOPE MATTRESS
- AERIAL TELEPHONE
- TELEPHONE POLE
- TELEPHONE RISER

= INTERSECTION OF  $\phi$  OF EXISTING STRUCTURE AND  $\phi$  OF F.A.P. 0317



ILLINOIS DEPARTMENT OF TRANSPORTATION  
 PROPOSED R.O.W. PLAN  
 S.N. 029-0002  
 F.A.P. 0317 (U.S. RTE. 24)  
 OVER DRY RUN CREEK  
 FULTON COUNTY  
 SHEET 2 OF 11