

BENCHMARK: BRASS U.S.G.S. TOP OF SE WINGWALL
ELEV. = 503.92

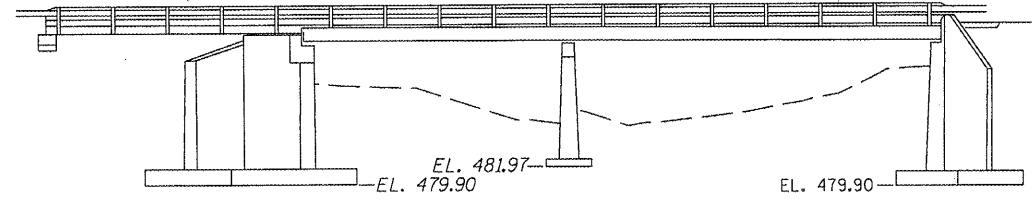
EXISTING STRUCTURE: SN 029-0027 IS A 40'-6" WIDE x 99'-4" LONG R.C. SLAB ON STRUCTURAL STEEL BEAM SUPERSTRUCTURE. WITH R.C. CLOSED ABUTMENTS.

ROUTE NO.	SECTION	COUNTY	TOTAL SHEETS	SHEET NO.
VAR	*	VAR	66	16
FED. ROAD DIST. NO. 4		ILLINOIS	FED. AID PROJECT	

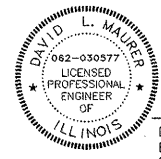
*** D4 SCOUR MITIGATION 2006**

INDEX OF SHEETS

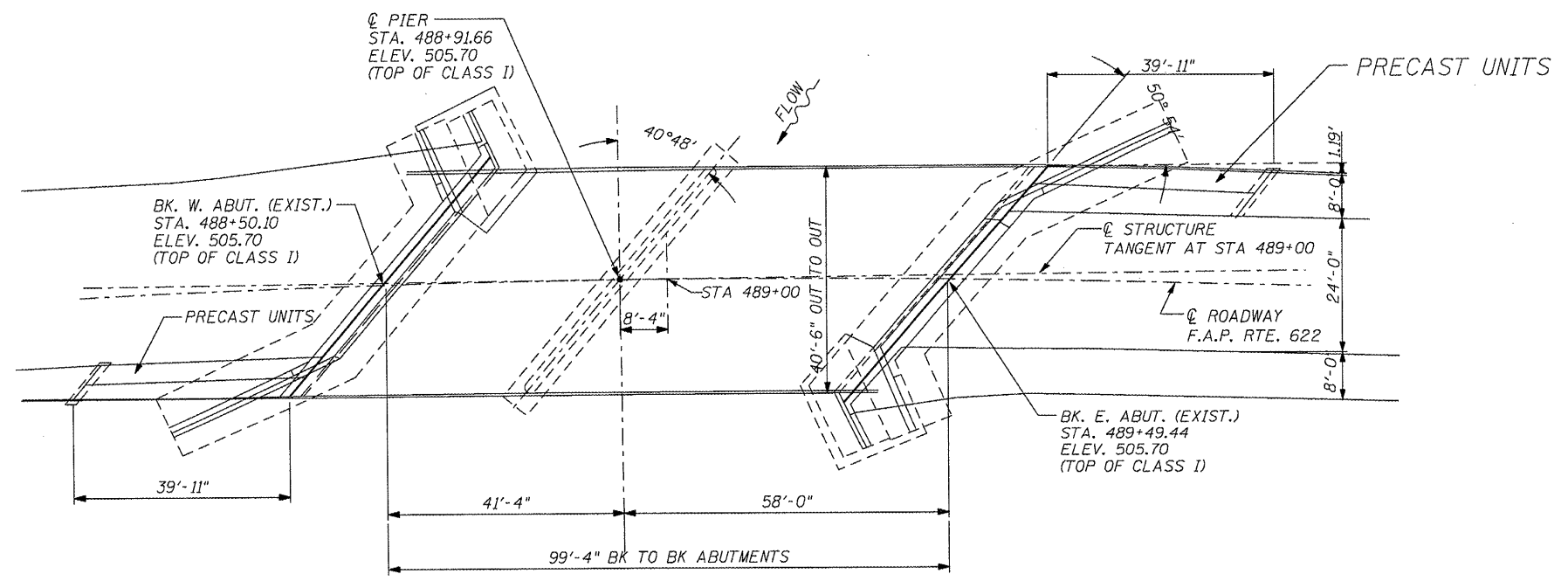
SHEET NUMBER	DESCRIPTION
1	GENERAL PLAN AND PROFILE, SUMMARY OF QUANTITIES, LOCATION MAP
2	R.O.W. PLAN
3	PROPOSED SITE PLAN
4	PROPOSED DIMENSION PLAN
5	SITE PROFILE
6-8	CROSS SECTIONS



ELEVATION

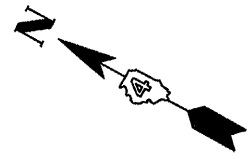


David L. Maurer, P.E.
Exp. Date 11/2009
P.E. No.: 062-030577



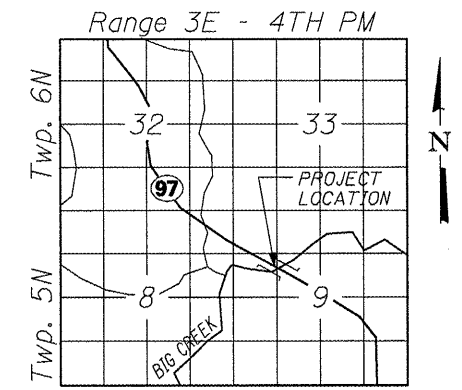
PLAN

EXISTING BRIDGE



BILL OF MATERIALS		
ITEM	UNIT	TOTAL
TREE REMOVAL (6-15 UNITS)	UNIT	22
CHANNEL EXCAVATION	CU YD	1056
PERIMETER EROSION CONTROL	FOOT	25
STONE RIP-RAP, CLASS A5	TONS	159
FILTER FABRIC	SQ YD	1242
GABIONS	CU YD	337
SLOPE MATTRESS 12"	SQ YD	624
SUB-BASE GRANULAR MATERIAL, TYPE C	TONS	590
GABION ANCHOR STAKE	EACH	102
DEWATERING STRUCTURE NO. 2	EACH	1

TREE REMOVAL		
STA	OFFSET	UNITS
489+03	40' L	8
489+03	40' L	10
489+03	40' L	4
TOTAL		22



LOCATION SKETCH

WATERWAY/SCOUR INFORMATION

DESIGN FLOOD	100 YRS
DRAINAGE AREA	53.1 SQ MI
FLOW	6,672 CFS
FLOW DEPTH	14.3 FT
REQUIRED FLOW AREA	800 SQ FT
PROVIDED FLOW AREA	946 SQ FT
CONTRACTION SCOUR DEPTH	15 FT

ILLINOIS DEPARTMENT OF TRANSPORTATION
GENERAL PLAN & ELEVATION
S.N. 029-0027
F.A.P. 622 (IL. RTE. 97)
OVER BIG CREEK
FULTON COUNTY
SHEET 1 OF 8