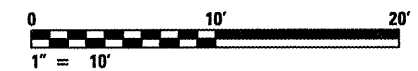
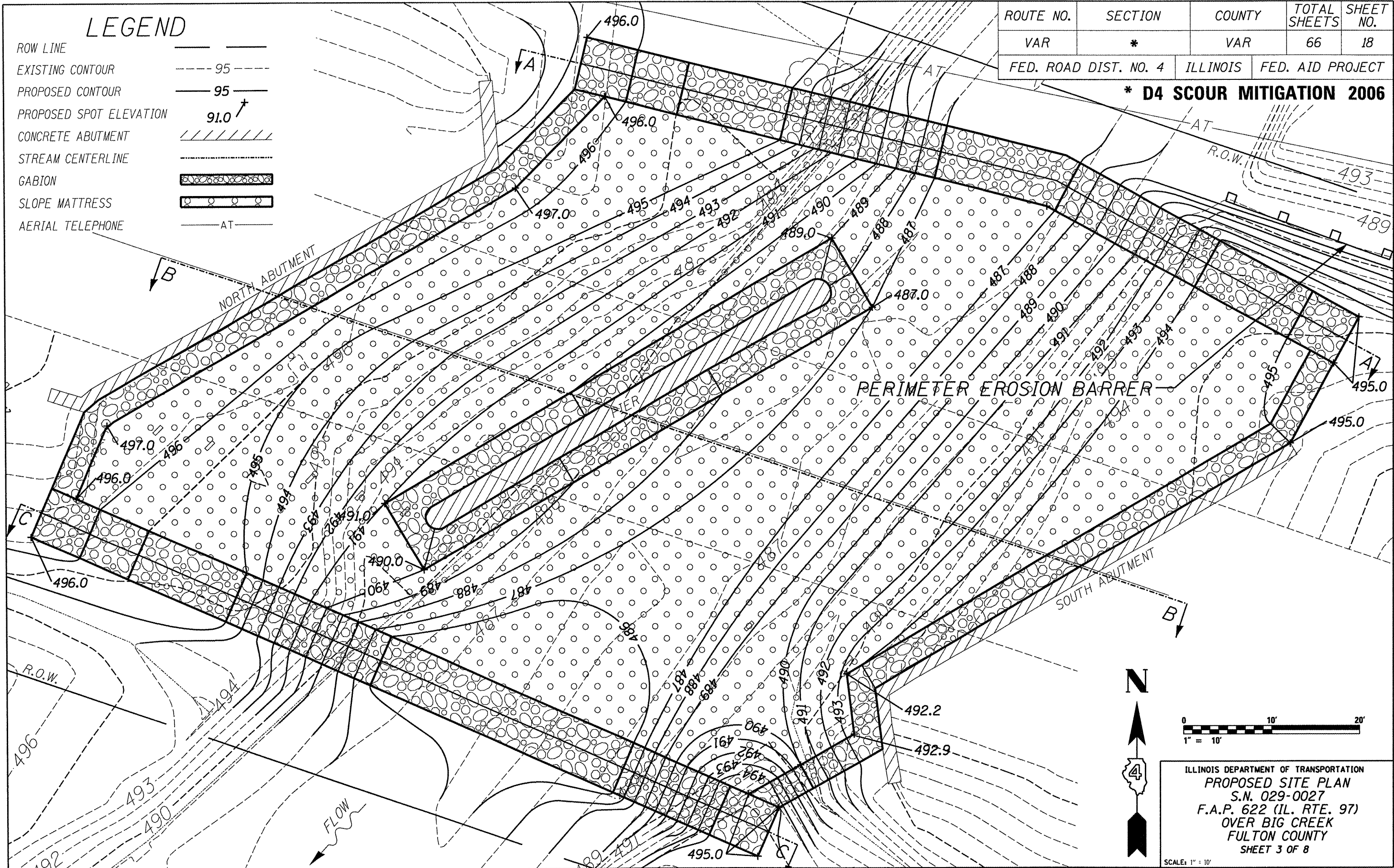


LEGEND

- ROW LINE
- EXISTING CONTOUR 95
- PROPOSED CONTOUR 95
- PROPOSED SPOT ELEVATION 91.0 ↗
- CONCRETE ABUTMENT
- STREAM CENTERLINE
- GABION
- SLOPE MATTRESS
- AERIAL TELEPHONE AT

ROUTE NO.	SECTION	COUNTY	TOTAL SHEETS	SHEET NO.
VAR	*	VAR	66	18
FED. ROAD DIST. NO. 4		ILLINOIS	FED. AID PROJECT	

* D4 SCOUR MITIGATION 2006



ILLINOIS DEPARTMENT OF TRANSPORTATION
 PROPOSED SITE PLAN
 S.N. 029-0027
 F.A.P. 622 (IL. RTE. 97)
 OVER BIG CREEK
 FULTON COUNTY
 SHEET 3 OF 8

SCALE: 1" = 10'