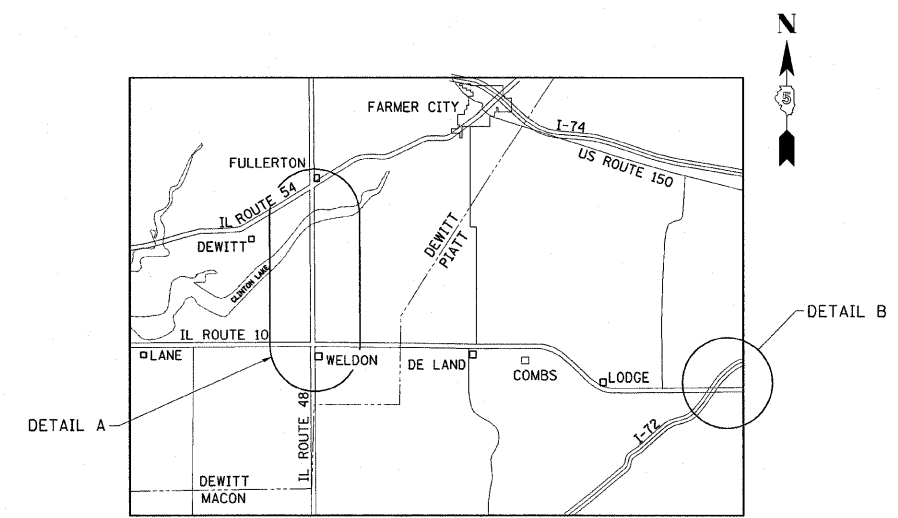
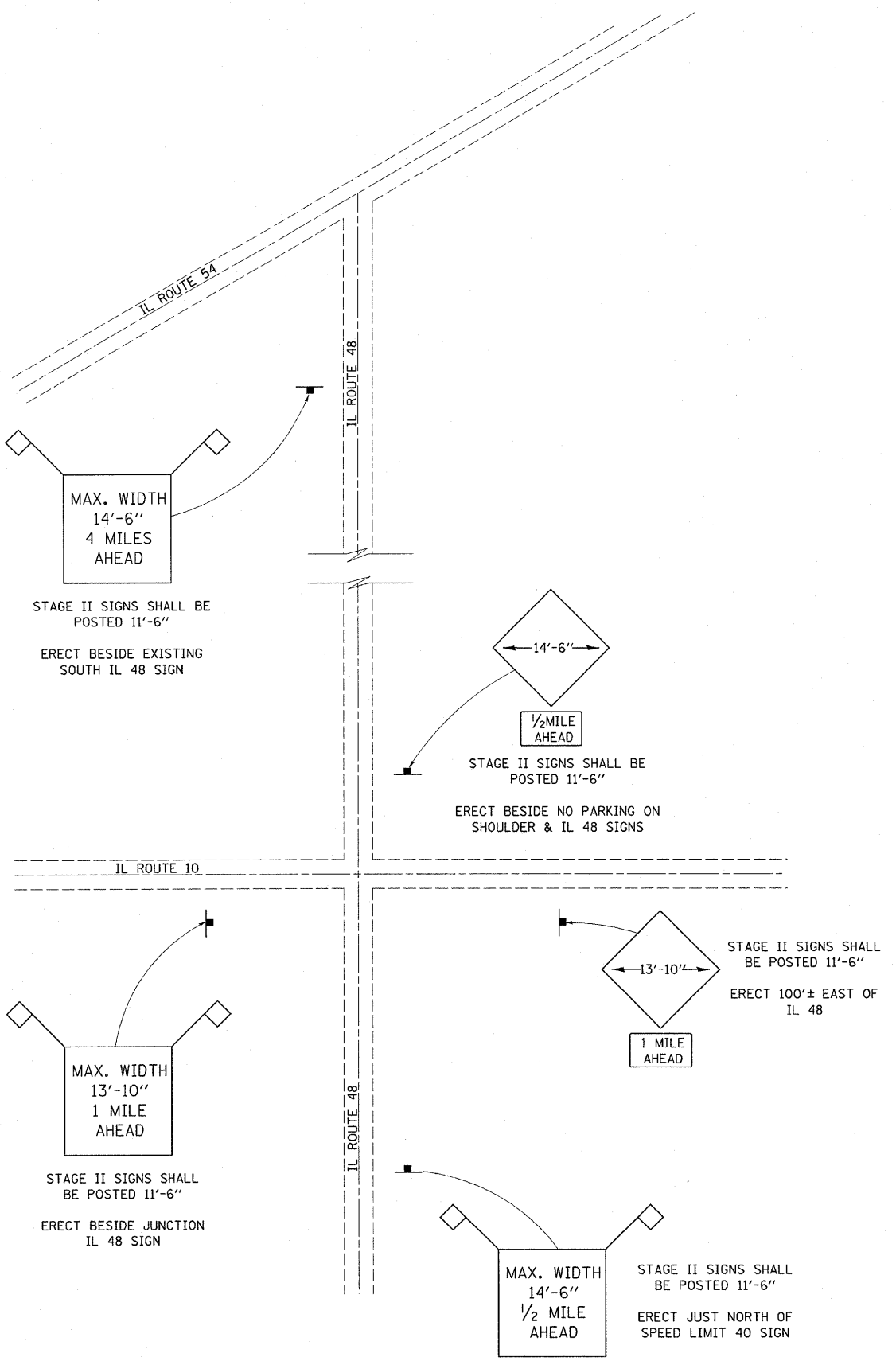


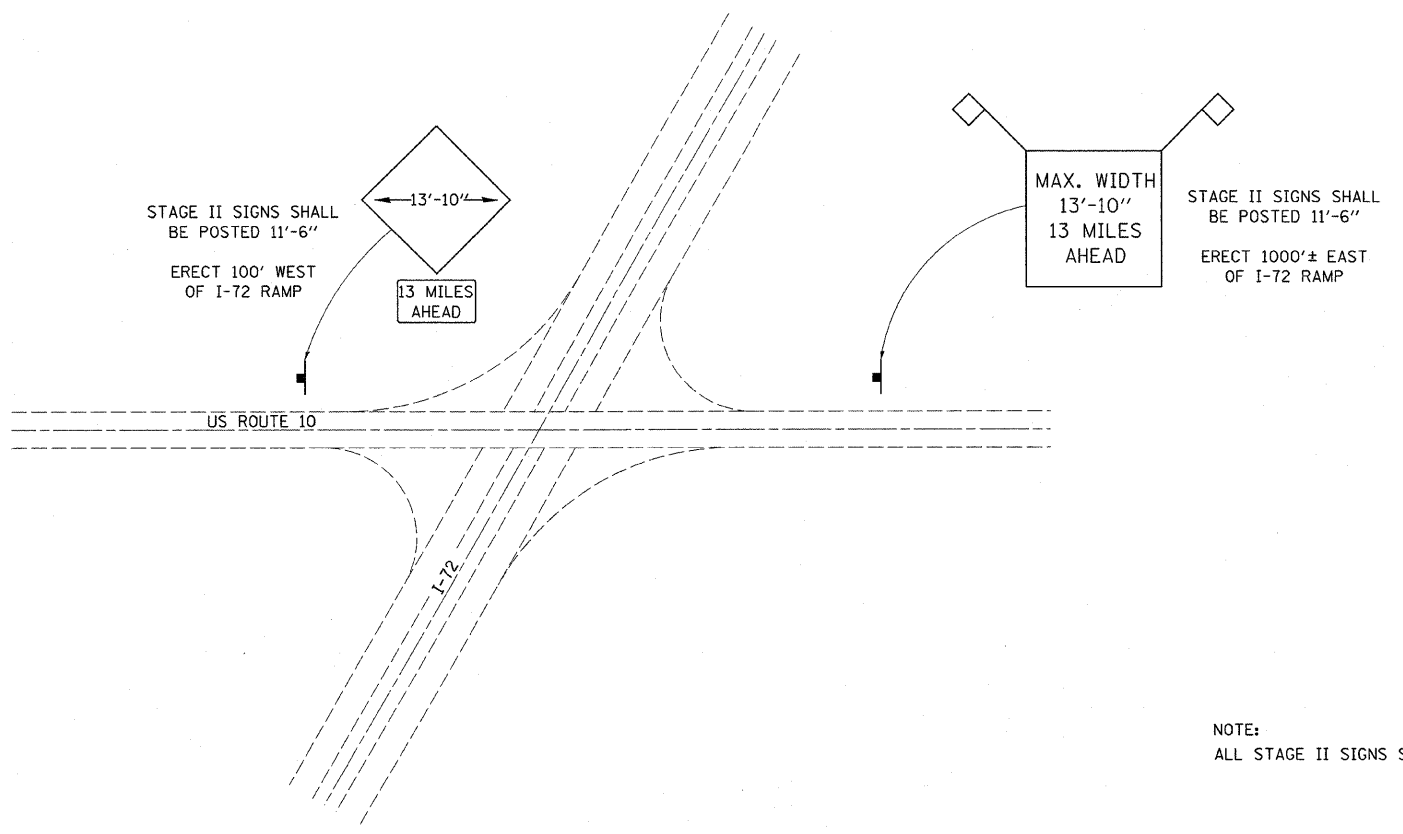
F.A.P. RTE.	SECTION	COUNTY	TOTAL SHEETS	SHEET NO.
*	**	DEWITT	64	21
STA.		TO STA.		
FED. ROAD DIST. NO. 3		ILLINOIS FED. AID PROJECT		
*FAP 721 & 760				
**SECTION 114BR-2 & 124BR-1				
CONTRACT NO. 70014				



LOCATION MAP



DETAIL A



DETAIL B

NOTE:
ALL STAGE II SIGNS SHALL BE POSTED 11'-6"

REVISIONS	
NAME	DATE

ILLINOIS DEPARTMENT OF TRANSPORTATION

WIDTH RESTRICTION SIGNING DETAIL

FAP 721 & 760
SECTION 114BR-2 & 124BR-1
DEWITT COUNTY

DATE 10/13

DRAWN BY BANDY
CHECKED BY STEUART