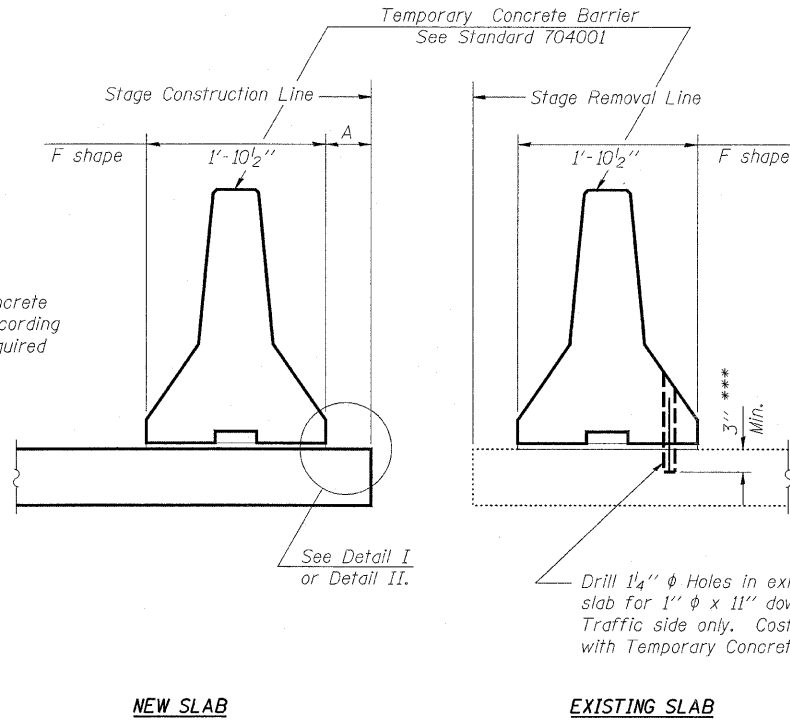


STATE OF ILLINOIS
DEPARTMENT OF TRANSPORTATION

ROUTE NO.	SECTION	COUNTY	TOTAL SHEETS	SHEET NO.
FAP 721	114BR-2	DEWITT	64	34
FED. ROAD DIST. NO. 9	ILLINOIS	FED. AID PROJECT	CONTRACT NO. 70014	

SHEET NO. 6 of
9 SHEETS

When "A" is 3'-6" or less, the temporary concrete barrier shall be anchored to the new slab according to Detail I or Detail II. No anchorage is required when "A" is greater than 3'-6".

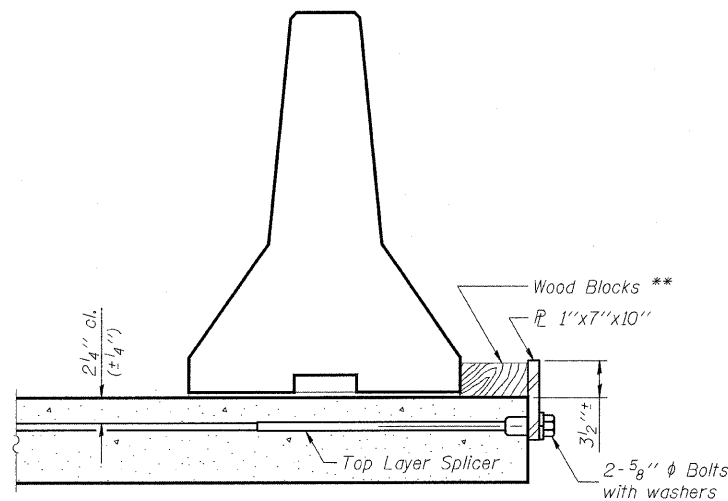


SECTION THRU SLAB

*** Dimension shown is minimum required embedment into concrete
If hot-mix asphalt wearing surface is present, minimum embedment shall be in addition to wearing surface depth.

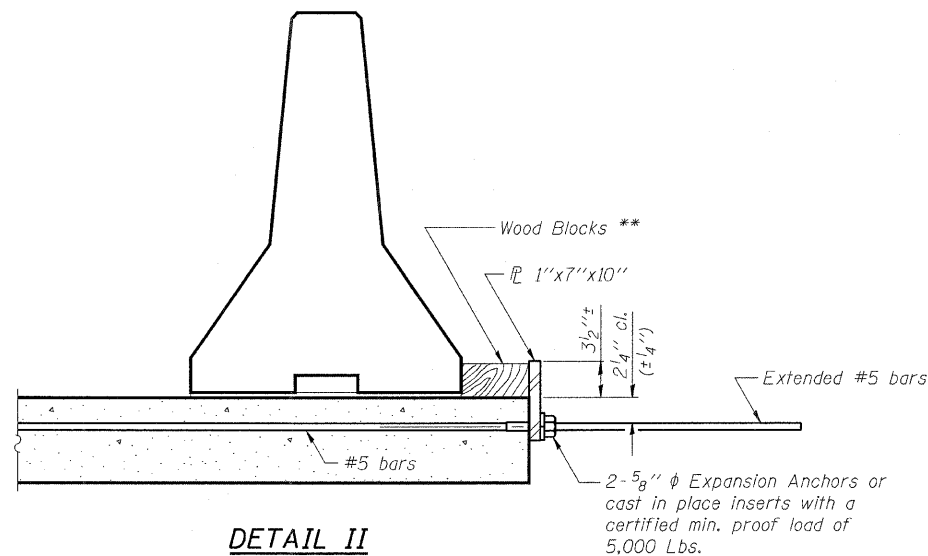
NOTES

- Detail I - With Bar Splicer or Couplers:
Connect one (1) 1"x7"x10" steel \bar{L} to the top layer of couplers with 2- $\frac{5}{8}$ " ϕ bolts screwed to coupler at approximate \bar{C} of each barrier panel.
- Detail II - With Extended Reinforcement Bars:
Connect one (1) 1"x7"x10" steel \bar{L} to the concrete slab or concrete wearing surface with 2- $\frac{5}{8}$ " ϕ Expansion Anchors or cast in place inserts spaced between the top layer of reinforcement at approximate \bar{C} of each barrier panel.
- Cost of anchorage is included with Temporary Concrete Barrier.



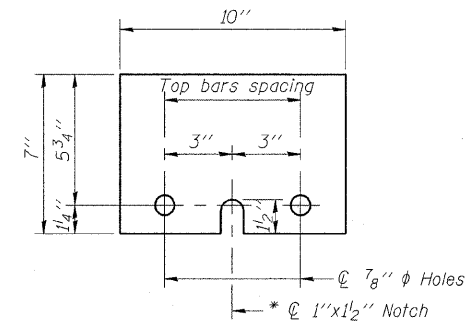
DETAIL I

The 1"x7"x10" Plate shall not be removed until Stage II Construction forms and reinforcement bars are in place.



DETAIL II

The 1"x7"x10" Plate shall not be removed until Stage II Construction forms and all reinforcement bars are in place and the concrete is ready to be placed.



1" x 7" x 10"

* Required only with Detail II

** Wood blocks may be omitted when required to provide minimum stage traffic lane width. When the wood blocks are omitted, the concrete barrier shall be in direct contact with the steel retainer plate.

DESIGNED	BWB
CHECKED	MAA
DRAWN	PJP
CHECKED	BSC

R-27

PLANS PREPARED BY:

WOOLPERT
WOOLPERT LLP
343 Fountains Parkway, Suite A
Fairview Heights, IL
62208-2044
618.632.7004
FAX: 618.632.0100

STATE OF ILLINOIS
DEPARTMENT OF TRANSPORTATION
IL ROUTE 10 OVER
FRIENDS CREEK DITCH
FAP 721 - SECTION 114BR-2
DEWITT COUNTY
STATION 673+93.40
STRUCTURE No. 020-2010
TEMPORARY CONC. BARRIER FOR STAGE CONST.