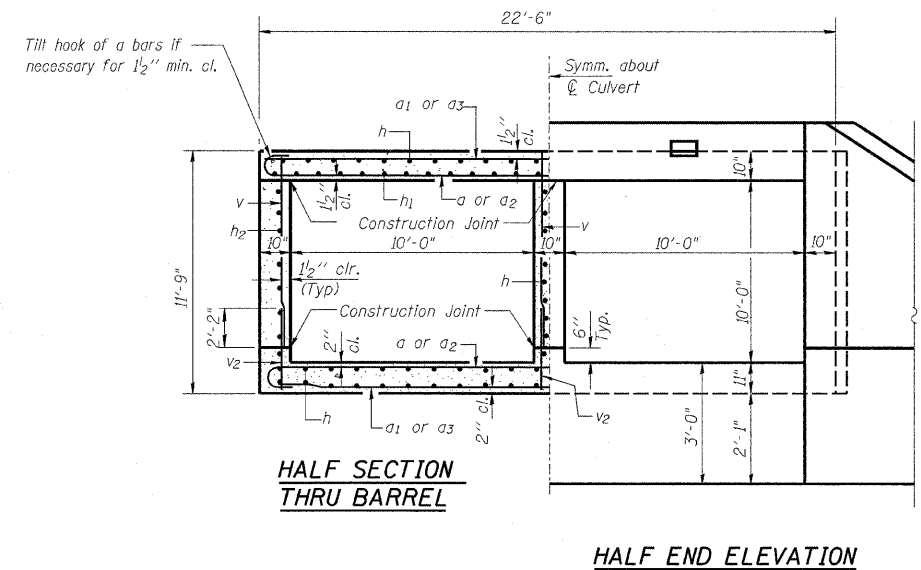
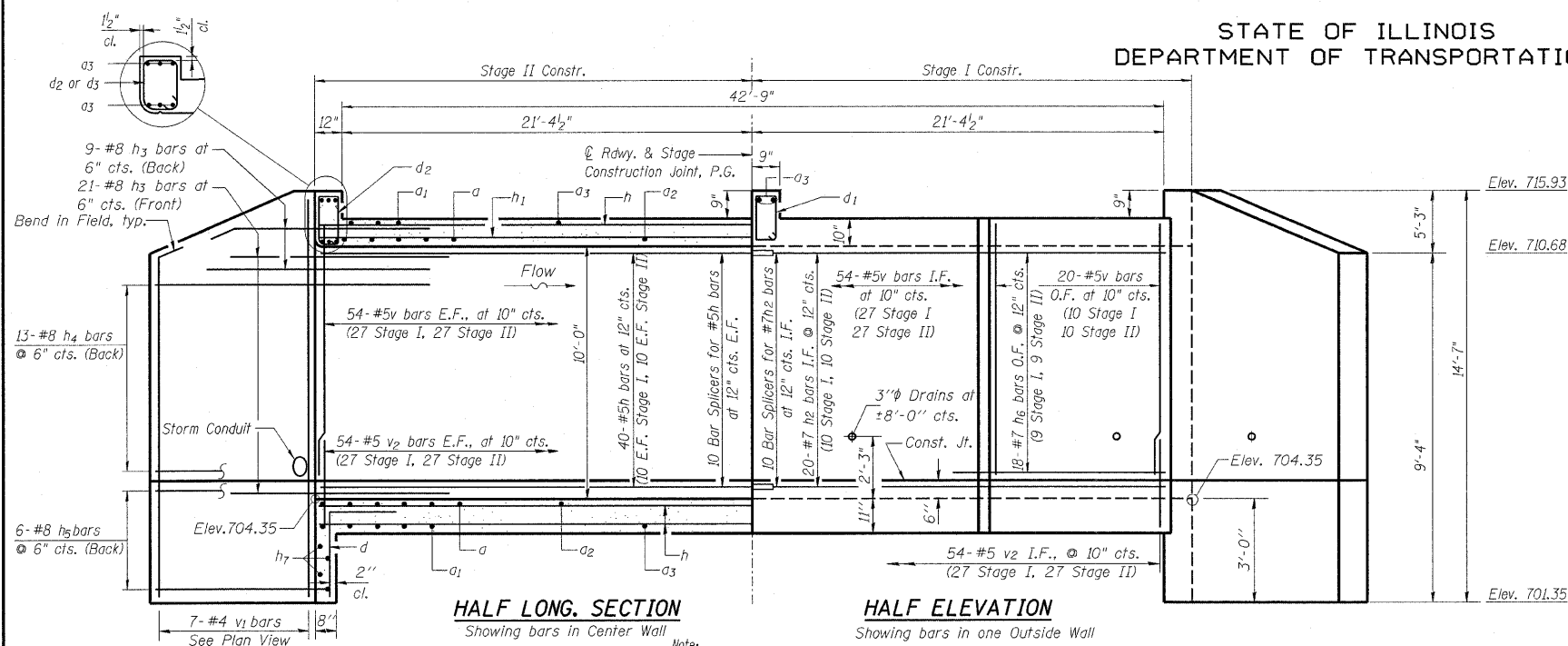


STATE OF ILLINOIS
DEPARTMENT OF TRANSPORTATION

ROUTE NO.	SECTION	COUNTY	TOTAL SHEETS	SHEET NO.
FAP 760	124BR-1	DEWITT	64	40
FED. ROAD DIST. NO. 9		ILLINOIS	FED. AID PROJECT-	

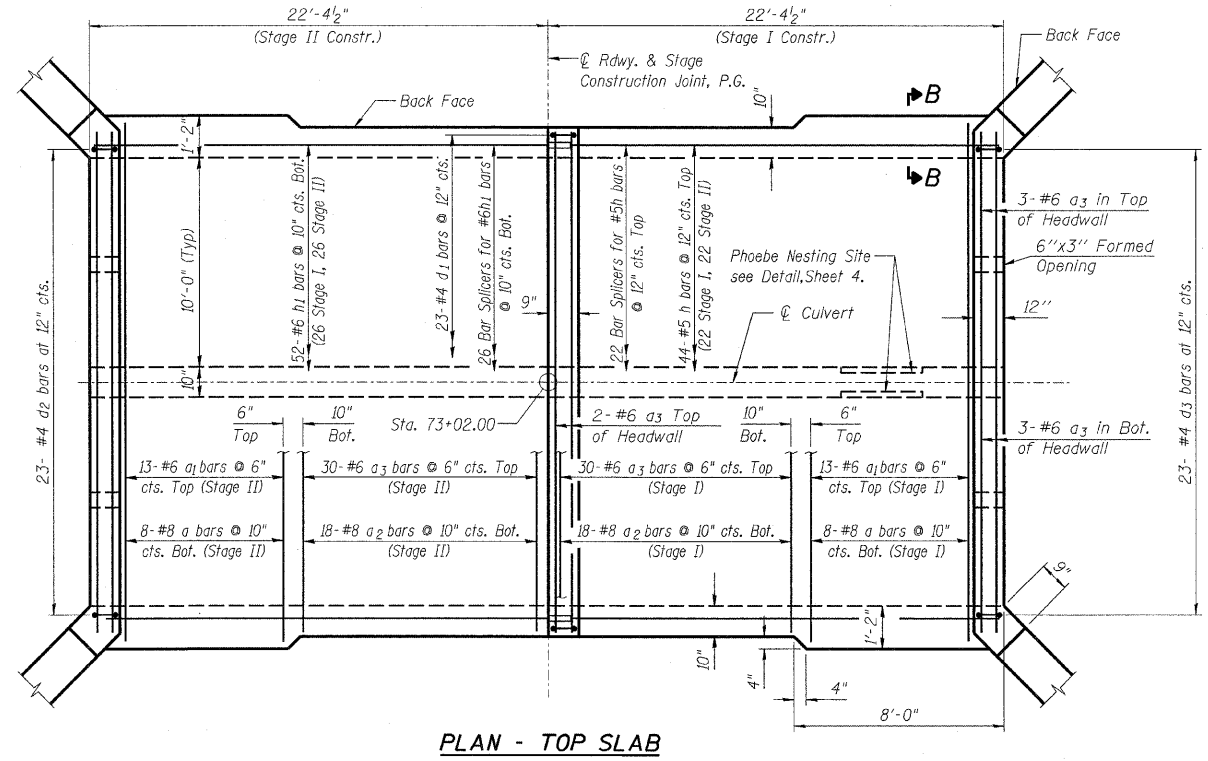
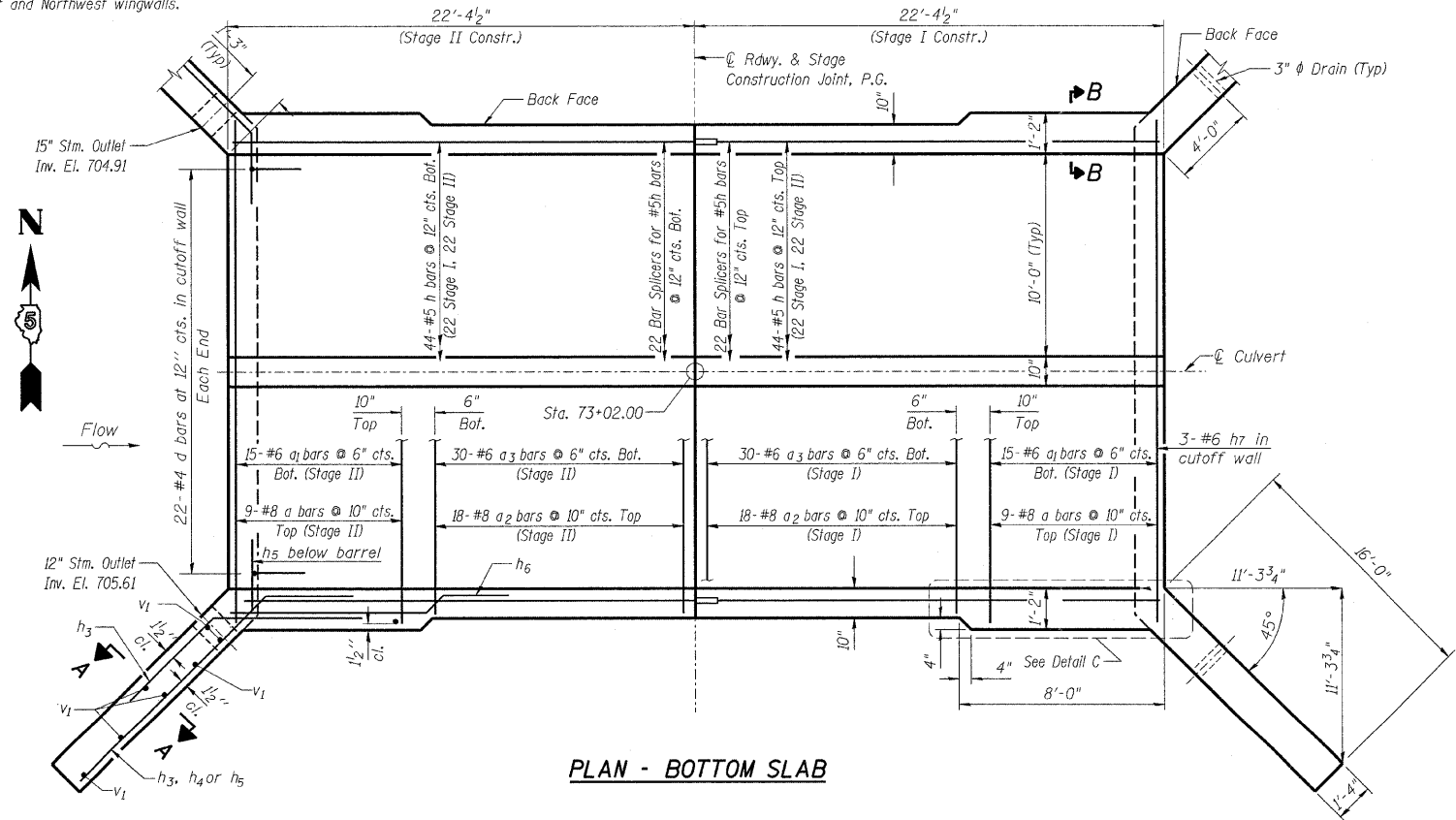
CONTRACT NO. 70014

SHEET NO. 3 of 7 SHEETS



Note: Cut h4 bars and v1 bars as req'd to accommodate storm conduits at the Southwest and Northwest wingwalls.

Note:
E.F. indicates Each Face
I.F. indicates Inside Face
O.F. indicates Outside Face



DESIGNED	-	BWB
CHECKED	-	MAA
DRAWN	-	RMR
CHECKED	-	BSC

NOTES:
1. A distance of half the length of the wingwall but not less than six feet of the barrel shall be poured monolithically with the wingwalls.
2. For additional Culvert Details, Sections A-A, B-B & Detail C see Sheet 4 of 7.

PLANS PREPARED BY:
WOOLPERT LLP
343 Fountains Parkway, Suite A
Fairview Heights, IL
62208-2044
618.632.7004
FAX: 618.632.0100

STATE OF ILLINOIS
DEPARTMENT OF TRANSPORTATION
IL ROUTE 48 OVER
TRIBUTARY TO FRIENDS CREEK DITCH
FAP 760 - SECTION 124BR-1
DEWITT COUNTY
STATION 73+02.00
STRUCTURE No. 020-2011
CULVERT DETAILS