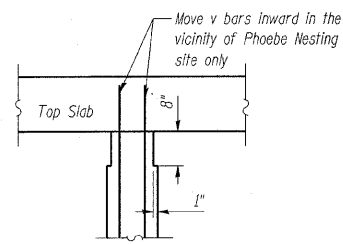


STATE OF ILLINOIS
DEPARTMENT OF TRANSPORTATION

ROUTE NO.	SECTION	COUNTY	SHEETS	"NO."
FAP 760	124BR-1	DEWITT	64	41
FED. ROAD DIST. NO. 8	ILLINOIS	FED. AID PROJECT		

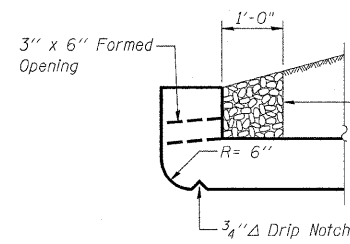
SHEET NO. 4 of
7 SHEETS

CONTRACT NO. 70014

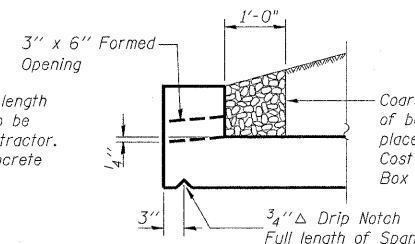


PHOEBE NESTING NOTCH DETAIL

Note: Notch formed by rough-finished board attached to and removed with formwork. Do not chamfer. (Downstream end only.)

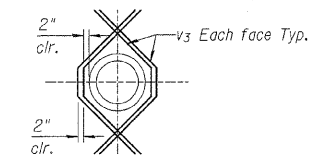


AT UPSTREAM END

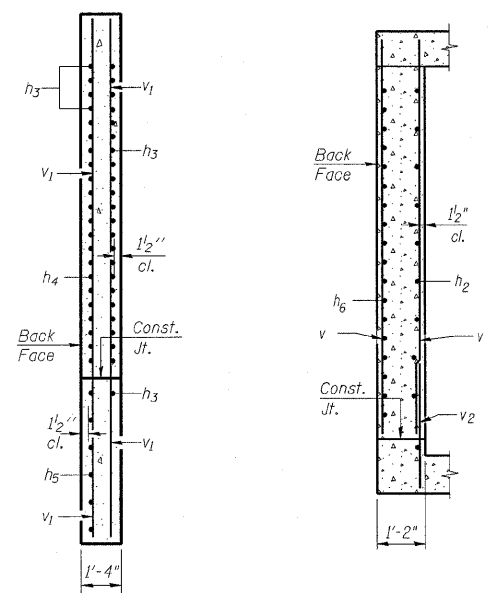


AT DOWNSTREAM END

DRAIN DETAIL

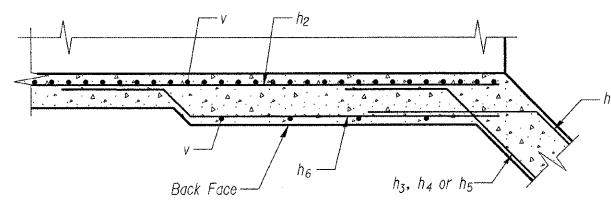


ADDITIONAL BARS AT STORM OUTLETS

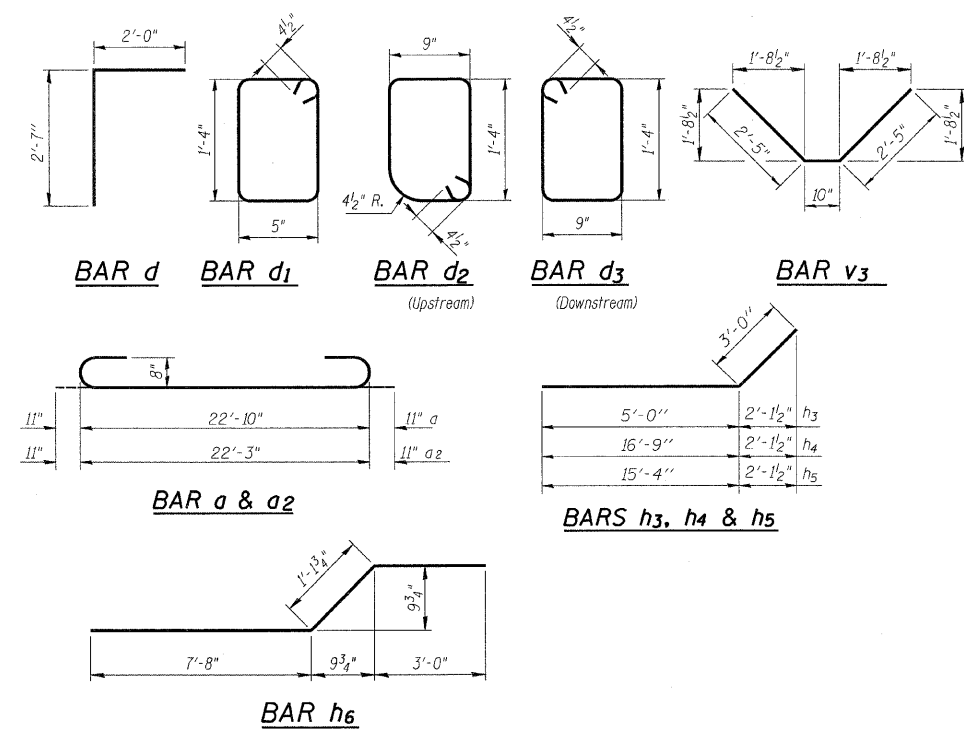


SECTION A-A

SECTION B-B



DETAIL C



BILL OF MATERIAL

Bar	No.	Size	Length	Shape
a	34	#8	24'-8"	U
a1	56	#6	22'-10"	U
a2	72	#8	24'-1"	U
a3	134	#6	22'-2"	U
d	44	#4	4'-7"	L
d1	23	#4	4'-3"	L
d2	23	#4	4'-11"	L
d3	23	#4	4'-11"	L
h	172	#5	22'-2"	U
h1	52	#6	22'-2"	U
h2	40	#7	22'-2"	U
h3	120	#8	8'-0"	U
h4	52	#8	19'-9"	U
h5	24	#8	18'-4"	U
h6	36	#7	11'-9"	U
h7	6	#6	22'-8"	U
v	256	#5	10'-1"	U
v1	28	#4	14'-3"	U
v2	216	#5	3'-5"	U
v3	16	#4	5'-8"	U
Concrete Box Culverts			Cu. Yd.	153.3
Reinforcement Bars			Pound	32470

NOTES:

1. A distance of half the length of the wingwall but not less than six feet of the barrel shall be poured monolithically with the wingwalls.

DESIGNED	-	BWB
CHECKED	-	MAA
DRAWN	-	RMR
CHECKED	-	BSC

PLANS PREPARED BY:

WOOLPERT LLP
343 Fountains Parkway, Suite A
Fairview Heights, IL
62208-2044
618.632.7004
FAX: 618.632.0100

STATE OF ILLINOIS
DEPARTMENT OF TRANSPORTATION
IL ROUTE 48 OVER
TRIBUTARY TO FRIENDS CREEK DITCH
FAP 760 - SECTION 124BR-1
DEWITT COUNTY
STATION 73+02.00
STRUCTURE No. 020-2011
CULVERT DETAILS