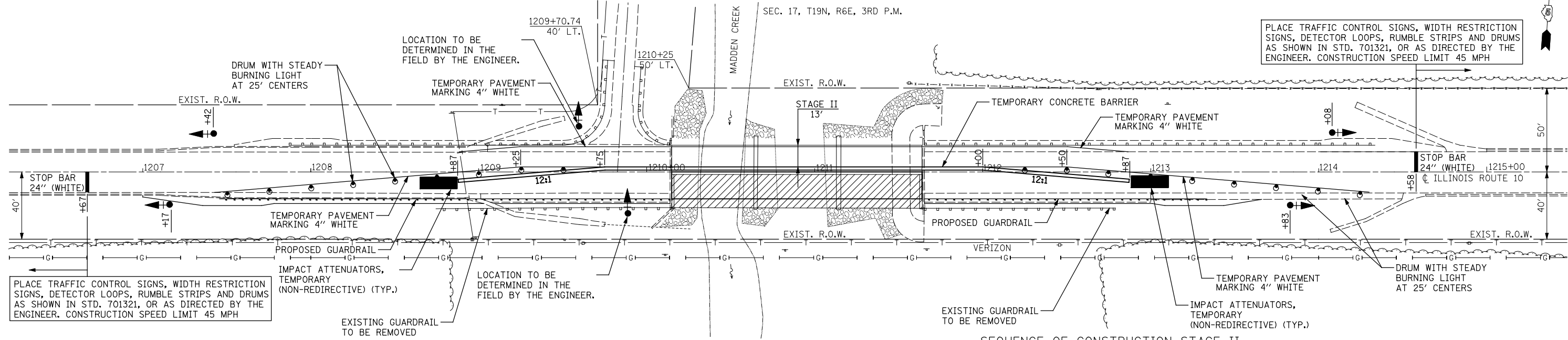


NOTE: SEE ADDITIONAL DETAILS FOR WIDTH RESTRICTION SIGNAGE.

OPEN TR 1125E DURING STAGE II. INSTALL ADDITIONAL SIGNALS, DETECTOR LOOPS, SIGNS AS SHOWN IN STD. 701321 AND (NO TURN ON RED) SIGNS.

PLACE TRAFFIC CONTROL SIGNS, WIDTH RESTRICTION SIGNS, DETECTOR LOOPS, RUMBLE STRIPS AND DRUMS AS SHOWN IN STD. 701321, OR AS DIRECTED BY THE ENGINEER. CONSTRUCTION SPEED LIMIT 45 MPH



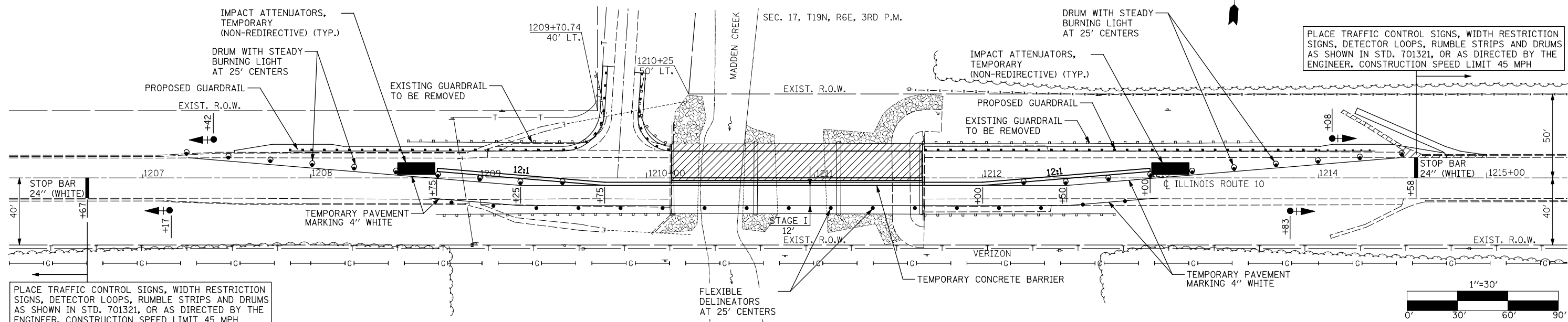
SEQUENCE OF CONSTRUCTION STAGE II

| STAGE II | | | | | | | | | |
|-------------------------|---|---|---|---|---|---|---|---|---|
| TRAFFIC SIGNAL SEQUENCE | | | | | | | | | |
| PHASE | A | | | B | | | C | | |
| INTERVAL | 1 | 2 | 3 | 4 | 5 | 6 | 7 | 8 | 9 |
| EASTBOUND | G | Y | R | R | R | R | R | R | R |
| WESTBOUND | R | R | R | G | Y | R | R | R | R |
| SIDEROAD | R | R | R | R | R | R | G | Y | R |

- 1.) RELOCATE THE TEMPORARY CONCRETE BARRIER AND ATTENUATORS AS SHOWN IN THIS DETAIL AND TRAFFIC CONTROL STANDARD 701321. INSTALL ADDITIONAL SIGNALS AND REOPEN TR 1125E. THEN REDIRECT TRAFFIC TO THE WESTBOUND LANE.
- 2.) REMOVE THE STAGE II PORTION OF THE EXISTING SUPERSTRUCTURE AND GUARDRAIL.
- 3.) COMPLETE THE STAGE II PORTION OF THE NEW SUPERSTRUCTURE AND GUARDRAIL (RT. SIDE).
- 4.) REMOVE THE TRAFFIC CONTROL ITEMS.

STAGE III
UNDER TRAFFIC, COLDMILL, RESURFACE AND STRIPE ROADWAY AS SHOWN ELSEWHERE IN THE PLANS AND COMPLETE ALL REMAINING WORK.

TR 1125E TO BE CLOSED DURING STAGE I IN ACCORDANCE WITH APPLICABLE PORTIONS OF DISTRICT CADD STANDARD 70200000 AND THE SPECIAL PROVISION FOR TC&P DEVICES (ROAD AND SIDEROAD/ STREET CLOSURES).



SEQUENCE OF CONSTRUCTION STAGE I

| STAGE I | | | | | | | | | |
|-------------------------|---|---|---|---|---|---|--|--|--|
| TRAFFIC SIGNAL SEQUENCE | | | | | | | | | |
| PHASE | A | | | B | | | | | |
| INTERVAL | 1 | 2 | 3 | 4 | 5 | 6 | | | |
| EASTBOUND | G | Y | R | R | R | R | | | |
| WESTBOUND | R | R | R | G | Y | R | | | |

- 1.) INSTALL TRAFFIC SIGNALS, SIGNS, TEMPORARY CONCRETE BARRIER AND IMPACT ATTENUATORS, ETC. ACCORDING TO THESE DETAILS AND TRAFFIC CONTROL STANDARD 701321, (MAINTAINING ALL TRAFFIC ON EASTBOUND LANE). CLOSE TR 1125E DURING THIS STAGE.
- 2.) REMOVE THE STAGE I PORTION OF THE EXISTING SUPERSTRUCTURE, GUARDRAIL AND GUTTER AS SHOWN ELSEWHERE IN THE PLANS AND THIS DETAIL.
- 3.) CONSTRUCT THE STAGE I PORTION OF THE NEW SUPERSTRUCTURE, GUARDRAIL (LT. SIDE), GUTTER OUTLET (LT. SIDE).