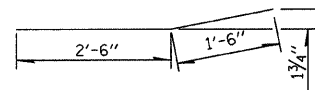


BAR LIST - PIER 4

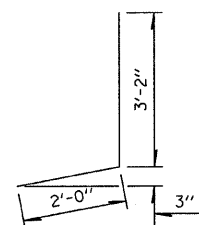
BAR	NUMBER OF BARS		TOTAL	SIZE	LENGTH	SHAPE
	STAGE I	STAGE II				
a1(E)	8	8	16	5	20'-6"	—
a2(E)	1	1	2	6	4'-0"	—
h(E)	3	3	6	6	20'-6"	—
d(E)	3	3	6	4	5'-2"	J
d1(E)	3	3	6	5	4'-0"	J
x(E)	20	20	40	5	2'-3"	—
CONCRETE REMOVAL				CU YD	4.5	
REINFORCEMENT BARS (EPOXY COATED)				POUND	680	
CONCRETE SUPERSTRUCTURE				CU YD	4.8	

REINFORCEMENT BARS DESIGNATED (E) SHALL BE EPOXY COATED

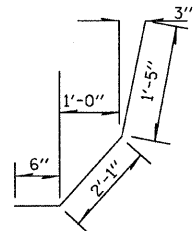
NOTE: EXISTING REINFORCEMENT BARS ARE TO BE CLEANED, STRAIGHTENED AND INCORPORATED INTO THE NEW CONSTRUCTION. ANY REINFORCEMENT BARS THAT ARE DAMAGED DURING CONCRETE REMOVAL OPERATIONS SHALL BE REPAIRED OR REPLACED USING AN APPROVED BAR SPLICER OR ANCHORAGE SYSTEM (COST INCLUDED IN CONCRETE REMOVAL).



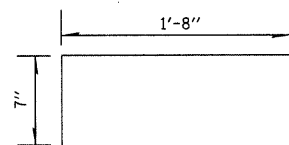
BAR a2 (E)



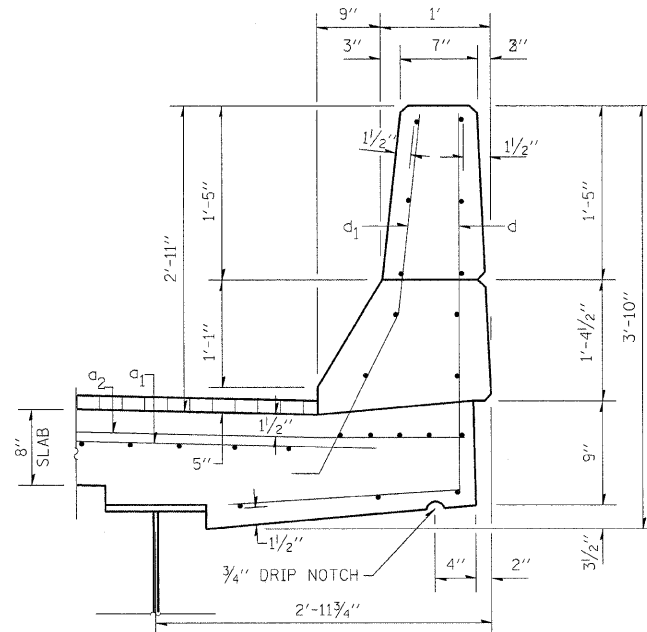
BAR d (E)



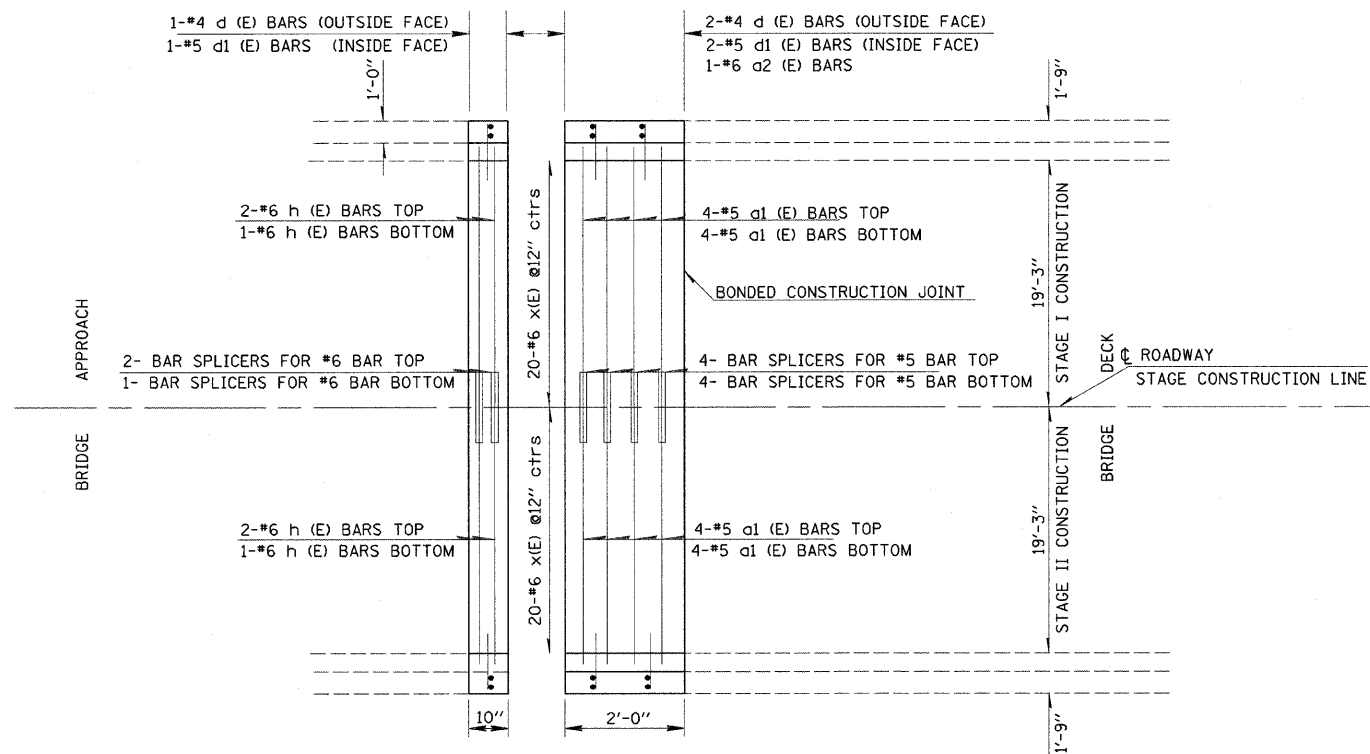
BAR d1 (E)



BAR x (E)

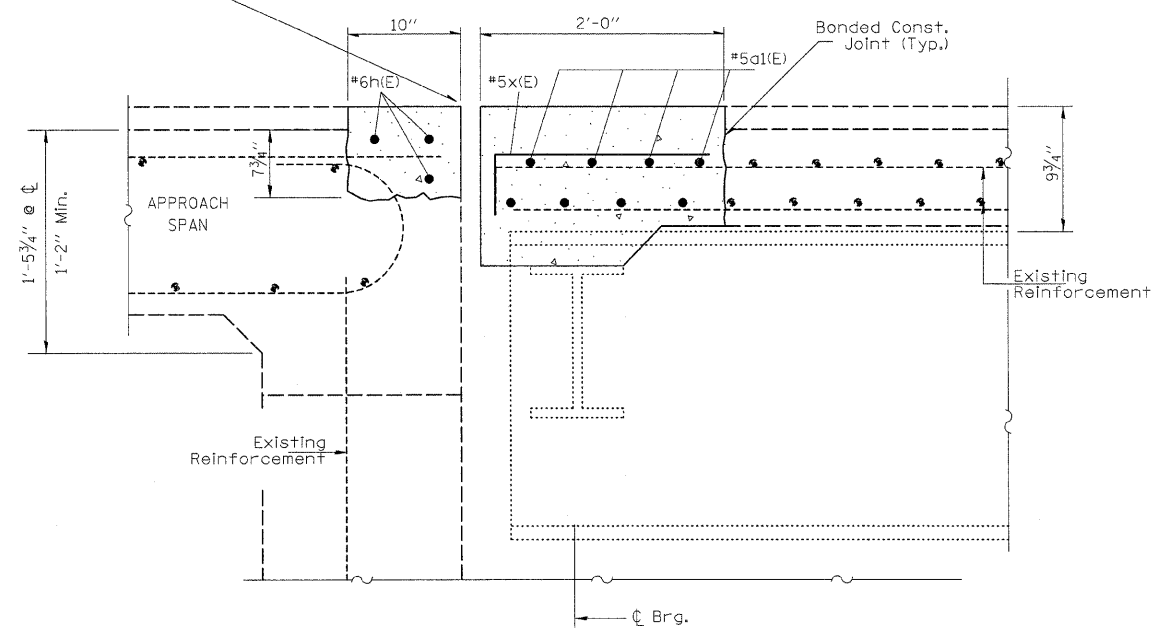


PARAPET DETAIL



REINFORCEMENT DETAIL  
PIER 4

PREFORMED JOINT STRIP SEAL FOR DETAIL OF EXPANSION JOINT SEE SHEET OF



PROPOSED EXPANSION JOINT AT PIER 4