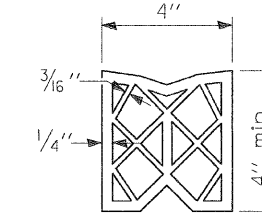
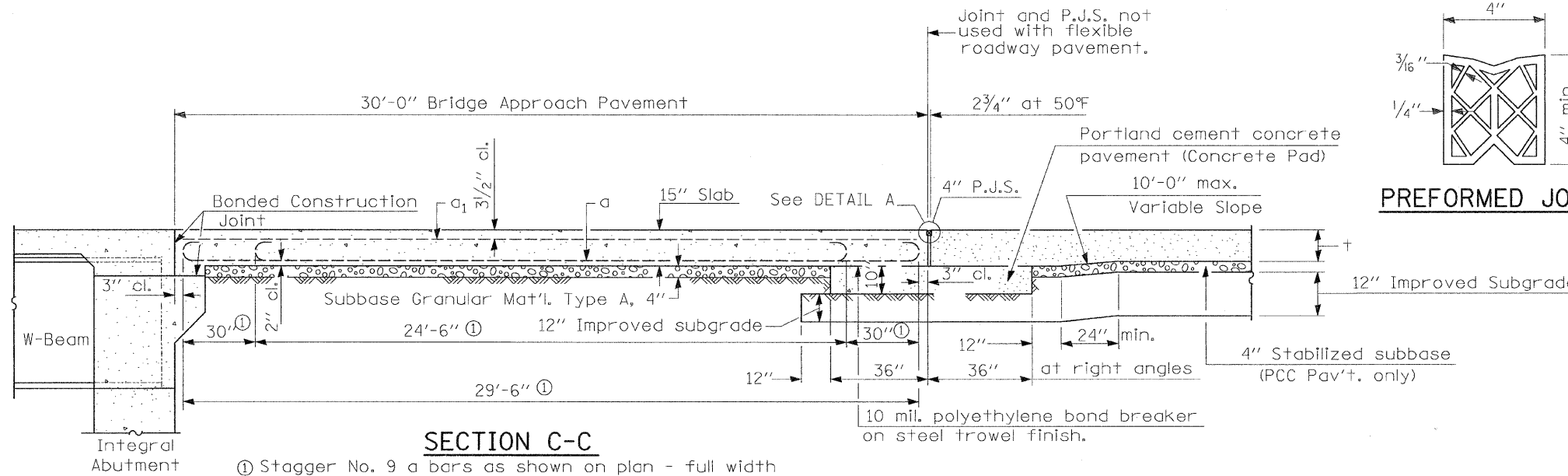
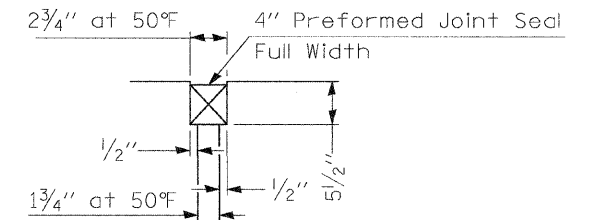


F.A.P. RTE.	SECTION	COUNTY	TOTAL SHEETS	SHEET NO.
310	60-116B, 16-1B)	MADISON	62	19
STA. 160+53.17 TO STA. 160+83.17				
FED. ROAD DIST. NO. ILLINOIS FED. AID PROJECT				
CONTRACT NO. 76567				

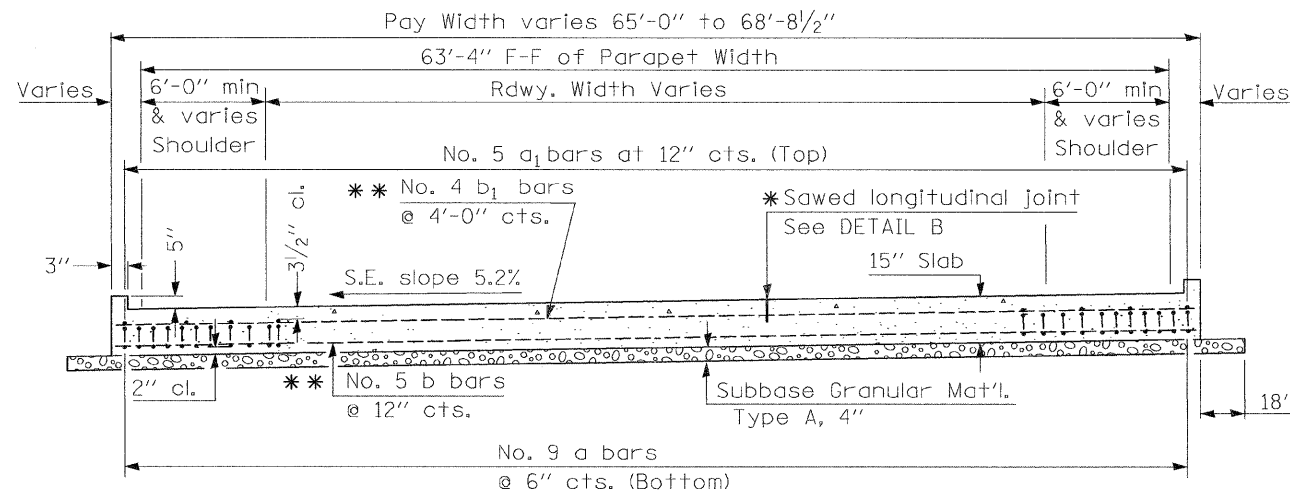


PREFORMED JOINT SEAL



DETAIL A

SECTION C-C
 ① Stagger No. 9 a bars as shown on plan - full width

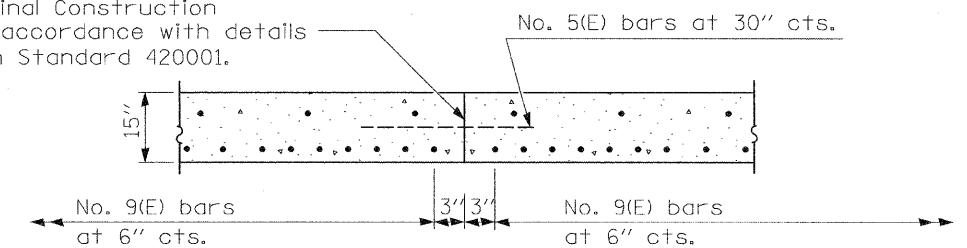


SECTION D-D

(See Plan for Dimensions not shown)
 All reinforcement bars shall be epoxy coated.

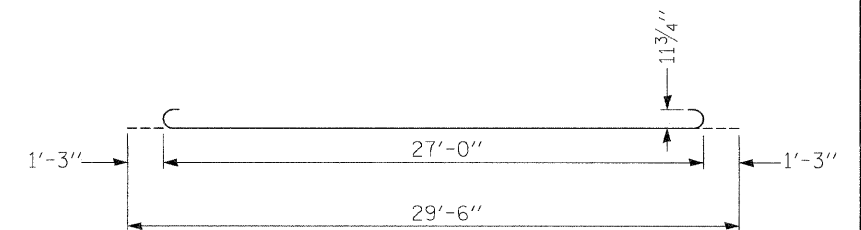
** Lap bar with 1'-1" min lap for No. 4 bars and 1'-4" min lap for No. 5 bars.

Longitudinal Construction Joint in accordance with details shown on Standard 420001.

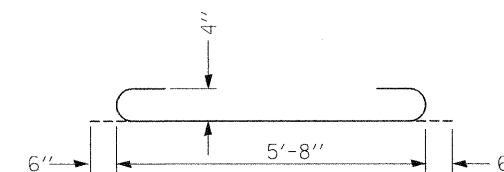


OPTIONAL LONGITUDINAL CONSTRUCTION JOINT

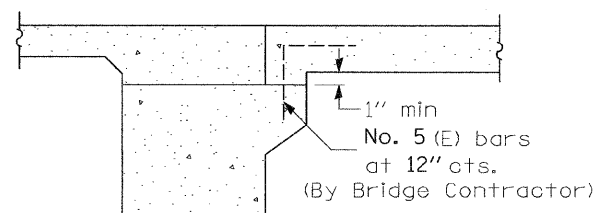
As approved by the Engineer, the Contractor may elect to reduce the widths of pour by use of the Optional Longitudinal Construction Joint shown. Joints shall be located at the edge of a traffic lane.



BAR a



BAR a2



SECTION E-E
 (Integral Abutments)

DESIGNED	J.L.G.
CHECKED	G.E.P.
DRAWN	B.A.D.
CHECKED	J.L.G.

DESIGN STRESSES

$f_y = 60,000$ p.s.i.
 $f'_c = 3,500$ p.s.i.
 $n = 8.5$

REVISIONS	
NAME	DATE

(Sheet 2 of 2)

ILLINOIS DEPARTMENT OF TRANSPORTATION

NORTH BRIDGE

APPROACH PAVEMENT

S.N. 060-0329

SCALE: NO SCALE
 DATE: 08-13-02

DRAWN BY: J.L.G.
 CHECKED BY: G.E.P.